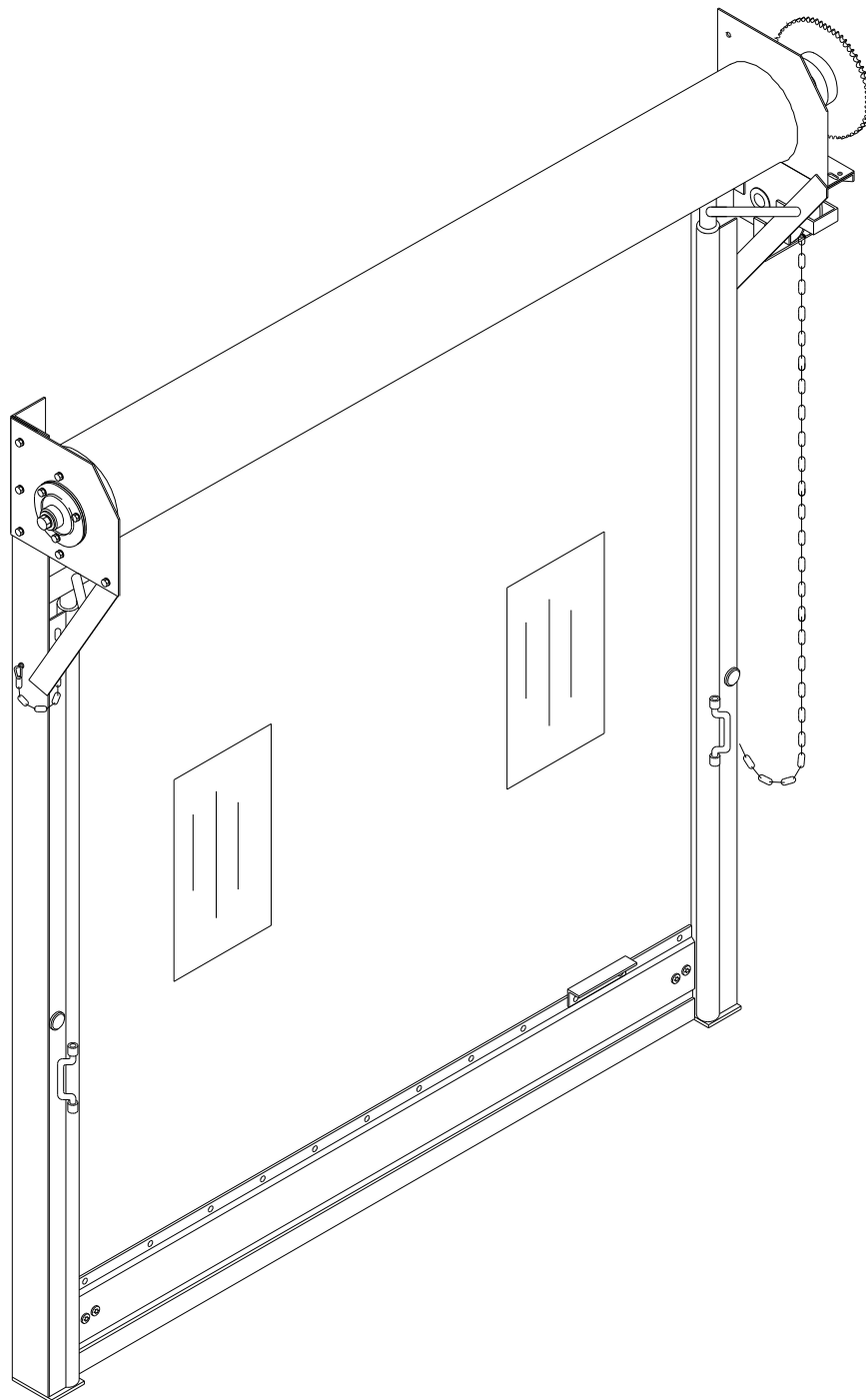


Dok-Dor®

MODEL 8010



This manual to remain with the unit:
Date Installed: _____



RITE·HITE®
ALWAYS LOOKING AHEAD



This Manual Covers Doors After 1-1-02, For Prior Doors Refer To 8010C.

PRODUCT INTRODUCTION

TABLE OF CONTENTS

SAFETY WARNINGS	3
SIDEFRAME INSTALLATION INSTRUCTIONS	4
HEADER INSTALLATION INSTRUCTIONS	5
SPRING WINDING INSTRUCTIONS	6
FRONT COVER INSTALLATION	7
MISC INSTRUCTIONS / OPERATING PROCEDURE	8
EXPLODED PARTS LIST	9
ARCHITECTURAL DRAWING	11
WARRANTY	

NOTICE TO USER

Our mission is to “Improve Industrial Safety, Security and Productivity Worldwide through Quality and Innovation.”

Thank you for purchasing the Dok-Dor® from **RITE-HITE DOORS, INC.** Dok-Dor is a mechanically operated roll-up door designed to be used in semi-secured areas with a moderate work flow. The rapid automatic retraction can be started, stopped or held at any open position. The retraction is aided by a built-in torsion style counterbalance spring. The Dok-Dor has been designed to withstand high wind conditions and the impact of fork truck loads without being damaged. Upon impact, the bottom rail assembly pops out of the side frames without being damaged. The bottom rail can be snapped back into the roller track in seconds, restoring the integrity of the door closures. An automated version is also available using a overhead door jack shaft operator.

This owner's manual **MUST** be stored near the door. **RITE-HITE DOORS, INC.** reserves the right to modify the electrical and architectural drawings in this manual as well as the actual parts used on this product are subject to manufacturing changes and may be different than shown in this manual. Due to unique circumstances with varying requirements, separate prints may be included with the unit.

This manual should be thoroughly read and understood before beginning the installation, operation or servicing of this door.

The information contained in this manual will allow you to operate and maintain the door in a manner which will insure maximum life and trouble free operation. The serial # label for your door is located on the side of the support post, **Figure 5.1**.

Your local **RITE-HITE DOORS, INC.** Representative provides the Planned Maintenance Program (P.M.P.) which can be fitted to your specific operation. If any procedures for the installation, operation or maintenance of the Dok-Dor have been left out of this manual or are not complete, contact **RITE-HITE DOORS, INC.** Technical Support at 1-563-589-2722.

ELECTRICAL REQUIREMENTS

It is the sole responsibility customer or representative to provide materials for the wiring of an optional operator.

INSTALLATION TOOLS REQUIRED

Fork and scissors lift	Spring Winding Bar
Hydro level	Plumb Bob and Chalkline
10' [3048] Step ladder	18" [457] Clamps (2)
Cordless drill	Straps For Lifting Header (optional)
25' [7620] Tape measure	1/2" [13] & 5/8" [16] masonry and/or drill bit for thru bolting
Wire strippers	1/2" [13] & 9/16" [14] open end and/or socket wrench
6' [1829] Carpenters level	11/16" x 12" [17 x 305] drill bit for thru bolting
Utility knife	Straight screwdriver (small 1/8" [3] spade)
Allen Wrench Set	Hardware for mounting door to the wall and anchors for fastening door to the floor are not included.
Hammer	
Phillips Screwdriver	
Hammer Drill and Cordless Drill (3/8" [10] or 1/2" [13])	

SAFETY WARNINGS

SAFETY IDENTIFICATION



DANGER

Danger indicates the presence of a hazard that *will cause severe personal injury, death.*



WARNING

Warning indicates the presence of a hazard that *can cause severe personal injury, death.*



CAUTION

Caution indicates the presence of a hazard that *will or can cause minor personal injury, death.*

NOTICE

Notice communicates installation, operation, or maintenance information that is safety related but not hazard related and may cause equipment or property damage.

NOTE:

A Note is used to inform you of important installation, operation or maintenance information.

GENERAL SAFETY NOTICES



DANGER

When working with electrical or electronic controls, make sure that the power source has been locked out and tagged according to OSHA regulations and approved local electrical codes.



DANGER

A qualified electrician should install the wiring in accordance with local and national electrical codes.
Use lockout and tagout procedures to avoid injury.



DANGER

To reduce risk of injury or death, an earth ground connection MUST BE made to the green/yellow control box ground terminal. If metal conduit is used as the ground connector, an N.E.C. approved ground bushing and green/yellow wire MUST BE properly attached to the conduit for connection to the ground terminal.



WARNING

Make sure to barricade the door opening on both sides to prevent unauthorized use until the door has been completely installed.

NOTICE

Damage or debris may fall into electrical components causing failure or severe equipment damage, when drilling holes in the box.

DO NOT turn control box upside down or go too deeply into the box.

NOTICE

In freezer and cooler applications where a conduit passes from a warm to cold temperature zone, the conduit must be plugged with epoxy. This will help prevent condensation from forming in the conduit. For more information, see Section 300-7a of the National Electric Code.

NOTICE

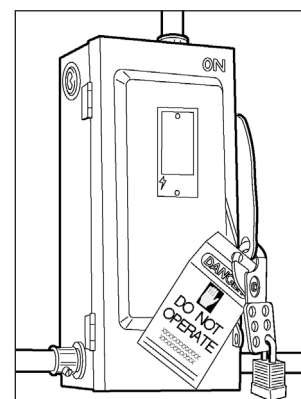
Do not drill holes on top of control box to run conduit, as dust particles and moisture may cause damage to electrical components. The safest location is at the bottom. Failure to do so will void warranty.

LOCKOUT/TAGOUT PROCEDURES

The Occupational Safety and Health Administration requires that, in addition to posting safety warnings and barricading the work area, the power supply has been locked in the OFF position or disconnected. It is mandatory that an approved lockout device is utilized. An example of a lockout device is illustrated. The proper lockout procedure requires that the person responsible for the repairs is the only person who has the ability to remove the lockout device.

In addition to the lockout device, it is also a requirement to tag the power control in a manner that will clearly note that repairs are under way and state who is responsible for the lockout condition. Tagout devices have to be constructed and printed so that exposure to weather conditions or wet and damp locations will not cause the tag to deteriorate or become unreadable.

RITE-HITE Corporation does not recommend any particular lockout device, but recommends the utilization of an OSHA approved device (refer to OSHA regulation 1910.147). RITE-HITE Corporation also recommends the review and implementation of an entire safety program for the Control of Hazardous Energy (Lockout/Tagout). These regulations are available through OSHA publication 3120.



INSTALLATION INSTRUCTIONS

The performance of any product is no better than the installation and application. The Dok-Dor requires only ordinary application and installation skills utilizing good workmanship and materials.

The Dok-Dor may be installed on door openings that have block, steel or wood jambs.

The main steps to installation are:

1. Dok-Dor materials and opening size inspection.
2. Installation of the side frames and covers.
3. Installation of weather seals.
4. Installation of the tube assembly.
5. Installation of the bottom rail assembly.
6. Adjustment of the counterbalance.
7. Operation of the door.

PREPARATION FOR INSTALLATION

1. Lay out all of the materials and inspect for proper quantities of components.
2. Inspect all components to make sure that there has not been any shipping damage. Notify your **RITE-HITE DOORS, INC.** representative immediately if damage has been noted.
3. Verify that the door opening size matches the door survey as compared to the door components. Determine the centerline of the door opening. Use this point to make sure that the entire door assembly is centered in the opening.

QTY DOOR PARTS

- | | |
|---|---|
| 1 | Roller Tube Curtain Assembly |
| 1 | RH Sideframe w/Cover |
| 1 | LH Sideframe w/Cover |
| 1 | Header Brush Seal w/Track |
| 1 | Bottom Rail w/Seal |
| 1 | Chain Hoist |
| 2 | Sprockets (only with operator by others option) |
| 1 | Center Shroud (optional) |
| 1 | Parts Bag |

DEFINITION	FUNCTION
Chainfall	If the chainfall is not working properly, check the following: a) Make sure the chain links are properly seated in the sprocket. b) Make sure the connector link is properly crimped.
Counter-Balance Spring	The door is equipped with a counter-balance spring that is located in the roller tube on the non-drive side. Check the following: a) If the door is difficult to close, the spring may have too much tension on it. Decrease pre-load on spring by turning the tensioner counter-clock wise, 1/4 of a turn at a time. b) If the door closes too quickly or is difficult to open, the spring may not have enough tension on it. Increase pre-load on spring by turning the tensioner clockwise, 1/4 of a turn at a time. c) Make sure to wind the spring down, winding it up will backwind the spring and distort it, voiding warranty. d) A spring hanging out of the roller tube has either broken or come loose. NOTE: Never exceed more than 1½ revolution of spring pre-load tension.
Curtain	If the curtain tracks off to one side, make sure the sideframes are plumb and level, if not shim as required. If the curtain comes out of the sideframes, check the following: a) Broken or missing edge retention clips, replace as needed. b) Make sure the sideframe cover knobs are fully tightened, if not the retention clips will pull through. If the curtain hangs into the opening increase tension on roller tube torsion spring. If the curtain goes too high decrease tension on roller tube torsion spring. If the curtain does not fully close, decrease tension on roller tube torsion spring.
Drive Chain	The roller tube is driven by a chain and sprocket setup, check to make sure the chain is tight and well oiled.
Operator System	See operator owner's manual for details.
Wind Pressure	If the curtain is billowing or blowing out, check the following: a) Make sure all wind retention clips are in place, if worn replace. b) Make sure the curtain gap is 3/4" or less. c) Weight can be added to the bottom rail, if the curtain is hanging up due to wind pressure. Consult RITE-HITE DOOR's Technical Support for details.

SIDEFRAME INSTALLATION INSTRUCTIONS

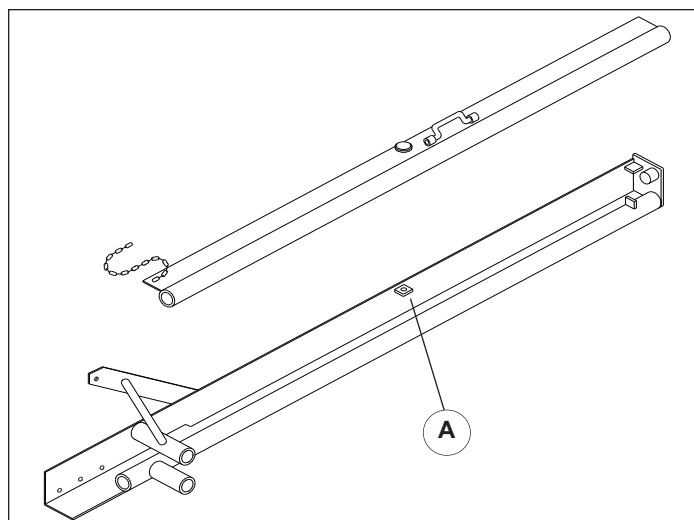


Figure 4.1

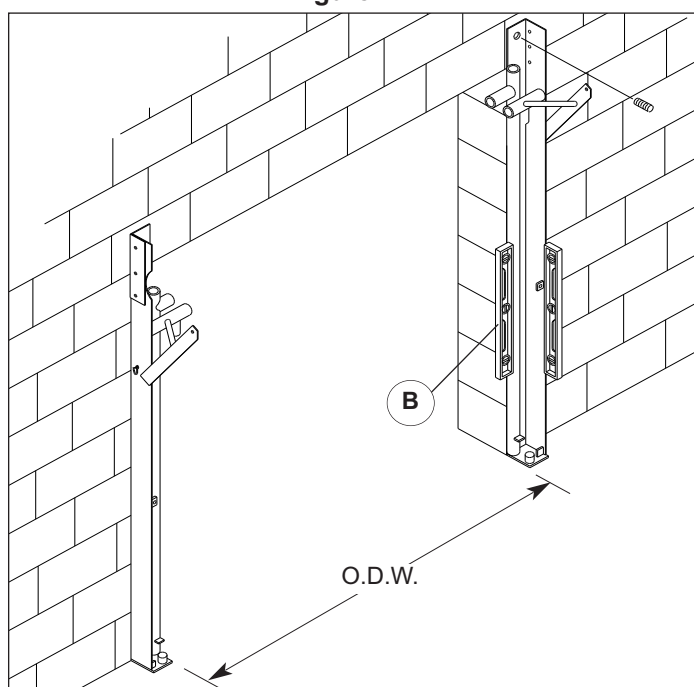


Figure 4.2

1. Loosen knob (A), slide cover upward and remove from sideframe, [Figure 4.1](#). Determine if the floor is level. If the floor is out of level, mount the highest side door side frame first. Mount the lower side door side frame and shim until it is level with the high side door frame. Make sure that the header is level and that the distance between the frames does not vary more than 1/16".
2. Using a 6' level (B) verify that the door frame is plumb, both front to back and side to side. Shim as required, [Figure 4.2](#).
3. Using the pre drilled holes in the side frames as a template, drill and insert the concrete anchors. If the wall construction is of either wood framing or metal make sure to use the proper fasteners. 1/4" [7] weld here (C). Maintain 3/4" [19] gap (D).
NOTE: Make sure that both frames are plumb.

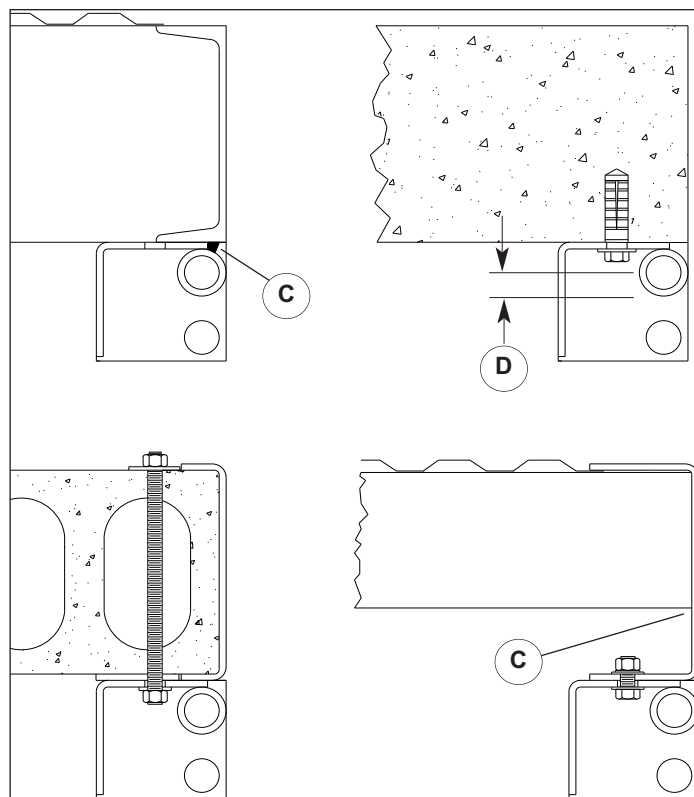


Figure 4.3

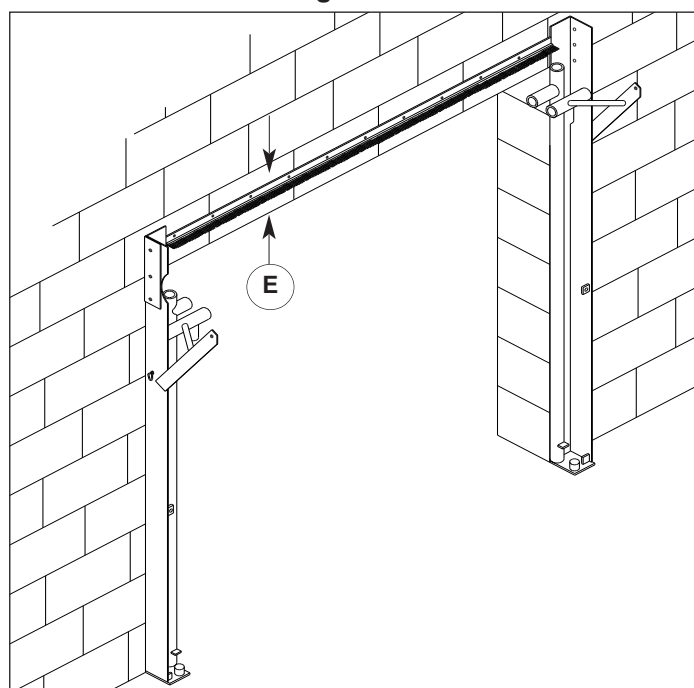


Figure 4.4

4. Recheck the frame to make sure that it is plumb before continuing with the installation. Repeat steps for second frame. Make sure that the proper distance is maintained between the side frames.
5. Install brush type weather seal (E) approximately 9" [229] above the door opening using self tapping screws or other suitable fasteners. Install fastener every 18" [457]. The seal can be located a minimum of 2" [51] or a maximum of 12" [305] above the opening.

HEADER INSTALLATION INSTRUCTIONS

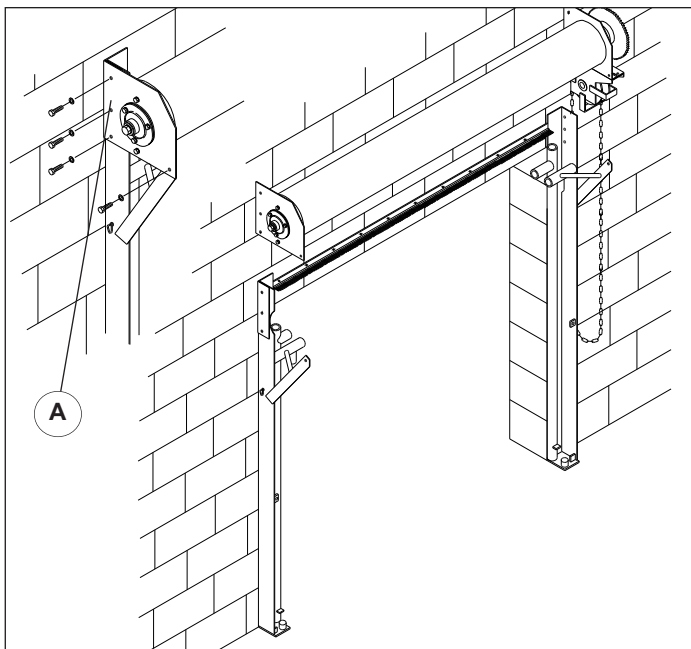


Figure 5.1

1. Using a forklift, lift and position the header tube assembly above the side frames and carefully lower into position on top of the sideframes.

NOTE:

Make sure that the header tube assembly is level. For proper operation, the tube assembly must be level.

Make sure that the door is in the full open position when preloading spring.

2. Align the three holes (A) in the bearing brackets with the holes in the side frames.
3. Install 3/8" x 3/4" bolts and lock washers. Install remaining bolts through the gusset into the bearing bracket. Securely tighten all bolts.
4. Insert adjustment tool (B) into tensioner. Scribe reference mark onto edge of torsion spring assembly. Holding tensioner in position, loosen and remove two 3/8" x 3/4" bolts. Pull tool towards you and watch the mark. Start winding until you meet the desired spring tension, per Spring Table. Two winding tools are required in the tensioning process. The first is used to rotate tensioner and the second to prevent the tensioner from snapping backwards when moving the first tool to the next winding hole. Re-install hardware removed.
5. Remove the tape that is securing the curtain and lower so that the bottom edge (C) is at a comfortable working height. Remove the pressure plate from the bottom rail assembly. Align holes through the bottom rail, curtain and pressure plate. Install bolts from outside and tighten securely. The longer carriage bolts are for the bottom step.

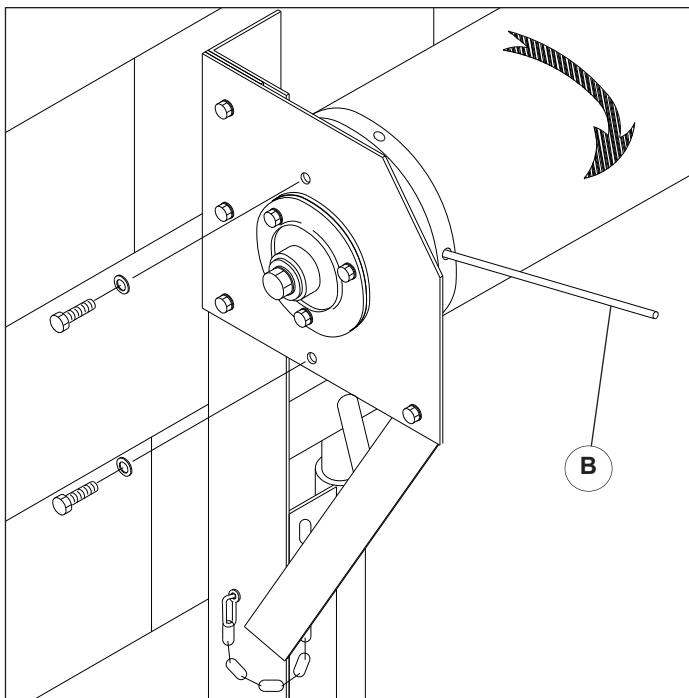


Figure 5.2

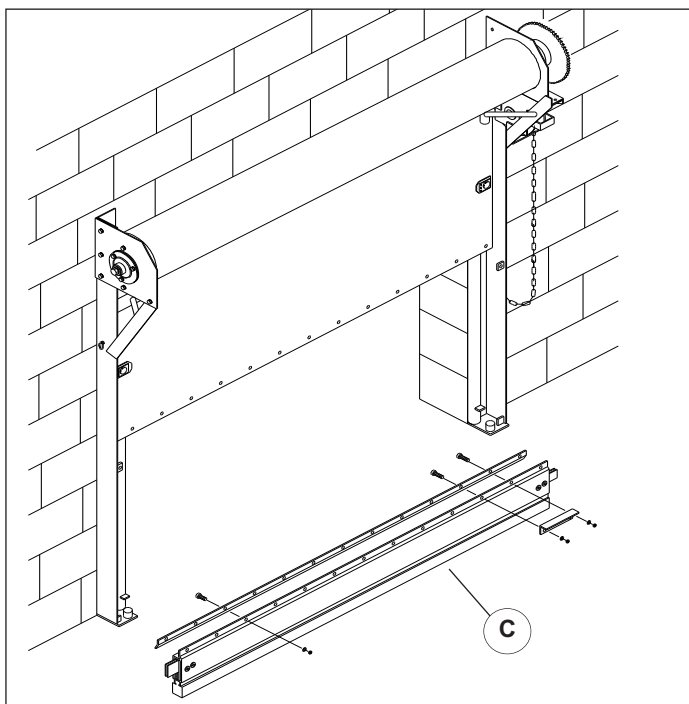


Figure 5.3



DANGER

The counterbalance spring is a torsion spring; use only the proper adjusting tool. DO NOT stand in front of the torsion assembly when making any adjustments. It is recommended that a full face shield be worn when doing this procedure.

Spring Pre- Load (Turns) Table

	6'	7'	8'	9'	10'
6'	1/2	1/2	3/4	3/4	1
7'	1/2	3/4	3/4	1	1
8'	3/4	3/4	1	1	1-1/4
9'	3/4	1	1	1-1/4	1-1/2
10'	1	1	1-1/4	1-1/2	1-1/2
Never Exceed 1-1/2 Turns Pre-load					

FRONT COVER INSTRUCTIONS

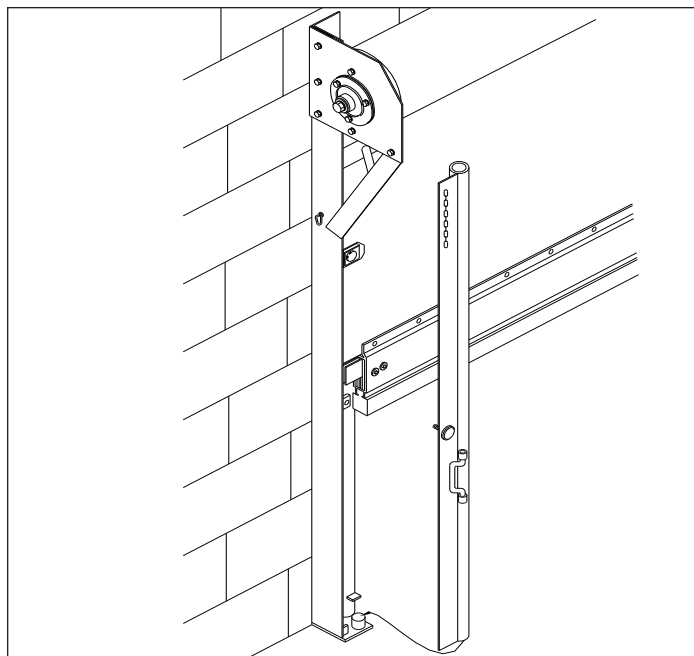


Figure 6.1

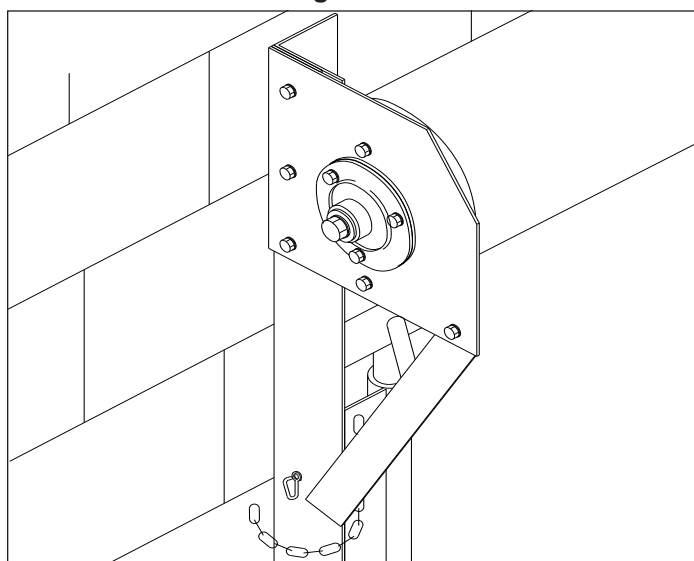


Figure 6.2

1. Install side frame covers by inserting the side frame cover on the pin located at the top of the side frame and lifting upwards. While lifting up, align the side frame cover with the lower pin and lower into position, [Figure 6.1](#).
2. Secure the cover into position with the screw knob and attach the cover safety chain to the connecting link located on the outside of the frame. Make sure to close the link securely to prevent the chain from coming loose, [Figure 6.2](#).
3. To lock the door with the optional dead bolt lock, fully close the door. Slide the dead bolts located in the bottom rail outward into the sideframes, [Figure 6.4](#).
4. If the bottom rail assembly has been popped out of the sideframes, remove both covers by loosening the knobs. Lift cover upward and out to remove it. Pull the curtain and bottom rail assembly back into position on the side frames. Reinstall the covers and secure with the knobs.

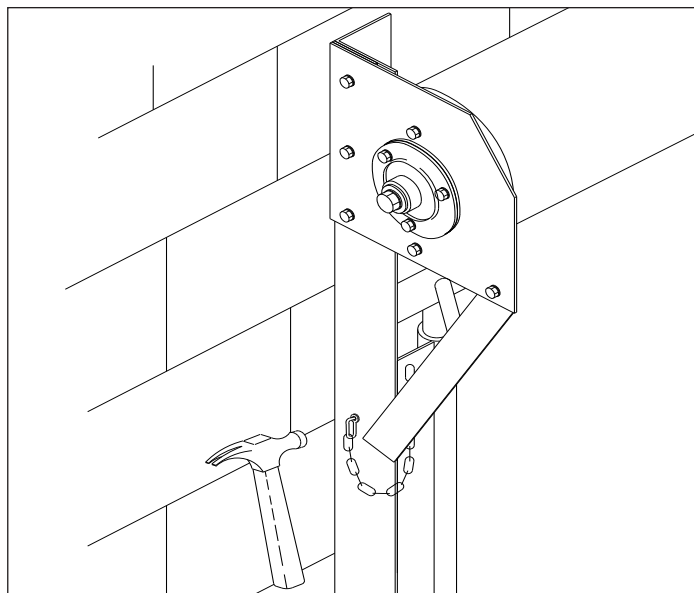


Figure 6.3

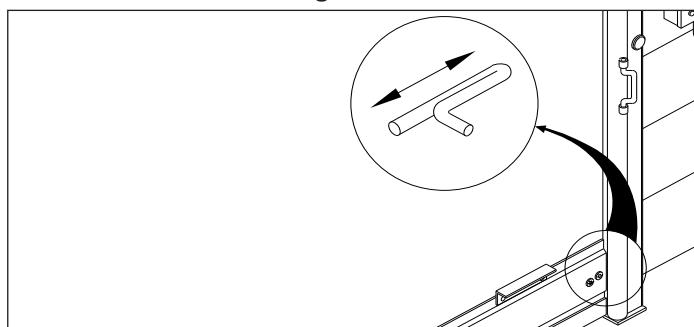


Figure 6.4

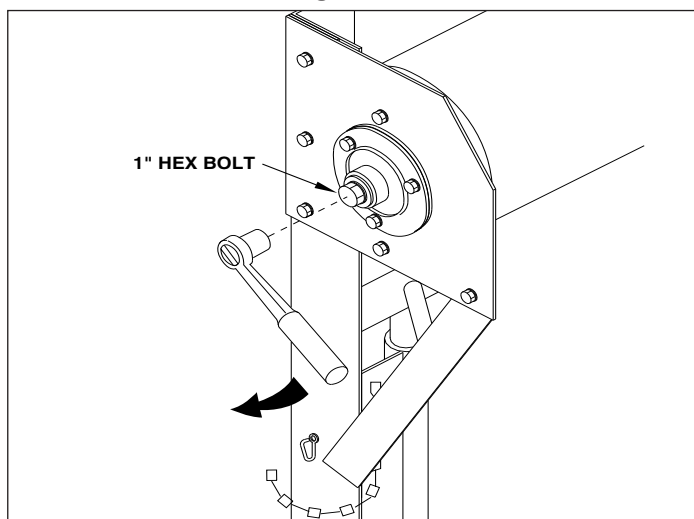


Figure 6.5

Make sure that the knobs are fully tightened to ensure that the edge retention clips are secure in the tracks to provide proper wind resistance, [Figure 6.4](#).

5. In the event of spring failure, locate the 1" [25] hex head bolt on the left side of the roller tube assembly. Using a socket drive or breaker bar, rotate the roller tube until the door has been fully opened. In the event of operator failure, pull and release the operator chain, the door will rise approximately 3' [914], [Figure 6.5](#).

MISC INSTRUCTIONS

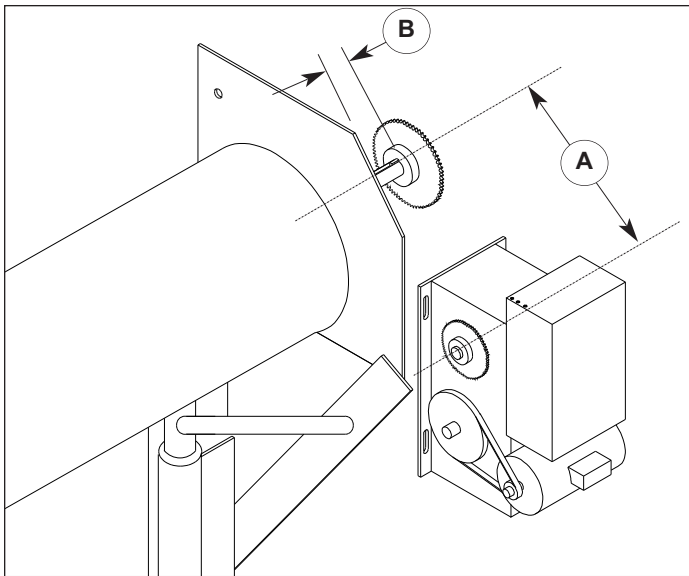


Figure 7.1

OPERATOR-READY CONFIGURATION (OPTIONAL)

1. Install operator a maximum of 18" [457] (A) from centerline of operator shaft to centerline of roller tube shaft. Position operator as close to the sideframe as possible (B) to prevent over hang of the shaft. See drawing on [Page 8](#) for details.
2. Install sprockets onto shafts and install chain.
3. Make sure clutch is adjusted, so it will slip if the door is wedged or bound.
4. Make sure the reversing photoeyes are functional if present.
5. Make sure the reversing edge reverses the door.

NOTE: A locking device should not be used in conjunction with a power operated door, damage may result.
If door runs in reverse, see operator owner's manual to change limit switch and open/close button wiring.

NOTE: It is the owner's responsibility to make sure that electrical installation complies with local electrical codes.

Selection, procurement, installation, and maintenance of the operator and associated safety hardware for the door are the responsibility of the owner or equipment installer. **RITE-HITE** Doors provides the following recommendation (or equivalent) for use on the 8010 Dok-Dor:

- Lift-Master Operator Model J5011-L (or equivalent for application voltage)
- CPS II option for reversing photoeye
- Brake Kit to hold curtain in the open position
- Tapeswitch Model TS16A 4-wire reversing edge / housing, and Tapeswitch mounting channel AF.

OPERATING PROCEDURE

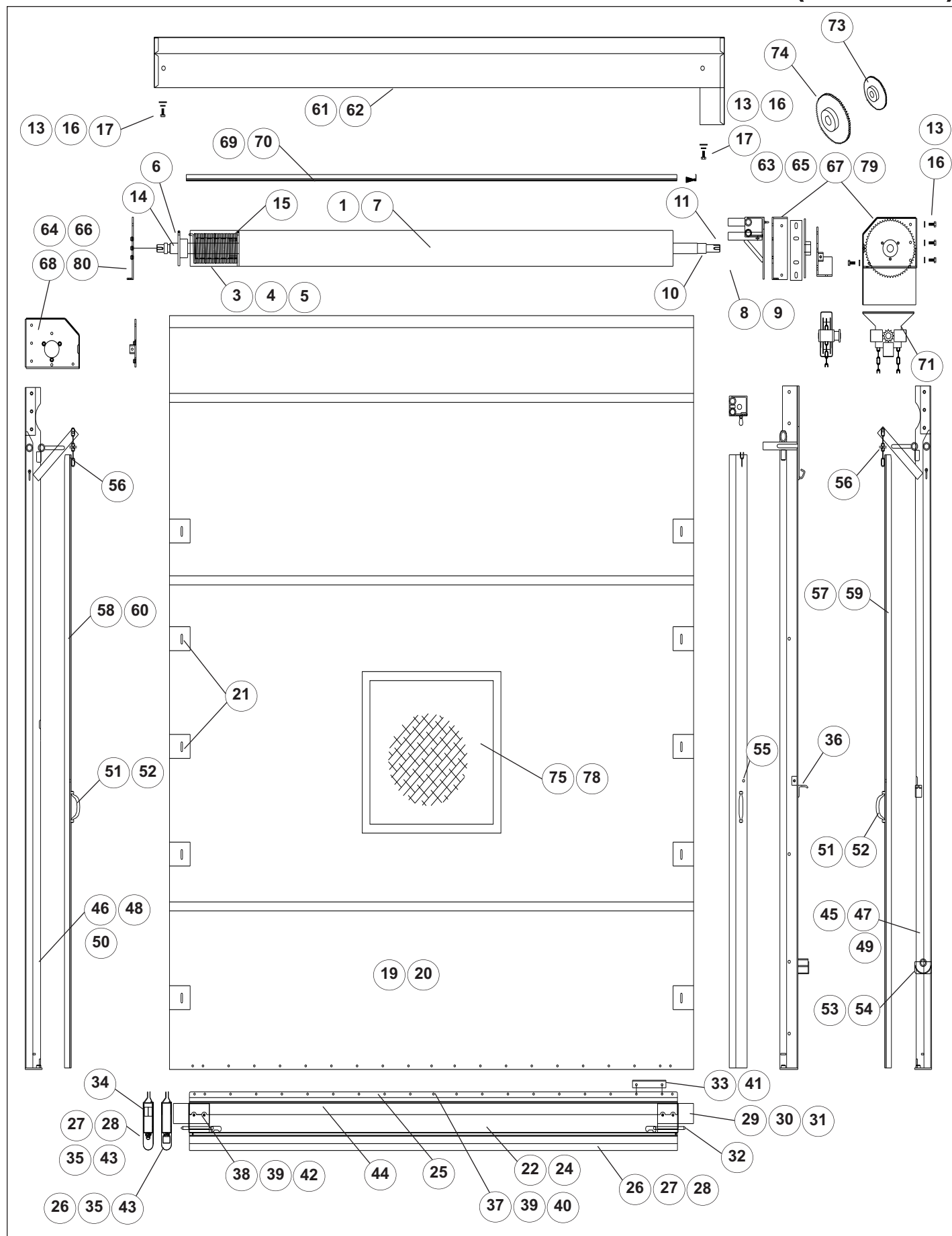
1. When opening, make sure door is unlocked if lock is present.
2. For manual doors, lift the door using the rope attached to the bottom rail.
3. After raising the door a couple of feet, the door should raise by itself to the full open position. To prevent slamming of the top, the rope should be held onto allowing a nice, smooth opening.
4. To close the door, simply pull down on the rope until it reaches the closed position.
5. If the door is operated via a motorized operator, simply press the open or close button. Depending on how the operator is setup, the buttons may need to be held in until it reaches the open or closed position.
6. In order to stop the door, depending on how the operator is setup, simply remove your finger from the open or close button, or press the stop button.
7. If the door is manually operated and equipped with a chain hoist, simply pull the chain up or down in the direction that is required.
8. If the door is power operated and equipped with a chain hoist, pull and lock the clutch release chain and then pull the chain hoist chain up or down in direction that is required.
9. The door may also be setup with an activation device such as a radio transmitter, induction loop, photoeye or motion sensors.

RITE-HITE DOORS, INC. PLANNED MAINTENANCE Model 8010 DOK-DOR™

CUSTOMER:

RHC#		SERIAL#		DATE:						Inspect and Perform the Following (See Manual)
Periodic Cycle Check: Planned Maintenance		Recommended P.M. Intervals								
		(Time Shown In Months)								
		1	4	8	12	18	24	30	36	
Chainfall			•		•		•		•	Check operation, pull chain, drive chain, and sprockets.
Curtain			•		•		•		•	Clean with isopropyl alcohol or like product.
Retention Clips			•		•		•		•	Verify all clips are present and seated properly.
Spring			•		•					Check tension and door balance.
Sideframes/Header/Shroud/Bottom Rail			•		•		•			Perform visual inspection. Tighten all hardware. Inspect for damage.
Operator					•					See operators owner's manual for details.

DOOR SERVICE PARTS (>2/17/04)



Exploded Parts List

DOOR SERVICE PARTS LIST (>2/17/04)

ITEM	QTY	DESCRIPTION	PART NUMBER
1	1	Roller Tube Assembly	6746....
2	-		
3	1	Roller Tube Spring, (Right side, LH Drive)	70700055
4	1	Roller Tube Spring, (Left side, RH Drive)	70700054
5	1	Roller Tube Spring Mandrel	55150053
6	1	Roller Tube Hub	52940015
7	1	Roller Tube Loop PSA 2"	74000020
8	4	Roller Tube Bearing Flange	45750001
9	2	Roller Tube Bearing	12500023
10	1	Roller Tube Drive Shaft Spacer	70450084
11	1	Roller Tube Key	53550012
12	2	Screw, HHMS, 3/8-16 x 1", GR5, znc	67880002
13	6	Screw, HHMS, 3/8-16 x 3/4", GR5, znc	67880008
14	1	Screw, Set, Sckt Cup, 3/8-16 x 3/4"	67880027
15	8	Screw, Set, Sckt Cup, 1/4-20 x 3/4"	67860055
16	8	Washer, Lock, Split, 3/8, znc	74130002
17	2	Washer, .38 x 1.44 x 11GA	74130005
19	1	Curtain Assembly, Fabric	2865....
20	1	Curtain Assembly, Screen	2865....
21	6-10	Clip, Edge Retention	16800010
22	1	Bottom Rail Assembly (Specify w/o Lock or w/Lock & R/L Drive)	1410....
23	a/r	Kit, Curtain Patch, Brown	53700651
24	1	Bottom Rail Extrusion (D.O.W. - 1")	44850159
25	1	Bottom Rail Pressure Plate (D.O.W. - 1")	44850158
26	1	Bottom Rail Seal Rubber Extrusion	68350069
27	1	Bottom Rail Sensing Edge Extrusion (D.O.W. - 1")	52930005
28	1	Bottom Rail Sensing Edge (5' thru 18')	72700014 - 0021
29	2	Bottom Rail Insert Outer	53100015
30	2	Bottom Rail Insert Inner	53100014
31	1	Bottom Rail Insert Plate	65000408
32	2	Bottom Rail Dead Bolt (Lock only)	67900037
33	1	Bottom Rail Step	55150054
34	1	Bottom Rail Weight	71530059
35	1	Bottom Rail Seal Fabric w/Lock or w/o Lock (D.O.W. Plus 1/4")	6882....
36	1	Hook, Chain, Sideframe, 8010	52900018
37	2	Nut, Hex, 5/16-18, znc	55620001
38	4	Nut, Torx head, 5/16-18 x 1/2"	55620006
39	2	Washer, Flat, 1/4 x 3/4 x 1/16", znc	74110001
40	a/r	Bolt, Carriage, 5/16-18 x 3/4", znc	67870022
41	2	Bolt, Carriage, 5/16-18 x 1", znc	67870032
42	4	Bolt, Carriage, 5/16-18 x 1 3/4", znc	67870024
43	2	Screw, PHLP, Dr/Tap, #8 x 3/4"	67850026
44	a/r	Loop Fastener, 2" PSA	74000019
45	1	Sideframe Drive Manual w/Lid (D.O.H. 7'-10')	6817....
46	1	Sideframe Non-Drive Manual w/Lid (D.O.H. 7'-10')	6817....
47	1	Sideframe Drive Operator Ready w/Lid (D.O.H. 7'-10')	6817....
48	1	Sideframe Non-Drive Operator Ready w/Lid (D.O.H. 7'-10')	6817....
49	1	Sideframe Drive Manual S.S. w/Lid (D.O.H. 7'-10')	6817....
50	1	Sideframe Non-Drive Manual S.S. w/Lid (D.O.H. 7'-10')	6817....
51	1	Sideframe Handle, Steel	51850021
52	1	Sideframe Handle, S.S.	51850022
53	1	Sideframe Chain Lower Guide, Steel	51350067
54	1	Sideframe Chain Lower Guide, S.S.	51350068
55	2/3	Sideframe Knob (3 on >10' d.o.h.)	53800003
56	1	Sideframe Front Cover, Chain, 9 Links	16600002
57	1	Sideframe Lid, Steel, Drive Side (7' thru 10' D.O.H) (specify RH or LH drive)	3862....
58	1	Sideframe Lid, Steel, Non-Drive Side (7' thru 10' D.O.H) (specify RH or LH drive)	3862....
59	1	Sideframe Lid, S.S. Drive Side (7' thru 10' D.O.H) (specify RH or LH drive)	3862....
60	1	Sideframe Lid, S.S. Non-Drive Side (7' thru 10' D.O.H) (specify RH or LH drive)	3862....
61	1	Shroud, Center, Steel (4' thru 10') (D.O.W. Plus 15")	6935....
62	1	Shroud, Center, S.S. (4' thru 10') (D.O.W. Plus 15")	6935....
63	1	Header Bracket, RH Drive	14500816
64	1	Header Bracket, RH Non-Drive	14500817
65	1	Header Bracket, LH Drive	14500820
66	1	Header Bracket, LH Non-Drive	14500821
67	1	Header Bracket, S.S. RH Drive	14500778
68	1	Header Bracket, S.S. RH Non-Drive	14500779
69	1	Header Seal, Brush (D.O.W. -1/2")	15000007
70	1	Header Seal, Track (D.O.W. -1/2")	73450061
71	1	Chainfall, 5:1	53700345
72	1	Crate (not shown)	2793....
73	1	Sprocket, #50, 12T (operator ready option only)	70800016
74	1	Sprocket, #50, 17T (operator ready option only)	70800017
75	a/r	Kit, Window, Removable, Vision, 12 x 24 (>4/97 thru < 11/08/05)	53700357
76	a/r	Kit, Window, Removable, Opaque, 12 x 24 (>4/97 thru < 11/08/05)	53700358
77	a/r	Kit, Window, Removable, Screen, 12 x 24 (>4/97 thru < 11/08/05)	53700359
78	a/r	Kit, Window, Non-Removable, Vision, 12 x 24 (>4/97 thru < 11/08/05)	53700360
79	1	Header Bracket, S.S. LH Drive	14500804
80	1	Header Bracket, S.S. LH Non-Drive	14500805

11

RITE-HITE DOOR PRODUCT WARRANTY



RITE-HITE Company, LLC and its affiliates (collectively "RITE-HITE") warrants that the Dok-Dor® sold to the Owner will be free of defects in design, materials and workmanship (ordinary wear and tear excepted) for the periods set forth below ("Limited Warranty").

One (1) Year on all mechanical and electrical parts.

One (1) Year labor, based on approved travel and labor repair times.

REMEDIES

Parts. RITE-HITE's obligations under this Limited Warranty is limited to repairing or replacing, at RITE-HITE's option, any part which is determined by RITE-HITE to be defective during the applicable warranty period. Such repair or replacement shall be RITE-HITE's sole obligation and the Owner's exclusive remedy under this Limited Warranty.

Labor. RITE-HITE will provide warranty service without charge for labor in the first year of the warranty period. Thereafter, a charge will apply to any repair or replacement under this Limited Warranty.

CLAIMS. Claims under this Limited Warranty must be made (i) within 30 (thirty) days after discovery and (ii) prior to expiration of the applicable warranty period. Claims shall be made in writing or by contacting the representative from whom the Product was purchased directly. Owner must allow RITE-HITE or its agent, a reasonable opportunity to inspect any Product claimed to be defective and shall, at RITE-HITE's option, either (x) grant RITE-HITE or its agent access to Owner's premises for the purpose of repairing or replacing the Product or (y) return of the Product to the RITE-HITE, f.o.b. RITE-HITE's factory.

NOT WARRANTED. RITE-HITE does not warrant against and is not responsible for wear items such as fuses, batteries, bulbs, vision and seals. No implied warranty shall be deemed to cover, damages that result directly or indirectly from: (i) the unauthorized modification or repair of the Product, (ii) damage due to misuse, neglect, accident, failure to provide necessary maintenance, or normal wear and tear of the Product, (iii) failure to follow RITE-HITE's instructions for installation, failure to operate the Product within the Product's rated capacities and/or specified design parameters, or failure to properly maintain the Product, (iv) use of the Product in a manner that is inconsistent with RITE-HITE's guidelines or local building codes, (v) movement, settling, distortion, or collapse of the ground, or of improvements to which the Products are affixed, (vi) fire, flood, earthquake, elements of nature or acts of God, riots, civil disorder, war, or any other cause beyond the reasonable control of RITE-HITE, (vii) improper handling, storage, abuse, or neglect of the Product by Owner or by any third party.

DISCLAIMERS. THIS LIMITED WARRANTY IS EXCLUSIVE AND IN LIEU OF ALL OTHER REPRESENTATIONS AND WARRANTIES, EXPRESS OR IMPLIED, AND RITE-HITE EXPRESSLY DISCLAIMS AND EXCLUDES ANY IMPLIED WARRANTIES OF MERCHANTABILITY OR FITNESS FOR PURPOSE. RITE-HITE SHALL NOT BE SUBJECT TO ANY OTHER OBLIGATIONS OR LIABILITIES, WHETHER ARISING OUT OF BREACH OF CONTRACT, WARRANTY, TORT (INCLUDING NEGLIGENCE AND STRICT LIABILITY) OR OTHER THEORIES OF LAW, WITH RESPECT TO THE PRODUCTS SOLD OR SERVICES RENDERED BY RITE-HITE, OR ANY UNDERTAKINGS, ACTS, OR OMISSIONS RELATING THERETO.

LIMITATION OF LIABILITY. IN NO EVENT SHALL RITE-HITE BE RESPONSIBLE FOR, OR LIABLE TO ANYONE FOR, SPECIAL, INDIRECT, COLLATERAL, PUNITIVE, INCIDENTAL, OR CONSEQUENTIAL DAMAGES, EVEN IF RITE-HITE HAS BEEN ADVISED OF THE POSSIBILITY OF SUCH DAMAGES. Such excluded damages include, but are not limited to, personal injury, damage to property, loss of goodwill, loss of profits, loss of use, cost of cover with any substitute product, interruption of business, or other similar indirect financial loss. Rite-Hite 2.1.14

RITE-HITE DOORS, INC. is covered by one or more of the following U.S. patents, including patents applied for, pending, or issued:

5,579,820, 5,638,883, 5,794,678, 5,887,385, 5,915,448, 5,944,086, 6,089,305, 6,145,571, 6,148,897, 6,192,960, 6,212,826, 6,321,822, 6,325,195, 6,330,763, 6,360,487, 6,481,487, 6,560,927, 6,598,648, 6,612,357, 6,615,898, 6,688,374, 6,698,490, 6,837,296, 6,901,703, 6,942,000, 6,964,289, 7,034,682, 7,045,764, 7,111,661, 7,114,753, 7,151,450, 7,578,097, 7,699,089, 7,748,431, 7,757,437, 8,037,921, 8,167,020, 8,113,265.

RITE-HITE®, RITE-HITE® DOORS, FASTRAX®, FASTRAX® FR, FASTRAX® FRDL, FASTRAX® CL, LITESPEED™, SPLITSECOND™, TRAKLINE™, BUG-SHIELD™, ISO-TEK®, BARRIER® GLIDER, DOK-DOR™ are trademarks of RITE-HITE®.

RITE-HITE
8900 N. Arbon Drive
P.O. Box 245020
Milwaukee, Wisconsin 53224-9520
Sales: 414-355-2600
Toll Free: 800-456-0600
Aftermarket: 414-362-3714
Service: 563-589-2722
Service Fax: 563-589-2737
Representatives in All Major Cities
www.ritehite.com