

|                             |    |
|-----------------------------|----|
| <b>NOTICE TO USER</b>       | 2  |
| <b>SAFETY</b>               | 3  |
| <b>INSTALLATION</b>         |    |
| Overview                    | 4  |
| Preparation                 | 5  |
| Mounting Methods            | 5  |
| Side Frames                 | 6  |
| Canopy Header               | 8  |
| Side Curtains               | 12 |
| Weighted Seal, Wear Panel   | 13 |
| Bumpers                     | 17 |
| Collapsible Style Draft Pad | 17 |
| <b>MAINTENANCE</b>          | 19 |
| <b>PARTS</b>                |    |
| Exploded View – 620G        | 20 |
| Exploded View – 620NH       | 22 |
| <b>WARRANTY</b>             | 24 |

Document Name: **620G0001**

Illustration Name: **620G0002**

Manual Part #: **39500129**

Model #: **620G, 620NH**

Publication: **AMEN00141 2019-11-22**

## NOTICE TO USER

Thank you for purchasing a Rite-Hite product.

The Eclipse® 620G and 620NH Dock Shelters provide a durable, effective environmental seal between the trailer and building.

Instructions apply to both 620G and 620NH unless otherwise noted.

The English version of this manual shall prevail over any error in, or conflicting interpretation of, any translations.

Rite-Hite reserves the right to substitute and/or modify parts and drawings. If separate prints are included with the unit, they supersede the manual.

For best results, have this product serviced by an authorized Rite-Hite representative.

A Planned Maintenance Program (P.M.P.), customized to your specific operation is available and recommended.

For a P.M.P., contact your local Rite-Hite representative or Rite-Hite technical support at (U.S.) 1-888-456-3625, (S.A.) +55 21 99616 4421.

---

The Rite-Hite products in this manual are covered by one or more of the following U.S. patents: 6014844, 6044597, 6205721, 6233885, 7146673, 7185463, 7246467, 7287353, 7584517, 7695048, 7757442, 7877831, 7882663, 8042307, 8141305, 8156995, 8307588, 8327587, 8353136, 8458960, 8495838, 8540007, 8752335, 8800086, 8839842, 8887447, 8915029, 8943630, 8991467, 9003724, 9003725, 9010039, 9079713, 9162832, 9170044, 9187271, 9193543, 9534372, 9534373, 9551181, 9592972, 9624049, 9751703, 9797127, 9797128 and may be covered by additional pending U.S. and foreign patent applications.

---

Manufactured by Rite-Hite Environmental Enclosure Corporation.

## SAFETY

### Safety Identifications

#### **DANGER**

Indicates a hazardous situation which, if not avoided, will result in death or serious injury.

#### **WARNING**

Indicates a hazardous situation which, if not avoided, *could result in death or serious injury*.

#### **CAUTION**

Indicates a hazardous situation which, if not avoided, *could result in minor or moderate injury*.

#### **NOTICE**

Indicates a situation which can cause damage to the equipment, personal property and/or the environment, or cause the equipment to operate improperly.

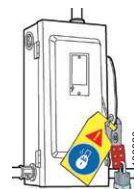
**NOTE:** A note is used to inform you of important installation, operation, or maintenance information.

### Lockout Procedure

Barricade work area and post safety warnings.

Power supply and control must:

- Be disconnected or locked in OFF position using a lockout device approved by local codes.
  - Have signage that;
    - Clearly states repairs are being made.
    - Identifies person responsible for lockout condition.
- NOTE:** Only this person should be able to remove warnings and lockout device.
- Withstands environmental conditions (weather, wet, and damp, etc.) and remains readable.



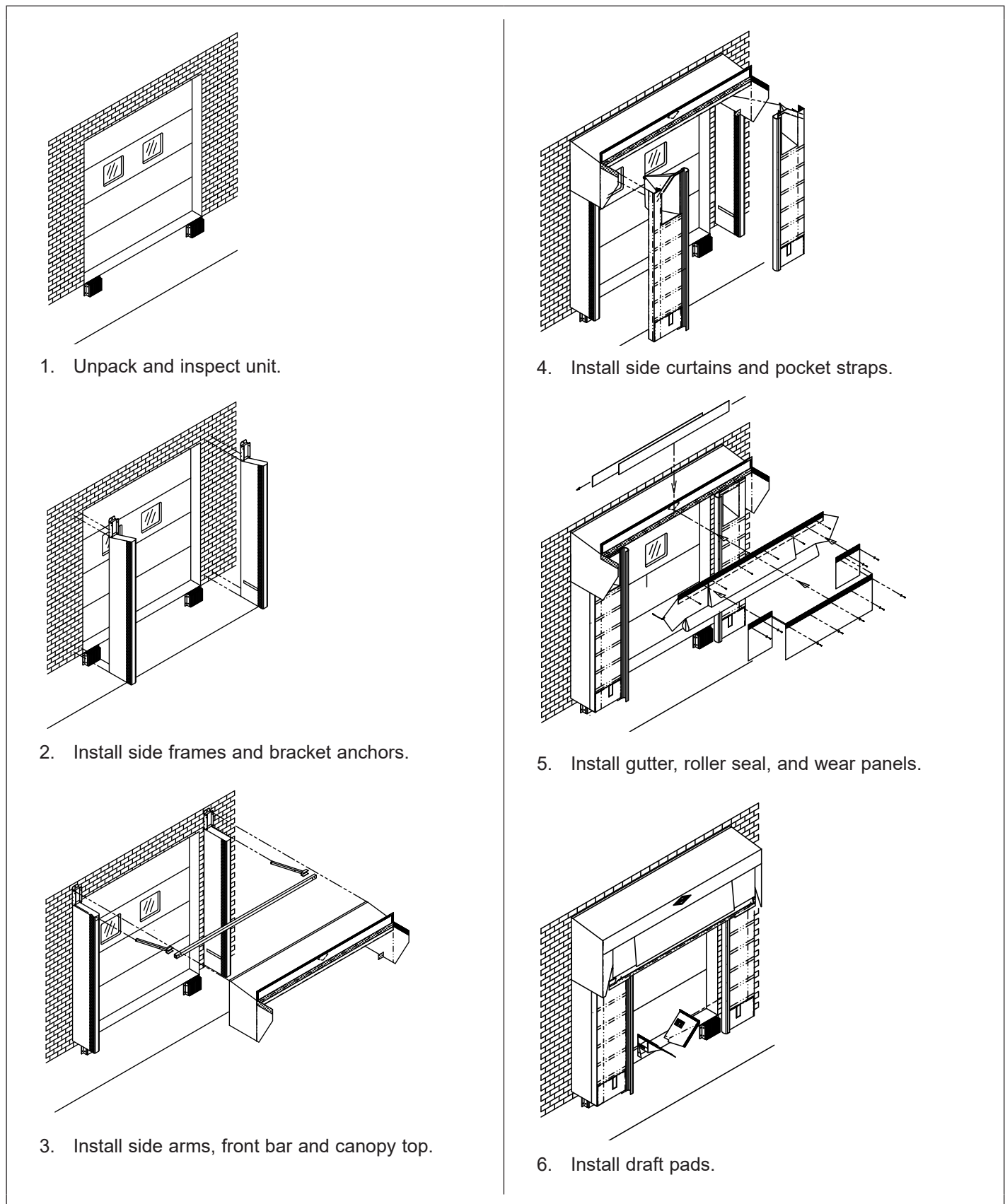
### General

#### **WARNING**

To prevent unauthorized use, barricade the work area at dock and ground level while service work is being performed.

## INSTALLATION

### Overview



**Figure 1**

Instructions assume that the installer is outside the building facing the loading dock.

## INSTALLATION

### Preparation

Verify all components were received. Notify your Rite-Hite Representative if parts are missing or damaged.

### Mounting Methods

**NOTE:** Any additional fasteners, backer plates and materials for additional structure are supplied by others.

#### Concrete Block or Brick Wall

Through bolt fastening is required.

- Bore a hole through the building wall.
- Use a 3/8in [9mm] diameter threaded rod with a washer, nut, and jam nut on each end.
- Install a backer plate inside the building wall when the wall will not support the bolt.

#### Concrete Tilt-Up Walls (Precast)

Use 3/8in [9mm] lag bolts with expansion shields, 3/8in [9mm] 1 piece anchor bolts with expansion collar, or equivalent fastener.

If building wall is too thin to effectively hold the lag bolt or anchor bolt, through bolt method of attachment is required.

**NOTE:** To determine anchor length, use anchor manufacturer's recommendation for minimum anchor embedment.

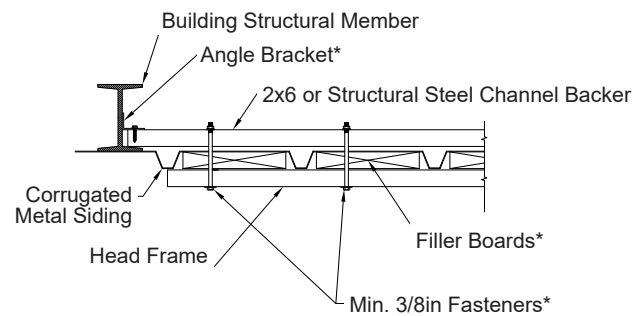
#### Metal Sided Building

Through bolt fastening is required.

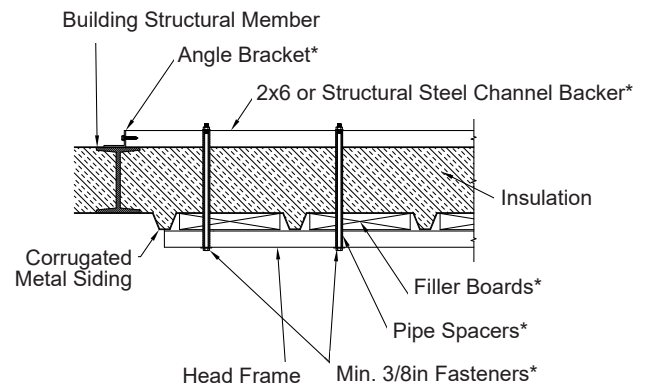
- Use a 3/8in [9mm] diameter bolt with a washer and lock nut to fasten the unit to the structural member of the building or to the backer plates. If necessary, use a 3/8in [9mm] diameter threaded rod with a washer and lock nut on each end.
- Install a backer plate that is fastened directly to structural member when it is not possible to fasten directly to structural building members.

**NOTE:** See "Figure 2" for recommendations.

#### Uninsulated Wall Building



#### Insulated Wall Building



\*Supplied by others.

**Figure 2**

## INSTALLATION

### Side Frames

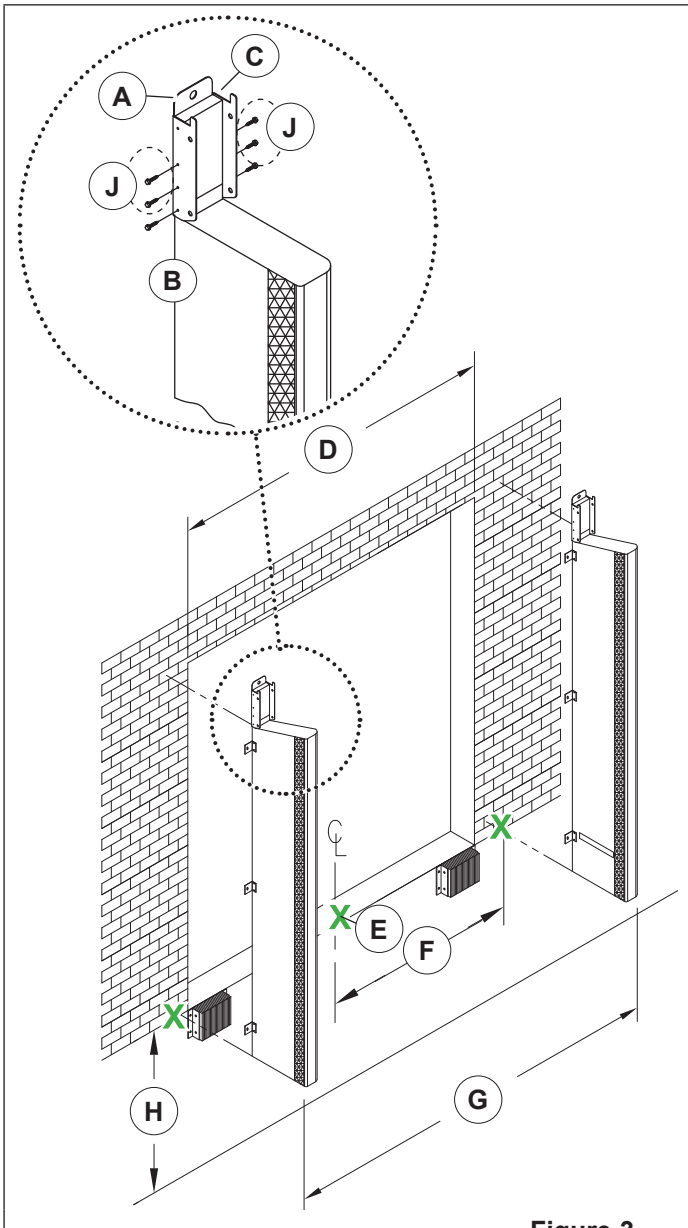


Figure 3

1. Before mounting side frames, install canopy mounting brackets (A) to top of side frames (B).

- Position bracket so notches at top of bracket are flush with the top of the wood, side pad backer (C).
- Secure in place with 6 hex head wood screws (J) provided.

**NOTE:** Brackets (A) are not part of the overall unit width. Unit width when mounting side frames should be measured from outside edge of side frames. Brackets add  $\approx 1/4$ in [6mm] to unit's overall footprint. Allowance is accounted for in the header installation.

2. Measure and mark:

- Measure dock door opening width (D). Divide in half and mark the centerline of the opening at dock level (E).
- Measure unit width and divide in half. Compare to PAF (Product Application Form) specs.
- Measure from door centerline (E) to half of the head frame dimension (F) and mark the outside wall (at the bottom of the door opening or at dock level). This mark is for the outside edge of the side frame.
- Measure (at dock level) from this mark (outside edge of the side frame) across the door opening to the unit width (G). Mark this measurement for the outside edge of the second side frame.
- Consult PAF or sales representative for mounting height to the bottom of the side pads (H). Measure up from grade on the dock face and mark.

**NOTE:** Typically, the bottom of the side pad is mounted at dock height. Some applications may require mounting them at a different location.

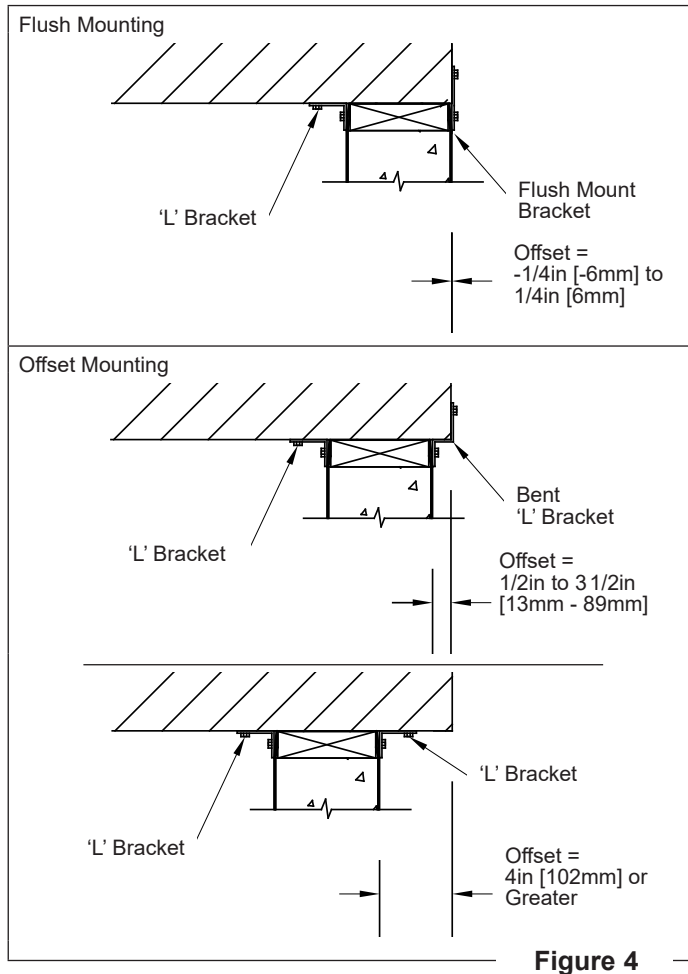
**Example:** When dock bumpers are mounted above dock height or above the pit floor (on vertical leveler applications) it may be required to mount the bottom of the side pads/side frames at a height even with the top of the bumpers.

3. Dry fit and shim:

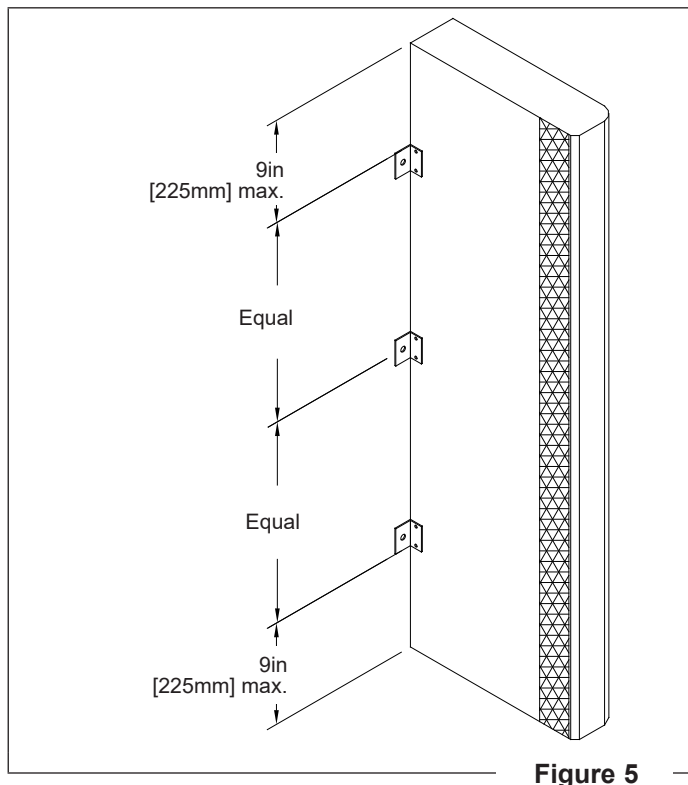
- Using carpenter's level, plumb up the wall the height of the side frame and mark the outside edges of the side frames on the wall at top.
- Measure full width, etc. Using a plumb bob or carpenter's level make sure that the outside wall is plumb from the highest point on the side frame location to dock level.
- Shim side frames as required.

## INSTALLATION

### Side Frames *Continued*



**Figure 4**



**Figure 5**

#### 4. Install brackets:

##### **NOTE:**

- Side frames are supplied with brackets that match the application (**Figure 4**).
  - If blockouts were supplied with the unit, reference the blockout installation manual (Document 1321-0008) and this manual to ensure proper installation of the blockouts and the side frames.
  - Position the side frames on their marks.
  - Mark the side frame for bracket installation (3 on each side of each side pad) (**Figure 5**).
- Example:** Line up the mounting hole on the bracket with a mortar joint on the wall and attach the mounting bracket to the side frame backer board.
- Attach the brackets to the side frame backer. Use (supplied) 1/4in x 1 1/4in wood screws for wood backers.

### NOTICE

4in [102mm] width side frames require protective bumpers to be installed below the side pads. Reference "**Bumpers**" on page 17.

If the 4in [102mm] side frame (including blockout) has an overall projection greater than 40in [1016mm], the bottom, front of the blockout must be secured to either the bumpers, the building foundation, or any other solid rigid structure underneath the blockout. This is required to stabilize the side frames.

#### 5. Attach the side frames to the building wall, ensuring they are aligned with the marks made in step 1.

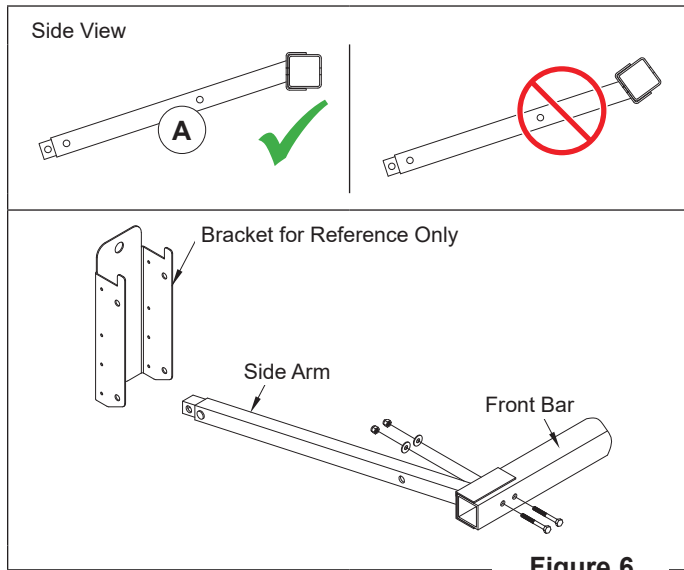
### NOTICE

It is critical to mount the side frames plumb and per the building style (**Mounting Methods, page 5**).

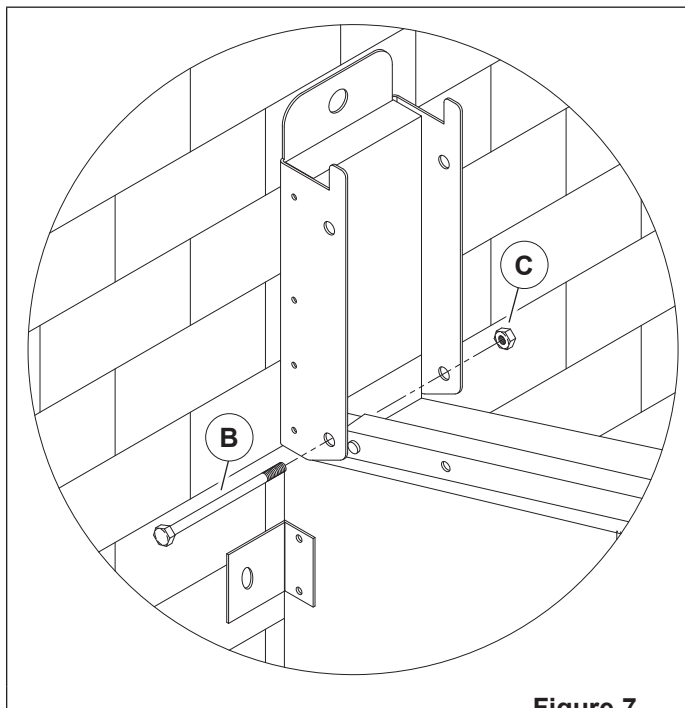
## INSTALLATION

### Canopy Header

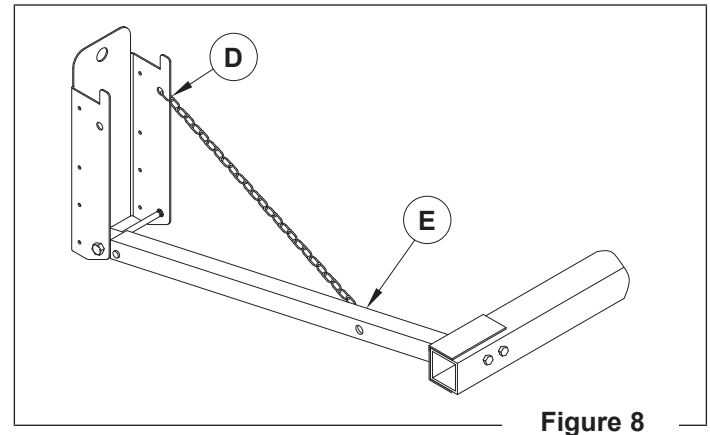
**NOTE:** Installation procedure is the same for Standard Pitch and Integral Hood, except that the canopy mounting bracket is longer for the Integral Hood.



1. Attach the side arms to the front bar. Before inserting the attachment bolts, confirm orientation of the side arms is correct (A).



2. Lift the side arm/front bar assembly together and position across the installed side frames and mounting brackets. Position it on top so the side arms on the top frame are facing the wall and land between the mounting brackets on side frames (**Figure 7**).
3. Connect bracket and side arm with bolt (B) on each side of unit. Secure with (supplied) nylock nut (C).

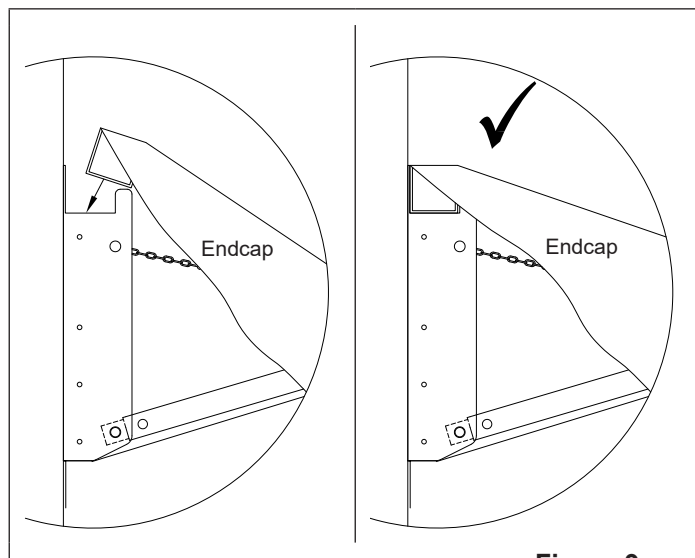


4. Install the installation chains on both sides of the canopy frame. The chains hold the front bar up so the canopy cover can be attached.
  - First attach quick link side (D) of the chains to the inside legs of the canopy mounting brackets.
  - Next, lift up canopy front bar and attach the "S" hook side (E) of the chains to holes on the inside face of the side arms.



## INSTALLATION

### Canopy Header *Continued*



**Figure 9**

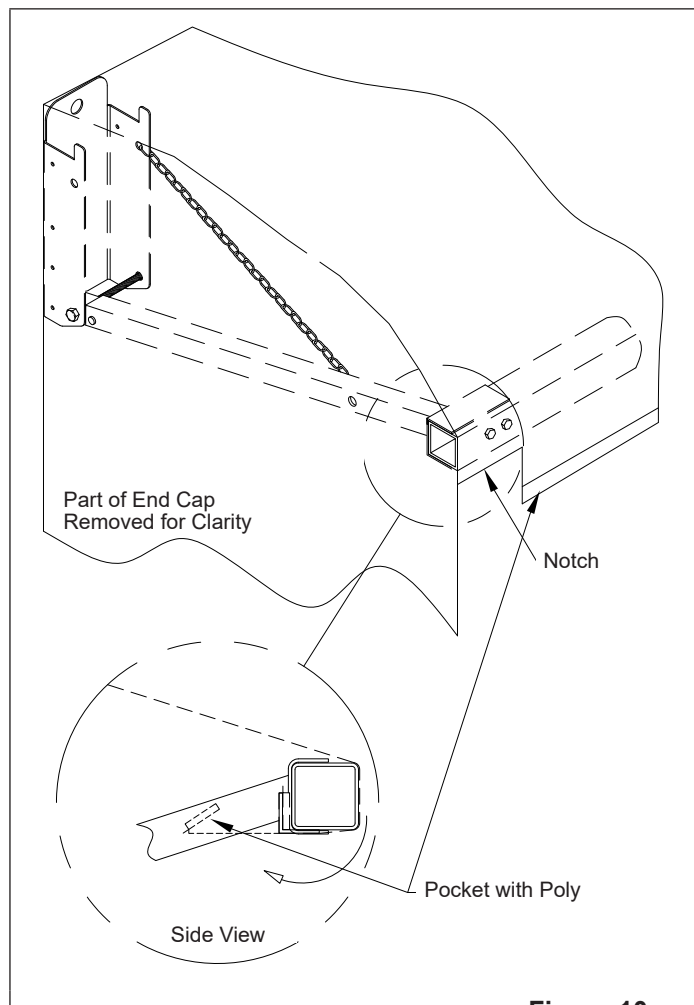
5. Unroll and then lift and lay the canopy cover (top bar attached) on top of the side arms at the wall.

Lift up and slowly position the top bar behind the tabs on the canopy mounting brackets.

Make sure the top bar is oriented correctly.

- All 4 faces of top bar should be covered with fabric.
- Fabric should be wrapped from front face of top bar, under the bottom, up the back (against the wall), across the top towards the front of the unit, then extend from the top, front corner of the top bar down to the front bar.
- The canopy cover and end caps (at the corners where the canopy top and end cap meet) are laying correctly over the edge of the mounting bracket.

6. Drape canopy cover over the front bar (the 2 1/2in [65mm] square tubing). Make sure the canopy cover at the front corners lays correctly over the corners of the front bar.



**Figure 10**

7. Wrap the canopy cover front bar pocket (with poly strip inside), down and around the bottom of the front bar.
- The pocket/poly strip will wrap back up the back inside face of the front bar and tuck behind the steel angle welded at back.
  - The pocket is notched to fit around the side arm bracket and the edge of the pocket should line up with the edge of the steel angle on both ends about 1/2in [13mm] away from the side arm bracket. Make sure that the pocket/poly strip combination gets seated all the way down in the space between angle and front bar.

## INSTALLATION

### Canopy Header *Continued*

#### **WARNING**

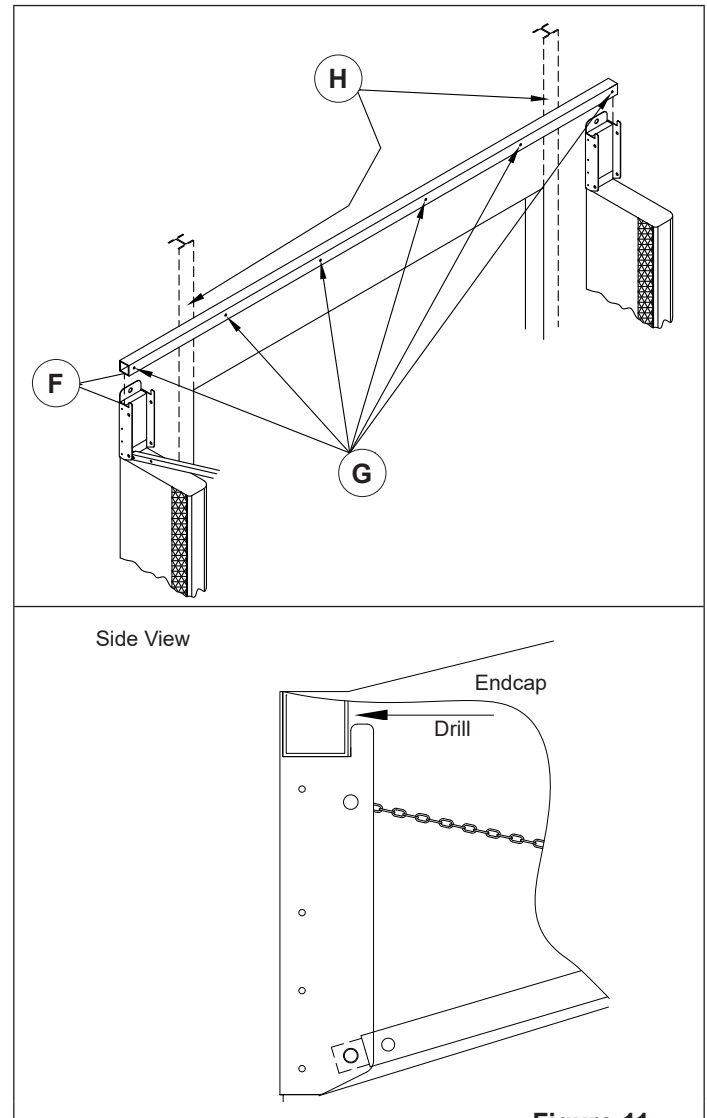
The canopy header is a self supporting unit.

Installing less than 6 anchors and/or insufficient anchor installation methods is dangerous and can cause unit failure.

Metal sided buildings require special and increased mounting support considerations.

1 anchor location is required into solid structure (H) (Figure 11) on each side of the door opening. All other mounting locations require a backer plate and pipe spacers (as needed) on the inside of the wall so the mounting bar and the wall will flex together.

- If structure is not aligned with 1 of the pre-drilled mounting holes. Drill new hole which will replace the nearest pre-drilled mounting hole.
- If no structure is existing in this area, it must be added at the outermost pre-drilled mounting hole, directly above the side pad. All other locations require a backer plate and pipe spacers (as needed).



**Figure 11**

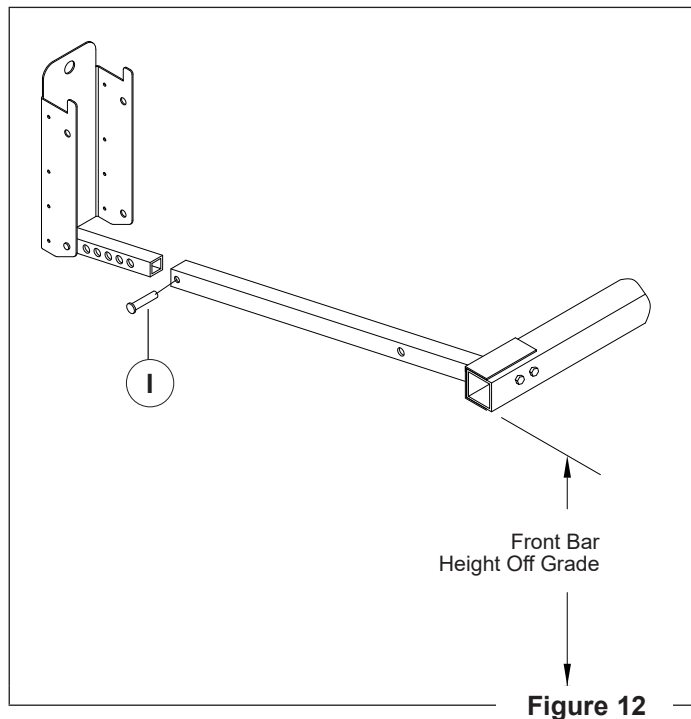
8. Review "[Mounting Methods](#)" on page 5.
9. Position top bar in brackets (F). Top bar must be secured to building in 6 locations (G).  
Top bar is pre-drilled, but other holes may be drilled in place of these in order to line up with building structure or to avoid obstacles.

## INSTALLATION

### Canopy Header *Continued*

10. After all the anchors are installed and tightened and the poly strip is seated properly at the back of the front bar, release the safety chains at the "S" hook locations (E) (Figure 8, page 8), and slowly lower the front bar to apply tension to the canopy cover.
11. When the front bar is self supporting, check the locations of the canopy cover's corners. Make sure there are no hang ups of fabric. The corners must fit properly so heavy loads (e.g. snow, ice) do not tear the canopy fabric.

After the corners are correct, bounce the header up and down slightly by pushing up on the front bar a maximum of about 1/2in [13mm]. This helps pull the fabric in the pocket around the front bar.



12. Measure height to bottom of front bar off grade and compare to value in the PAF. If the front bar needs to be raised, adjust the pin location (I) in the pivot arm extension.

**NOTE:** Typically, the bottom of the front bar is at least 12in [305mm] higher than the tallest trailer height. Each hole raises the front bar height  $\approx 2 \frac{1}{4}$ in [206mm] compared to the adjacent hole.

13. Caulk along the entire edge of the canopy top at the building wall, making sure the ends are covered.

Use a flexible caulk (appropriate for the conditions and materials/surfaces being joined).

14. Pull the canopy cover end caps (located at each end) down to cover the side frame.

Attach the end cap to the side frame backer using one of the screws holding on the mounting bracket.

**NOTE:** Attach the touch and hold fastener tab at the bottom, inside of the end cap to the mating touch and hold fastener near the front of the side pad. Secure so the end cap continues to lay flat and unwrinkled.

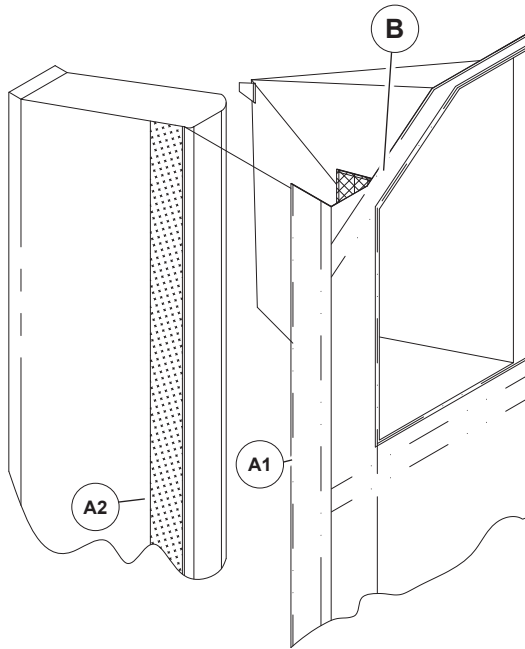
After side curtain installation, this tab will end up being clamped between the touch and hold fasteners on the side pad and the side curtain.

## INSTALLATION

### Side Curtains

**NOTE:** 620NH side curtain shown. Installation of 620G side curtain is identical.

**NOTE:** Always align outside touch and hold fastener flap (A1, A2) first.

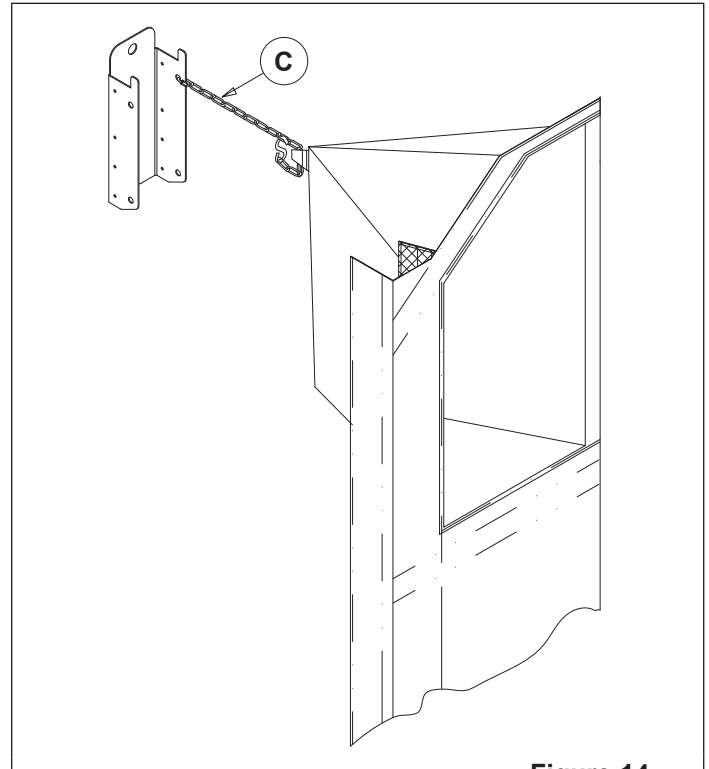


**Figure 13**

1. Position top edge of side curtain approximately 1in [25mm] above the top edge of the side frame and secure in place by pressing the touch and hold fastener on the outside mounting flap (A1) to the mating touch and hold fastener on the outside of the side frames (A2).

**NOTE:** When attaching the side curtain at the top, **DO NOT** let the weight of the side curtain hang on the side frame until at least 24in [610mm] of the touch and hold fastener is connected.

2. Make sure that the mounting flap on the outside of the side curtain completely covers and is properly aligned with the touch and hold fastener on the side frame.
3. Continue to align the mounting flap to the outside of the side frame touch and hold fastener and continue working downward to the bottom of the side frame. Keep continuous downward pressure on side curtain to avoid wrinkles in fabric.
4. Starting at the top, repeat Steps 1 and 2, with the inside mounting flap (B). The side curtain must be perpendicular to the side frame when finished.



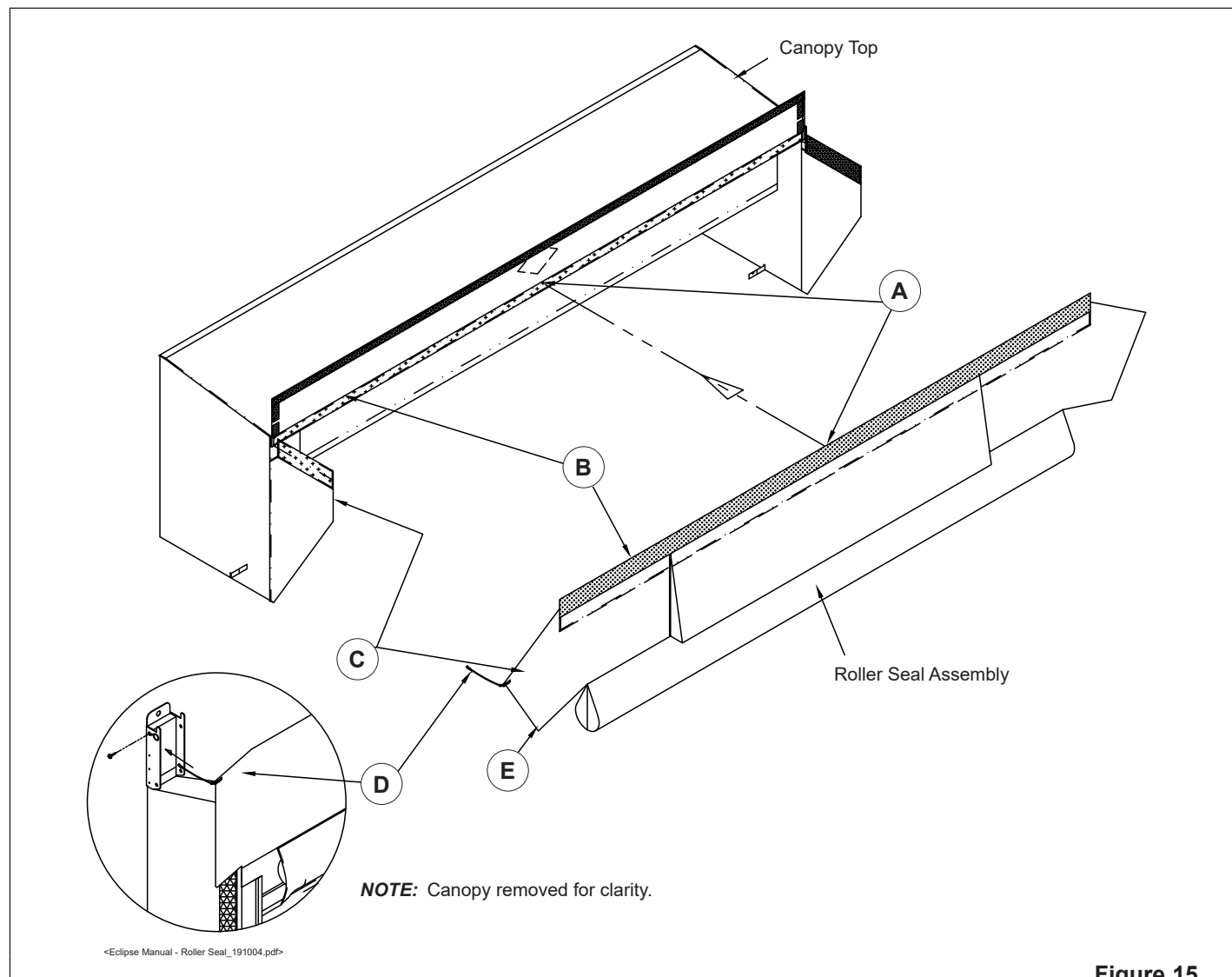
**Figure 14**

5. Attach the side curtain pocket to the canopy installation chain (C).
    - First, run the "S" hook link part of the chain through the loop on the pocket located at the top, backside of the side curtain.
    - Run the chain coming in the loop from the top. Pull the chain just short of putting tension on the pocket.
    - Take the "S" hook link and hook back onto the chain. Make sure chain is not tangled. "S" link does not have to be closed, but can be if desired.
- Do this for both sides.

## INSTALLATION

### Weighted Seal, Wear Panel

#### Position Roller Seal Assembly

**Figure 15**

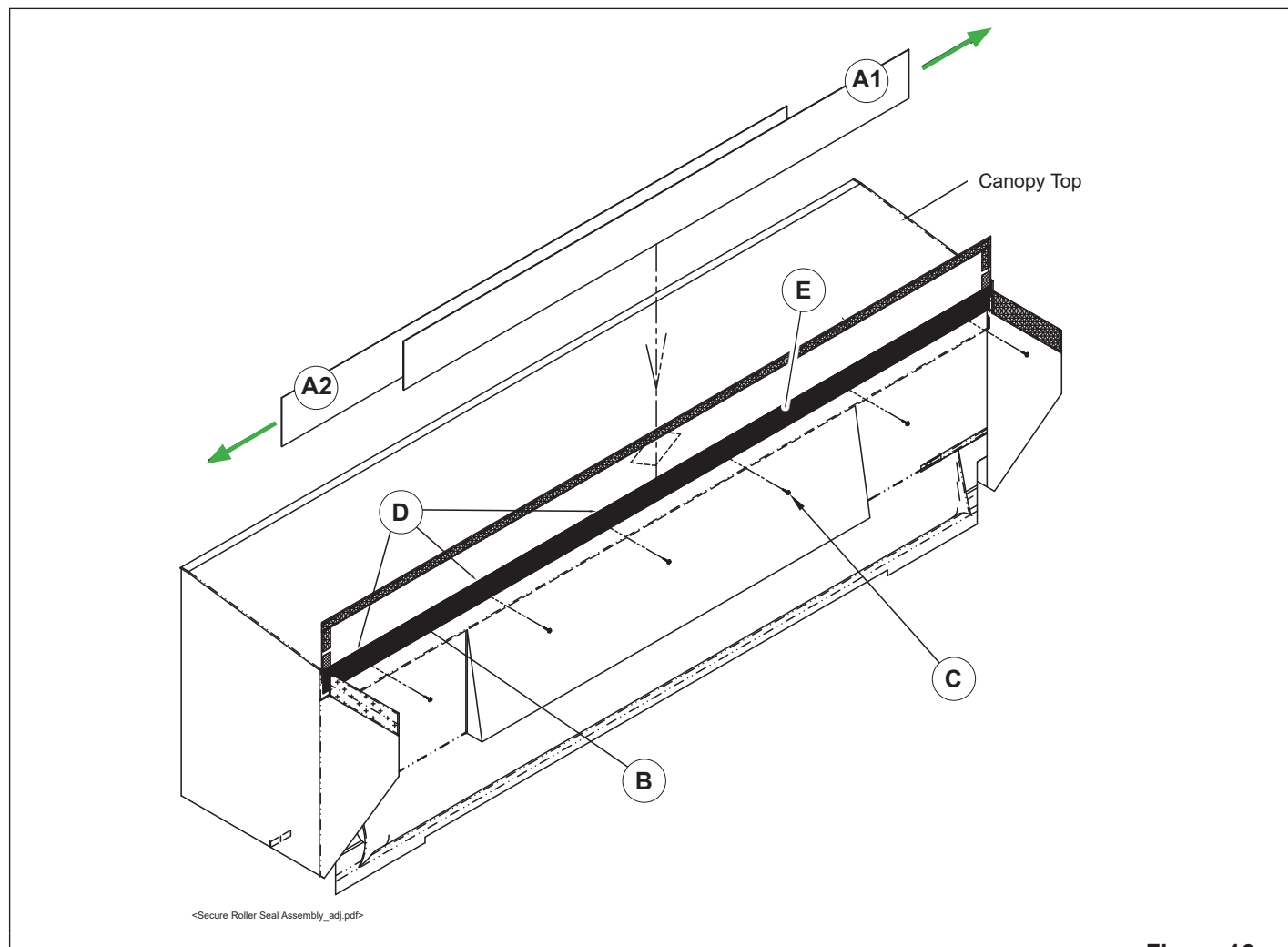
1. Position roller seal assembly so that center tabs (A) and top edges are aligned the full width (B) with the canopy top.
2. Tuck roller seal ends behind canopy end caps (C).
3. Connect strap to ring at back of the header (D) (on both sides).

**NOTE:** No windstraps are used on the bottom of the roller seal assembly (E).

## INSTALLATION

### Weighted Seal, Wear Panel *Continued*

#### Secure Roller Seal Assembly



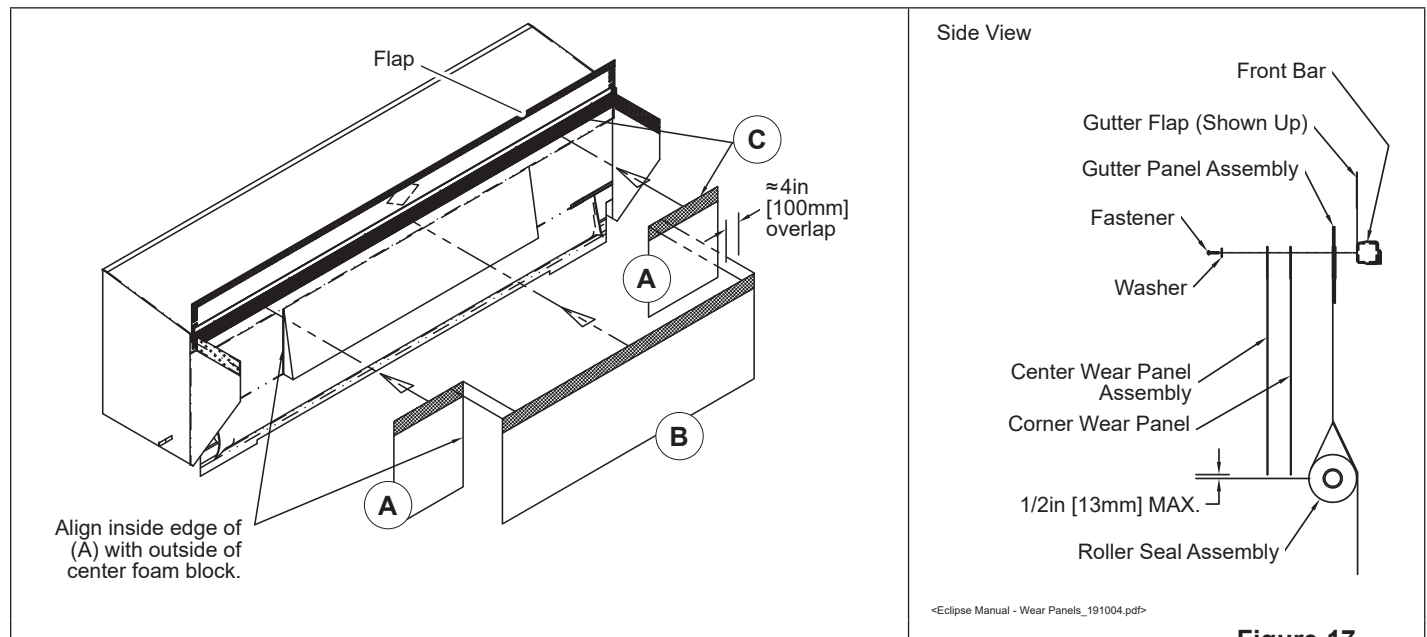
**Figure 16**

1. Insert gutter panels (A1, A2) in pocket (B) located behind 4in [102mm] touch and hold fastener on weighted seal.  
Slide 1 HMWPE panel right (A1) and 1 HMWPE panel left (A2) to fill entire width of pocket.
2. Secure seal assembly and gutter panel to front bar in 6 places with 1 1/4in [30mm] long self drill/tap screws (C).
  - Do not use washers with these 6 fasteners.
  - Align fasteners with tabs (D) on top edge of fabric flap (E).
  - Do not put screw at center location.

## INSTALLATION

### Weighted Seal, Wear Panel *Continued*

#### Position Wear Panels on Head Frame



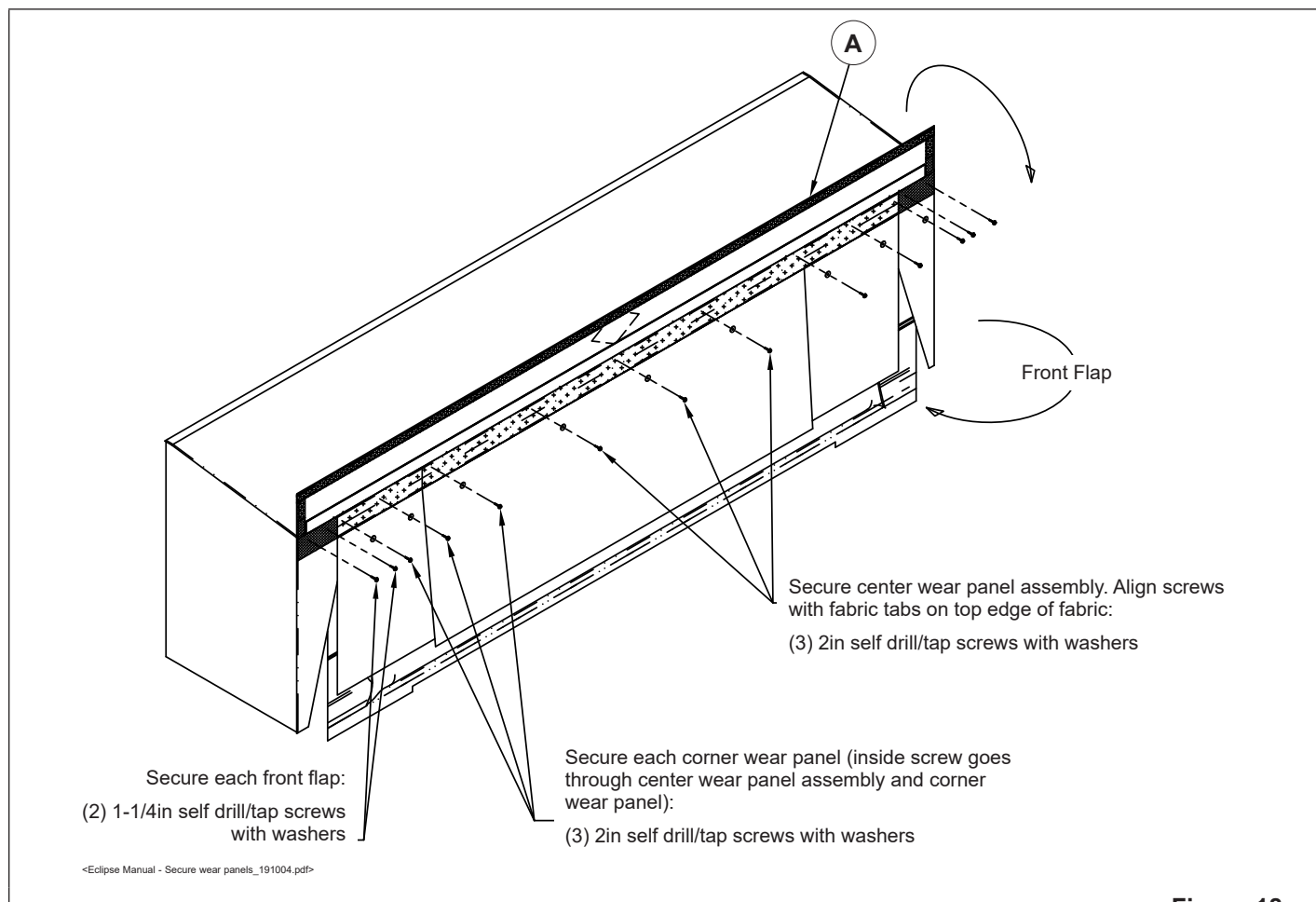
**Figure 17**

1. Align top edges of corner and center panels with top of touch and hold fasteners on the canopy (C).
  - Position both corner panels (A).
  - Center wear panel assembly (B) on center of unit width.

## INSTALLATION

### Weighted Seal, Wear Panel *Continued*

#### Secure Wear Panels, Front Flaps and Gutter Flap



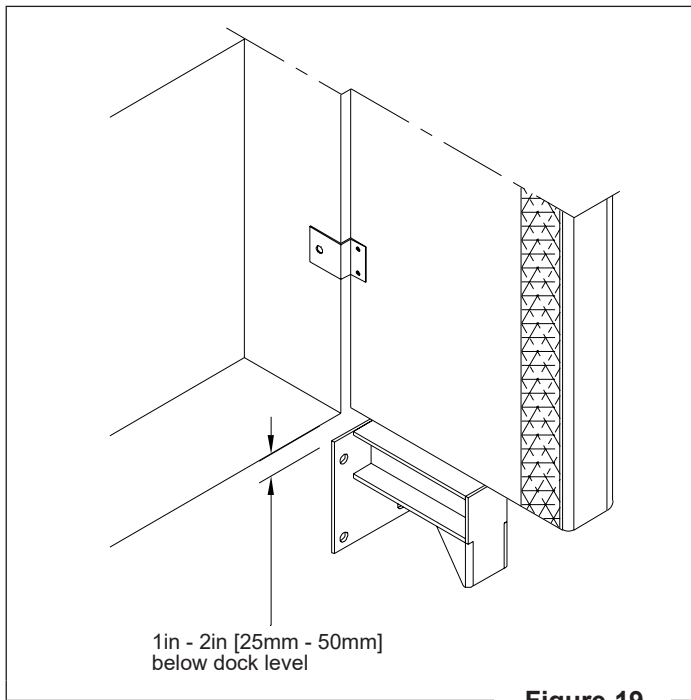
**Figure 18**

1. Install fasteners **(Figure 18)**.
2. Fold over gutter flap (A) and secure touch and hold fastener.



## INSTALLATION

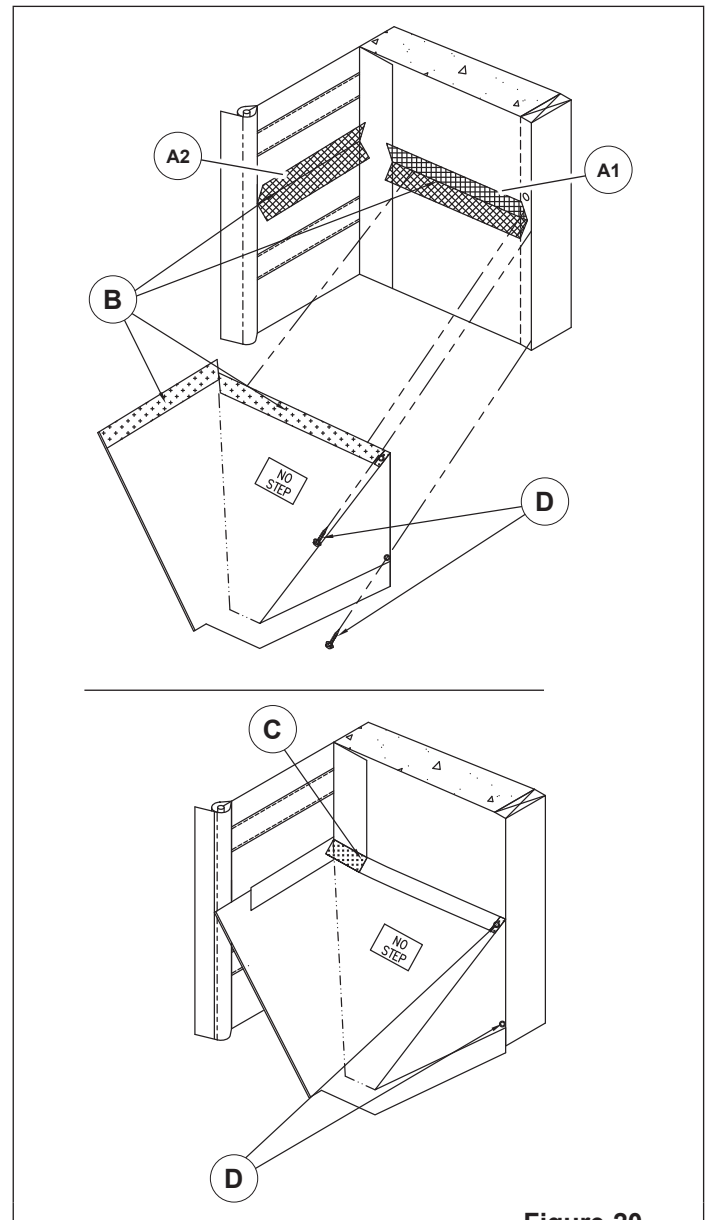
### Bumpers



**Figure 19**

1. Mount 1 bumper per side frame to the foundation wall.
2. Position bumpers so they are centered with the side frames, and located 1 in - 2 in [25mm - 50mm] below dock level.
3. Fasten the bumpers to the building's foundation wall. Use a 1/2 in lag bolt with expansion shields, 1/2 in 1 piece anchor bolts with expansion collar, or equivalent fastener. 4 anchors per bumper (required).

### Collapsible Style Draft Pad



**Figure 20**

1. Open attachment flap(s) on side member (A1) and back of side curtain (A2).
2. Align the draft pad's top edges to the center stitch lines on the attachment flaps (B). Press into place on touch and hold fasteners.
3. Flip down the upper flap(s) so they lay over the touch and hold fastener on the draft pad. The draft pad should fit exactly between the building wall and the back side of the side curtain (C).
4. Press firmly to attach.
5. Install 2 fasteners through the grommets into the backer board (or blockout) on the side frame (D).

This image shows a full page of blank, lined paper. It features approximately 28 horizontal blue or grey lines spaced evenly apart, typical of notebook paper. The lines extend across the entire width of the page, leaving small margins at the top and bottom. There are no vertical lines, text, or other markings on the page.

## MAINTENANCE

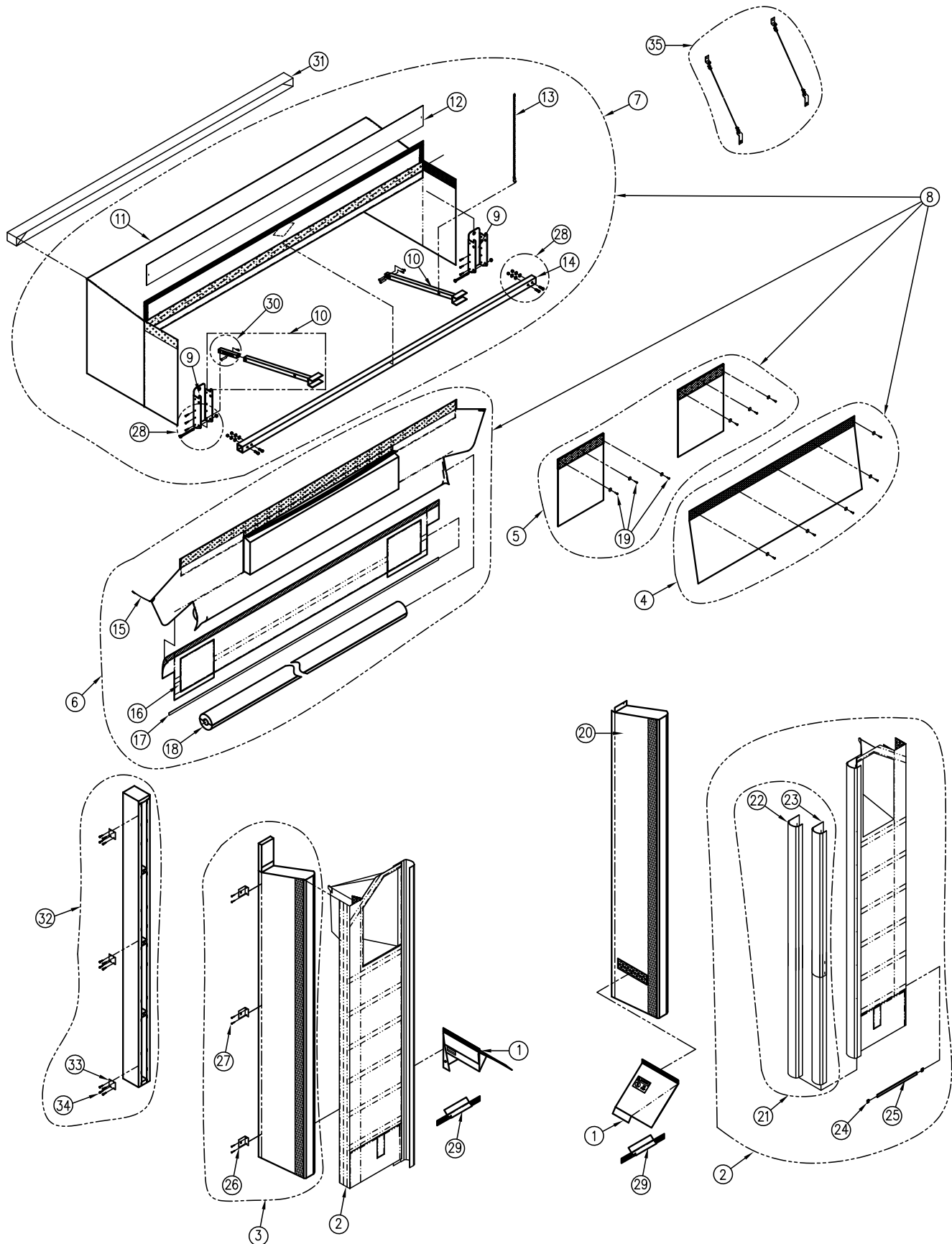
Before use, inspect all parts for damage. Repair and replace as required.

Clean/wash unit with a low pressure hose or damp cloth.

Keep unit free of snow and ice. Metal hoods are recommended to protect seals and shelters from rain and snow at docks without protective building projections and/or canopies.

## PARTS

### Exploded View – 620G



<Eclipse Manual - 620G Exploded Diagram\_191004.pdf>

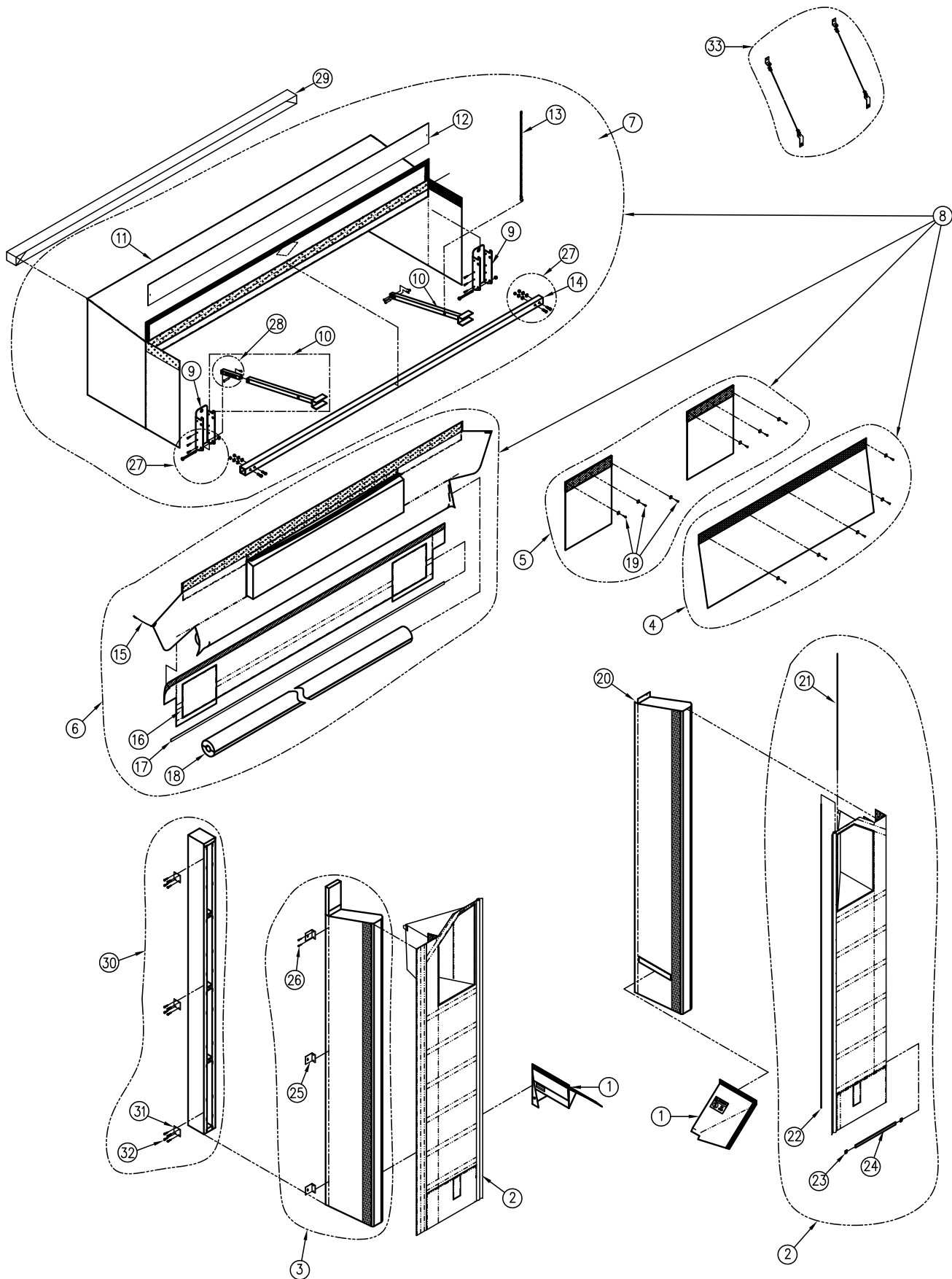
## PARTS

Exploded View – 620G *Continued*

| KEY | PART #                                       | ITEM DESCRIPTION                                                                                                                                                                                                                                                                         | KEY | PART #   | ITEM DESCRIPTION                                                                                                                                                                   |
|-----|----------------------------------------------|------------------------------------------------------------------------------------------------------------------------------------------------------------------------------------------------------------------------------------------------------------------------------------------|-----|----------|------------------------------------------------------------------------------------------------------------------------------------------------------------------------------------|
| ①   | S4113                                        | DRAFT PAD, 620 SVC<br>– DRAFT PAD ASSEMBLY<br>– HRDWR BAG, EGM DRAFT PAD (P/N 53610069)                                                                                                                                                                                                  | ⑩   | 45250113 | FABRIC, BACK FLAP, 620G, 10'–10" UNIT WIDTH                                                                                                                                        |
| ②   | S2858                                        | SIDE CURTAIN ASSEMBLY, 620, SVC<br>– COVER, SIDE CURTAIN (WITH STAYS)<br>– HOOK, SIDE, STD<br>– SLEEVE, HOOK, STD<br>– ROD, FIBERGLASS<br>– HOOK, TOP, STD                                                                                                                               |     | 45250114 | FABRIC, BACK FLAP, 620G, 11'–2" UNIT WIDTH                                                                                                                                         |
| ③   | S5673                                        | SIDE FRAME ASSEMBLY, 620, SVC<br>– SIDE FRAME<br>– MOUNTING BRACKETS, (1450####)<br>– SIDE PAD HARDWARE BAG (53612006)                                                                                                                                                                   |     | 45250115 | FABRIC, BACK FLAP, 620G, 11'–6" UNIT WIDTH                                                                                                                                         |
| ④   | 45260033<br>45260034                         | CENTER WEAR PANEL, 15" COVERAGE (INCLUDES HARDWARE)<br>CENTER WEAR PANEL, 21" COVERAGE (INCLUDES HARDWARE)                                                                                                                                                                               |     | 45250116 | FABRIC, BACK FLAP, 620G, 10'–10" UNIT WIDTH, FIRE RETARDANT                                                                                                                        |
| ⑤   | 45260021<br>45260030                         | TUPLY WEAR PANEL ASSEMBLY (PAIR)<br>TUPLY WEAR PANEL ASSEMBLY, 21" COVERAGE (PAIR)<br>– INCLUDES HARDWARE (53612020)                                                                                                                                                                     |     | 45250117 | FABRIC, BACK FLAP, 620G, 11'–2" UNIT WIDTH, FIRE RETARDANT                                                                                                                         |
| ⑥   | S6908                                        | WEIGHTED SWEEP SEAL ASSEMBLY, 620, SVC<br>– COVER, WEIGHTED SWEEP SEAL<br>– FABRIC, BACK FLAP<br>– STRAP, SEAL, TOP (PAIR)<br>– CYLINDER, FOAM, ASSEMBLY<br>– POLY, STRIP<br>– INCLUDES SIX 1/4 X 1 1/4" TEK SCREWS                                                                      |     | 45250118 | FABRIC, BACK FLAP, 620G, 11'–6" UNIT WIDTH, FIRE RETARDANT                                                                                                                         |
| ⑦   | S1617                                        | CANOPY ASSEMBLY, 620, SVC<br>– COVER, CANOPY<br>– BACKER, WOOD<br>– STRIP, POLY<br>– BRKT, MTG, STD, (RIGHT & LEFT PAIR)<br>– INSTALLATION CHAINS<br>– HARDWARE BAG, 620G<br>– HARDWARE BAG, IBBP<br>– GUTTER ASSEMBLY<br>– SIDE ARM ASSEMBLY (RIGHT & LEFT SET)<br>– FRONT BAR ASSEMBLY | ⑪   | 65452004 | STRIP, POLY, SVC                                                                                                                                                                   |
| ⑧   | S1618                                        | CANOPY COMPLETE, SVC<br>– CANOPY ASSY, 620<br>– WEIGHTED SWEEP ASSY<br>– TU–PLY WEAR PANELS<br>– SWEEP ASSY<br>– WIND RESTRAINT FLAP                                                                                                                                                     | ⑫   | S6763    | CYLINDER, FOAM, ASSEMBLY, SVC                                                                                                                                                      |
| ⑨   | 14501556<br>14501557<br>14501558<br>14501559 | BRKT, MTG, STD PITCH, 4"<br>BRKT, MTG, STD PITCH, 6"<br>BRKT, MTG, INT HOOD, 4"<br>BRKT, MTG, INT HOOD, 6"                                                                                                                                                                               | ⑬   | 53612020 | BAG, HARDWARE, TUPLY WEAR PANEL                                                                                                                                                    |
| ⑩   | S1138                                        | SIDE ARM ASSEMBLY, SVC<br>– (1) PIVOT ARM<br>– (1) EXTENSION<br>– (1) 1/2" X 1 3/4" CLEVIS PINS<br>– (2) BRIDGE PINS                                                                                                                                                                     | ⑭   | S1955    | COVER, SIDE FRAME, SVC                                                                                                                                                             |
| ⑪   | S1954                                        | CANOPY COVER, 620, SVC                                                                                                                                                                                                                                                                   | ⑮   | S5292    | REPLACEMENT HOOK & HOOK SLEEVE ASSEMBLY, 620, SVC<br>ROD, FIBERGLASS, 1/4"<br>HOOK, TOP, STD<br>HOOK, ASSEMBLY<br>HOOK, SLEEVE, 620G, SERVICE                                      |
| ⑫   | S5160                                        | GUTTER ASSEMBLY, 620, SVC                                                                                                                                                                                                                                                                | ⑯   | S7012    | HOOK, SLEEVE, 620, SVC                                                                                                                                                             |
| ⑬   | 16600069                                     | INSTALLATION CHAIN, SVC                                                                                                                                                                                                                                                                  | ⑰   |          | HOOK, ASSEMBLY (ONLY AVAILABLE WITH 2 OR 21)                                                                                                                                       |
| ⑭   | S4668                                        | FRONT BAR ASSEMBLY, SVC                                                                                                                                                                                                                                                                  | ⑱   | 16200092 | VINYL STAY CAP                                                                                                                                                                     |
| ⑮   | S7574                                        | STRAP, SEAL, TOP (PAIR), SVC                                                                                                                                                                                                                                                             | ⑲   | S7142    | STAY                                                                                                                                                                               |
|     |                                              |                                                                                                                                                                                                                                                                                          | ⑳   | 14500001 | BRACKET, L, W (1.5 X 2 X 3)                                                                                                                                                        |
|     |                                              |                                                                                                                                                                                                                                                                                          |     | 14500577 | BRACKET, 1/2" OFFSET                                                                                                                                                               |
|     |                                              |                                                                                                                                                                                                                                                                                          |     | 14500578 | BRACKET, 3/4" OFFSET                                                                                                                                                               |
|     |                                              |                                                                                                                                                                                                                                                                                          |     | 14500579 | BRACKET, 1" OFFSET                                                                                                                                                                 |
|     |                                              |                                                                                                                                                                                                                                                                                          |     | 14500580 | BRACKET, 1 1/4" OFFSET                                                                                                                                                             |
|     |                                              |                                                                                                                                                                                                                                                                                          |     | 14500581 | BRACKET, 1 1/2" OFFSET                                                                                                                                                             |
|     |                                              |                                                                                                                                                                                                                                                                                          |     | 14500582 | BRACKET, 1 3/4" OFFSET                                                                                                                                                             |
|     |                                              |                                                                                                                                                                                                                                                                                          |     | 14500583 | BRACKET, 2" OFFSET                                                                                                                                                                 |
|     |                                              |                                                                                                                                                                                                                                                                                          |     | 14500584 | BRACKET, 2 1/4" OFFSET                                                                                                                                                             |
|     |                                              |                                                                                                                                                                                                                                                                                          |     | 14500585 | BRACKET, 2 1/2" OFFSET                                                                                                                                                             |
|     |                                              |                                                                                                                                                                                                                                                                                          |     | 14500586 | BRACKET, 2 3/4" OFFSET                                                                                                                                                             |
|     |                                              |                                                                                                                                                                                                                                                                                          |     | 14500587 | BRACKET, 3" OFFSET                                                                                                                                                                 |
|     |                                              |                                                                                                                                                                                                                                                                                          |     | 14500588 | BRACKET, 3 1/4" OFFSET                                                                                                                                                             |
|     |                                              |                                                                                                                                                                                                                                                                                          |     | 14500589 | BRACKET, 3 1/2" OFFSET                                                                                                                                                             |
|     |                                              |                                                                                                                                                                                                                                                                                          |     | 14500590 | BRACKET, 3 3/4" OFFSET                                                                                                                                                             |
|     |                                              |                                                                                                                                                                                                                                                                                          | ㉑   | 53612005 | HARDWARE BAG, SINGLE SIDE PAD, WOOD BACKER                                                                                                                                         |
|     |                                              |                                                                                                                                                                                                                                                                                          |     | 53612006 | HARDWARE BAG, PAIR OF SIDE PADS, WOOD BACKER                                                                                                                                       |
|     |                                              |                                                                                                                                                                                                                                                                                          | ㉒   | 53610070 | BAG, HARDWARE, 620, SVC                                                                                                                                                            |
|     |                                              |                                                                                                                                                                                                                                                                                          | ㉓   | 45760001 | RETROFIT DRAFT PAD ATTACHMENT FLAP<br>(REQUIRED WHEN REPLACING DRAFT PADS ON 620G UNITS<br>ORIGINALLY SHIPPED PRIOR TO AUGUST 15, 2015, UNLESS<br>SIDE CURTAIN HAS BEEN REPLACED.) |
|     |                                              |                                                                                                                                                                                                                                                                                          | ㉔   | 44750044 | PIVOT ARM EXTENSION<br>– (1) EXTENSION<br>– (1) 1/2" X 1 3/4" CLEVIS PIN<br>– (1) 1/2" X 2 1/4" CLEVIS PIN<br>– (2) BRIDGE PINS                                                    |
|     |                                              |                                                                                                                                                                                                                                                                                          | ㉕   | S1322    | BLOCKOUT, HEAD CURTAIN                                                                                                                                                             |
|     |                                              |                                                                                                                                                                                                                                                                                          | ㉖   | S1321    | BLOCKOUT, SIDE PAD                                                                                                                                                                 |
|     |                                              |                                                                                                                                                                                                                                                                                          | ㉗   | 14500178 | BRACKET, BLOCKOUT                                                                                                                                                                  |
|     |                                              |                                                                                                                                                                                                                                                                                          | ㉘   | 53610025 | HARDWARE BAG, SIDE PAD BLOCKOUT                                                                                                                                                    |
|     |                                              |                                                                                                                                                                                                                                                                                          | ㉙   | 53602014 | HARDWARE BAG, 2 CABLE SUPPORT KIT                                                                                                                                                  |

## PARTS

### Exploded View – 620NH



<Eclipse Manual - 620NH Exploded Diagram\_191004.pdf>

## PARTS

Exploded View – 620NH *Continued*

| KEY | PART #                                       | ITEM DESCRIPTION                                                                                                                                                                                                                                                        | PART # | ITEM DESCRIPTION                                                                                                                                                                                                                                                                                                                                                                                                                                                                                                               |
|-----|----------------------------------------------|-------------------------------------------------------------------------------------------------------------------------------------------------------------------------------------------------------------------------------------------------------------------------|--------|--------------------------------------------------------------------------------------------------------------------------------------------------------------------------------------------------------------------------------------------------------------------------------------------------------------------------------------------------------------------------------------------------------------------------------------------------------------------------------------------------------------------------------|
| ①   | S4113                                        | DRAFT PAD, 620 SVC<br>– DRAFT PAD ASSEMBLY<br>– HRDWR BAG, EGM DRAFT PAD (P/N 53610069)                                                                                                                                                                                 | ②⑤     | 14500001 BRACKET, L, W (1.5 X 2 X 3)<br>14500577 BRACKET, 1/2" OFFSET<br>14500578 BRACKET, 3/4" OFFSET<br>14500579 BRACKET, 1" OFFSET<br>14500580 BRACKET, 1 1/4" OFFSET<br>14500581 BRACKET, 1 1/2" OFFSET<br>14500582 BRACKET, 1 3/4" OFFSET<br>14500583 BRACKET, 2" OFFSET<br>14500584 BRACKET, 2 1/4" OFFSET<br>14500585 BRACKET, 2 1/2" OFFSET<br>14500586 BRACKET, 2 3/4" OFFSET<br>14500587 BRACKET, 3" OFFSET<br>14500588 BRACKET, 3 1/4" OFFSET<br>14500589 BRACKET, 3 1/2" OFFSET<br>14500590 BRACKET, 3 3/4" OFFSET |
| ②   | S2858                                        | SIDE CURTAIN ASSEMBLY, 620, SVC<br>–(INCLUDES STAYS AND FIBERGLASS RODS)                                                                                                                                                                                                | ②⑥     | 53612005 HARDWARE BAG, SINGLE SIDE PAD, WOOD BACKER<br>53612006 HARDWARE BAG, PAIR OF SIDE PADS, WOOD BACKER                                                                                                                                                                                                                                                                                                                                                                                                                   |
| ③   | S5673                                        | SIDE FRAME ASSEMBLY, 620, SVC<br>–SIDE FRAME<br>–MOUNTING BRACKETS, (1450####)<br>–SIDE PAD HARDWARE BAG (53612006)                                                                                                                                                     | ②⑦     | 53610070 BAG,HARDWARE,620,SVC                                                                                                                                                                                                                                                                                                                                                                                                                                                                                                  |
| ④   | 45260033<br>45260034                         | CENTER WEAR PANEL, 15" COVERAGE (INCLUDES HARDWARE)<br>CENTER WEAR PANEL, 21" COVERAGE (INCLUDES HARDWARE)                                                                                                                                                              | ②⑧     | 44750044 PIVOT ARM EXTENSION<br>–(1) EXTENSION<br>–(1) 1/2" X 1 3/4" CLEVIS PIN<br>–(1) 1/2" X 2 1/4" CLEVIS PIN<br>–(2) BRIDGE PINS                                                                                                                                                                                                                                                                                                                                                                                           |
| ⑤   | 45260021<br>45260030                         | TUPLY WEAR PANEL ASSEMBLY (PAIR)<br>TUPLY WEAR PANEL ASSEMBLY, 21" COVERAGE (PAIR)<br>–INCLUDES HARDWARE (53612020)                                                                                                                                                     | ②⑨     | S1322 BLOCKOUT, HEAD CURTAIN                                                                                                                                                                                                                                                                                                                                                                                                                                                                                                   |
| ⑥   | S6908                                        | WEIGHTED SWEEP SEAL ASSEMBLY, 620, SVC<br>–COVER,WEIGHTED SWEEP SEAL<br>–FABRIC,BACK FLAP<br>–STRAP,SEAL,TOP (PAIR)<br>–CYLINDER,FOAM,ASSEMBLY<br>–POLY,STRIP<br>–INCLUDES SIX 1/4 X 1 1/4" TEK SCREWS                                                                  | ③①     | 14500178 BRACKET, BLOCKOUT                                                                                                                                                                                                                                                                                                                                                                                                                                                                                                     |
| ⑦   | S1617                                        | CANOPY ASSEMBLY, 620, SVC<br>–COVER, CANOPY<br>–BACKER, WOOD<br>–STRIP,POLY<br>–BRKT,MTG,STD,(RIGHT & LEFT PAIR)<br>–INSTALLATION CHAINS<br>–HARDWARE BAG,620<br>–HARDWARE BAG,IBBP<br>–GUTTER ASSEMBLY<br>–SIDE ARM ASSEMBLY (RIGHT & LEFT SET)<br>–FRONT BAR ASSEMBLY | ③②     | 53610025 HARDWARE BAG, SIDE PAD BLOCKOUT                                                                                                                                                                                                                                                                                                                                                                                                                                                                                       |
| ⑧   | S1618                                        | CANOPY COMPLETE, SVC<br>–CANOPY ASSEMBLY<br>–WEIGHTED SWEEP ASSEMBLY<br>–TUPLY WEAR PANELS<br>–SWEEP ASSEMBLY<br>–WIND RESTRAINT FLAP                                                                                                                                   | ③③     | 53602014 HARDWARE BAG, 2 CABLE SUPPORT KIT                                                                                                                                                                                                                                                                                                                                                                                                                                                                                     |
| ⑨   | 14501556<br>14501557<br>14501558<br>14501559 | BRKT, MTG, STD PITCH, 4"<br>BRKT, MTG, STD PITCH, 6"<br>BRKT, MTG, INT HOOD, 4"<br>BRKT, MTG, INT HOOD, 6"                                                                                                                                                              |        |                                                                                                                                                                                                                                                                                                                                                                                                                                                                                                                                |
| ⑩   | S1138                                        | SIDE ARM ASSEMBLY,SVC<br>– (1) PIVOT ARM<br>– (1) EXTENSION<br>– (1) 1/2" X 1 3/4" CLEVIS PIN<br>– (1) BRIDGE PINS                                                                                                                                                      |        |                                                                                                                                                                                                                                                                                                                                                                                                                                                                                                                                |
| ⑪   | S1954                                        | CANOPY COVER, 620, SVC                                                                                                                                                                                                                                                  |        |                                                                                                                                                                                                                                                                                                                                                                                                                                                                                                                                |
| ⑫   | S5160                                        | GUTTER ASSEMBLY, SVC                                                                                                                                                                                                                                                    |        |                                                                                                                                                                                                                                                                                                                                                                                                                                                                                                                                |
| ⑬   | 16600069                                     | INSTALLATION CHAIN, SVC                                                                                                                                                                                                                                                 |        |                                                                                                                                                                                                                                                                                                                                                                                                                                                                                                                                |
| ⑭   | S4668                                        | FRONT BAR ASSEMBLY, SVC                                                                                                                                                                                                                                                 |        |                                                                                                                                                                                                                                                                                                                                                                                                                                                                                                                                |
| ⑮   | S7574                                        | STRAP,SEAL,TOP (PAIR), SVC                                                                                                                                                                                                                                              |        |                                                                                                                                                                                                                                                                                                                                                                                                                                                                                                                                |
| ⑯   | 45250109<br>45250110<br>45250111<br>45250112 | FABRIC,BACK FLAP,620NH,11'–2" UNIT WIDTH<br>FABRIC,BACK FLAP,620NH,11'–6" UNIT WIDTH<br>FABRIC,BACK FLAP,620NH,11'–2" UNIT WIDTH,FIRE RETARDANT<br>FABRIC,BACK FLAP,620NH,11'–6" UNIT WIDTH,FIRE RETARDANT                                                              |        |                                                                                                                                                                                                                                                                                                                                                                                                                                                                                                                                |
| ⑰   | 65452004                                     | STRIP,POLY,SVC                                                                                                                                                                                                                                                          |        |                                                                                                                                                                                                                                                                                                                                                                                                                                                                                                                                |
| ⑱   | S6763                                        | CYLINDER,FOAM,ASSEMBLY, SVC                                                                                                                                                                                                                                             |        |                                                                                                                                                                                                                                                                                                                                                                                                                                                                                                                                |
| ⑲   | 53612020                                     | BAG,HARDWARE,TUPLY WEAR PANEL                                                                                                                                                                                                                                           |        |                                                                                                                                                                                                                                                                                                                                                                                                                                                                                                                                |
| ⑳   | S1955                                        | COVER, SIDE FRAME, SVC                                                                                                                                                                                                                                                  |        |                                                                                                                                                                                                                                                                                                                                                                                                                                                                                                                                |
| ㉑   | 45400030                                     | ROD, FIBERGLASS, 3/8" x 45 3/4",SVC                                                                                                                                                                                                                                     |        |                                                                                                                                                                                                                                                                                                                                                                                                                                                                                                                                |
| ㉒   | 45400034                                     | FIBERGLASS, ROD, 3/8" x 156"                                                                                                                                                                                                                                            |        |                                                                                                                                                                                                                                                                                                                                                                                                                                                                                                                                |
| ㉓   | 16200092                                     | VINYL STAY CAP                                                                                                                                                                                                                                                          |        |                                                                                                                                                                                                                                                                                                                                                                                                                                                                                                                                |
| ㉔   | S7142                                        | STAY                                                                                                                                                                                                                                                                    |        |                                                                                                                                                                                                                                                                                                                                                                                                                                                                                                                                |

Rite-Hite Company, LLC and its affiliates (collectively "Rite-Hite") warrant that the Product sold to the Owner will be free of defects in design, materials and workmanship (ordinary wear and tear excepted) for the periods set forth below ("Limited Warranty").

One (1) Year(s) on all mechanical and electrical parts (non-prorated).  
One (1) Year(s) labor, based on Rite-Hite approved travel and labor repair times.

## REMEDIES

**Parts:** Rite-Hite's obligations under this Limited Warranty are limited to repairing or replacing, at Rite-Hite's option, any part which is determined by Rite-Hite to be defective during the applicable warranty period. Such repair or replacement shall be Rite-Hite's sole obligation and the Owner's exclusive remedy under this Limited Warranty.

**Labor:** Rite-Hite will provide warranty service without charge for labor per the specified warranty period. Thereafter, a charge will apply to any repair or replacement under this Limited Warranty.

**CLAIMS** Claims under this Limited Warranty must be made (i) within 30 (thirty) days after discovery and (ii) prior to expiration of the applicable warranty period. Warranty period commences on the date of shipment. Claims shall be made in writing or by contacting the representative from whom the Product was purchased directly. Owner must allow Rite-Hite or its agent, a reasonable opportunity to inspect any Product claimed to be defective and shall, at Rite-Hite's option, either (x) grant Rite-Hite or its agent access to Owner's premises for the purpose of repairing or replacing the Product or (y) return of the Product to the Rite-Hite, F.O.B. Rite-Hite's factory.

**NOT WARRANTED** Rite-Hite does not warrant against and is not responsible for wear items such as fuses, batteries, bulbs, vision and seals. No implied warranty shall be deemed to cover damages that result directly or indirectly from: (i) the unauthorized modification or repair of the Product, (ii) damage due to misuse, neglect, accident, failure to provide necessary maintenance, or normal wear and tear of the Product, (iii) failure to follow Rite-Hite's instructions for installation, failure to operate the Product within the Product's rated capacities and/or specified design parameters, or failure to properly maintain the Product, (iv) use of the Product in a manner that is inconsistent with Rite-Hite's guidelines or local building codes, (v) movement, settling, distortion, or collapse of the ground, or of improvements to which the Products are affixed, (vi) fire, flood, earthquake, elements of nature or acts of God, riots, civil disorder, war, or any other cause beyond the reasonable control of Rite-Hite, (vii) improper handling, storage, abuse, or neglect of the Product by Owner or by any third party.

**DISCLAIMERS** THIS LIMITED WARRANTY IS EXCLUSIVE AND IN LIEU OF ALL OTHER REPRESENTATIONS AND WARRANTIES, EXPRESS OR IMPLIED, AND RITE-HITE EXPRESSLY DISCLAIMS AND EXCLUDES ANY IMPLIED WARRANTIES OF MERCHANTABILITY OR FITNESS FOR PURPOSE. RITE-HITE SHALL NOT BE SUBJECT TO ANY OTHER OBLIGATIONS OR LIABILITIES, WHETHER ARISING OUT OF BREACH OF CONTRACT, WARRANTY, TORT (INCLUDING NEGLIGENCE AND STRICT LIABILITY) OR OTHER THEORIES OF LAW, WITH RESPECT TO THE PRODUCTS SOLD OR SERVICES RENDERED BY RITE-HITE, OR ANY UNDERTAKINGS, ACTS, OR OMISSIONS RELATING THERETO.

**LIMITATION OF LIABILITY** IN NO EVENT SHALL RITE-HITE BE RESPONSIBLE FOR, OR LIABLE TO ANYONE FOR, SPECIAL, INDIRECT, COLLATERAL, PUNITIVE, INCIDENTAL, OR CONSEQUENTIAL DAMAGES, EVEN IF RITE-HITE HAS BEEN ADVISED OF THE POSSIBILITY OF SUCH DAMAGES. Such excluded damages include, but are not limited to, personal injury, damage to property, loss of goodwill, loss of profits, loss of use, cost of cover with any substitute product, interruption of business, or other similar indirect financial loss.

170714

## GLOBAL SALES AND SERVICE *Representatives in All Major Cities*

### RITE-HITE WORLD HEADQUARTERS

8900 N. Arbon Drive  
P.O. Box 245020  
Milwaukee, Wisconsin 53224

☎ **414-355-2600**  
U.S. Only: **1-800-456-0600**

### RITE-HITE CHINA

First Floor, Building #3,  
558 Tongxie Road,  
Changning District  
Shanghai 200335, China

☎ **+86-21-6237-6333**

### RITE-HITE LATIN AMERICA

Alameda Lorena 800, conj. 1310  
- Jardim Paulista  
São Paulo-SP, CEP 10424-001  
- Brazil

☎ **+55-11-3527-9590**

### RITE-HITE GMBH

Carl-Zeiss-Strasse 3  
34471 Volkmarsen, Germany

☎ **+49-5693 98700**