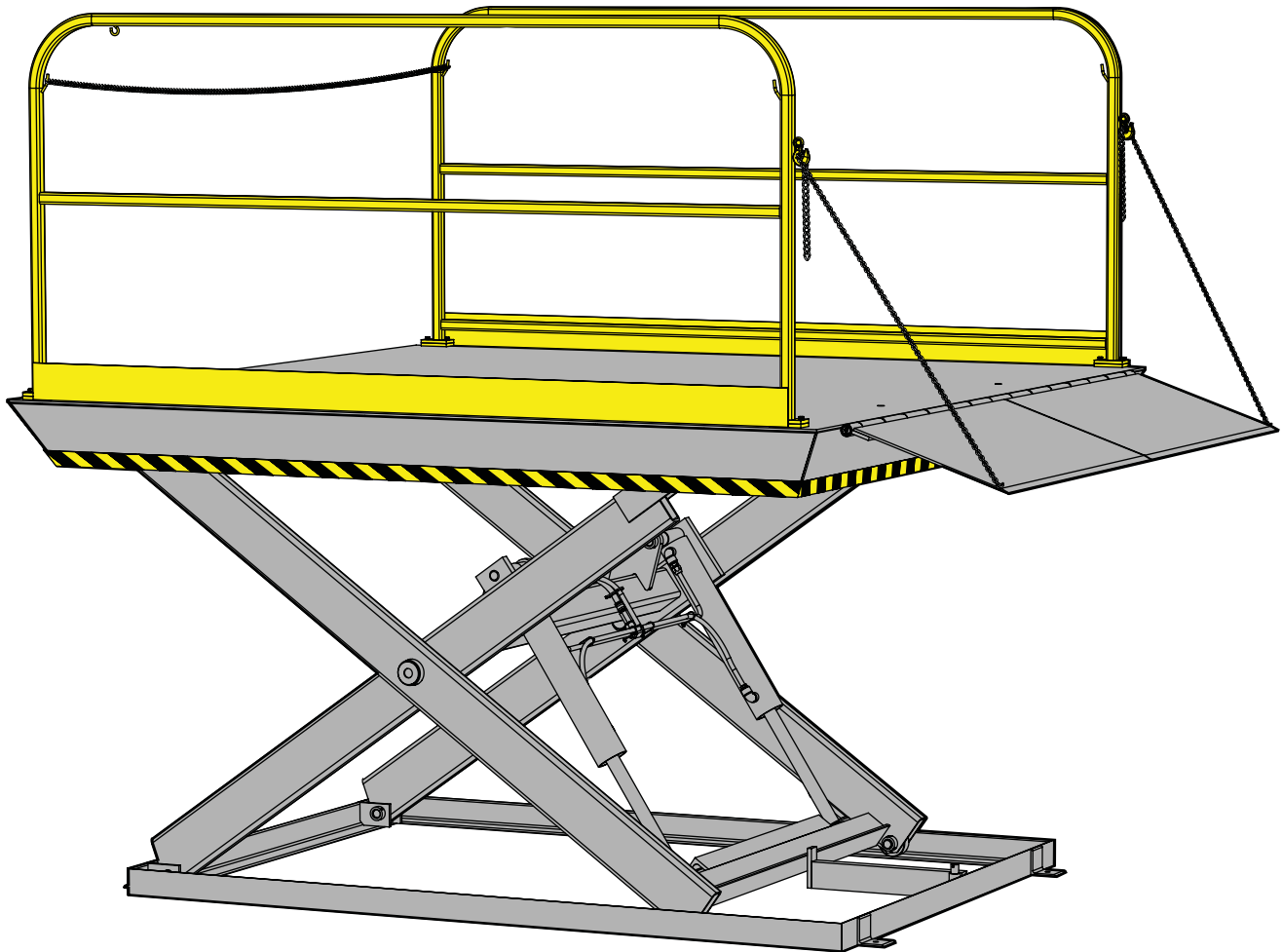


LRL (Level-Rite™ Lift)

Elevating Dock Lift Owners Manual



RITE·HITE®
ALWAYS LOOKING AHEAD



This Manual Covers Dock Lifts Built After Serial Numbers:
07-LC450001C and up

PRINTED IN U.S.A.
RITE-HITE PRINT SHOP

PUBLICATION NO. 1240
MAY 2014

NOTES

TABLE OF CONTENTS

INTRODUCTION	3
PRODUCT SPECIFIC WARRANTY	3
NOTICE TO USER	3
SAFETY WARNINGS	4
GENERAL FEATURES	8
OPERATION INSTRUCTIONS	9
MAINTENANCE PROCEDURES	10
TROUBLESHOOTING AND ADJUSTMENTS	11
HYDRAULIC SCHEMATICS	12
ELECTRICAL SCHEMATIC	13
REPLACEMENT PARTS	16

INTRODUCTION

The LRL Series Elevating Dock Lift by Rite-Hite is designed to provide a safer work place for workers in shipping and receiving dock areas. The LRL Series Elevating Dock Lift is a hydraulic device that, when properly installed and operated provides safe and secure access between truck and dock. The LRL Series Elevating Dock Lift is operated from a pendant control station.

PRODUCT SPECIFIC WARRANTY

Rite-Hite warrants the LRL Series Elevating Dock Lift for one-year parts and labor from date of shipment in accordance with Rite-Hite's Standard Warranty Policy.

IMPORTANT

Read and understand contents of this manual prior to installation or operation of this equipment.
For best results, have this product serviced by your authorized Rite-Hite representative.

NOTICE TO USER

Your local Rite-Hite representative provides a Planned Maintenance Program (P.M.P.) which can be fitted to your specific operation. Call your local representative or the Rite-Hite at 414-355-2600.

The Rite-Hite products in this manual are covered by one or more of the following U.S. patents: 5,271,183; 5,323,503; 5,546,623; 5,553,987; 5,582,498; 5,664,930; 5,702,223; 5,762,459 (RE: 37,570); 5,882,167; 6,065,172; 6,070,283; 6,085,375; 6,092,970; 6,106,212; 6,116,839; 6,190,109; 6,220,809; 6,276,016; 6,311,352; 6,318,947; 6,322,310; 6,360,394; 6,368,043; 6,431,819; 6,488,464; 6,499,169; 6,505,713; 6,524,053; 6,634,049; 6,726,432; 6,773,221; 6,832,403; 6,880,301; 6,892,411; 7,032,267; 7,062,814; 7,134,159; 7,213,285; 7,216,391; 7,363,670; 7,380,305; 7,503,089; 7,533,431; 7,546,655; 7,584,517; 7,681,271; 7,841,823; 7,877,831; 7,823,239; 8,006,811; 8,065,770; 8,141,189 and pending U.S and foreign patent applications. RITE-HITE®, THINMAN™, SAFE-T-LIP®, HYDRACHEK®, WHEEL-LOK™, DOK-LOK®, DUAL-DOK®, SAFE-T-STRUT™, DOK-COMMANDER®, JUMBO™, HYDRA-RITE™, SAFE-T-GATE®, RITE-VU™ LIGHT COMMUNICATION SYSTEM and SMOOTH TRANSITION DOK SYSTEM™, are trademarks of Rite-Hite®.

SAFETY WARNINGS

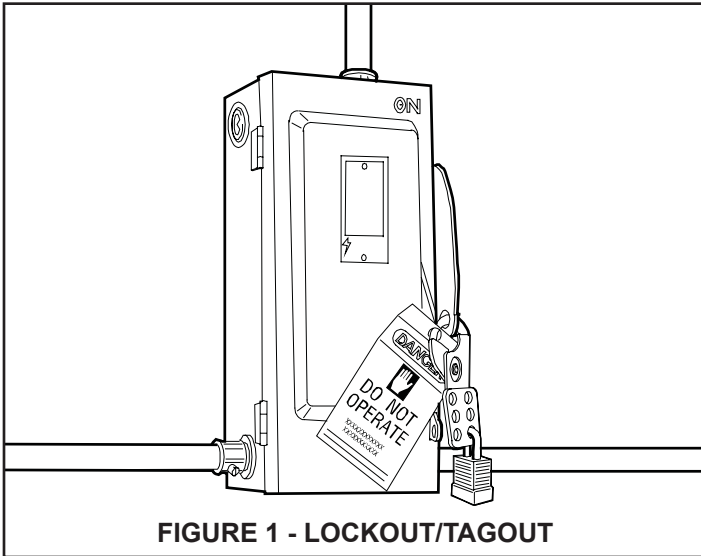


FIGURE 1 - LOCKOUT/TAGOUT

WARNING

When working with electrical or electronic controls, make sure that the power source has been locked out and tagged according to OSHA regulations and approved local electrical codes.

LOCKOUT/TAGOUT PROCEDURES

The Occupational Safety and Health Administration requires that, in addition to posting safety warnings and barricading the work area, the power supply has been locked in the OFF position or disconnected. It is mandatory that an approved lockout device is utilized. An example of a lockout device is illustrated. The proper lockout procedure requires that the person responsible for the repairs is the only person who has the ability to remove the lockout device.

In addition to the lockout device, it is also a requirement to tag the power control in a manner that will clearly note that repairs are under way and state who is responsible for the lockout condition. Tagout devices have to be constructed and printed so that exposure to weather conditions or wet and damp locations will not cause the tag to deteriorate or become unreadable.

RITE-HITE Corporation does not recommend any particular lockout device, but recommends the utilization of an OSHA approved device (refer to OSHA regulation 1910.147). RITE-HITE Corporation also recommends the review and implementation of an entire safety program for the Control of Hazardous Energy (Lockout/Tagout). These regulations are available through OSHA publication 3120.

DANGER

This is the highest level statement. Failure to follow the listed instructions will most likely result in severe injury or death.

CAUTION

The statements used with this level of warning deal with a safe operating procedure. If the procedure is ignored, the possibility of personal injury may exist.

WARNING

This is a statement of serious hazard. Failure to follow the listed instructions could place the individual at risk of serious injury or death.

IMPORTANT

IMPORTANT is used to draw attention to a procedure that needs to be followed to prevent machine or property damage.

OTHER IMPORTANT SAFETY WARNINGS

DANGER

Never be under the LRL platform or lip without:

- Engaging the Maintenance Strut.
- Turning off power to the control box.
- Locking out and tagging out the main power source, as shown under Safety Warnings on preceding page.

WARNING

Always barricade the LRL at ground level and dock level from any form of traffic when maintenance is required.

CAUTION

Inspect the LRL monthly to ensure that there are no broken or worn parts which could cause injury to personnel or damage to the equipment.

WARNING

- Before starting installation or maintenance, check and follow the safety procedures of the facility where the LRL is being installed.
- Never enter a truck/trailer until its brakes are set, air has been dumped from air ride suspension (if applicable), and you have visually inspected to be sure truck/trailer is securely held in place by a vehicle restraint or wheel chock per OSHA regulations.
- DO NOT operate with anyone under platform or in front of the lip.
- Keep hands, limbs and loose hair clear of equipment when operating. DO NOT wear loose clothing or jewelry while operating this equipment.
- When docklift is not in use, it is recommended to store it with the platform fully lowered.
- If a malfunction does occur, always call your authorized RITE-HITE service representative immediately.

SAFETY DEVICES

DANGER

Never be under the LRL Series Elevating Dock Lift platform or lip without:

- Engaging the Maintenance Strut. See below right.
 - Press UP Button until platform reaches its highest position.
 - Place Maintenance Strut in position. See Figure 2.
 - Press DOWN Button until platform stops and Maintenance Strut is engaged.
- Lockout/Tagout power supply.
 - Turn off the power to the control box.
 - Lockout/tagout the main power source, as shown under Safety Warnings on the inside front cover of this manual.
 - Always barricade the dock lift at dock level and drive level to prevent any unauthorized use of the dock lift.

Remove the Maintenance Strut.

- For Maintenance Strut removal, raise the dock lift to its highest position. Return the Maintenance Strut to the proper storage position.
- If you are unable to install the Maintenance Strut properly, contact your authorized RITE-HITE Service Representative or RITE-HITE Customer Service at 1-800-456-0600.

CAUTION

- Post warnings and barricades at dock level and at drive level to indicate that work is being done around and under the lift table.

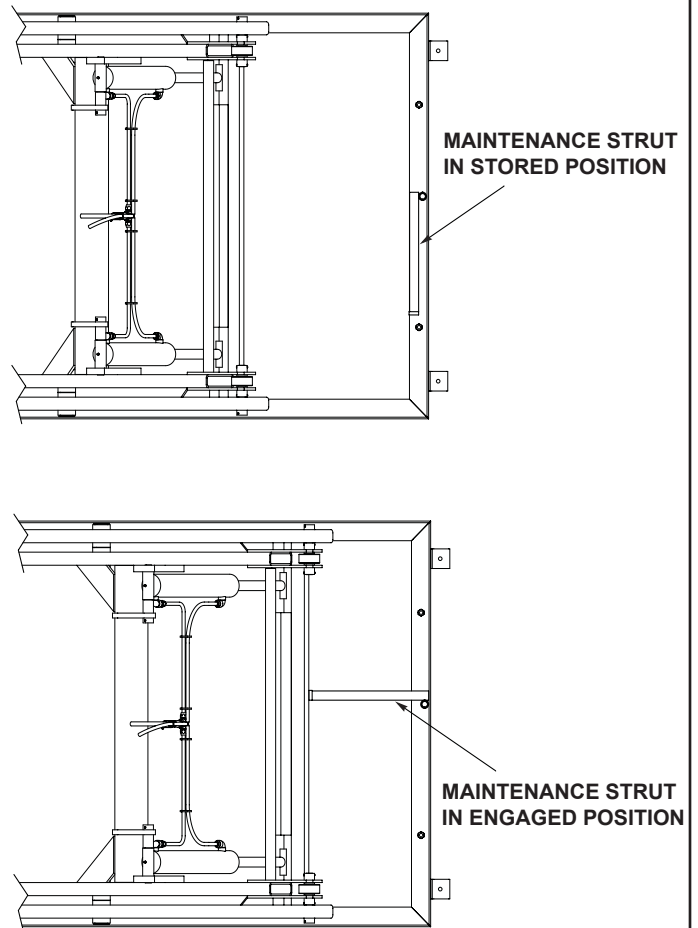


FIGURE 2 - ENGAGE MAINTENANCE STRUT

OWNER RESPONSIBILITY

1. The owner should recognize the inherent danger of the interface between dock and transport vehicle. The owner should, therefore, train and instruct operators in the safe use of dock equipment in accordance with the information provided below. The manufacturer shall publish, provide to the initial purchaser, and make the following information readily available to owners:
 - Installation instructions
 - Recommended initial and periodic inspections procedures
 - Maintenance procedures
 - Operating instructions
 - Descriptions or specifications for replaceable or repairable parts
 - Tables identifying the grade (slope) for all variations of length or configuration of the dock equipment, and
 - Information identifying the maximum uncontrolled drop encountered upon sudden removal of support while within the working range of the equipment.

It shall be the responsibility of the owner to verify that the material listed in this section has been received and that it is made available for the instruction and training of personnel entrusted with the use or maintenance of the dock equipment.
2. When a transport vehicle is parked at a loading dock, it is important that the vehicle is relatively perpendicular to the dock face and in close contact with at least one of the dock bumpers.
3. Nameplates, cautions, instructions, and posted warnings shall not be obscured from the view of operating or maintenance personnel for whom such warnings are intended.
4. Manufacturer's recommended periodic maintenance and inspection procedures in effect at date of shipment shall be followed, and written records of the performance of these procedures should be kept.
5. As with any piece of machinery, dock equipment requires routine maintenance, lubrication, and adjustments. Your local Rite-Hite representative offers owners the option of a Planned Maintenance Program (P.M.P.). As part of this service, your local Rite-Hite representative will do all routine maintenance, lubrication, and adjustments.
6. Dock equipment that is structurally damaged shall be removed from service, inspected by a manufacturer's authorized representative, and repaired as needed before being placed back in service.
7. The manufacturer shall make available replacement nameplates, caution/instruction labels, and operating/maintenance manuals upon request of the owner. The owner shall see that all nameplates, caution/instruction markings or labels are in place and legible, and that the appropriate operating/maintenance manuals are provided to users.
8. Modifications or alterations of dock equipment shall be made only with written permission of the original manufacturer. These changes shall also satisfy all safety recommendations of the original equipment manufacturer for the particular application of the dock equipment.
9. In order to be entitled to the benefits of the standard product warranty, the dock equipment must have been properly installed, maintained and operated within its rated capacities and/or specific design parameters, and not otherwise abused.
10. It is recommended that trailers equipped with air ride suspensions should remove the air from the suspension to minimize trailer bed drop, prior to loading or unloading.
11. When industrial trucks are driven on and off transport vehicles during the loading and unloading operation, the brakes on the transport vehicle shall be applied and wheel chocks or a positive restraining device shall be engaged.
12. In selecting dock equipment, it is important to consider not only present requirements but also future plans or adverse environments.

GENERAL FEATURES

OPERATION/PERFORMANCE

This elevating dock lift is operated by a pushbutton control station. Press and hold the UP button to raise the lift. Press and hold the DOWN button to lower the lift.

STANDARD LIP

This is the extendable portion of the dock lift which provides a bridge from the platform to the bed of the trailer.

PLATFORM

The platform, along with the lip, provides the main bridge between the dock and the trailer bed. The platform is constructed in a four-sided box structure.

HYDRAULICS

The hydraulic system on the dock lift consist of a power unit assembly, hydraulic oil reservoir, and pressure lines to the scissor cylinders.

POWER UNIT

This unit pumps hydraulic fluid to the dock lift cylinders. The power unit consist of an electric motor, gear pump, hydraulic fluid reservoir, and valving.

VELOCITY FUSE

The elevating dock lift is equipped with an emergency support system called a velocity fuse. This valve is placed in the hydraulic feed line for the scissor cylinders. This valve is a normally open, spring loaded check valve. If the return oil overcomes the spring tension, the valve will close, preventing return flow of oil, and stopping the lifts downward movement. The lift will remain in the stopped position.

When an emergency drop occurs, the lift should be inspected thoroughly by a RITE-HITE representative. If nothing has failed, normal operation can be resumed by pressing the lift UP button to reset the velocity fuse.

PENDANT CONTROL STATION - STANDARD

The pendant control that has been sent with the standard unit consists of two pushbuttons. When the UP pushbutton is pressed, the hydraulic power unit is activated which pumps fluid to the lift cylinders and ultimately raises the elevating dock lift. When the DOWN pushbutton is pressed, a solenoid valve is activated and the platform lowers.

WARNING

Read and obey these instructions to prevent personal injury.

- **DO NOT** operate the elevating dock lift until truck/trailer is parked against the dock bumpers and the truck/ trailer has been secured.
- **ALWAYS** secure load when using the dock lift.
- **NEVER** enter a truck/trailer until its brakes are set, air has been dumped from the air ride suspension (if applicable), and you have visually inspected truck/trailer to ensure truck/trailer is securely held in place by a vehicle restraint or wheel chocks per OSHA regulations.
- **NEVER** release the vehicle restraint or remove the wheel chocks until loading/unloading is finished and the truck driver has been given permission to drive away from the dock.

OPERATION INSTRUCTIONS

OPERATING INSTRUCTIONS

1. Push and hold the UP button on the pendant control to raise the dock lift.
2. Lower the lip (bridge plate) onto the vehicle. Ensure the lip is supported by a minimum of 6" on the truck/trailer floor. See figure 3.
3. Loading/unloading can now be completed.
4. Raise and store lip after loading/unloading is complete.
5. Press and hold the DOWN button on the pendant control to lower the dock lift.

NOTES:

- When DOWN button is released the dock lift will stop.
- When dock lift is not in use, it is recommended to store it with the platform fully lowered.

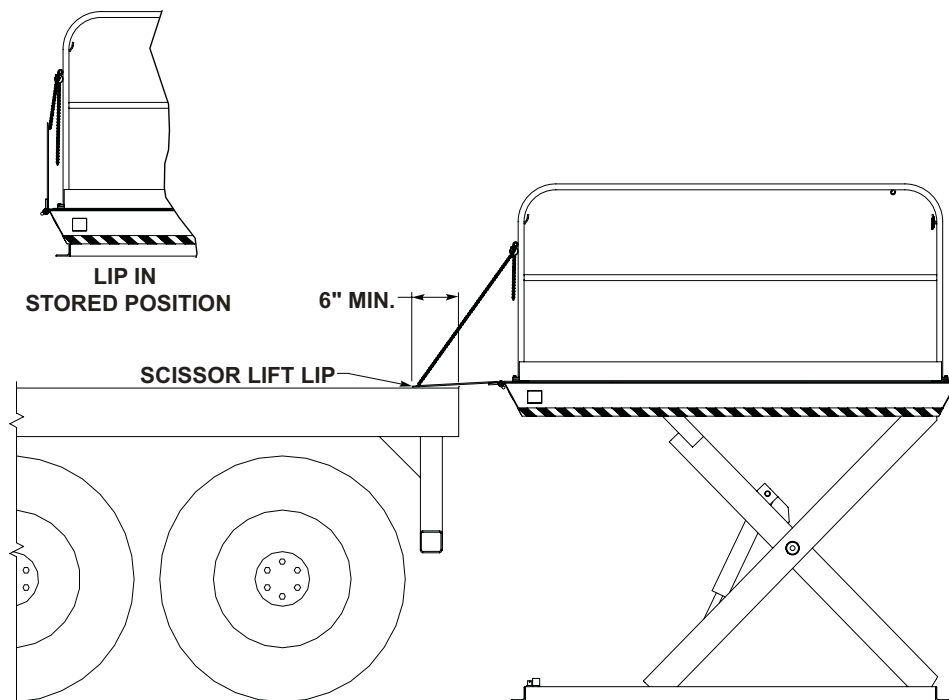


FIGURE 3 - LIP SUPPORT ON TRUCK / TRAILER

MAINTENANCE PROCEDURES

WARNING

- Post safety warnings and barricade work area, at dock level and at ground level, to prevent unauthorized use of the dock position before maintenance has been completed.
- Make sure to engage the maintenance strut before proceeding with any installation or repair work.

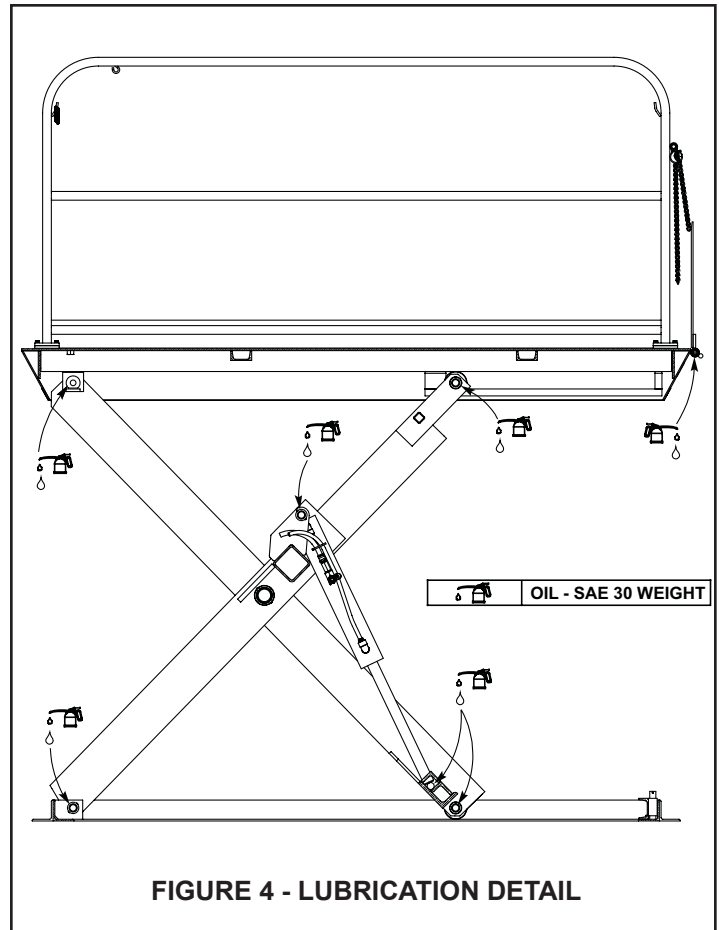
SUGGESTED DOCK LIFT MAINTENANCE

Daily

1. Remove debris on and around dock lift.
2. Check unit for proper operation.

180 Days

1. Perform all Daily Maintenance.
2. Clean pit.
3. Lubricate the dock lift per chart. See figure 4.
4. Check oil level. Add oil if necessary. When adding oil, use MIL-H-5606.
5. Inspect structure and hinge pins for abnormal wear.
6. Inspect all conduit, boxes and electrical connections for damage.
7. Check limit switch adjustment and operation (if equipped).



TROUBLESHOOTING AND ADJUSTMENTS

Symptom	Probable Cause	Remedy
1. Lift table does not lift.	a. Excessive load. b. Fuse and/or overload blown. c. Low oil level and/or oil leak. d. Defective pump. e. Defective valve. f. Filter is clogged.	a. Remove load b. Check fuse and/or reset overload. c. Check oil level. Check for leaks that may have caused low oil level. d. Check system pressure. If pressure is too low, pump may be worn out. Replace if necessary. e. Check valve block. Repair/Replace if necessary. f. Clean or replace suction filter.
2. Lift table does not maintain steady height.	a. Oil Leak. b. Defective check valve. c. Defective solenoid valve.	a. Repair oil leaks. b. Replace check valve. c. Replace solenoid valve.
3. Lift table locked in "UP" position.	a. Velocity fuse locked up due to air. b. Velocity fuse locks up due to valve adjustment. (unit lowering too fast) c. Bent maintenance strut.	a. Cycle unit (5 to 10 times) until velocity fuse no longer locks up. b. See Flow Control Adjustments. c. Replace maintenance strut.

FLOW CONTROL ADJUSTMENT

This adjustment to be performed by a qualified technician only. Refer to figure 5.

For adjustment, first unlock the outside locknut.

(Adjustments should be made in 1/4 turn increments)

- To decrease platform fall speed turn adjustment screw clockwise.
- To increase platform fall speed turn adjustment screw counterclockwise.

NOTE: When making adjustments in extremely cold temperatures (below freezing), run unit several times to confirm that the velocity fuse doesn't lock-up with warmer oil.

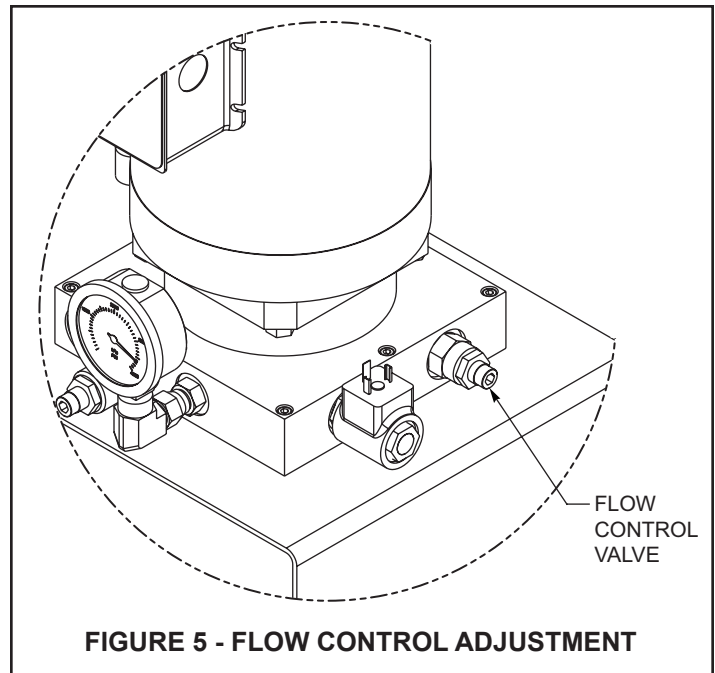
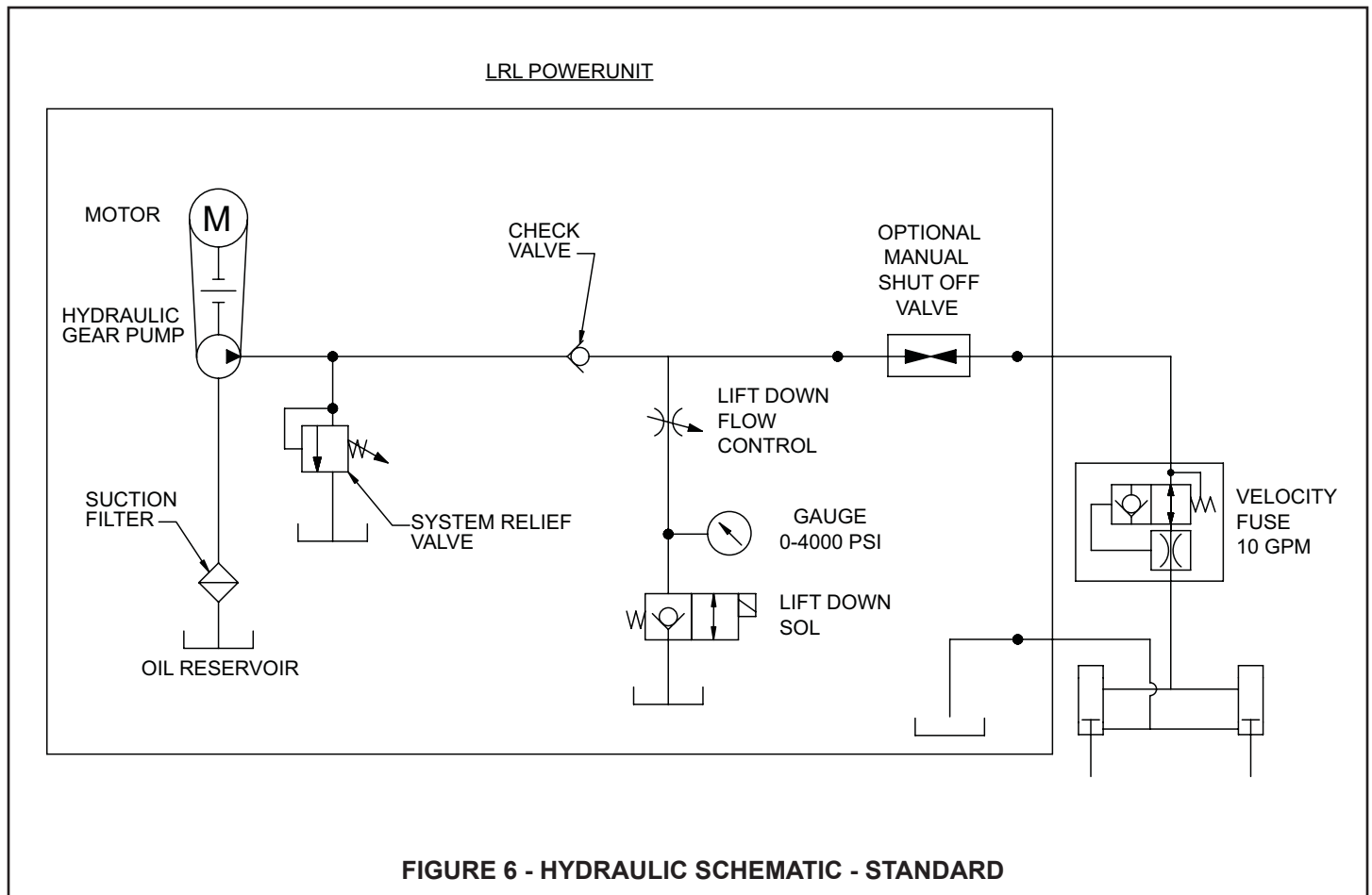


FIGURE 5 - FLOW CONTROL ADJUSTMENT

HYDRAULIC SCHEMATIC



ELECTRICAL SCHEMATICS

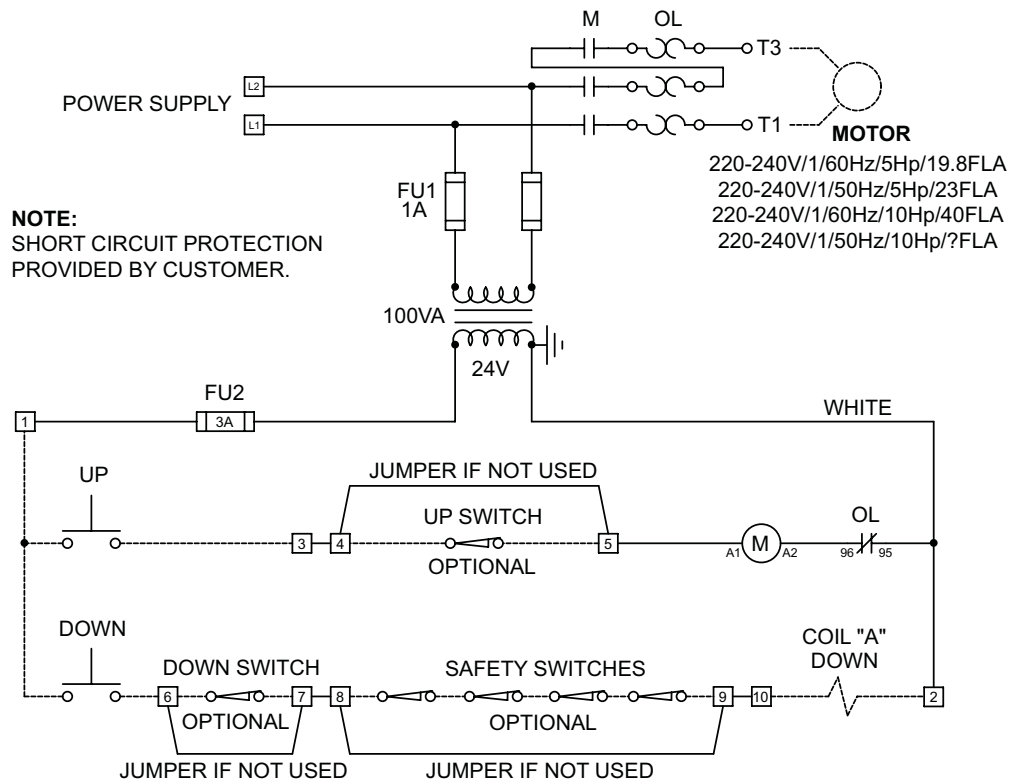


FIGURE 7 - ELECTRICAL SCHEMATIC - SINGLE PHASE

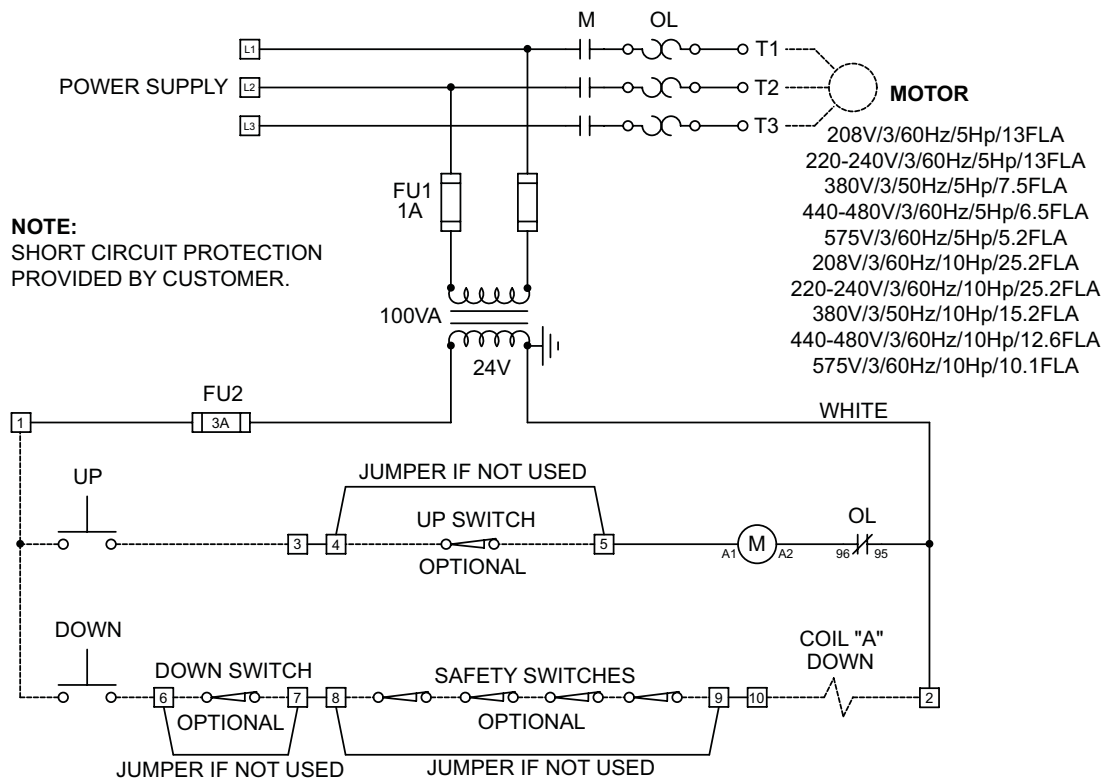


FIGURE 8 - ELECTRICAL SCHEMATIC - THREE PHASE

ELECTRICAL SCHEMATICS - CONT.

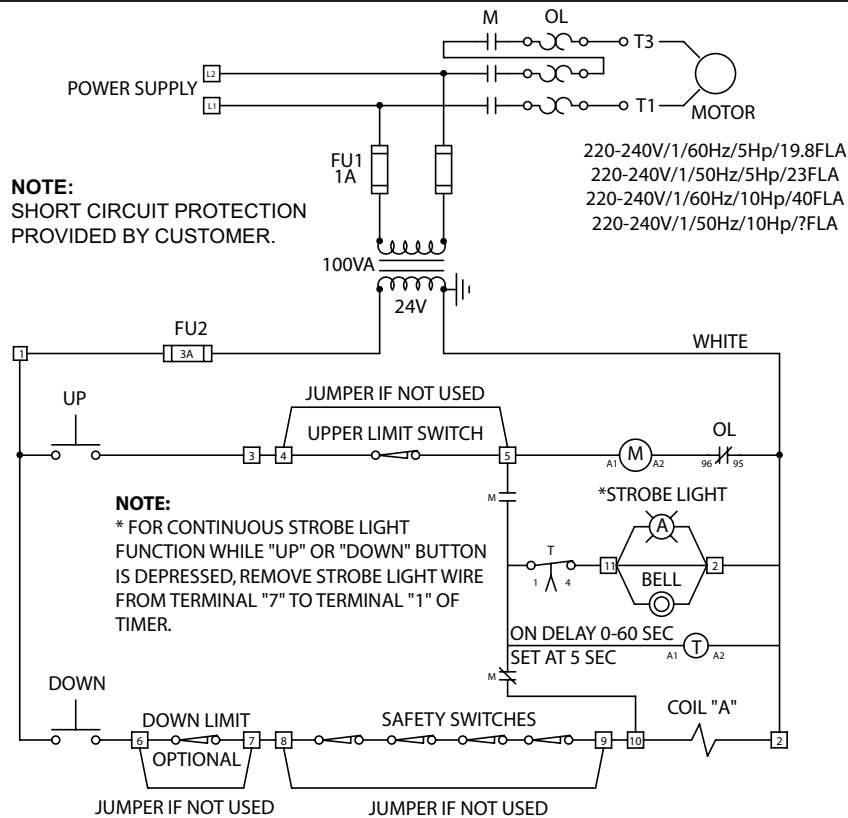


FIGURE 9 - ELECTRICAL SCHEMATIC - SINGLE PHASE - OPTIONAL

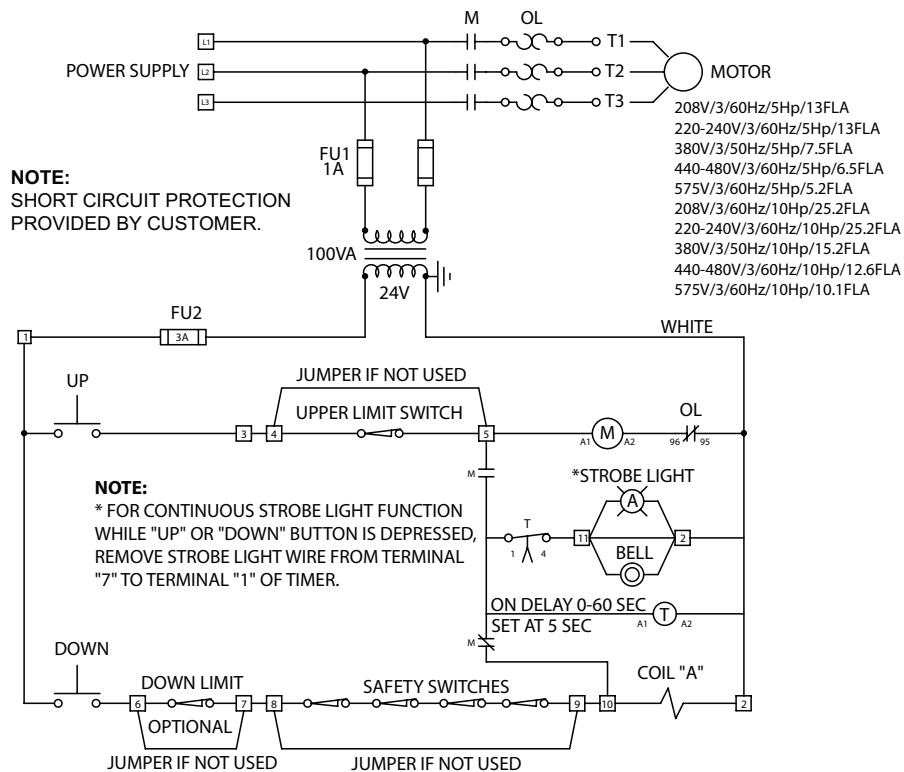
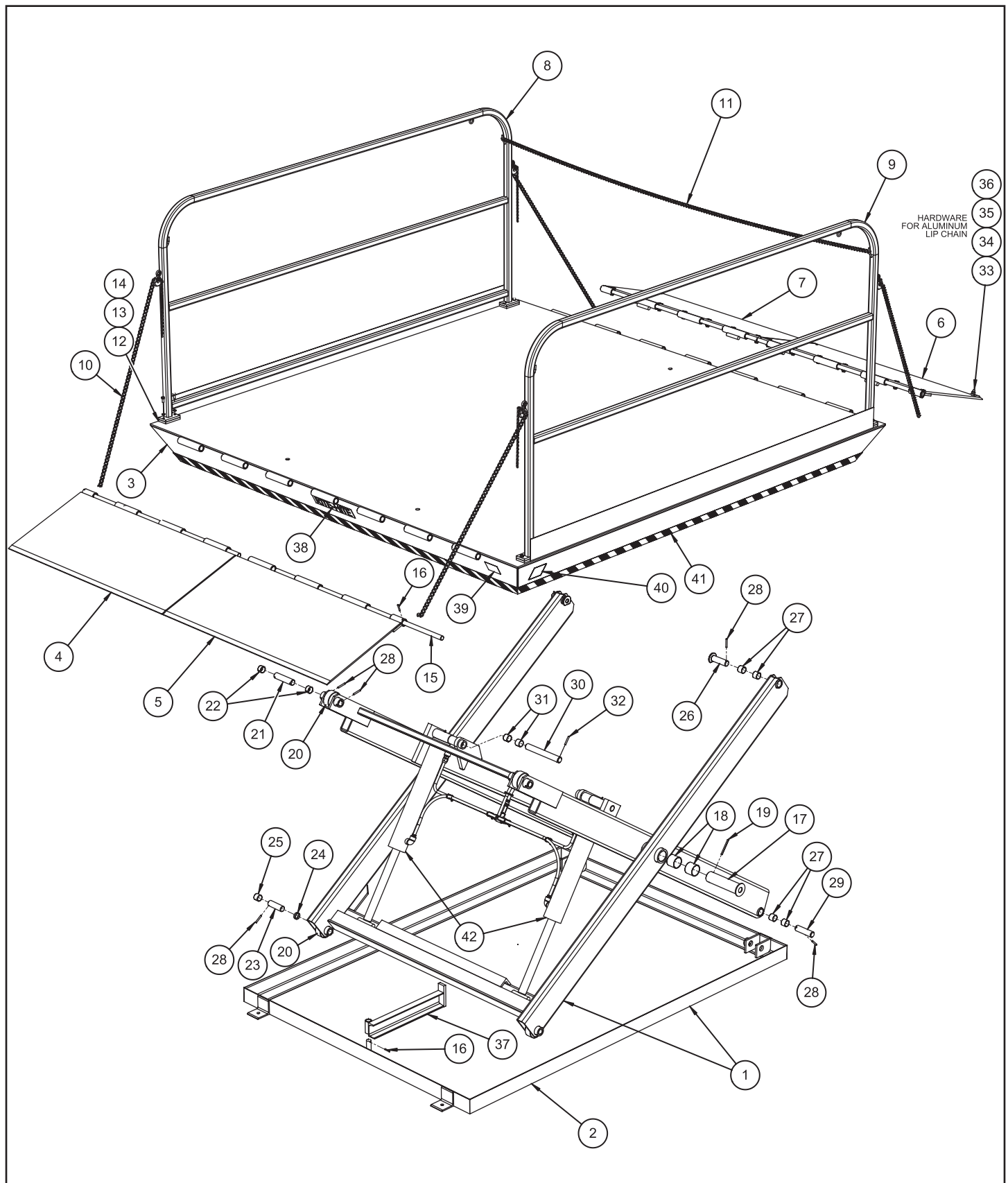


FIGURE 10 - ELECTRICAL SCHEMATIC - THREE PHASE - OPTIONAL

NOTES

REPLACEMENT PARTS



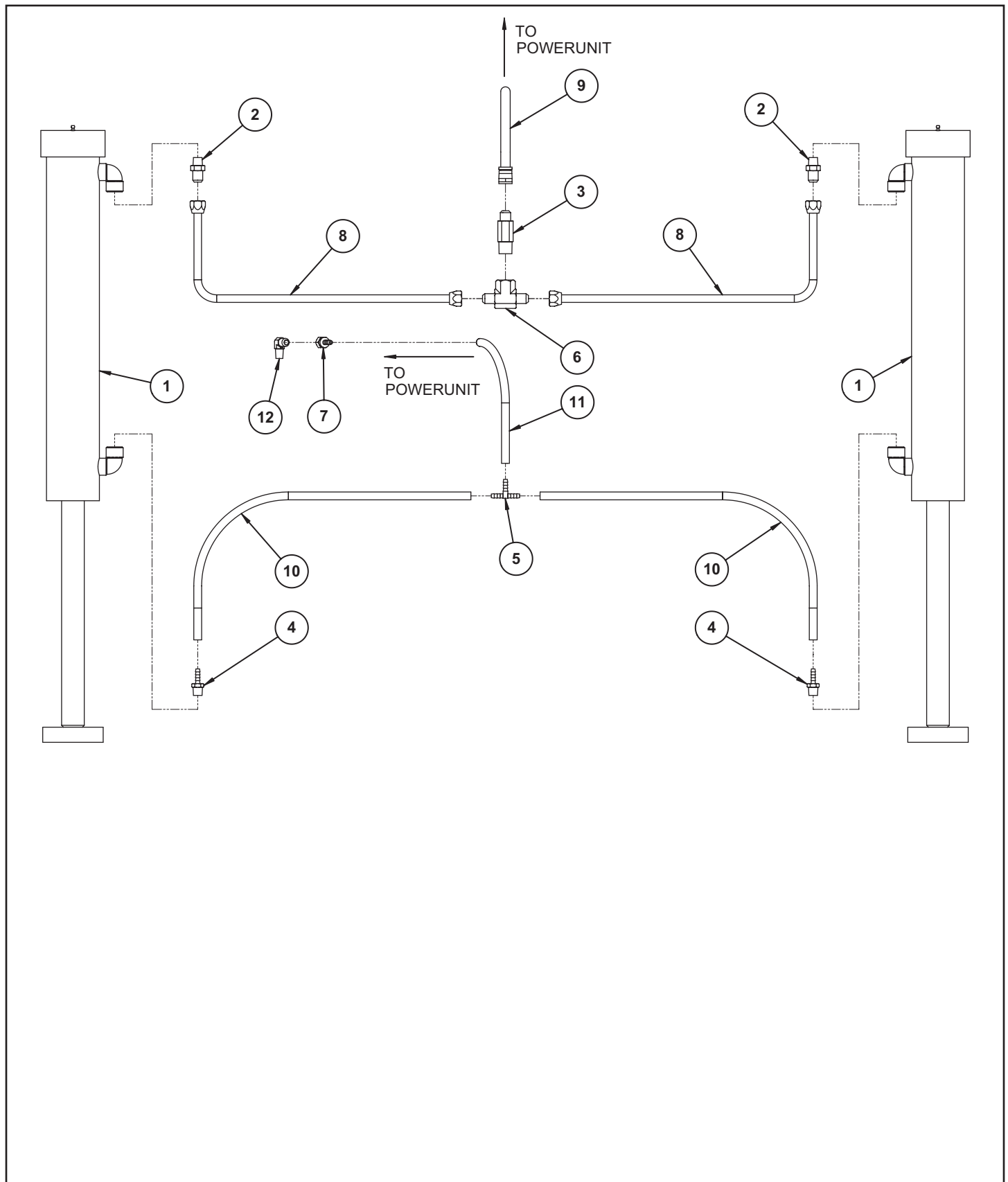
REPLACEMENT PARTS LIST

Item	Qty	Description	Unit Capacity / Part Number			
			5K	6K	8K	10K
1	1	Base	120871	120873	120872	120874
2	1	Base Frame	120835	120835	120834	120834
3	1	Platform	**	**	**	**
4	1	Steel Lip - Left Hand	**	**	**	**
5	1	Steel Lip - Right Hand	**	**	**	**
6	1	Aluminum Lip - Left Hand	**	**	**	**
7	1	Aluminum Lip - Right Hand	**	**	**	**
8	1	Rail - Left Hand	**	**	**	**
9	1	Rail - Right Hand	**	**	**	**
10	*	Lip Chain	120914	120914	120914	120914
11	1	Safety Chain	**	**	**	**
12	4	Rail Pad	127519	127519	127519	127519
13	8	Rail Mounting Washer	51803	51803	51803	51803
14	8	Rail Mounting Bolt	51670	51670	51670	51670
15	*	Lip Hinge Pin	**	**	**	**
16	*	Tension Pin	16070	16070	16070	16070
17	2	Main Axle Clevis Pin	120998	120998	120894	120894
18	4	Main Axle Bearing	120947	120947	120948	120948
19	2	Tension Pin	120818	120818	120818	120818
20	4	Roller	120816	120816	120978	120978
21	2	Upper Roller Clevis Pin	120827	120827	120901	120901
22	4	Upper Roller Bearing	120944	120944	120945	120945
23	2	Lower Roller Clevis Pin	120817	120817	120876	120876
24	2	Lower Roller Bearing	120943	120943	120945	120945
25	2	Lower Roller Bearing	120945	120945	120945	120945
26	2	Upper Hinge Clevis Pin	120941	120941	120902	120902
27	4	Upper Hinge Bearing	120945	120945	120945	120945
28	10	Tension Pin	68149	68149	68149	68149
29	2	Lower Hinge Clevis Pin	120833	120833	120832	120832
30	2	Hydraulic Cylinder Clevis Pin	120830	120830	120913	120913
31	4	Hydraulic Cylinder Bearing	120945	120945	120946	120946
32	2	Tension Pin	68149	68149	52814	52814
33	2	Aluminum Lip Chain Screw	120867	120867	120867	120867
34	2	Aluminum Lip Chain Nut	51501	51501	51501	51501
35	2	Aluminum Lip Chain Washer	51700	51700	51700	51700
36	2	Aluminum Lip Chain S-Hook	51102	51102	51102	51102
37	1	Maintenance Strut	120940	120940	120940	120940
38	1	Decal RITE-HITE	54100	54100	54100	54100
39	1	Decal Made In USA	120750	120750	120750	120750
40	2	Decal Serial Number/Model	120569	120569	120569	120569
41	*	Safety Yellow Tape	120991	120991	120991	120991
42	2	Hydraulic Cylinder	120951	120951	120950	120950

* Quantities Vary

** Consult Factory

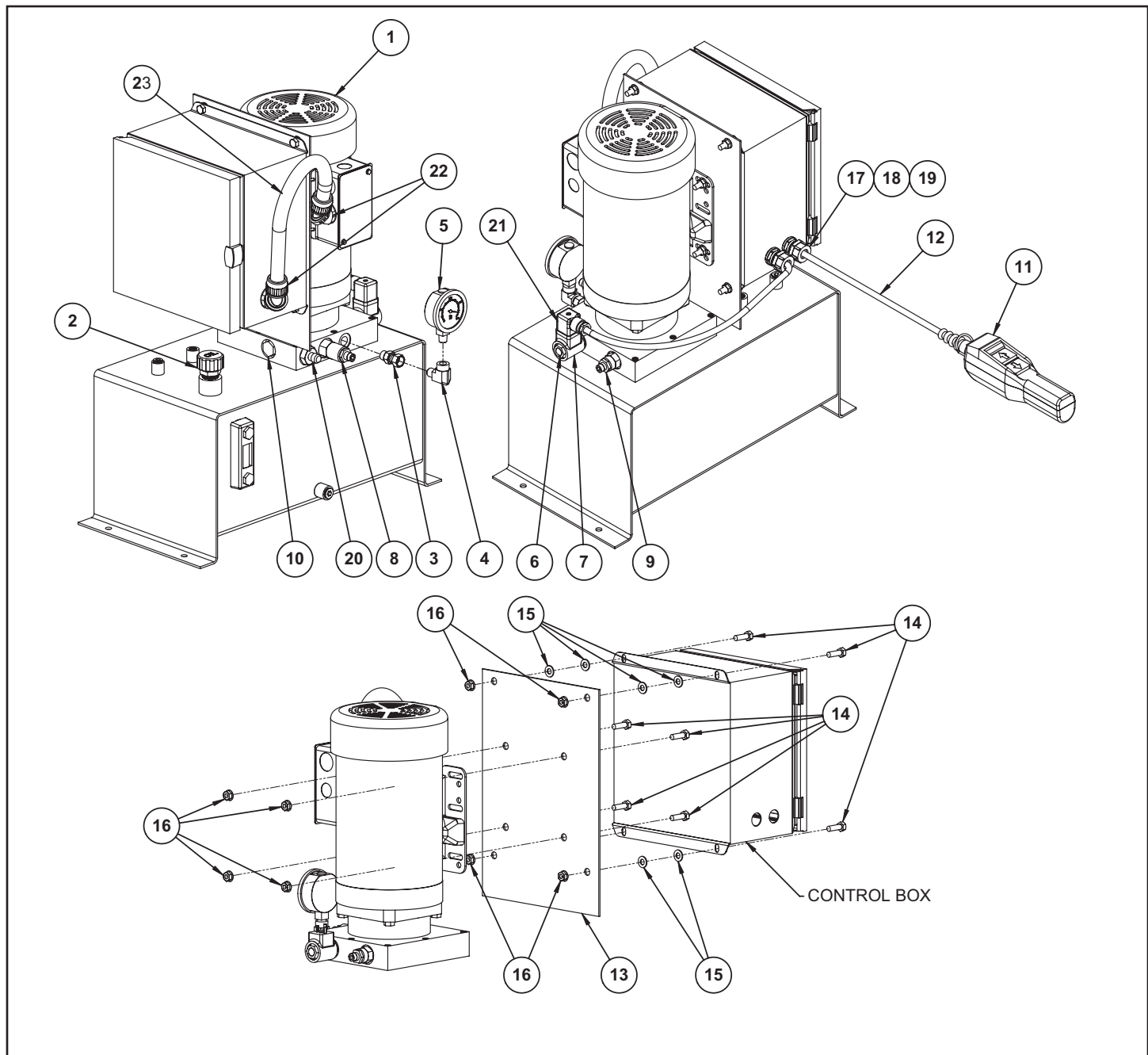
HYDRAULIC REPLACEMENT PARTS



HYDRAULIC PARTS LIST

Item	Qty	Description	Unit Capacity / Part Number			
			5K	6K	8K	10K
1	2	Hydraulic Cylinder	120951	120951	120950	120950
2	2	Straight Fitting 6NPT 8MJ	128155	128155	128155	128155
3	1	Velocity Fuse 10 Gpm .5NPT 8MJ	127879	127879	127879	127879
4	2	Straight Fitting .38NPT .25 Barb	128179	128179	128179	128179
5	1	Tee Fitting .25 Barb Plastic	128180	128180	128180	128180
6	1	Tee Fitting 8FNPT 6MJ 6MJ	128156	128156	128156	128156
7	1	Straight Fitting 6FJS .25 Barb	18902	18902	18902	18902
8	2	Hydraulic Elbow Tube 90 .5OD 8FJS 17L	128158	128158	128157	128157
9	1	Hose Assy. .38ID 8FJS 6FJS 300L	128159	128159	128159	128159
10	2	Return Hose .25ID 30L	128169	128169	128169	128169
11	1	Return Hose .25ID 300L	128170	128170	128170	128170
12	1	Elbow Fitting 90 .25NPT 6MJ ZP	55149	55149	55149	55149

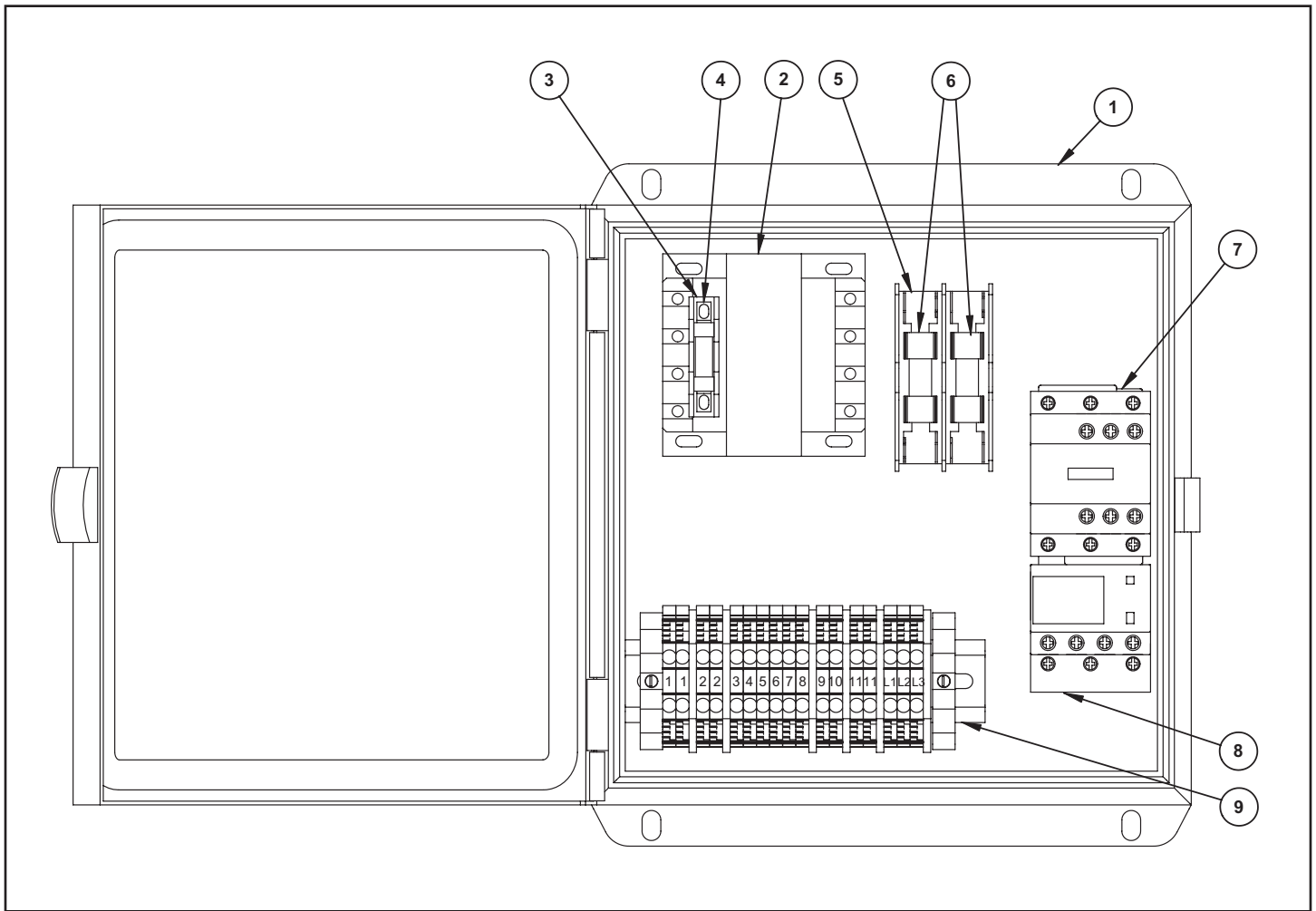
POWER UNIT REPLACEMENT PARTS



5HP POWER UNIT PARTS LIST

Item	Qty	Description	Part Number
1	1	PU LRL 220-240/1/60HZ 5HP	128141
1	1	PU LRL 220-240/1/50HZ 5HP	128142
1	1	PU LRL 208-230/440-480/3/60HZ 380/3/50HZ 5HP	128143
1	1	PU LRL 575/3/60HZ 5HP	128144
2	1	Breather Vent	128388
3	1	Straight Fitting 6MORB 6FJS	55270
4	1	Elbow Fitting 90 4FNPT 6MJ	120912
5	1	Pressure Gauge	128392
6	1	Spool Valve 2W NC	128387
7	1	Solenoid Coil 24VAC	128386
8	1	Relief Valve	128389
9	1	Needle Valve Adjustable	128390
10	1	Check Valve 4PSI	128391
11	1	Standard Controller	128128
	1	Optional Controller w/ Key Switch	128129
12	1	Controller Cord 300L	128214
13	1	Control Box Mounting Plate	128241
14	8	Control Box Mounting Screw	51627
15	8	Control Box Mounting Washer	100362
16	8	Control Box Mounting Nut	51535
17	1	Cord Grip	65621
18	1	Sealing Washer Gasket	55524
19	1	Locknut	57701
20	1	Straight Fitting 8MORB 6MJ	117516
21	1	Harness 16/4 13L CONN(HIRSCH) GRIP	128240
22	2	Elbow Fitting Conduit(NMET) .5IN Swivel Nylon	128393
23	1	Conduit .5IN FLEX NMET 15L	128394

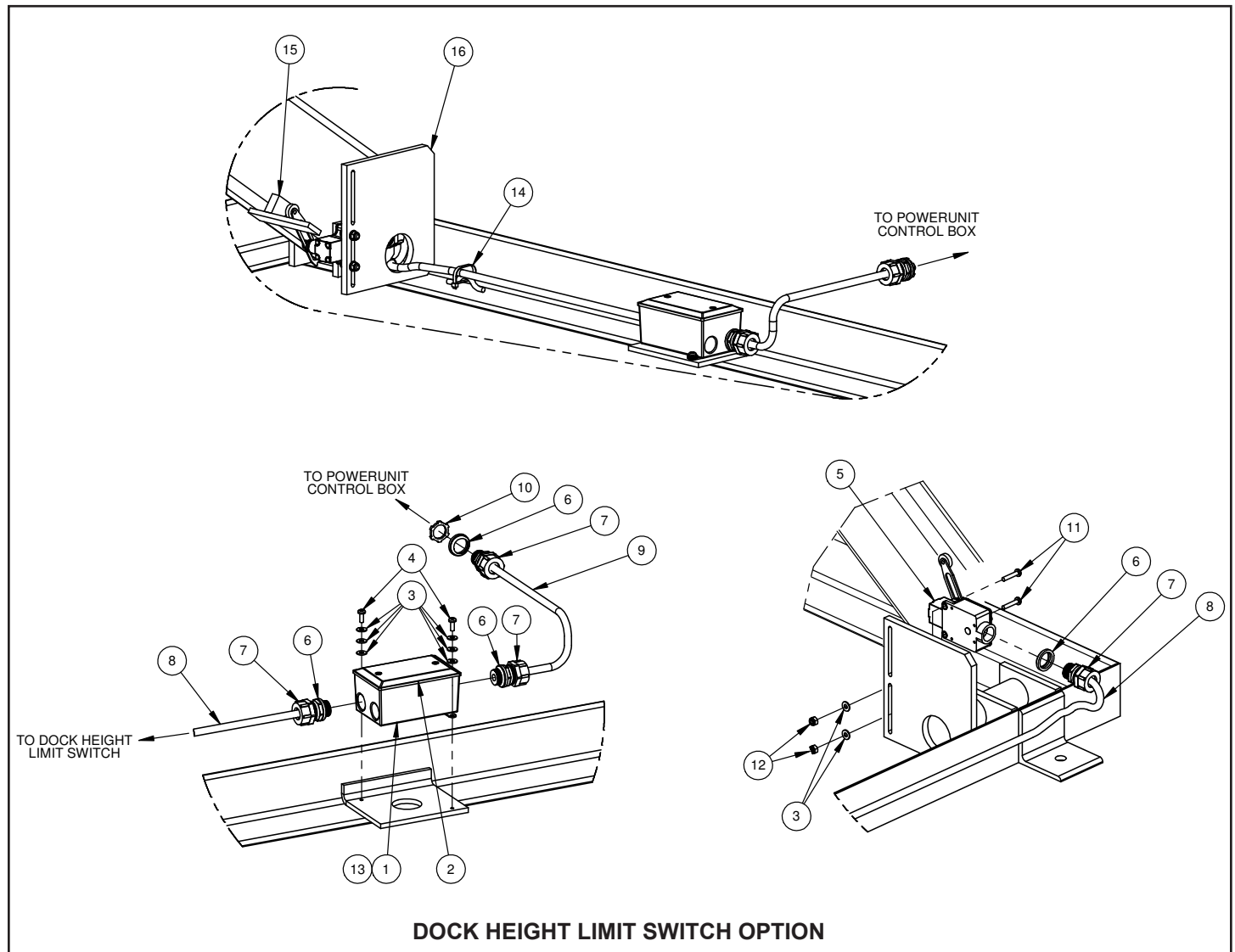
CONTROL BOX REPLACEMENT PARTS



CONTROL BOX PARTS LIST

Item	Qty	Description	5HP Control Box						
			128224	128226	128227	128228	128229	128230	128231
			208/3/ 60Hz	220-204/ 1/60Hz	220-240/ 1/50Hz	220-240/ 3/60Hz	380/3/ 50Hz	440-480/ 3/60Hz	575/3/ 3/60Hz
1	1	Enclosure 10 X 10 X 6 N4	128433	128433	128433	128433	128433	128433	128433
2	1	Transformer	128439	128429	128429	128428	128430	128428	128431
3	1	Fuse Block (Glass) 1Pole	128422	128422	128422	128422	128422	128422	128422
4	2	Fuse - Glass 3 AMP	55784	55784	55784	55784	55784	55784	55784
5	1	Fuse Block (CL CC) 2Pole	128421	128421	128421	128421	128421	128421	128421
6	2	Fuse 1A 600V CC REJ TD	66003	66003	66003	66003	66003	66003	66003
7	1	Contactor	128410	128412	128412	128410	128409	128409	128409
8	1	Overload Relay	128417	128419	128417	128417	128419	128415	128415
9	1	Terminal Block Assembly	128432	128432	128432	128432	128432	128432	128432

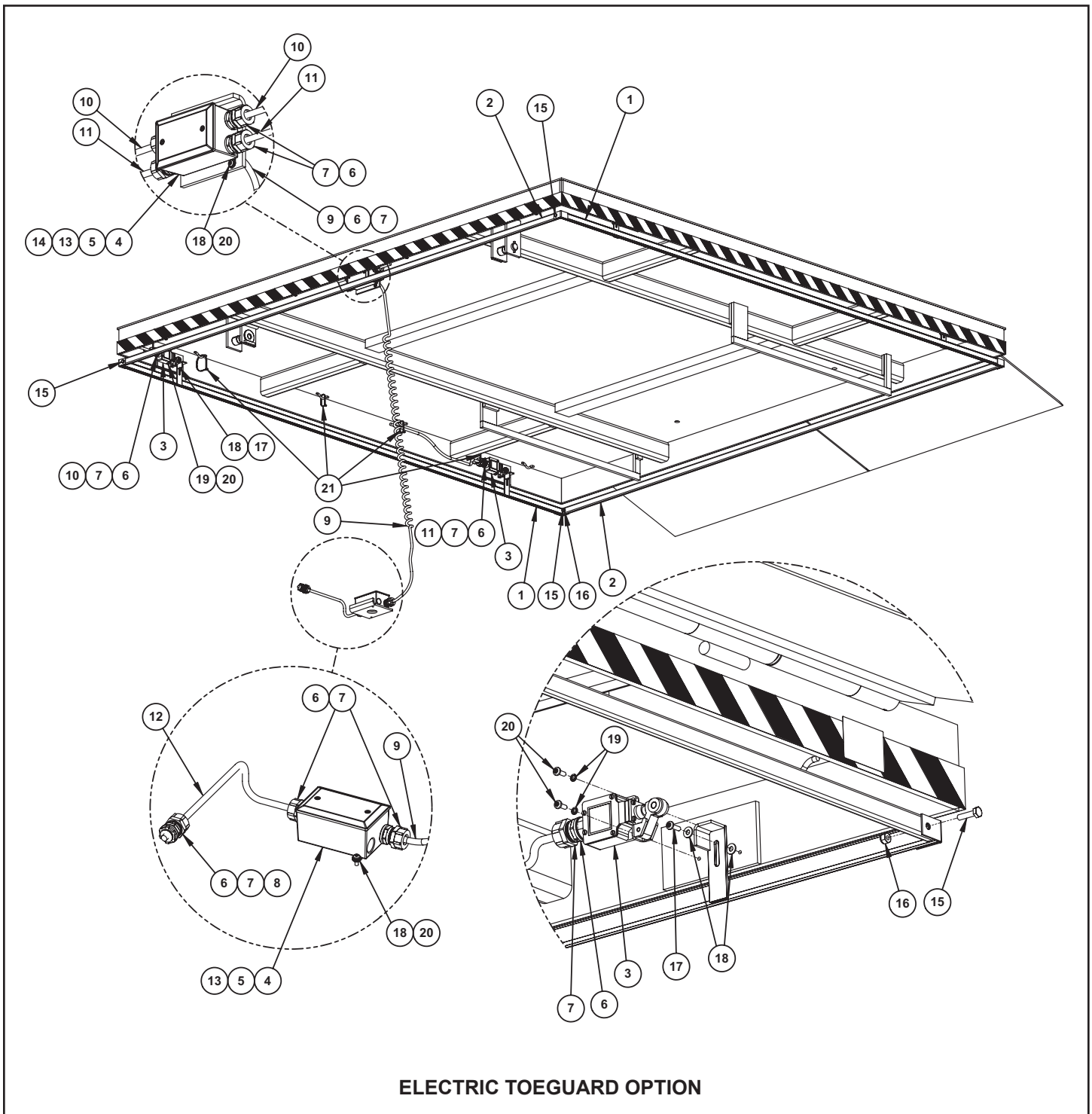
OPTIONAL REPLACEMENT PARTS



DOCK HEIGHT LIMIT SWITCH OPTION PARTS LIST

Item	Qty	Description	Part Number
1	1	Junction Box	128210
2	1	Junction Box Cover	103317
3	8	Mounting Washer	51733
4	2	Junction Box Mounting Screw	120911
5	1	Limit Switch	141285
6	4	Sealing Washer	55524
7	4	Cord Grip	65621
8	1	Limit Switch Cable 16/4 SJOOW 24L	128220
9	1	Powerunit Cable 16/4 SJOOW 300L	128214
10	1	Locknut	57701
11	2	Limit Switch Mounting Screw	125958
12	2	Limit Switch Mounting Nut	58803
13	3	Orange Wire Nut	55710
14	1	Wire Ties	55892
15	1	Limit Switch Trigger	128425
16	1	Limit Switch Mounting Plate	128426

OPTIONAL REPLACEMENT PARTS



ELECTRIC TOEGUARD OPTION PARTS LIST

Item	Qty	Description	Unit Size - Length and Width					
			96L 72W	120L 72W	96L 84W	120L 84W	96L 96W	120L 96W
1	2	Electric Toeguard Tube Weldment	128203	128204	128203	128204	128203	128204
2	2	Electric Toeguard Tube	128199	128199	128200	128200	128201	128201
3	4	Limit Switch	128186	128186	128186	128186	128186	128186
4	2	Junction Box	128210	128210	128210	128210	128210	128210
5	2	Junction Box Cover	103317	103317	103317	103317	103317	103317
6	12	Sealing Washer	55524	55524	55524	55524	55524	55524
7	12	Cord Grip	65621	65621	65621	65621	65621	65621
8	1	Locknut	57701	57701	57701	57701	57701	57701
9	1	Coil Cord	128185	128185	128185	128185	128185	128185
10	2	Limit Switch Cable 16/4 SJOOW 60L	128211	128211	128211	128211	128211	128211
11	2	Limit Switch Cable 16/4 SJOOW	128212	128213	128212	128213	128212	128213
12	1	Powerunit Cable 16/4 SJOOW 300L	128214	128214	128214	128214	128214	128214
13	10	Orange Wire Nut	55710	55710	55710	55710	55710	55710
14	1	Red Wire Nut	55530	55530	55530	55530	55530	55530
15	4	Toeguard Assembly Screw	58077	58077	58077	58077	58077	58077
16	4	Toeguard Assembly Nut	51595	51595	51595	51595	51595	51595
17	4	Toeguard Track Mounting Screw	109228	109228	109228	109228	109228	109228
18	16	Toeguard Track/J-Box Mounting Washer	51733	51733	51733	51733	51733	51733
19	8	Limit Switch Mounting Washer	51770	51770	51770	51770	51770	51770
20	12	Limit Switch/J-Box Mounting Screw	120911	120911	120911	120911	120911	120911
21	20	Wire Ties	55892	55892	55892	55892	55892	55892

RITE-HITE STANDARD WARRANTY

Rite-Hite warrants that its products will be free from defects in design, materials, and workmanship for a period of 365 days from the date of shipment. All claims for breach of this warranty must be made within 30 days after the defect is or can, with reasonable care, be detected and in no event no more than 30 days after the warranty has expired. In order to be entitled to the benefits of this warranty, the products must have been properly installed, maintained, and operated within their rated capacities and/or specified design parameters, and not otherwise abused. Periodic lubrication and adjustment is the sole responsibility of the owner. This warranty is Rite-Hite's exclusive warranty. Rite-Hite expressly disclaims all implied warranties, including the implied warranties of merchantability and fitness. Non-standard warranties, if any, must be specified by Rite-Hite in writing.

In the event of any defects covered by this warranty, Rite-Hite will remedy such defects by repairing or replacing any defective equipment or parts, bearing all the costs for parts, labor, and transportation. This shall be the exclusive remedy for all claims whether based on contract, negligence, or strict liability.

LIMITATION OF LIABILITY

RITE-HITE SHALL NOT IN ANY EVENT BE LIABLE FOR ANY LOSS OF USE OF ANY EQUIPMENT OR INCIDENTAL OR CONSEQUENTIAL DAMAGES OF ANY KIND, WHETHER FOR BREACH OF WARRANTY, NEGLIGENCE, OR STRICT LIABILITY.



Global Sales & Service Office:

RITE-HITE

8900 N. Arbon Drive

P.O. Box 245020

Milwaukee, Wisconsin 53224

Phone: 414-355-2600

1-800-456-0600

www.ritehite.com

Representatives in all Major Cities