

Complete Dock Sealing Guide

Achieve maximum environmental control at the loading dock on all four sides of the opening, both inside and outside.

Air gaps at the loading dock are bad news for your business.

Poor sealing leads to...

Quality inspection concerns

Energy loss

Contamination concerns

Diminished employee comfort

Product damage

Safety hazards

Sources of Sealing Challenges

Wide variety of trailer sizes, especially variability in height



Different trailer configurations



The Rite-Hite Approach What we do for you:

1

Analyze your
current condition

2

Apply the appropriate
combination of products to
produce the best seal possible
on all four sides of the opening, ►
both inside and outside

3

Deliver an effective
solution that protects
your bottom line

Seal Trailer Tops and Sides

Dock Shelter Applications



Before

Gaps at top and corners of head curtain



After

Eclipse header seals the gaps, blocks the light



Before

Exposed trailer door hinge gaps



After

Hinge gaps sealed with GapMaster hooks

Eclipse® weighted header and side curtains work together to create a complete seal across trailer top and upper corners.



GapMaster® sealing hooks seal trailer door hinge gaps.

Left unsealed, hinge gaps amount to a 2.5 sq. ft. hole in the wall.

Dock Seal Applications



Trailer protrusions

High Performance dock seal headers seal gaps from trailer protrusions.



Gaps from trailer protrusions in dock seal header



High Performance header seals the gaps, blocks the light



Existing Seals or Shelters

RainGuard® weighted trailer top seal fits over existing dock seal or shelter to protect against rain, dust, wind and other harmful elements.

Seal the 4th Side: At dock levelers and bumpers

Outside



Open dock leveler pits invite the infiltration of bugs, dust, pests and debris

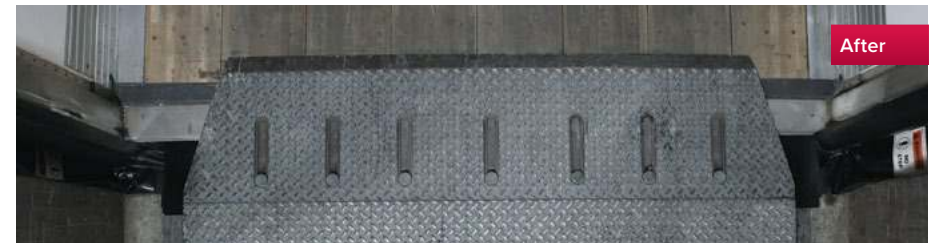


PitMaster® X Under-leveler Seal encloses open dock pits

Inside



Open gaps at dock leveler corners allow unwanted elements to enter and expensive energy to escape



Lip Corner Seals block the light and seal the gaps

Vertical Leveler Application



Open gaps between the dock face and trailer allow contamination, infiltration, and increased energy costs



With the VHLS dock sealing system, gaps are sealed for effective environmental control on the dock



Gaps around bumpers



Filler pad with bumper cover



Gaps at raised bumpers



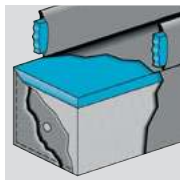
BumperTopper™ seals

Small gaps add up

Inside your dock, anywhere you see daylight there's a gap to be filled, and a product to fill it.

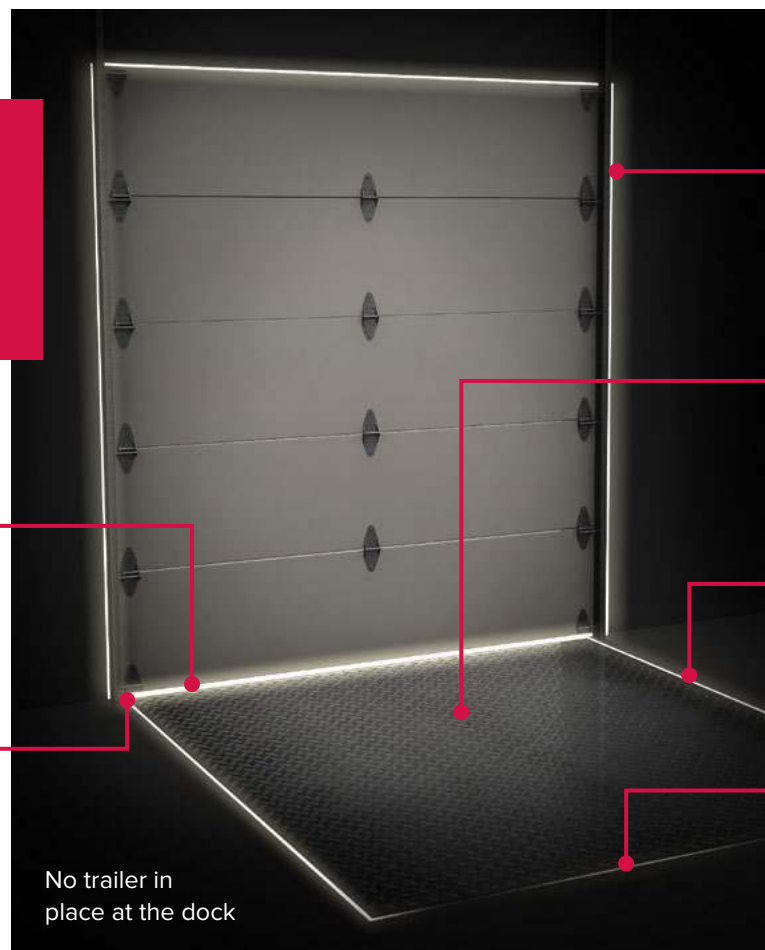
Gap-Sealr™

Seals uneven surfaces between leveler and sectional door



Wedg-It™

Fills the gap between leveler, dock pit wall and bottom edge of sectional door

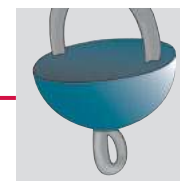


No trailer in place at the dock



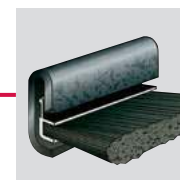
Rite-Seal™

Seals door gaps when trailer is not present at the dock



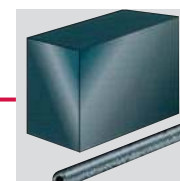
Lanyard Cup Weather Seal

Stops air penetration through leveler lanyard cups



Leveler Weather Seal

Seals gaps along sides of leveler



Rear Hinge Seal

Seals gaps at back of leveler plate

What are your gaps **costing** you?



Hinge gaps

\$600 – \$1,200

annually per dock position



Top and corner gaps

\$200 – \$400

annually per dock position



Beneath and around
dock leveler

\$300 – \$900

annually per dock position



Leveler and door gaps

\$500 – \$1,000

annually per dock position

TOTAL

\$1,600 – \$3,500

annually per dock position

Energy Loss and Savings Analysis

RITEHITE
ALWAYS LOOKING AHEAD

Dock Seal and Shelter
Energy Loss & Savings Analysis

Client Information

Prepared for:
ABC Company
John Smith
Location: Receiving

Nearest city with climate information:
Milwaukee, Wisconsin, United States

Dock Environment

Current Air Gap
Dock Door Width: 9.0 feet
Dock Door Height: 10.0 feet
Trailer Width: 8.5 feet
Trailer Height: 13.5 feet
Bumper Protection: 4.0 inches
Hinged Doors on Trailer: Yes
Free Area: 15.2 sq. feet

Heating Conditions
Fuel type: Natural Gas
Inside Temperature: 65 °F
Hours dock door is open per working day: 8.0 hours
Number of work days per week: 5.0 days
Fuel Cost: 0.72 \$ / therm

Cooling Conditions
Type of cooling: Air Conditioning
Inside Temperature: 75 °F
Hours dock door is open per working day: 8.0 hours
Number of work days per week: 5.0 days
Cost of Electricity: 0.08 \$ / kW-hr

Annual Savings Potential Per Dock Position

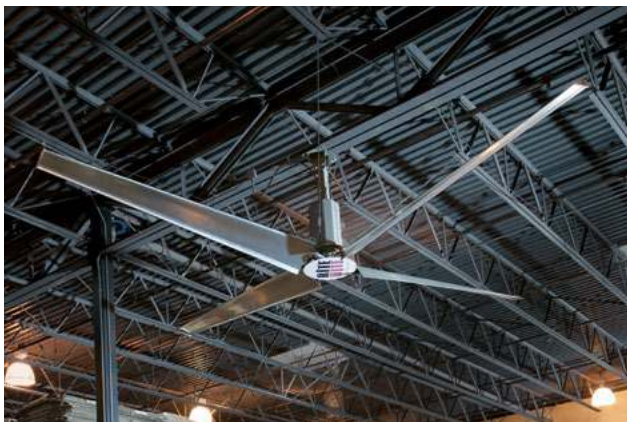
Existing Systems	Heating Losses	Cooling Losses	Total Losses
Shelter with open hinge gaps No Under-leveler Seal	\$1,923	\$104	\$2,027

Recommended Solutions	Heating Losses	Cooling Losses	Total Losses	Annual Savings Potential Per Dock Position
Eclipse Dock Shelter with Pitmaster	\$136	\$6	\$142	\$1,885
Eclipse Dock Shelter without Pitmaster	\$824	\$24	\$848	\$1,179
GapMaster Dock Shelter without Pitmaster	\$1,103	\$45	\$1,147	\$880

Savings calculations are relative to the existing enclosures and seals.

Your Rite-Hite Representative can conduct free Energy Loss and Savings Analyses, demonstrating savings potential at the loading dock and throughout your facility.

More Energy Saving and Environmental Control Solutions



Zoneworks® Curtain Walls

Flexible fabric systems are customizable to virtually any situation. Ideal for temperature separation, humidity control, odor or dust containment, sound attenuation, and many other applications.

Rite-Hite® HVLS Fans

Offer a year-round fundamental change in building environments, keeping people cooler in summer and warmer in winter. High volume low speed fans can also help reduce energy consumption and costs.

FasTrax® High Speed Doors

Can match virtually any interior, exterior, high-wind, clean, cooler or freezer high-cycle application. Reduce the complexity of maintaining multiple door models in one facility.

RITEHITE
ALWAYS LOOKING AHEAD

R19CSB0324AMEH2

Milwaukee, Wisconsin USA

www.ritehite.com

P 414-355-2600 (800-456-0600)

F 414-355-9248

Rite-Hite®, Eclipse®, RainGuard®, Zoneworks®, GapMaster®, Performer®, PitMaster®, BumperTopper™, Gap-Sealr™, Wedg-It™, Rite-Seal™, and FasTrax® are trademarks of Rite-Hite Holding Corporation. Rite-Hite products are covered by one or more U.S. patents with other U.S. and foreign patents pending. Patent coverage: www.ritehite.com/patents. The information herein is provided as a general reference only regarding the use of the applicable products. The specifications stated here are subject to change. Manufactured by: Rite-Hite Environmental Enclosure Corporation.