

NEXT ASSEMBLY

## FASTENING METHODS

## CONCRETE BLOCK OR BRICK WALL:

THROUGH BOLT FASTENING IS REQUIRED. BORE A HOLE THROUGH THE BUILDING WALL. USE A 3/8" DIAMETER THREADED ROD WITH A WASHER, NUT AND JAM NUT ON EACH END - IT MAY BE NECESSARY TO INSTALL A BACK-UP PLATE INSIDE THE BUILDING WALL WHEN THE WALL WILL NOT SUPPORT THE BOLT.

## CONCRETE TILT-UP WALLS (PRECAST):

USE A 3/8" LAG BOLT WITH EXPANSION SHIELDS, 3/8" ONE PIECE ANCHOR BOLT WITH EXPANSION COLLAR, OR EQUIVALENT FASTENER.

IF BUILDING WALL IS TOO THIN TO EFFECTIVELY HOLD THE LAG BOLT OR ANCHOR BOLT, THROUGH BOLT METHOD OF ATTACHMENT IS REQUIRED.

\*SEE ANCHOR MANUFACTURER'S RECOMMENDATION FOR MINIMUM ANCHOR EMBEDMENT TO DETERMINE APPROPRIATE ANCHOR LENGTH.

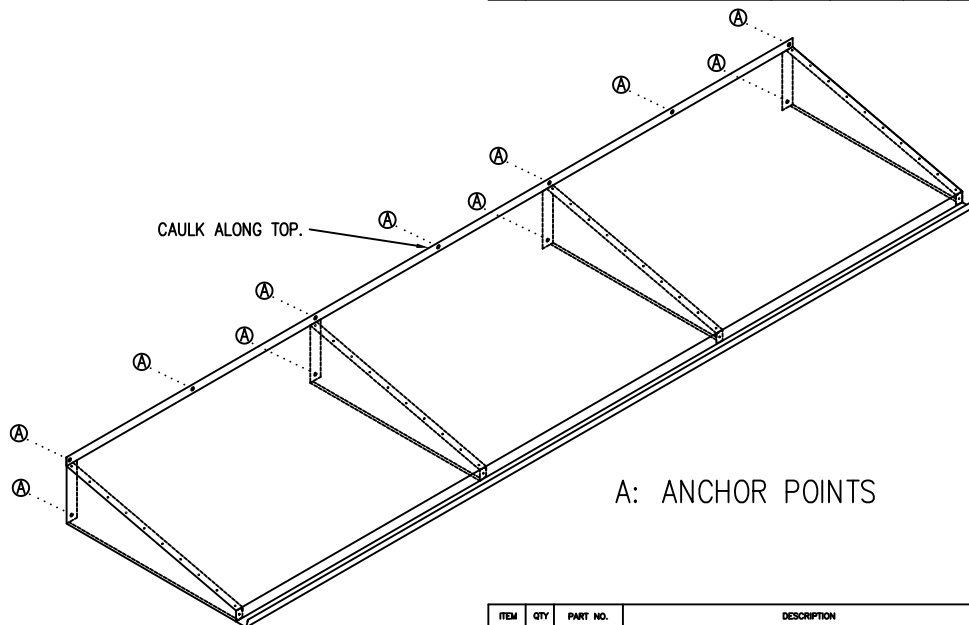
## METAL SIDE BUILDING:

THROUGH BOLT METHOD OF ATTACHMENT IS REQUIRED FOR THIS BUILDING TYPE. IT WILL BE NECESSARY TO INSTALL A BACK-UP PLATE THAT IS FASTENED DIRECTLY TO STRUCTURAL MEMBERS WHEN IT IS NOT POSSIBLE TO FASTEN DIRECTLY TO STRUCTURAL BUILDING MEMBERS. USE 3/8" DIAMETER BOLT WITH A WASHER AND LOCK NUT TO FASTEN UNIT TO STRUCTURAL MEMBERS OF THE BUILDING OR TO THE BACK-UP PLATES. IF NECESSARY, USE A 3/8" DIAMETER THREADED ROD WITH A WASHER AND LOCK NUT ON EACH END.

## INSTALLATION INSTRUCTIONS

©1998 RITE-HITE ENVIRONMENTAL ENCLOSURES CORP.

REVISION HISTORY					
REV	DESCRIPTION	ECH	DATE	BY	APPROVED
A	ADDED "FOR REFERENCE ONLY" NOTE	11-010	4/6/2011	GDB	
B	ADDED INSTALL NOTES	-	7/5/12	JTD	
C	UPDATED TITLE BLOCK	14-006	3/31/2014	GDB	



A: ANCHOR POINTS

ITEM	QTY	PART NO.	DESCRIPTION
PARTS LIST / MATERIAL			
DO NOT SCALE DRAWING			
MM-DD-YY			
DRAWN BY JWB DATE 02/08/1999			
CHECKED BY DATE			
APPROVED BY DATE			
INITIAL ECH			
DATE ISSUED			
REF			
SCALE 3/4"=1'			
SHEET 2 of 2			

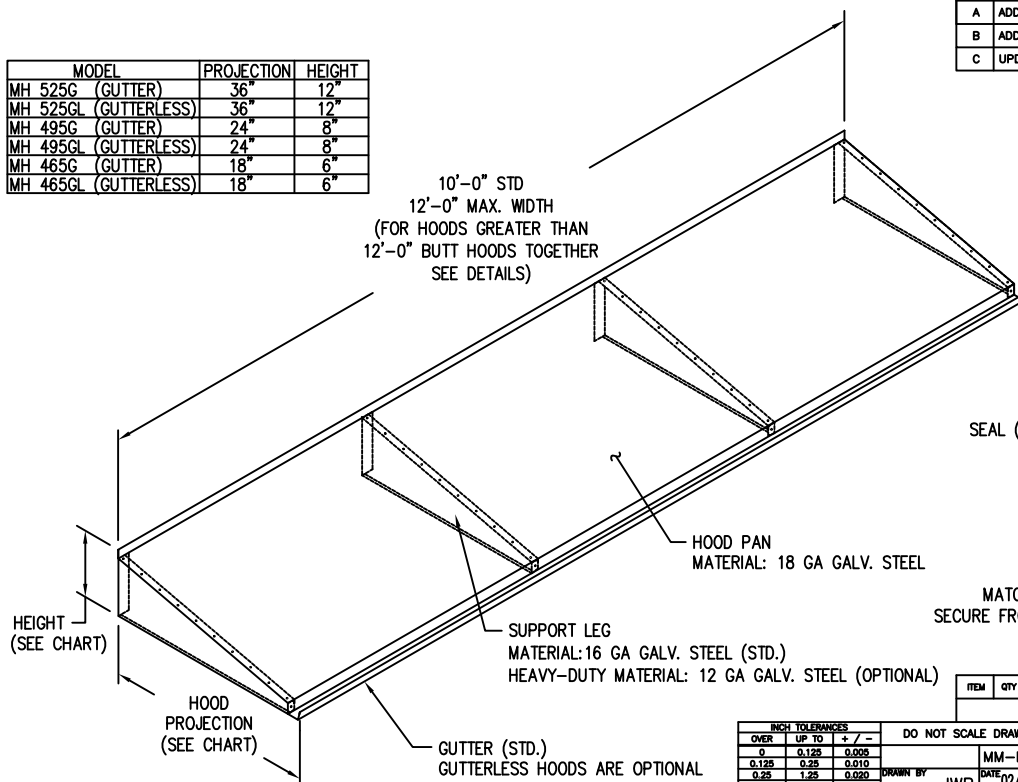
INCH TOLERANCES		
OVER	UP TO	+/-
0	0.125	0.005
0.125	0.25	0.010
0.25	1.25	0.020
1.25	5	0.030
5	15	0.040
15	40	0.050
40	80	0.100
80	-	0.125
ANGLES +/- 1 DEG		
FINISH NONE		

RITE-HITE ENVIRONMENTAL ENCLOSURES CORP.			
OPTIONS ARCHITECTURAL APPROVAL METAL HOOD			
TITLE			
SIZE B			
MODEL NUMBER			
DWG NO A7150021			
REV C			

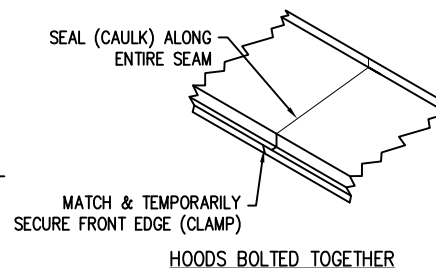
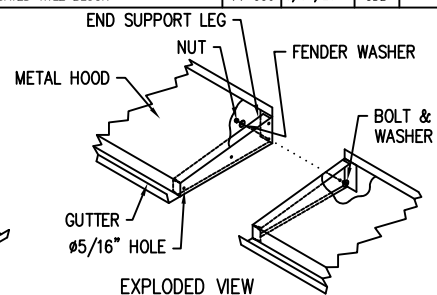
NEXT ASSEMBLY

MODEL	PROJECTION	HEIGHT
MH 525G (GUTTER)	36"	12"
MH 525GL (GUTTERLESS)	36"	12"
MH 495G (GUTTER)	24"	8"
MH 495GL (GUTTERLESS)	24"	8"
MH 465G (GUTTER)	18"	6"
MH 465GL (GUTTERLESS)	18"	6"

10'-0" STD  
12'-0" MAX. WIDTH  
(FOR HOODS GREATER THAN  
12'-0" BUTT HOODS TOGETHER  
SEE DETAILS)



REVISION HISTORY					
REV	DESCRIPTION	ECH	DATE	BY	APPROVED
A	ADDED "FOR REFERENCE ONLY" NOTE	11-010	4/6/2011	GDB	
B	ADDED INSTALL NOTES	-	7/5/12	JTD	
C	UPDATED TITLE BLOCK	14-006	3/31/2014	GDB	



ITEM	QTY	PART NO.	DESCRIPTION
PARTS LIST / MATERIAL			
DO NOT SCALE DRAWING			
MM-DD-YY			
DRAWN BY JWB DATE 02/08/1999			
CHECKED BY DATE			
APPROVED BY DATE			
INITIAL ECH			
DATE ISSUED			
REF			
SCALE 3/4"=1'			
SHEET 1 of 2			

INCH TOLERANCES		
OVER	UP TO	+/-
0	0.125	0.005
0.125	0.25	0.010
0.25	1.25	0.020
1.25	5	0.030
5	15	0.040
15	40	0.050
40	80	0.100
80	-	0.125
ANGLES +/- 1 DEG		
FINISH NONE		

RITE-HITE ENVIRONMENTAL ENCLOSURES CORP.			
OPTIONS ARCHITECTURAL APPROVAL METAL HOOD			
TITLE			
SIZE B			
MODEL NUMBER			
DWG NO A7150021			
REV C			

©1998 RITE-HITE ENVIRONMENTAL ENCLOSURES CORP.