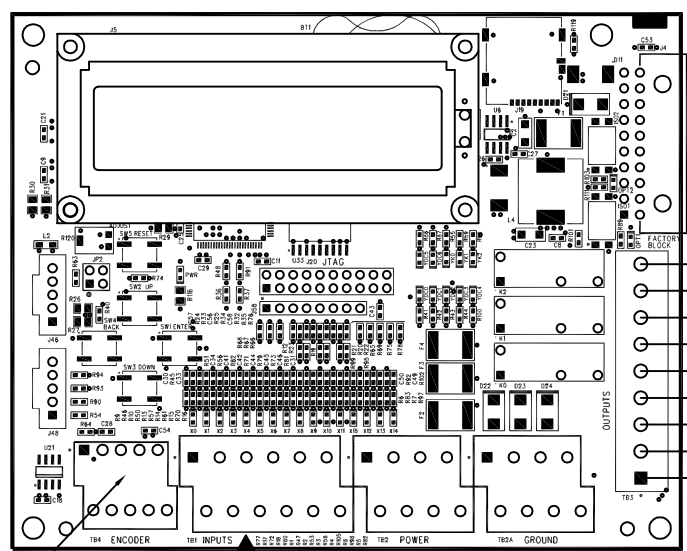
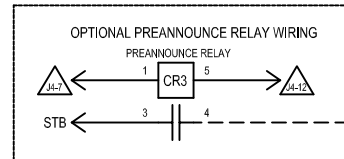
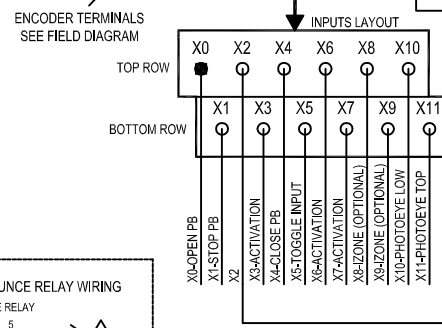


REV	DESCRIPTION	ECN	DATE	BY	APPROVED
D	ADD VFD COM WIRE	7076	1/6/16	MAS	
B	ADD ACTIVATION OPTIONS	6825	1/16/2014	TAH	
C	CHANGE MODBUS CABLE	6994	5/27/2015	TAH	



- K2N-K2 COMMON
- K2-RELAY K2 OUT
- K1N-K1 COMMON
- K1-RELAY K1 OUT
- K0N-K0 COMMON
- K0-RELAY K0 OUT
- YDC2 - PHOTOEYE TEST
- YDC1 - DC OUTPUT
- YDC0 - DC OUTPUT



STANDARD TRANSFORMER SETTINGS

LINE VOLTAGE	TAPS
208	H1-H2
220-240	H1-H3
440-480	H1-H4

OPTIONAL TRANSFORMER SETTINGS

LINE VOLTAGE	TAPS
575	H1-H4
415	H1-H3
380	H1-H2

TABLE OF RECOMMENDED FEEDER SERVICE AMPERAGES

DOOR STYLE	LINE VOLTAGES				
	220, 1Ø	208-230 3Ø	400, 3Ø	460, 3Ø	575, 3Ø
SPLITSECOND	30A	15A	10A	10A	10A

TABLE OF CONTROL BOX FULL LOAD AMP REQUIREMENTS

DOOR STYLE	LINE VOLTAGES				
	220, 1Ø	208-230 3Ø	400, 3Ø	460, 3Ø	575, 3Ø
SPLITSECOND	17.8A	9.2A	5.4A	5.4A	3.7A

CONTROL BOX FUSING

DEVICE	VOLTAGE	CURRENT RATING
F1/2/3	220, 1Ø	20 AMP
	208, 230 3Ø	15 AMP
	460 3Ø	10 AMP
F4/5	575 3Ø	6 AMP
	208, 220, 230	1 AMP
F6	400 - 575	1/2 AMP
F7	-	2 AMP
F7	-	1 AMP

CONNECTOR TABLE

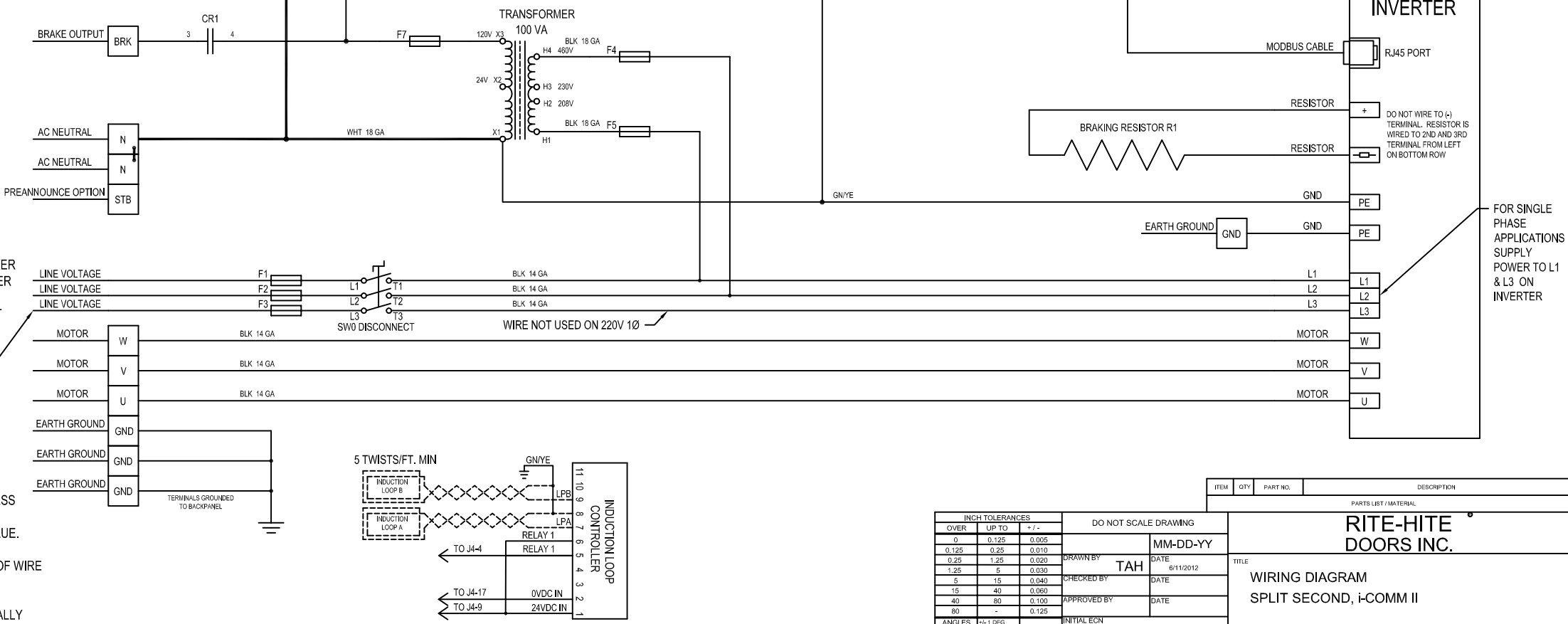
THIS TABLE SHOWS THE FUNCTION OF EACH OF THE CONNECTORS ON THE UNIVERSAL CONTROLLER. THE VOLTAGES LISTED FOR EACH PIN ASSUME THAT EITHER THE INPUT OR OUTPUT IS ACTIVATED.

CONN.	PIN #	FUNCTION	VOLTAGE
J4	1	PB POWER OUTPUT	24 VDC
	2	RESET INPUT (X12)	24 VDC
	3	POWER SUPPLY INPUT	24 VDC
	4	LOOP INPUT (X13)	24 VDC
	5	CHAINFALL POWER OUTPUT	24 VDC
	6	FAULT INPUT (X14)	24 VDC
	7	WARN. DEV. POWER OUTPUT	24 VDC
	8	PB LIGHT OUT (YDC3)	0 VDC
	9	IND. LOOP POWER OUTPUT	24 VDC
	10	IZONE ALARM OUTPUT (YDC4)	0 VDC
	11	INVERTER OUTPUT (B5)	24 VDC
	12	WARN. DEVICE OUTPUT (YDC5)	0 VDC
	13	INVERTER COMMON (B2)	24 VDC
	14	CHAINFALL OUTPUT (YDC6)	0 VDC
	15	POWER SUPPLY INPUT	0 VDC
	16	SPARE OUTPUT (YDC7)	0 VDC
	17	IND. LOOP POWER OUTPUT	0 VDC
	18	RS485 + COMMUNICATIONS	1 VDC
	19	EARTH GROUND	0 VDC
	20	RS485 - COMMUNICATIONS	-1 VDC

NOTES:
 ALL WIRES ARE 18 AWG BLUE, UNLESS OTHERWISE MARKED.
 ALL 24VDC CONTROL WIRES ARE BLUE.

△ - INDICATES OPPOSITE END OF WIRE

WARNING:
 ALL BLACK WIRES ARE AT POTENTIALLY LETHAL VOLTAGES.



INCH TOLERANCES

OVER	UP TO	TOL
0	0.125	±0.005
0.125	0.25	±0.010
0.25	1.25	±0.020
1.25	5	±0.030
5	15	±0.040
15	40	±0.060
40	80	±0.100
80	-	±0.125

DO NOT SCALE DRAWING

MM-DD-YY

DRAWN BY TAH DATE 6/11/2012

CHECKED BY DATE

APPROVED BY DATE

INITIAL ECN 6522

DATE ISSUED 6/10/2012

REF

PARTS LIST / MATERIAL

ITEM	QTY	PART NO.	DESCRIPTION

RITE-HITE DOORS INC.

TITLE: WIRING DIAGRAM SPLIT SECOND, i-COMM II

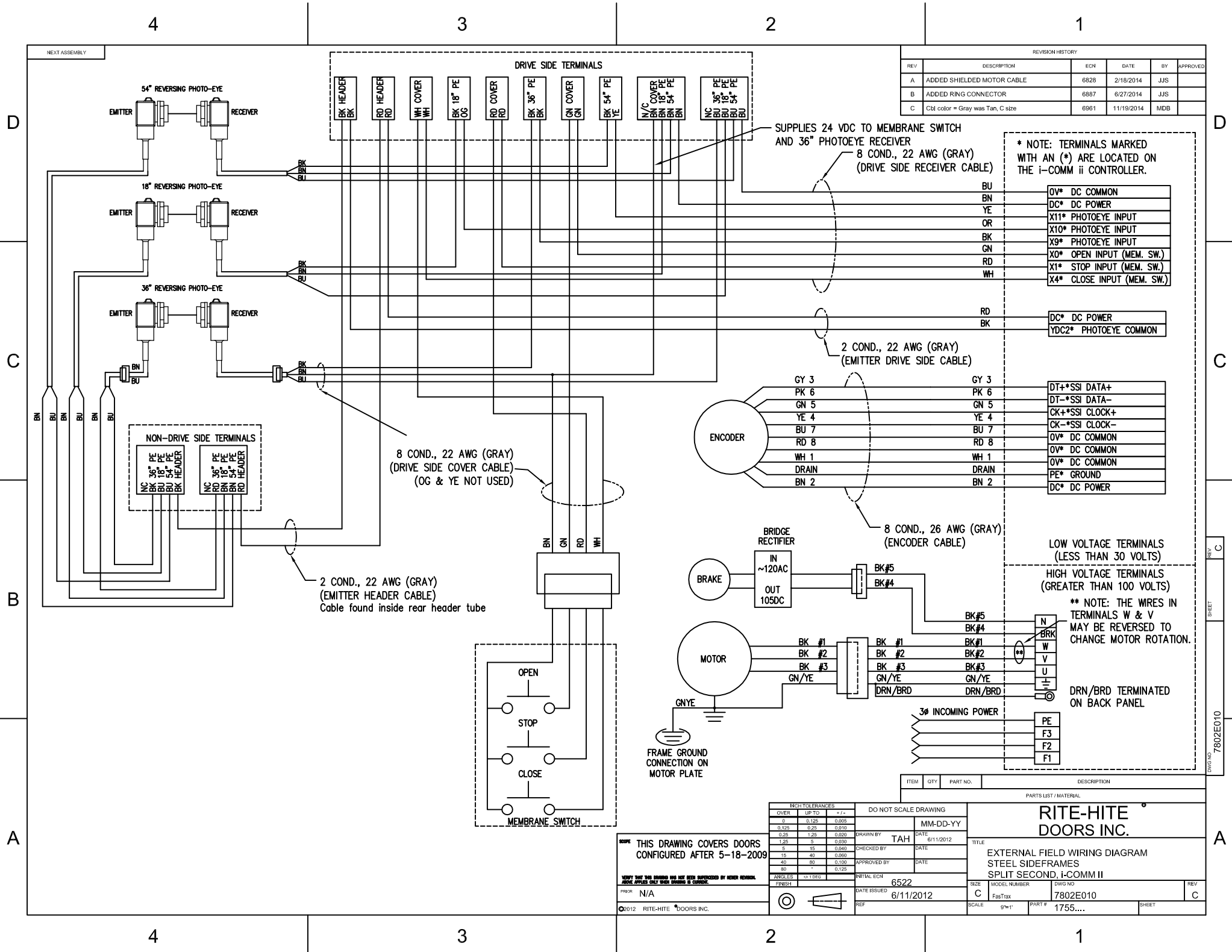
SIZE: MODEL NUMBER 7802E009

DWG NO: 1755.XXXX

REV: D

SCALE: 9"=1'

SHEET: D



REVISION HISTORY					
REV	DESCRIPTION	ECH	DATE	BY	APPROVED
A	ADDED SHIELDED MOTOR CABLE	6828	2/18/2014	JJS	
B	ADDED RING CONNECTOR	6887	8/27/2014	JJS	
C	Cbl color = Gray was Tan, C size	6961	11/19/2014	MDB	

* NOTE: TERMINALS MARKED WITH AN (*) ARE LOCATED ON THE i-COMM II CONTROLLER.

BU	0V* DC COMMON
BN	DC* DC POWER
YE	X11* PHOTOEYE INPUT
OR	X10* PHOTOEYE INPUT
BK	X9* PHOTOEYE INPUT
GN	X0* OPEN INPUT (MEM. SW.)
RD	X1* STOP INPUT (MEM. SW.)
WH	X4* CLOSE INPUT (MEM. SW.)

RD	DC* DC POWER
BK	YDC2* PHOTOEYE COMMON

GY 3	DT+*SSI DATA+
PK 6	DT-*SSI DATA-
GN 5	CK+*SSI CLOCK+
YE 4	CK-*SSI CLOCK-
BU 7	0V* DC COMMON
RD 8	0V* DC COMMON
WH 1	0V* DC COMMON
DRAIN	PE* GROUND
BN 2	DC* DC POWER

LOW VOLTAGE TERMINALS (LESS THAN 30 VOLTS)
 HIGH VOLTAGE TERMINALS (GREATER THAN 100 VOLTS)
 ** NOTE: THE WIRES IN TERMINALS W & V MAY BE REVERSED TO CHANGE MOTOR ROTATION.

ITEM	QTY	PART NO.	DESCRIPTION																																								
PARTS LIST / MATERIAL																																											
<table border="1"> <thead> <tr> <th colspan="2">INCH TOLERANCES</th> <th colspan="2">DO NOT SCALE DRAWING</th> </tr> <tr> <th>OVER</th> <th>UP TO</th> <th>DATE</th> <th>MM-DD-YY</th> </tr> </thead> <tbody> <tr> <td>0</td> <td>0.125</td> <td>6/11/2012</td> <td></td> </tr> <tr> <td>0.125</td> <td>0.25</td> <td></td> <td></td> </tr> <tr> <td>0.25</td> <td>1.25</td> <td></td> <td></td> </tr> <tr> <td>1.25</td> <td>5</td> <td></td> <td></td> </tr> <tr> <td>5</td> <td>15</td> <td></td> <td></td> </tr> <tr> <td>15</td> <td>40</td> <td></td> <td></td> </tr> <tr> <td>40</td> <td>80</td> <td></td> <td></td> </tr> <tr> <td>80</td> <td>-</td> <td></td> <td></td> </tr> </tbody> </table>				INCH TOLERANCES		DO NOT SCALE DRAWING		OVER	UP TO	DATE	MM-DD-YY	0	0.125	6/11/2012		0.125	0.25			0.25	1.25			1.25	5			5	15			15	40			40	80			80	-		
INCH TOLERANCES		DO NOT SCALE DRAWING																																									
OVER	UP TO	DATE	MM-DD-YY																																								
0	0.125	6/11/2012																																									
0.125	0.25																																										
0.25	1.25																																										
1.25	5																																										
5	15																																										
15	40																																										
40	80																																										
80	-																																										
<table border="1"> <thead> <tr> <th colspan="2">RANGE</th> <th colspan="2">INITIAL ECH</th> </tr> <tr> <th>ANGLE</th> <th>± DEG</th> <th>DATE</th> <th></th> </tr> </thead> <tbody> <tr> <td>15</td> <td>±0.04</td> <td>6/11/2012</td> <td></td> </tr> <tr> <td>30</td> <td>±0.08</td> <td></td> <td></td> </tr> <tr> <td>45</td> <td>±0.12</td> <td></td> <td></td> </tr> <tr> <td>60</td> <td>±0.15</td> <td></td> <td></td> </tr> <tr> <td>75</td> <td>±0.18</td> <td></td> <td></td> </tr> <tr> <td>90</td> <td>±0.25</td> <td></td> <td></td> </tr> </tbody> </table>				RANGE		INITIAL ECH		ANGLE	± DEG	DATE		15	±0.04	6/11/2012		30	±0.08			45	±0.12			60	±0.15			75	±0.18			90	±0.25										
RANGE		INITIAL ECH																																									
ANGLE	± DEG	DATE																																									
15	±0.04	6/11/2012																																									
30	±0.08																																										
45	±0.12																																										
60	±0.15																																										
75	±0.18																																										
90	±0.25																																										
<table border="1"> <thead> <tr> <th colspan="2">TITLE</th> <th colspan="2">SCALE</th> </tr> <tr> <th>DATE ISSUED</th> <th>BY</th> <th>SCALE</th> <th>DATE</th> </tr> </thead> <tbody> <tr> <td>6/11/2012</td> <td>TAH</td> <td>9/16" = 1'</td> <td>6/11/2012</td> </tr> <tr> <td>6/11/2012</td> <td></td> <td></td> <td></td> </tr> </tbody> </table>				TITLE		SCALE		DATE ISSUED	BY	SCALE	DATE	6/11/2012	TAH	9/16" = 1'	6/11/2012	6/11/2012																											
TITLE		SCALE																																									
DATE ISSUED	BY	SCALE	DATE																																								
6/11/2012	TAH	9/16" = 1'	6/11/2012																																								
6/11/2012																																											
<table border="1"> <thead> <tr> <th colspan="2">DESCRIPTION</th> <th colspan="2">MODEL NUMBER</th> </tr> <tr> <th>REV</th> <th>DESCRIPTION</th> <th>MODEL NUMBER</th> <th>DWG NO</th> </tr> </thead> <tbody> <tr> <td></td> <td>EXTERNAL FIELD WIRING DIAGRAM STEEL SIDEFRAMES SPLIT SECOND, i-COMM II</td> <td>7802E010</td> <td>7802E010</td> </tr> <tr> <td></td> <td></td> <td></td> <td></td> </tr> </tbody> </table>				DESCRIPTION		MODEL NUMBER		REV	DESCRIPTION	MODEL NUMBER	DWG NO		EXTERNAL FIELD WIRING DIAGRAM STEEL SIDEFRAMES SPLIT SECOND, i-COMM II	7802E010	7802E010																												
DESCRIPTION		MODEL NUMBER																																									
REV	DESCRIPTION	MODEL NUMBER	DWG NO																																								
	EXTERNAL FIELD WIRING DIAGRAM STEEL SIDEFRAMES SPLIT SECOND, i-COMM II	7802E010	7802E010																																								

SCOPE	THIS DRAWING COVERS DOORS CONFIGURED AFTER 5-18-2009
NOTE	VERIFY THAT THIS DRAWING HAS NOT BEEN SUPERSEDED BY LATER REVISIONS. REVISED PARTS ONLY HAVE PARTIAL S. CIRCLES.
FROR	N/A
©2012	RITE-HITE DOORS INC.

SHEET 7802E010

4

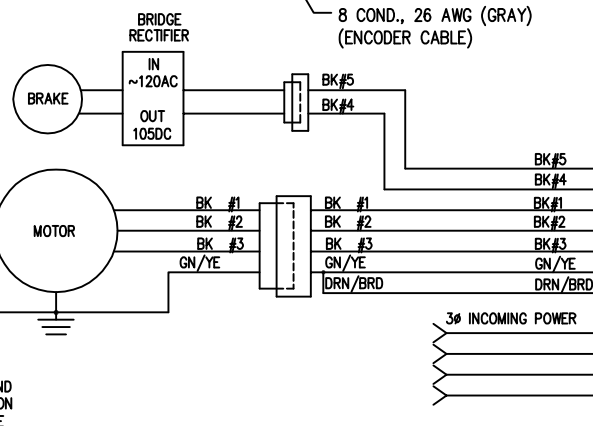
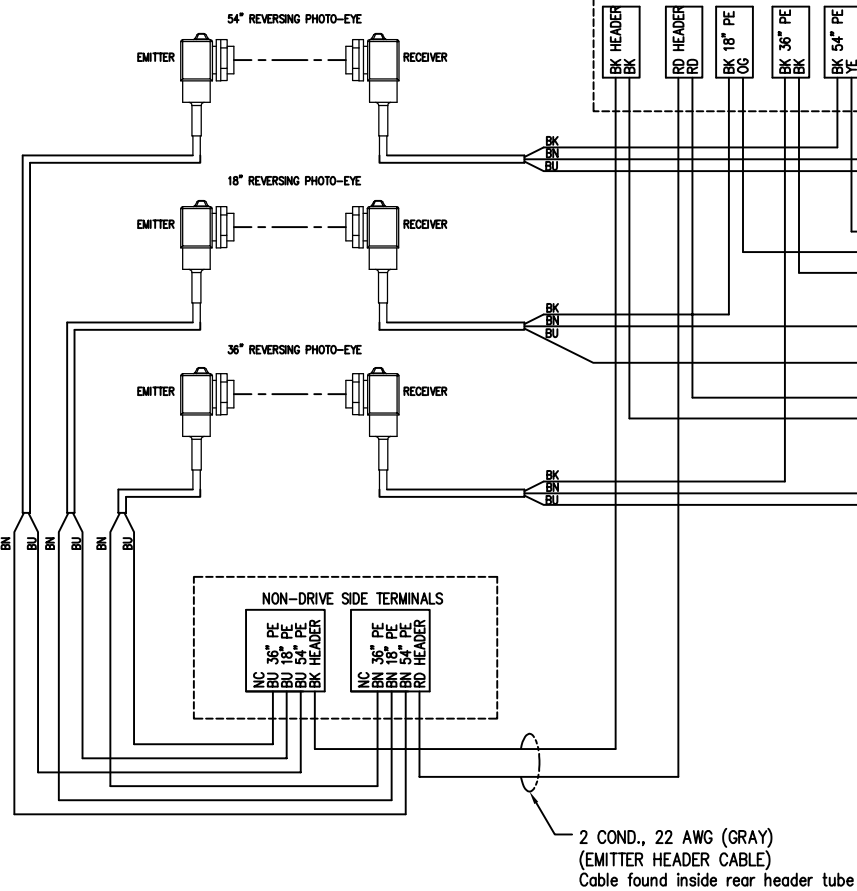
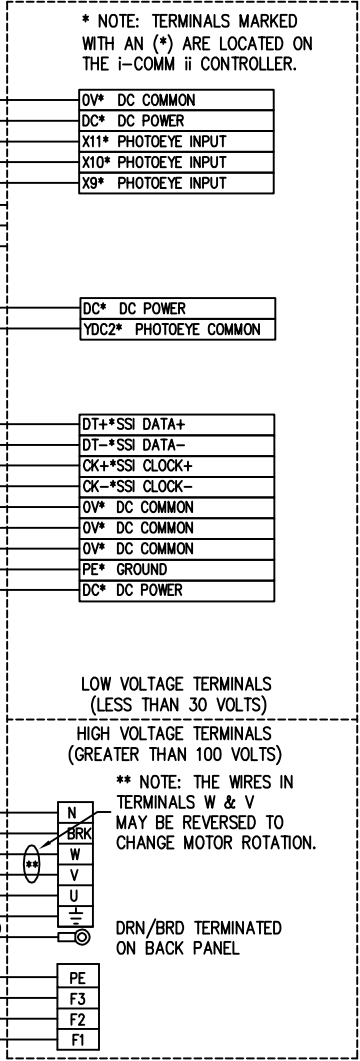
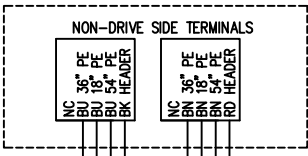
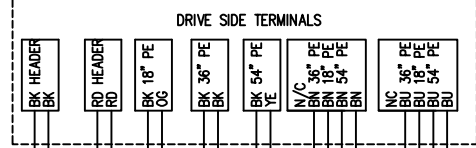
3

2

1

NEXT ASSEMBLY

REVISION HISTORY					
REV	DESCRIPTION	ECN	DATE	BY	APPROVED
D	Cable color = Gray, was Tan, C.s	????	11/19/2014	MDB	
B	ADDED SHIELDED MOTOR CABLE	6828	2/18/2014	JJS	
C	ADDED RING CONNECTOR	6887	6/27/2014	JJS	



FRAME GROUND CONNECTION ON MOTOR PLATE

ITEM	QTY	PART NO.	DESCRIPTION
PARTS LIST / MATERIAL			

INCH TOLERANCES			DO NOT SCALE DRAWING	
OVER	UP TO	+/-	DATE	MM-DD-YY
0	0.125	0.005	6/13/2012	
0.125	0.25	0.010		
0.25	1.25	0.020		
1.25	5	0.030		
5	15	0.040		
15	40	0.050		
40	80	0.100		
80	-	0.125		

SCOPE: THIS DRAWING COVERS DOORS CONFIGURED AFTER 5-18-2009

VERIFY THAT THE REVISION HAS NOT BEEN SUPERSEDED BY LATER REVISION. REVISIONS APPLIED ONLY WHEN DESIGN IS COMPLETE.

PKR: N/A

DATE ISSUED: 6/12/2012

©2012 RITE-HITE DOORS INC.

TITLE			
RITE-HITE DOORS INC.			
EXTERNAL FIELD WIRING DIAGRAM			
FABRIC SIDEFRAMES			
SPLIT SECOND, i-COMM II			
SIZE	MODEL NUMBER	DWG NO	REV
C	FabTrax	7802E013	D
SCALE	9"=1'	PART #	1755...
SHEET			

4

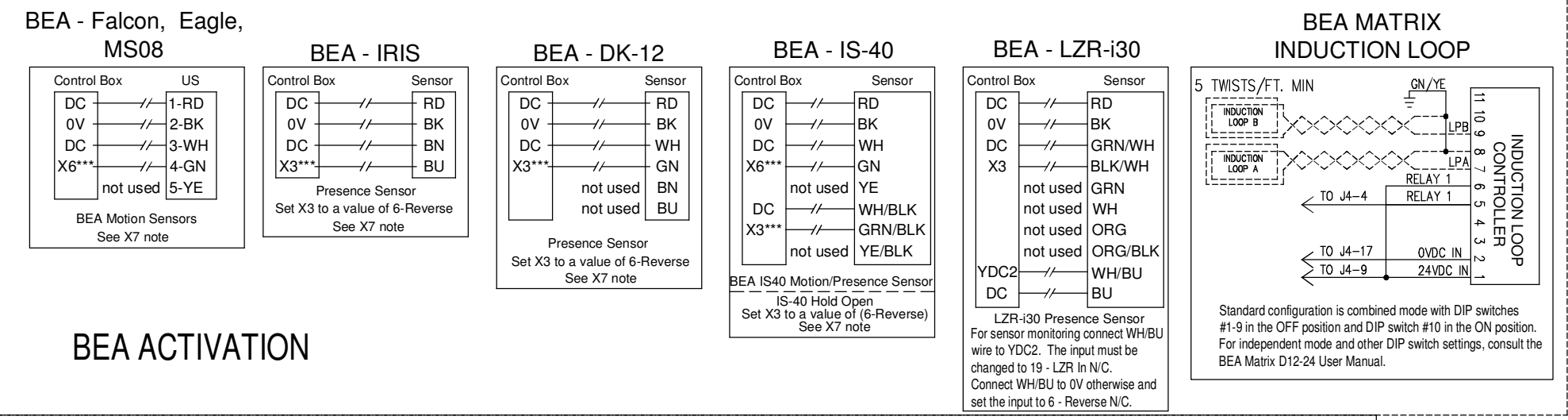
3

2

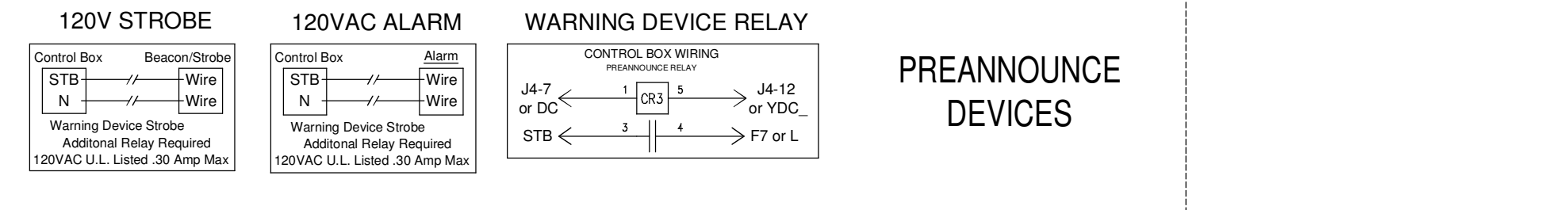
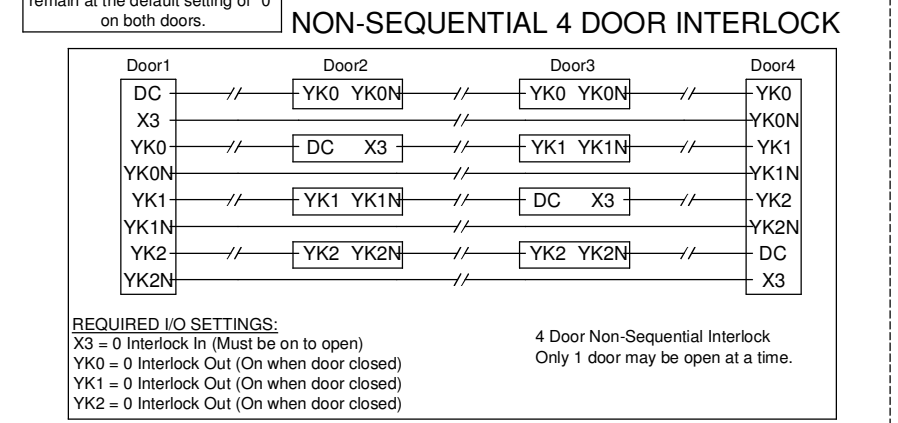
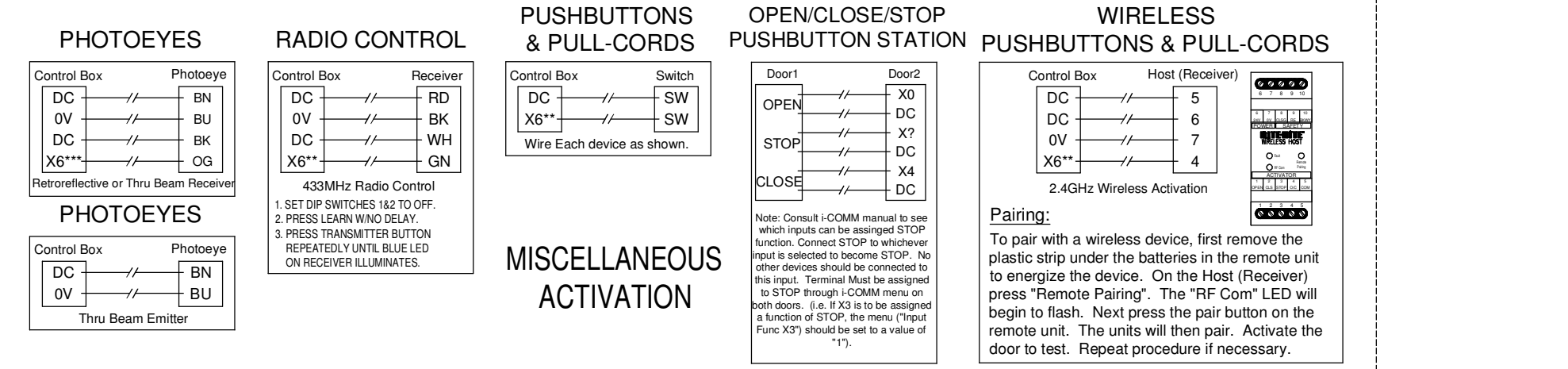
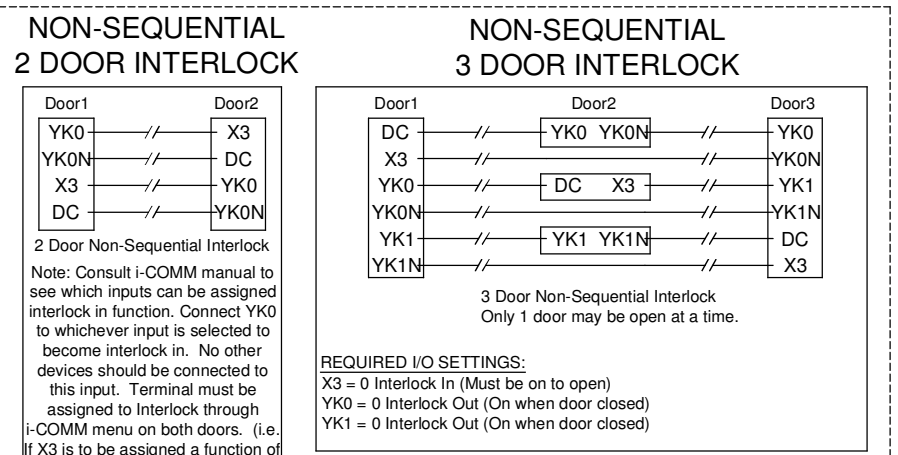
1

SHEET 7802E013

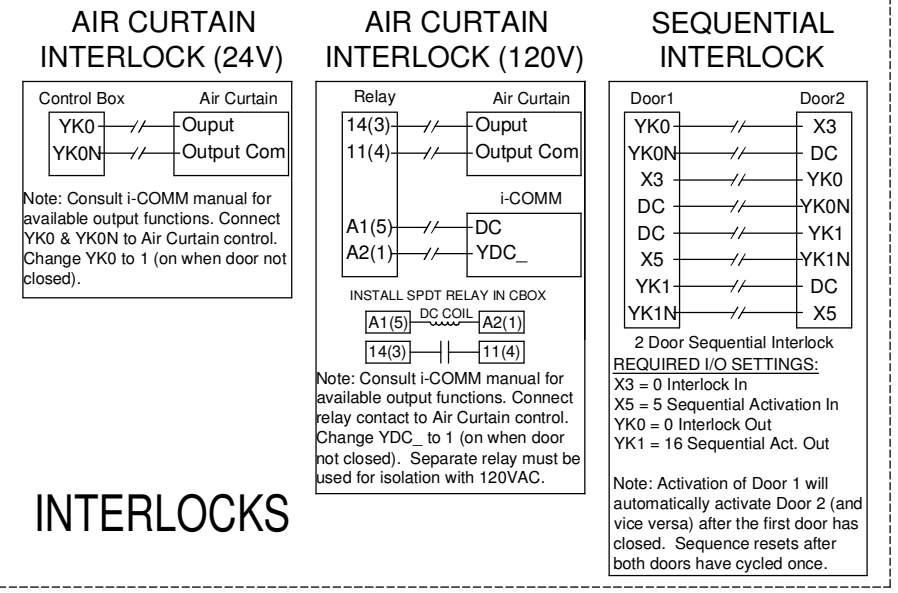
REVISION HISTORY					
REV	DESCRIPTION	ECN	DATE	BY	APPROVED
A	RENAMETERMINALS FOR BEA AND PHOT	6588	7/31/2012	BJJ	
B	ADD ACTIVATION OPTIONS	6825	1/17/2014	TAH	
C	BEA RADIO CONTROLS	6893	7/16/2014	TAH	



BEA ACTIVATION



PREANNOUNCE DEVICES



INTERLOCKS

NOTES
 This drawing assumes input functions are set to factory defaults. WARNING - never connect motion sensors to a toggle input.

Terminals "X6", "X7" are automatic reclose.
 Terminal X7 on the motor terminal strip can be used for activation devices such as motion sensors and pull cords.
 Terminals "DC" are DC common for inputs.

**For true toggle operation use terminal "X5".
 (Pull cords, push button or radio controls only.)
 ***For Reverse hold open connect sensors to UNUSED input.
 (i.e. X3, X6, or X7 and assign that input a function of "6" in the i-COMM menu. Multiple sensors can be connected in parallel.

Consult i-COMM manual and/or Door manual for additional instructions.

INCH TOLERANCES		DO NOT SCALE DRAWING		PARTS LIST / MATERIAL	
OVER	UP TO	+/-	MM-DD-YY	ITEM	QTY
0	0.125	0.005	TAH		
0.125	0.25	0.010	DATE		
0.25	1.25	0.020	DRAWN BY		
1.25	5	0.030	DATE		
5	15	0.040	CHECKED BY		
15	40	0.060	DATE		
40	80	0.100	APPROVED BY		
80	-	0.125	DATE		
ANGLES	+/- 1 DEG	INITIAL ECN	DATE		
FINISH		6522	6/11/2012		
		DATE ISSUED	REF		
		6/11/2012			

©2012 RITE-HITE DOORS INC.

RITE-HITE DOORS INC.

TITLE: SPLITSECOND SERIES ACTIVATION WIRING i-COMM II

SIZE: MODEL NUMBER DWG NO. REV: D SplitSecond 7802E012 C

SCALE: 9"-1" PART # SHEET