

NEXT ASSEMBLY	FINAL ASSEMBLY
7802E001	-

REV	DESCRIPTION	ECN	DATE	BY	APPROVED
D	CORRECT XFMR VOLTAGES	7063	11/17/2015	CLS	
E	ADD VFD COM WIRE	7076	1/6/16	MAS	
C	CHANGE MODBUS CABLE	6994	5/27/2015	TAH	

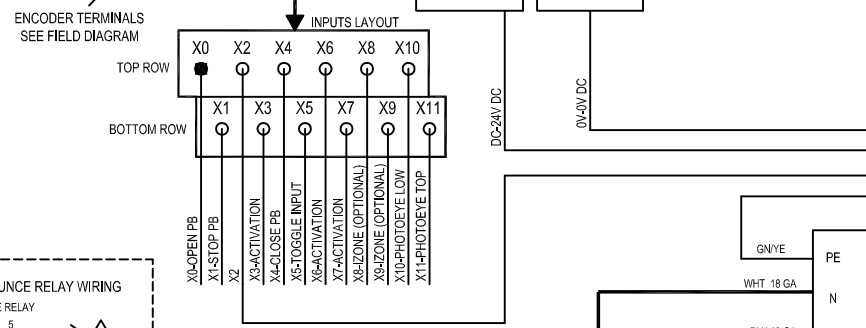
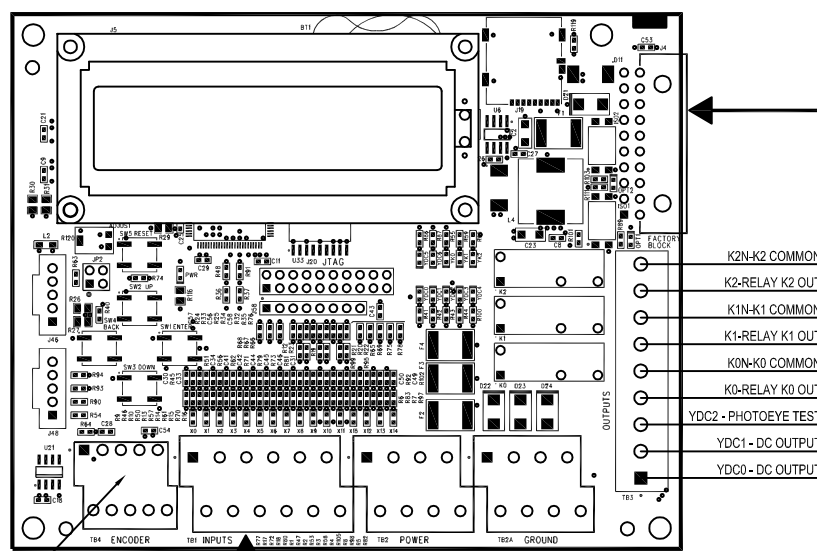
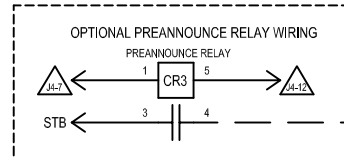
STANDARD TRANSFORMER SETTINGS	
LINE VOLTAGE	TAPS
208	H1-H2
220-240	H1-H3
440-480	H1-H4

OPTIONAL TRANSFORMER SETTINGS	
LINE VOLTAGE	TAPS
575	H1-H4
415	H1-H3
380	H1-H2

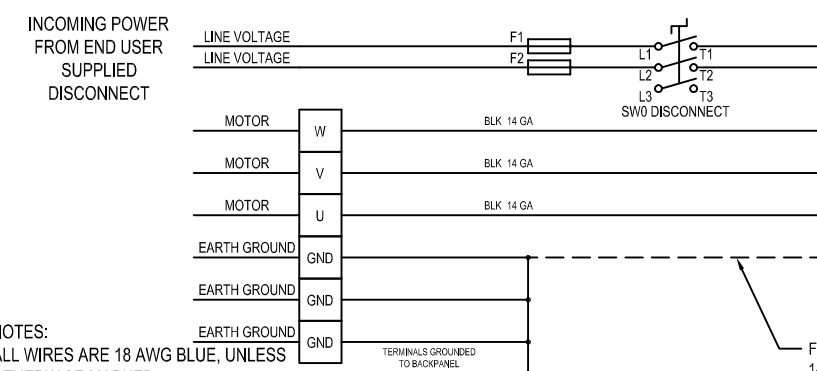
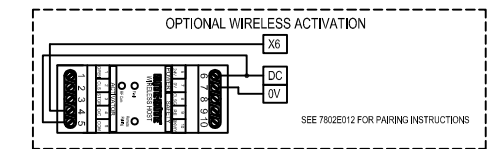
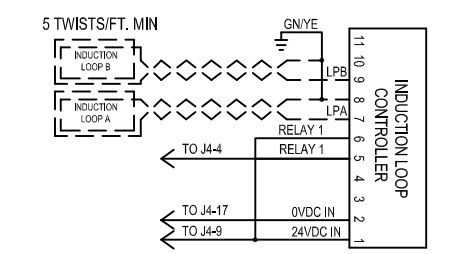
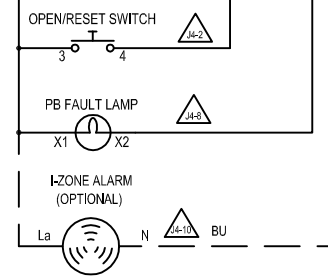
TABLE OF RECOMMENDED FEEDER SERVICE AMPERAGES					
DOOR STYLE	LINE VOLTAGES				
		220, 1Ø	208-230 3Ø	400, 3Ø	460, 3Ø
SPLITSECOND	30A	15A	10A	10A	10A

TABLE OF CONTROL BOX FULL LOAD AMP REQUIREMENTS					
DOOR STYLE	LINE VOLTAGES				
		220, 1Ø	208-230 3Ø	400, 3Ø	460, 3Ø
SPLITSECOND	17.8A	9.2A	5.4A	5.4A	3.7A

CONTROL BOX FUSING		
DEVICE	VOLTAGE	CURRENT RATING
F1/2/3	220, 1Ø	20 AMP
	208, 230 3Ø	15 AMP
	460 3Ø	10 AMP
F4/5	575 3Ø	6 AMP
	208, 220, 230	1 AMP
F6	400 - 575	1/2 AMP
F7	-	2 AMP
F7	-	1 AMP



- K2N-K2 COMMON
- K2-RELAY K2 OUT
- K1N-K1 COMMON
- K1-RELAY K1 OUT
- K0N-K0 COMMON
- K0-RELAY K0 OUT
- YDC2 - PHOTOEYE TEST
- YDC1 - DC OUTPUT
- YDC0 - DC OUTPUT



NOTES:
 ALL WIRES ARE 18 AWG BLUE, UNLESS OTHERWISE MARKED.
 ALL 24VDC CONTROL WIRES ARE BLUE.
 ALL 24VAC WIRES ARE RED.
 ALL AC NEUTRAL WIRES ARE WHITE.

WARNING:
 ALL BLACK WIRES ARE AT POTENTIALLY LETHAL VOLTAGES.

FILED INSTALLED
 14 AWG MIN, 90 DEG C
 COPPER, 600V

FIELD INSTALLED BONDING JUMPER (14 GA MIN, 600V, 90 DEG C, COPPER)
 GROUND AND BOND ACCORDIN TO LOCAL AND NATIONAL CODES

CONNECTOR TABLE			
THIS TABLE SHOWS THE FUNCTION OF EACH OF THE CONNECTORS ON THE UNIVERSAL CONTROLLER. THE VOLTAGES LISTED FOR EACH PIN ASSUME THAT EITHER THE INPUT OR OUTPUT IS ACTIVATED.			
CONN.	PIN #	FUNCTION	VOLTAGE
J4	1	PB POWER OUTPUT	24 VDC
	2	RESET INPUT (X12)	24 VDC
	3	POWER SUPPLY INPUT	24 VDC
	4	LOOP INPUT (X13)	24 VDC
	5	CHAINFALL POWER OUTPUT	24 VDC
	6	FAULT INPUT (X14)	24 VDC
	7	WARN. DEV. POWER OUTPUT	24 VDC
	8	PB LIGHT OUT (YDC3)	0 VDC
	9	IND. LOOP POWER OUTPUT	24 VDC
	10	IZONE ALARM OUTPUT (YDC4)	0 VDC
	11	INVERTER OUTPUT (B5)	24 VDC
	12	WARN. DEVICE OUTPUT (YDC5)	0 VDC
	13	INVERTER COMMON (B2)	24 VDC
	14	CHAINFALL OUTPUT (YDC6)	0 VDC
	15	POWER SUPPLY INPUT	0 VDC
	16	SPARE OUTPUT (YDC7)	0 VDC
	17	IND. LOOP POWER OUTPUT	0 VDC
	18	RS485 + COMMUNICATIONS	1 VDC
	19	EARTH GROUND	0 VDC
	20	RS485 - COMMUNICATIONS	-1 VDC

ENCODER TERMINALS
 SEE FIELD DIAGRAM

INCOMING POWER FROM END USER SUPPLIED DISCONNECT

NOTES:

ALL WIRES ARE 18 AWG BLUE, UNLESS OTHERWISE MARKED.
 ALL 24VDC CONTROL WIRES ARE BLUE.
 ALL 24VAC WIRES ARE RED.
 ALL AC NEUTRAL WIRES ARE WHITE.

WARNING:
 ALL BLACK WIRES ARE AT POTENTIALLY LETHAL VOLTAGES.

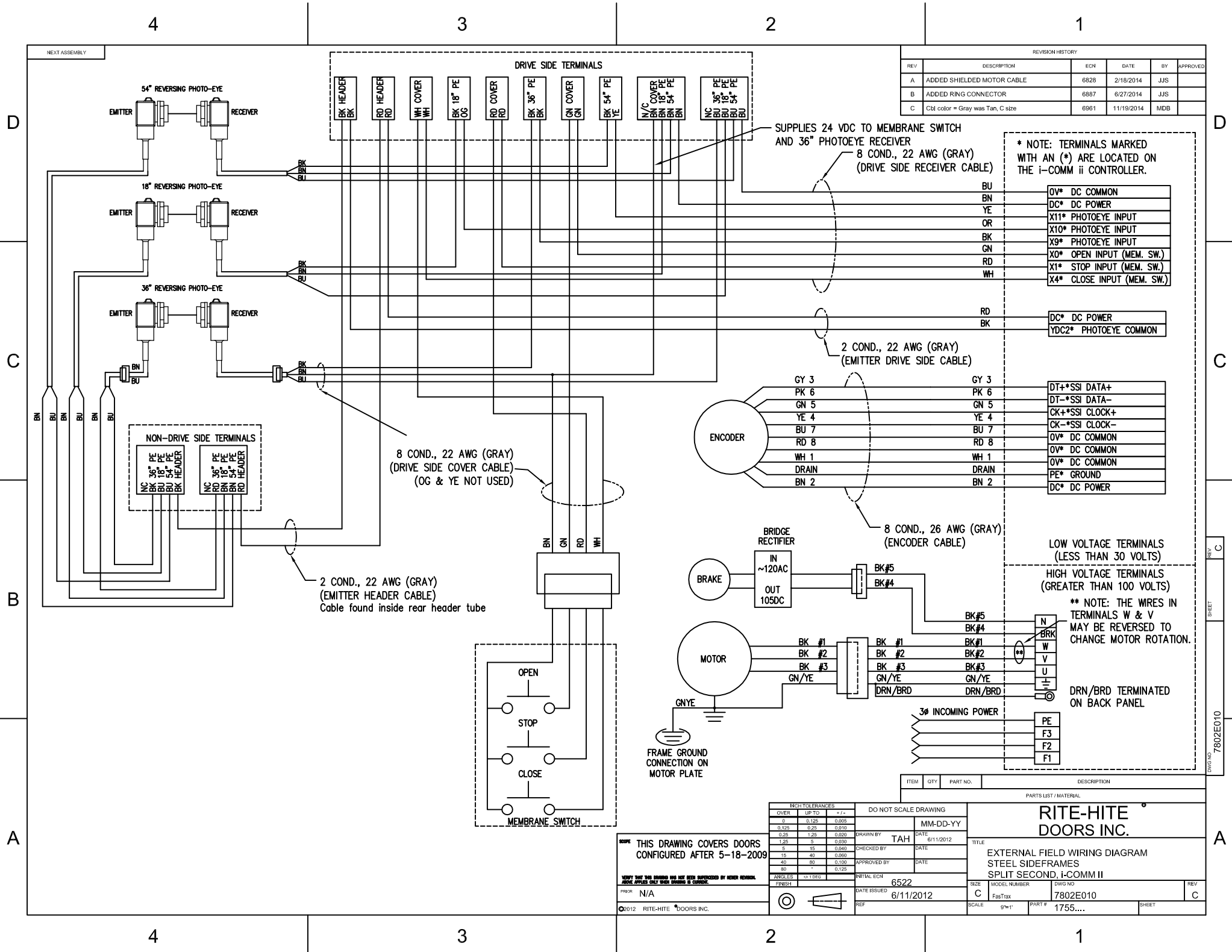
FILED INSTALLED
 14 AWG MIN, 90 DEG C
 COPPER, 600V

FIELD INSTALLED BONDING JUMPER (14 GA MIN, 600V, 90 DEG C, COPPER)
 GROUND AND BOND ACCORDIN TO LOCAL AND NATIONAL CODES

SCOPE: THIS DRAWING COVERS DOORS CONFIGURED AFTER 6/18/2012

VERIFY THAT THIS DRAWING HAS NOT BEEN SUPERCEDED BY NEVER REVISION ABOVE APPLIES ONLY WHEN DRAWING IS CURRENT.

INCH TOLERANCES		DO NOT SCALE LIST DRAWING	
OVER	UP TO	DATE	MM-DD-YY
0.125	0.125	6/11/2012	
0.25	0.25		
0.5	0.5		
1.0	1.0		
1.5	1.5		
2.0	2.0		
3.0	3.0		
4.0	4.0		
5.0	5.0		
6.0	6.0		
8.0	8.0		
10.0	10.0		
12.5	12.5		
15	15		
20	20		
30	30		
40	40		
50	50		
60	60		
80	80		
100	100		
125	125		
150	150		
200	200		
300	300		
400	400		
500	500		
600	600		
800	800		
1000	1000		
1250	1250		
1500	1500		
2000	2000		
3000	3000		
4000	4000		
5000	5000		
6000	6000		
8000	8000		
10000	10000		
12500	12500		
15000	15000		
20000	20000		
30000	30000		
40000	40000		
50000	50000		
60000	60000		
80000	80000		
100000	100000		
125000	125000		
150000	150000		
200000	200000		
300000	300000		
400000	400000		
500000	500000		
600000	600000		
800000	800000		
1000000	1000000		
1250000	1250000		
1500000	1500000		
2000000	2000000		
3000000	3000000		
4000000	4000000		
5000000	5000000		
6000000	6000000		
8000000	8000000		
10000000	10000000		
12500000	12500000		
15000000	15000000		
20000000	20000000		
30000000	30000000		
40000000	40000000		
50000000	50000000		
60000000	60000000		
80000000	80000000		
100000000	100000000		
125000000	125000000		
150000000	150000000		
200000000	200000000		
300000000	300000000		
400000000	400000000		
500000000	500000000		
600000000	600000000		
800000000	800000000		
1000000000	1000000000		
1250000000	1250000000		
1500000000	1500000000		
2000000000	2000000000		
3000000000	3000000000		
4000000000	4000000000		
5000000000	5000000000		
6000000000	6000000000		
8000000000	8000000000		
10000000000	10000000000		
12500000000	12500000000		
15000000000	15000000000		
20000000000	20000000000		
30000000000	30000000000		
40000000000	40000000000		
50000000000	50000000000		
60000000000	60000000000		
80000000000	80000000000		
100000000000	100000000000		
125000000000	125000000000		
150000000000	150000000000		
200000000000	200000000000		
300000000000	300000000000		
400000000000	400000000000		
500000000000	500000000000		
600000000000	600000000000		
800000000000	800000000000		
1000000000000	1000000000000		
1250000000000	1250000000000		
1500000000000	1500000000000		
2000000000000	2000000000000		
3000000000000	3000000000000		
4000000000000	4000000000000		
5000000000000	5000000000000		
6000000000000	6000000000000		
8000000000000	8000000000000		
10000000000000	10000000000000		
12500000000000	12500000000000		
15000000000000	15000000000000		
20000000000000	20000000000000		
30000000000000	30000000000000		
40000000000000	40000000000000		
50000000000000	50000000000000		
60000000000000	60000000000000		
80000000000000	80000000000000		
100000000000000	100000000000000		
125000000000000	125000000000000		
150000000000000	150000000000000		
200000000000000	200000000000000		
300000000000000	300000000000000		
400000000000000	400000000000000		
500000000000000	500000000000000		
600000000000000	600000000000000		
800000000000000	800000000000000		
1000000000000000	1000000000000000		
1250000000000000	1250000000000000		
1500000000000000	1500000000000000		
2000000000000000	2000000000000000		
3000000000000000	3000000000000000		
4000000000000000	4000000000000000		
5000000000000000	5000000000000000		
6000000000000000	6000000000000000		
8000000000000000	8000000000000000		
10000000000000000	10000000000000000		
12500000000000000	12500000000000000		
15000000000000000	15000000000000000		
20000000000000000	20000000000000000		
30000000000000000	30000000000000000		
40000000000000000	40000000000000000		
50000000000000000	50000000000000000		
60000000000000000	60000000000000000		
80000000000000000	80000000000000000		
100000000000000000	100000000000000000		
125000000000000000	125000000000000000		
150000000000000000	150000000000000000		
200000000000000000	200000000000000000		
300000000000000000	300000000000000000		
400000000000000000	400000000000000000		
500000000000000000	500000000000000000		
600000000000000000	600000000000000000		
800000000000000000	800000000000000000		
10			



INCH TOLERANCES		DO NOT SCALE DRAWING	
OVER	UP TO	DATE	MM-DD-YY
0	0.125	DRAWN BY	TAH
0.125	0.25	CHECKED BY	DATE
0.25	1.25	APPROVED BY	DATE
1.25	5	INITIAL ECH	6522
5	15	DATE ISSUED	6/11/2012
15	40	SCALE	1"=1'
40	80	SIZE	C
80	-	MODEL NUMBER	7802E010
ANGLES		FASTAX	7802E010
< 15 DEG		PART #	1755....
15-30		SCALE	9/16" = 1"
30-45		SHEET	C
45-90			
90-180			

SHEET 7802E010

4

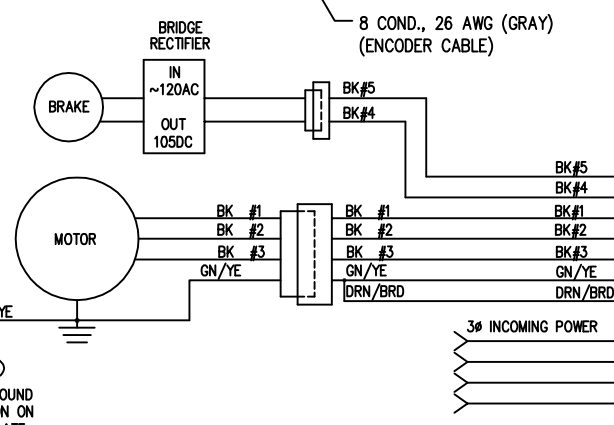
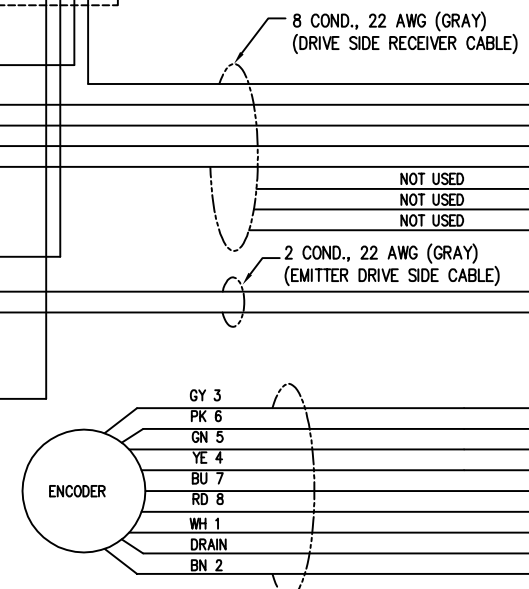
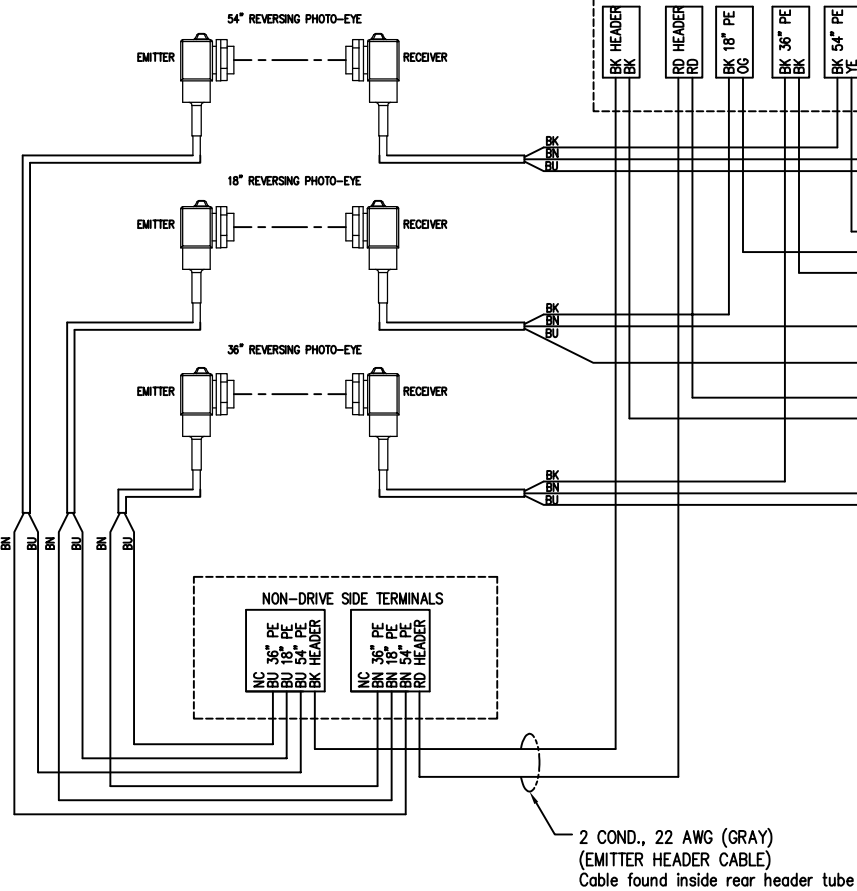
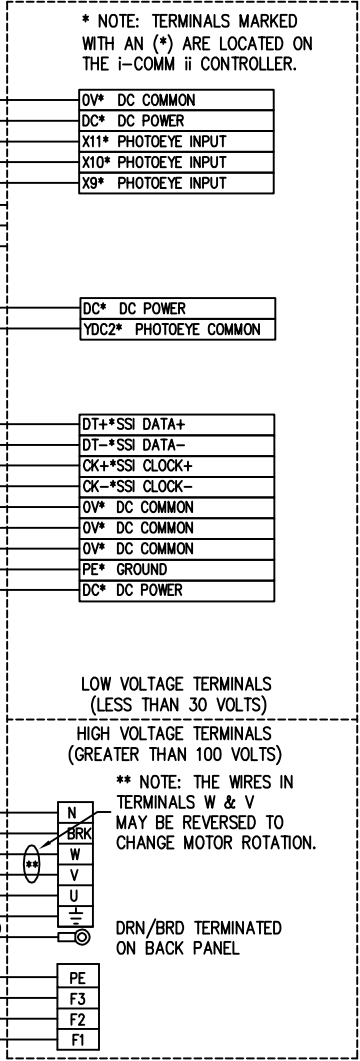
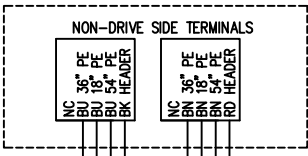
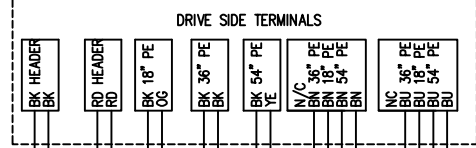
3

2

1

NEXT ASSEMBLY

REVISION HISTORY					
REV	DESCRIPTION	ECN	DATE	BY	APPROVED
D	Cable color = Gray, was Tan, C.s	????	11/19/2014	MDB	
B	ADDED SHIELDED MOTOR CABLE	6828	2/18/2014	JJS	
C	ADDED RING CONNECTOR	6887	6/27/2014	JJS	



D

C

B

A

D

C

D

SHEET

7802E013

A

SCOPE THIS DRAWING COVERS DOORS CONFIGURED AFTER 5-18-2009

VERIFY THAT THIS DRAWING HAS NOT BEEN SUPERSEDED BY LATER REVISIONS. CHECK APPROVED ONLY WHEN DRAWING IS CONSULTED.

PRKR N/A

©2012 RITE-HITE DOORS INC.

INCH TOLERANCES			DO NOT SCALE DRAWING	
OVER	UP TO	+/-	DATE	MM-DD-YY
0	0.125	0.005	6/13/2012	
0.125	0.25	0.010		
0.25	1.25	0.020		
1.25	5	0.030		
5	15	0.040		
15	40	0.050		
40	80	0.100		
80	-	0.125		

PARTS LIST / MATERIAL			
ITEM	QTY	PART NO.	DESCRIPTION
<p>RITE-HITE DOORS INC.</p> <p>TITLE: EXTERNAL FIELD WIRING DIAGRAM FABRIC SIDEFRAMES SPLIT SECOND, i-COMM II</p> <p>SIZE: MODEL NUMBER 7802E013 DWG NO. 7802E013</p> <p>SCALE: 9/16"=1' PART # 1755... SHEET D</p>			

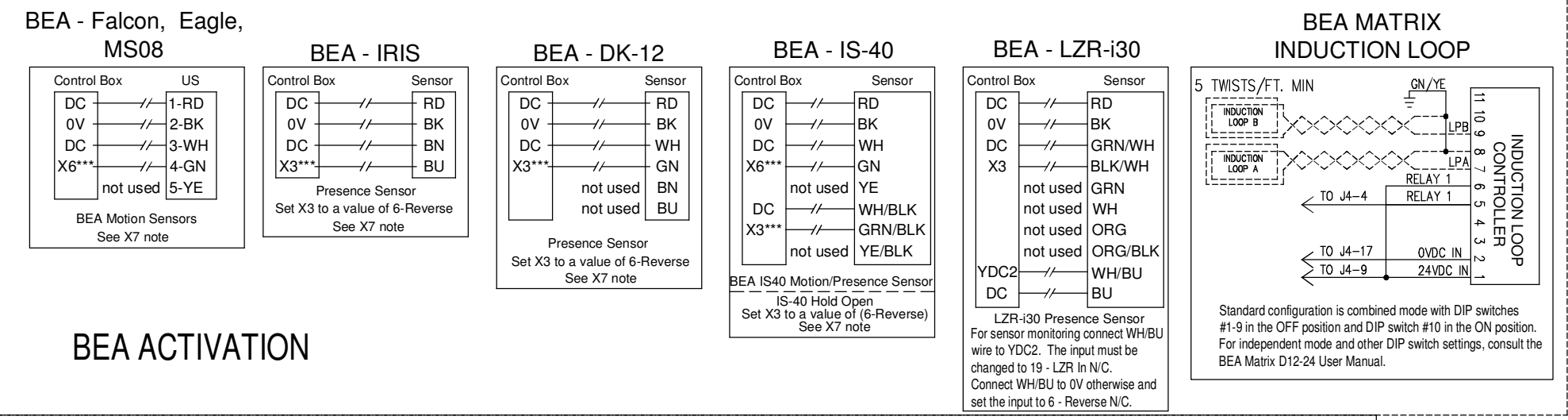
4

3

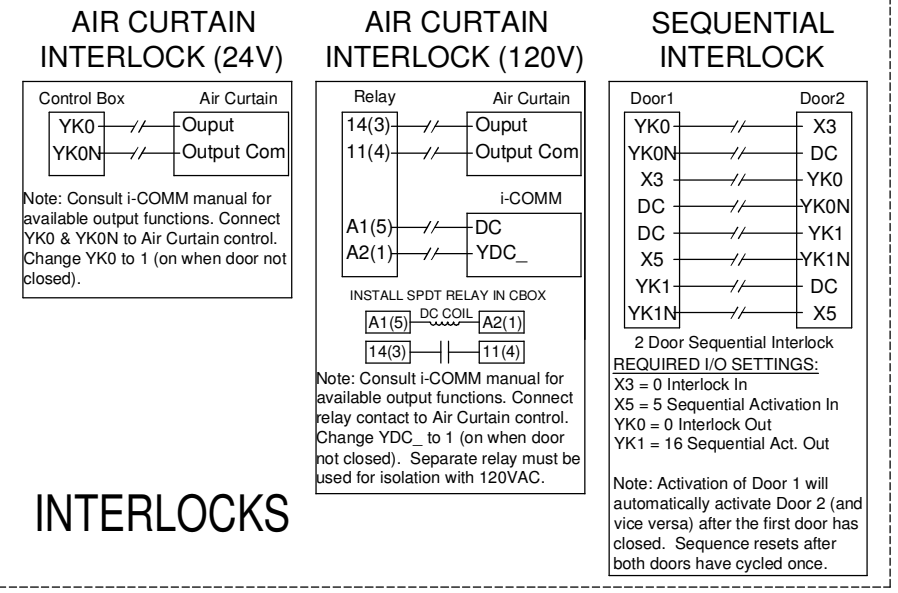
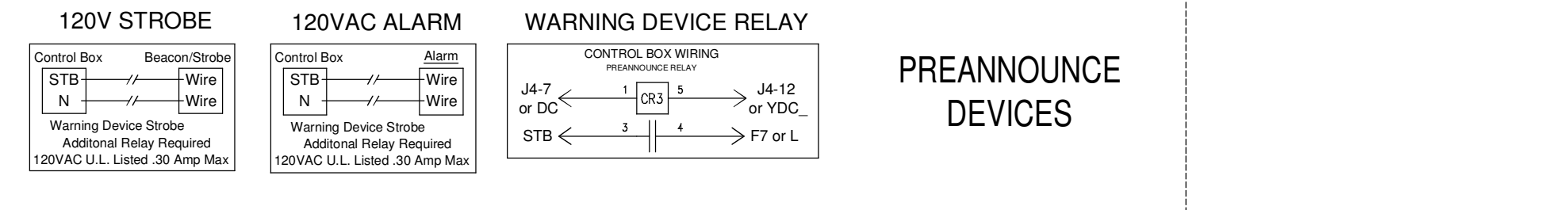
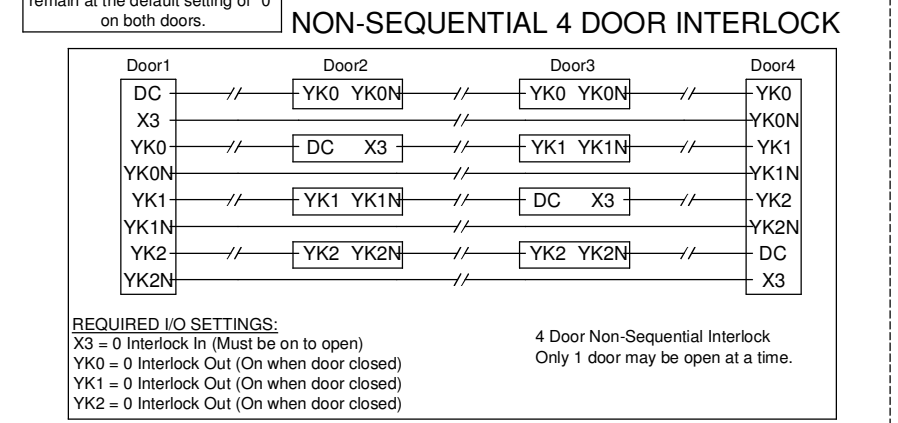
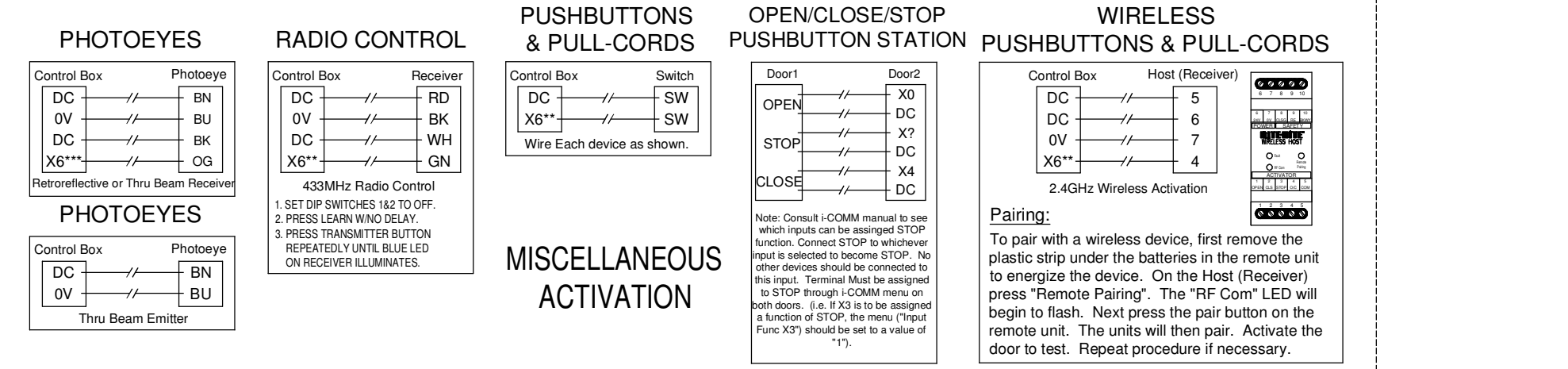
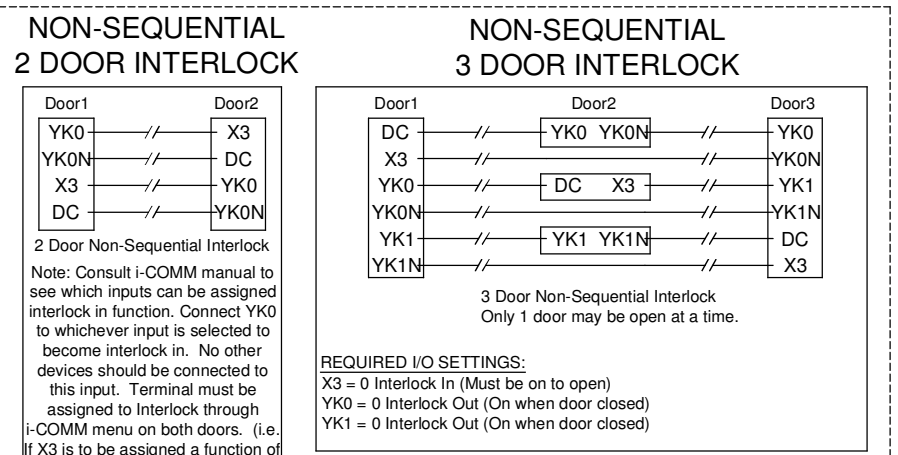
2

1

REVISION HISTORY					
REV	DESCRIPTION	ECN	DATE	BY	APPROVED
A	RENAMETERMINALS FOR BEA AND PHOT	6588	7/31/2012	BJJ	
B	ADD ACTIVATION OPTIONS	6825	1/17/2014	TAH	
C	BEA RADIO CONTROLS	6893	7/16/2014	TAH	



BEA ACTIVATION



INTERLOCKS

NOTES
 This drawing assumes input functions are set to factory defaults. WARNING - never connect motion sensors to a toggle input.

Terminals "X6", "X7" are automatic reclose.
 Terminal X7 on the motor terminal strip can be used for activation devices such as motion sensors and pull cords.
 Terminals "DC" are DC common for inputs.

**For true toggle operation use terminal "X5".
 (Pull cords, push button or radio controls only.)
 ***For Reverse hold open connect sensors to UNUSED input.
 (i.e. X3, X6, or X7 and assign that input a function of "6" in the i-COMM menu. Multiple sensors can be connected in parallel.

Consult i-COMM manual and/or Door manual for additional instructions.

INCH TOLERANCES		DO NOT SCALE DRAWING		PARTS LIST / MATERIAL	
OVER	UP TO	+/-		ITEM	QTY
0	0.125	0.005			
0.125	0.25	0.010			
0.25	1.25	0.020			
1.25	5	0.030			
5	15	0.040			
15	40	0.060			
40	80	0.100			
80	-	0.125			
ANGLES	+/- 1 DEG				
FINISH					

DATE ISSUED	6/11/2012	DATE	6/11/2012
APPROVED BY	TAH	CHECKED BY	TAH
MM-DD-YY	MM-DD-YY	DATE	DATE
INITIAL ECN	6522	DATE	DATE
REF	6/11/2012	DATE	DATE

RITE-HITE DOORS INC.		SPLITSECOND SERIES ACTIVATION WIRING i-COMM II	
SIZE	MODEL NUMBER	DWG NO	REV
D	SplitSecond	7802E012	C
SCALE	9"-1"	PART #	SHEET