

NEXT ASSEMBLY	FINAL ASSEMBLY
7802E003	-

REV	DESCRIPTION	ECN	DATE	BY	APPROVED
A	=220V, was 230, remove encoder p	6166	9/8/2010	MDB	

STANDARD TRANSFORMER SETTINGS	
LINE VOLTAGE	TAPS
208	H1-H2
220-240	H1-H3
440-480	H1-H4

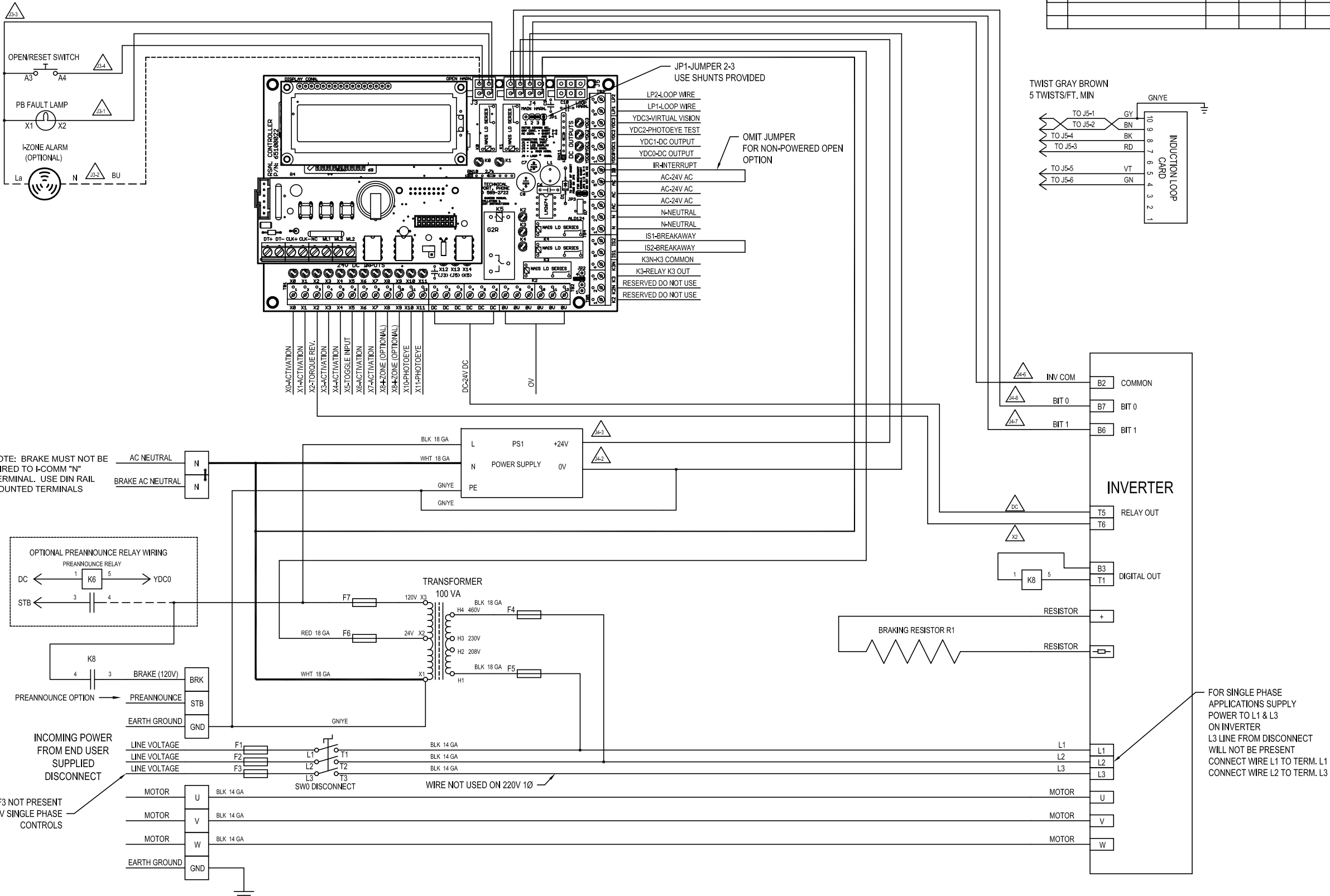
OPTIONAL TRANSFORMER SETTINGS	
LINE VOLTAGE	TAPS
575	H1-H4
415	H1-H3
380	H1-H2

TABLE OF RECOMMENDED FEEDER SERVICE AMPERAGES					
DOOR STYLE	LINE VOLTAGES				
		220, 1Ø	208-230 3Ø	400, 3Ø	460, 3Ø
SPLITSECOND	30A	15A	10A	10A	10A

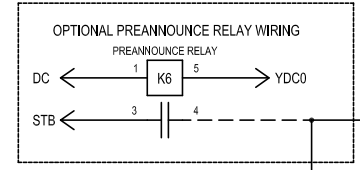
TABLE OF CONTROL BOX FULL LOAD AMP REQUIREMENTS					
DOOR STYLE	LINE VOLTAGES				
		220, 1Ø	208-230 3Ø	400, 3Ø	460, 3Ø
SPLITSECOND	17.8A	9.2A	5.4A	5.4A	3.7A

CONTROL BOX FUSING		
DEVICE	VOLTAGE	CURRENT RATING
F1/2/3	220, 1Ø	20 AMP
	208, 230 3Ø	15 AMP
	460 3Ø	10 AMP
	575 3Ø	6 AMP
F4/5	208, 220, 230	1 AMP
F6	400 - 575	1/2 AMP
F7	-	2 AMP
F7	-	1 AMP

CONNECTOR TABLE			
THIS TABLE SHOWS THE FUNCTION OF EACH OF THE CONNECTORS ON THE UNIVERSAL CONTROLLER. THE VOLTAGES LISTED FOR EACH PIN ASSUME THAT EITHER THE INPUT OR OUTPUT IS ACTIVATED.			
CONN.	PIN #	FUNCTION	VOLTAGE
J3	1	FLASHING LAMP OUT	0 VDC
	2	I-ZONE ALARM	0 VDC
	3	DC POWER OUT	24 VDC
	4	RESET INPUT (X12)	24 VDC
J4	1	UNUSED	
	2	DC COMMON INPUT	0 VDC
	3	DC POWER INPUT	24 VDC
	4	24V AC INPUT	24 VAC
	5	24V AC COMMON (N)	24 VAC
	6	INVERTER COMMON	24 VDC
	7	INVERTER OUTPUT (K1)	24 VDC
	8	INVERTER OUTPUT (K0)	24 VDC
J5	1	LOOP INPUT 2	
	2	LOOP INPUT 1	
	3	DC POWER OUT	24 VDC
	4	DC COMMON OUT	24 VDC
	5	DC POWER OUT	24 VDC
	6	LOOP INPUT (X13)	24 VDC



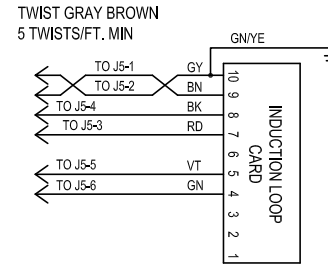
NOTE: BRAKE MUST NOT BE WIRED TO I-COMM "N" TERMINAL. USE DIN RAIL MOUNTED TERMINALS



FUSE F3 NOT PRESENT ON 220V SINGLE PHASE CONTROLS

NOTES:
 ALL WIRES ARE 18 AWG BLUE, UNLESS OTHERWISE MARKED.
 ALL 24VDC CONTROL WIRES ARE BLUE.
 ALL 24VAC WIRES ARE RED.
 ALL AC NEUTRAL WIRES ARE WHITE.

WARNING:
 ALL BLACK WIRES ARE AT POTENTIALLY LETHAL VOLTAGES.



FOR SINGLE PHASE APPLICATIONS SUPPLY POWER TO L1 & L3 ON INVERTER. L3 LINE FROM DISCONNECT WILL NOT BE PRESENT. CONNECT WIRE L1 TO TERM. L1. CONNECT WIRE L2 TO TERM. L3.

INCH TOLERANCES			DO NOT SCALE DRAWING	
OVER	UP TO	+/-	DATE	MM-DD-YY
0.125	0.125	0.005	DRAWN BY	RPB
0.25	0.25	0.010	CHECKED BY	DATE
0.5	0.5	0.020	APPROVED BY	DATE
1.0	1.0	0.040	INITIAL ECN	5868
2.0	2.0	0.080	DATE ISSUED	6/26/2009
4.0	4.0	0.100	REF	
8.0	8.0	0.125		
ANGLES	+/- 1 DEG			
FINISH				

SCOPE: THIS DRAWING COVERS DOORS CONFIGURED AFTER 5-18-2009

VERIFY THAT THIS DRAWING HAS NOT BEEN SUPERCEDED BY NEVER REVISION ABOVE APPLIES EXCEPT WHEN DRAWING IS CURRENT.

PROR: N/A

©2008 RITE-HITE DOORS INC.

ITEM	QTY	PART NO.	DESCRIPTION
PARTS LIST / MATERIAL			
RITE-HITE DOORS INC.			
WIRING DIAGRAM			
SIZE	MODEL NUMBER	DWG NO	REV
D	SplitSecond	7802E002	A
SCALE	9"=1"	PART #	SHEET
		1747....	

REVISION HISTORY					
REV	DESCRIPTION	ECN	DATE	BY	APPROVED

D

D

C

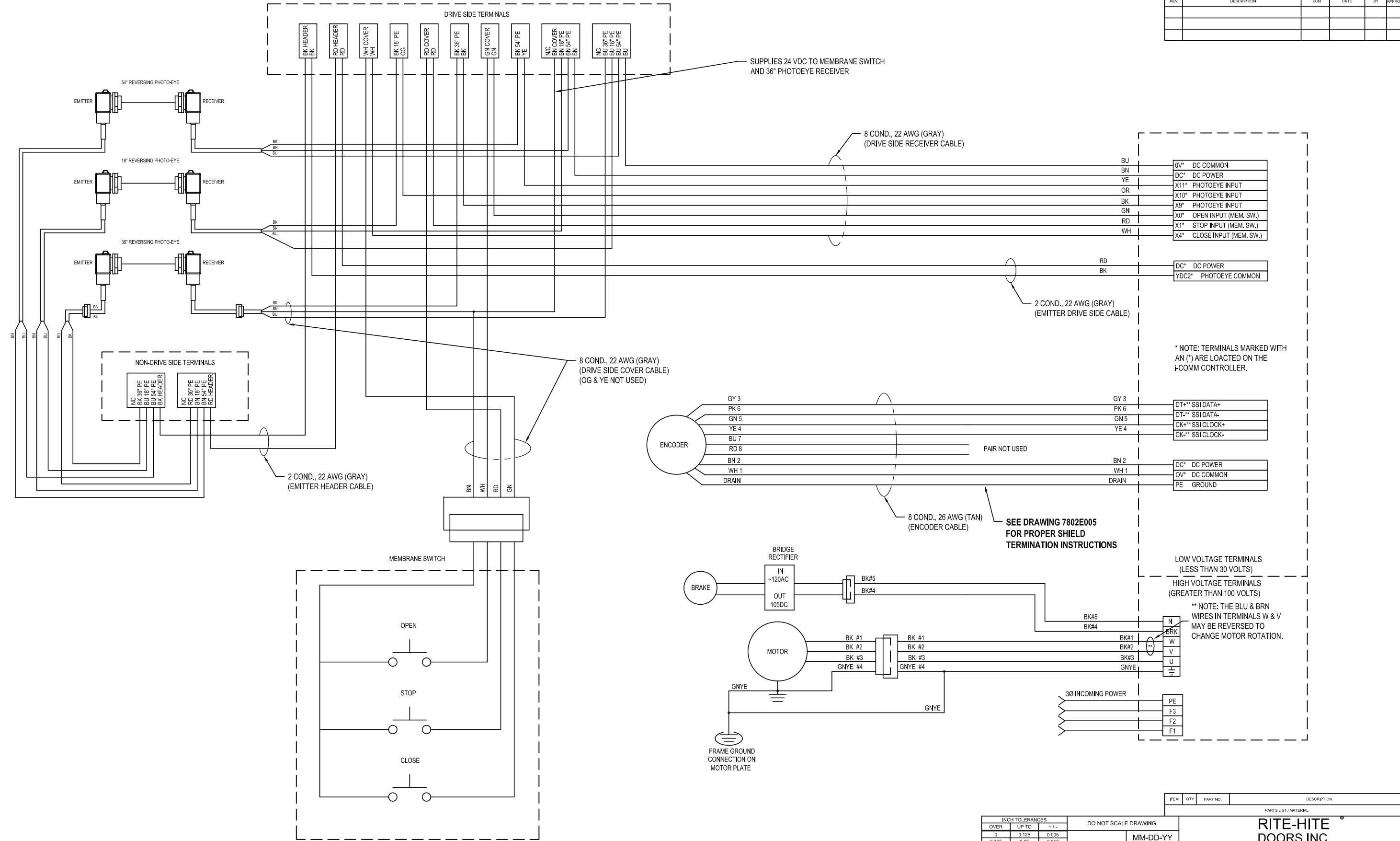
C

B

B

A

A



* NOTE: TERMINALS MARKED WITH AN (*) ARE LOACTED ON THE i-COMM CONTROLLER.

SEE DRAWING 7802E005 FOR PROPER SHIELD TERMINATION INSTRUCTIONS

LOW VOLTAGE TERMINALS (LESS THAN 30 VOLTS)
 HIGH VOLTAGE TERMINALS (GREATER THAN 100 VOLTS)
 ** NOTE: THE BLU & BRN WIRES IN TERMINALS W & V MAY BE REVERSED TO CHANGE MOTOR ROTATION.

SCOPE THIS DRAWING COVERS DOORS CONFIGURED AFTER 5-18-2009

VERIFY THAT THIS DRAWING HAS NOT BEEN SUPERCEDED BY NEWER REVISION. ABOVE APPLIES ONLY WHEN DRAWING IS CORRECT.

PROJ: N/A

INCH TOLERANCES		DO NOT SCALE DRAWING	
OVER	UP TO	DATE	MM-DD-YY
0	0.125	3/18/2008	
0.125	0.25		
0.25	1.25		
1.25	5		
5	15		
15	40		
40	80		
80	125		

ITEM	QTY	PART NO.	DESCRIPTION
PARTS LIST / MATERIAL			
RITE-HITE DOORS INC.			
TITLE			EXTERNAL FIELD WIRING DIAGRAM
SIZE	MODEL NUMBER	DWG NO	REV
D	FastTrack	7802E003	
SCALE	9"=1'	PART #	1747....
SHEET			

4

3

2

1

NEXT ASSEMBLY	FINAL ASSEMBLY
7802E001	-

REVISION HISTORY				
REV.	DATE	DESCRIPTION	ECN	BY
A	7/23/2009	PRODUCTION RELEASE	5868	RPB

ASSEMBLY VIEW

DETAIL A
SCALE 2 : 1

CABLE STRIPPING DIMENSIONS

INSTRUCTIONS:

1. STRIP CABLE AS SHOWN. DOUBLE OVER SHIELD AND TRIM OR TAPE BRAIDED SHIELD .38
2. CLAMP AS SHOWN OVER BRAIDED SHIELD. CLAMP SHOULD NOT BE IN CONTACT WITH CONDUCTORS. LEAVE AT LEAST 1/8" PLASTIC PROTECTIVE COVERING BEYOND SHIELD.

BOM Table				
ITEM	QTY.	PART NUMBER	DRAWING	DESCRIPTION
1	1	16700024	(9999M166)	CLAMP,CABLE,STNLS,1/8
2	1	67850015	(9900M032)	SCR,PHLP,DR/TP,#8X1/2
3	1	74100004	(9902M018)	WSHR,LOCK,INT/EXT,#10,ZNC

FINISH		MATERIAL		DRAWN BY rbeggs		RITE-HITE® DOORS INC.	
UNLESS OTHERWISE SPECIFIED DIMENSIONS ARE IN INCHES.		DRAWN DATE		DATE ISSUED 07/22/2009			
TOLERANCES:		INITIAL ECN 5868		DATE ISSUED 07/22/2009		TITLE ENCODER SHIELD TERMINATION INSTRUCTIONS	
X = ±.050		THIRD ANGLE PROJECTION		REFERENCE		SIZE MODEL C SplitSecond/PH	
XX = ±.010		ALL SHEETS ARE THE SAME REVISION STATUS		DO NOT SCALE DRAWING		DWG NO 7802E005	
XXX = ±.005		© 2009 RITE-HITE® DOORS INC.		SCALE 1:1		REV A	
ANGLE = ±1.0°		PART# 123		SHEET 1 OF 1			

4

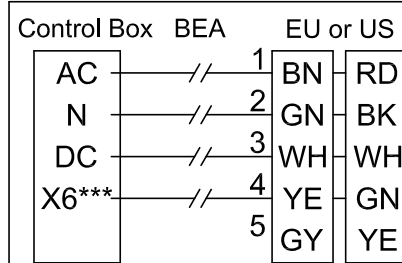
3

2

1

NEXT ASSEMBLY

BEA - Falcon, IS-87, EagleHM



BEA Motion Sensors

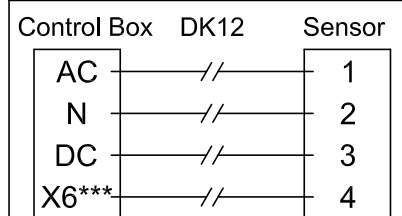
MS Sedco - D38



D38 Motion Sensor

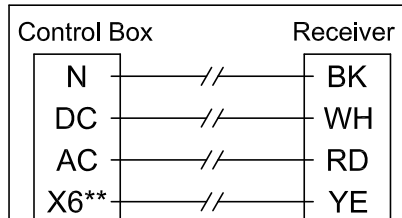
*If switched, green lite will be on, and F2 fuse blown.

BEA - DK-12

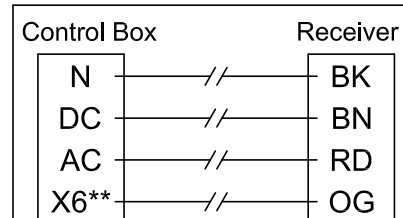


Presence Sensor

RADIO CONTROLS

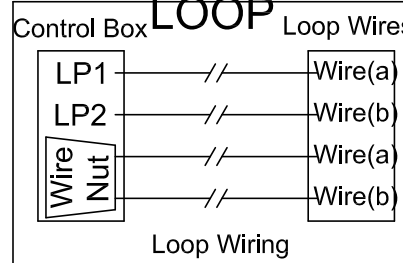


300MHz Radio Control



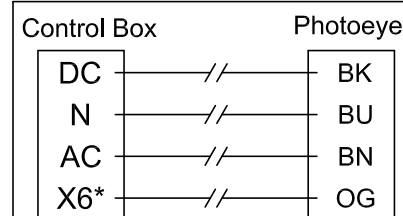
40MHz Radio Control (1, 2 or 4 Button)

INDUCTION LOOP

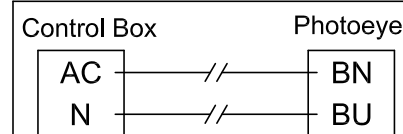


Loop Wiring

PHOTOEYES

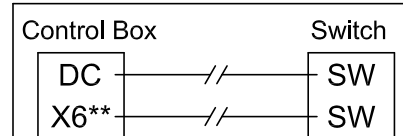


Retroreflective or Thru Beam Receiver



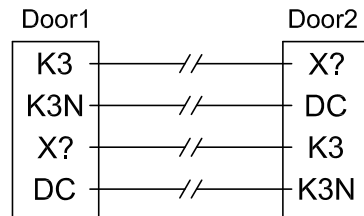
Thru Beam Emitter

PUSHBUTTONS & PULL-CORDS



Wire Each device as shown.

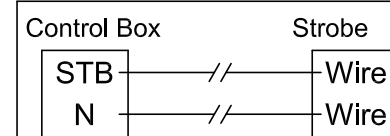
INTERLOCK



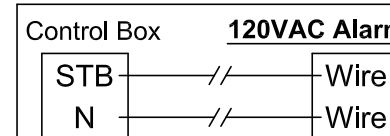
2 Door Standard Interlock

Note: Consult i-COMM manual to see which inputs can be assigned interlock in function. Connect K3 to whichever input is selected to become interlock in. No other devices should be connected to this input. Terminal Must be assigned to Interlock through i-COMM menu on both doors. (i.e. If X3 is to be assigned a function of Interlock Input, the menu ("Input Func X3") should be set to a value of "0")
Output YK3 (K3 relay) should remain at the default setting of "0" on both doors.

STROBES & ALARMS

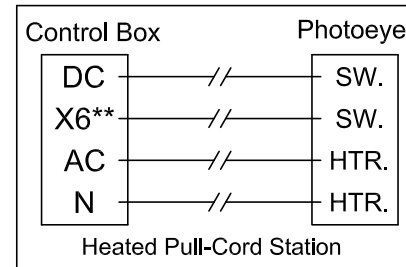


Warning Device Strobe
Additional Relay Required
120VAC U.L. Listed .30 Amp Max



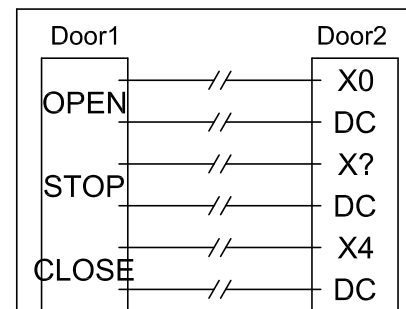
Audible Alarm

HEATED PULL CORDS



Heated Pull-Cord Station

OPEN/CLOSE STOP PUSH BUTTON STATION



Note: Consult i-COMM manual to see which inputs can be assigned STOP function. Connect STOP to whichever input is selected to become STOP. No other devices should be connected to this input. Terminal Must be assigned to STOP through i-COMM menu on both doors. (i.e. If X3 is to be assigned a function of STOP, the menu ("Input Func X3") should be set to a value of "1").

REVISION HISTORY					
REV	DESCRIPTION	ECN	DATE	BY	APPROVED

NOTES: THIS DRAWING ASSUMES INPUT FUNCTIONS ARE SET TO FACTORY DEFAULTS. CONSULT i-COMM MANUAL FOR DETAILS
WARNING: NEVER CONNECT MOTION SENSORS TO A TOGGLE INPUT

Terminals "X6", "X7" are automatic reclose.
Terminals "DC" are DC common for inputs.
Terminals "AC" and "N" are 24VAC terminals.

*Terminal X7 is a default
**For true toggle operation use terminal "X5". (Pull cords, push button or radio controls only.)
***For Reverse hold open connect sensors to UNUSED input. (i.e. X3, X6, or X7 and assign that input a function of "6" in the i-COMM menu. Multiple sensors can be connected in parallel.

Consult i-COMM manual for additional instructions.

ITEM	QTY	PART NO.	DESCRIPTION
PARTS LIST / MATERIAL			

INCH TOLERANCES			DO NOT SCALE DRAWING	
OVER	UP TO	+ / -	DATE	MM-DD-YY
0	0.125	0.005	6/17/2009	6/17/2009
0.125	0.25	0.010		
0.25	1.25	0.020	DRAWN BY	RPB
1.25	5	0.030	CHECKED BY	
5	15	0.040	APPROVED BY	
15	40	0.060	INITIAL ECN	5868
40	80	0.100	DATE ISSUED	6/26/2009
80	-	0.125	REF	
ANGLES	+/- 1 DEG			
FINISH				

RITE-HITE DOORS INC.

TITLE: **SPLITSECOND SERIES ACTIVATION WIRING i-COMM**

SIZE: **B** MODEL NUMBER: **SplitSecond** DWG NO: **7802E007** REV:

SCALE: **8"=1'** PART # SHEET