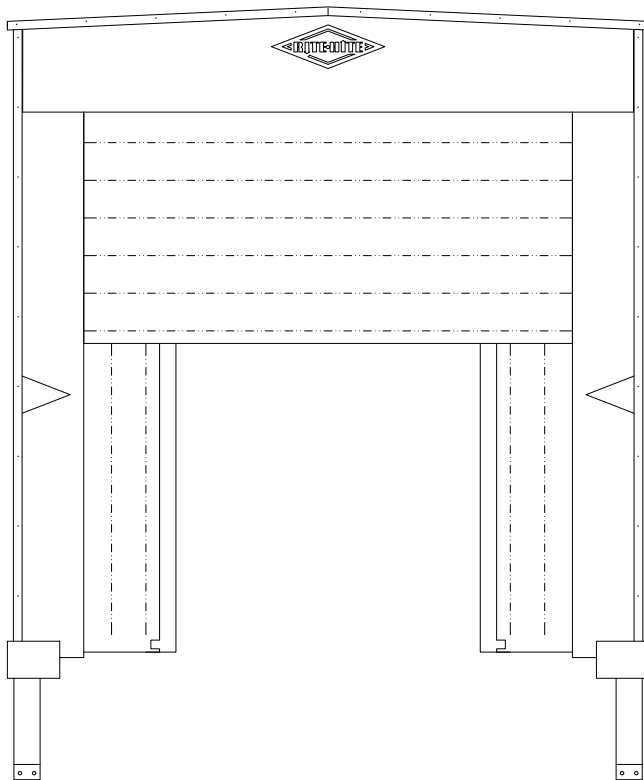


This manual covers models with counterweighted header air bags.



NOTICE TO USER	2
-----------------------------	---

SAFETY	2
---------------------	---

INSTALLATION	
Mounting Methods	3
Mark	4
Steel Bumpers	4
Side Frame to Wall	5
Blower to Head Frame	6
Header to Wall and Sides	7
Head Bag to Guide Rods	8
Air Transfer Tubes	9
Head Bag Counter Weight	10
Draft Pads	11
Wire Blower Motor	12
Spring Tension Adjustment	13
Caulk	13

OPERATION	
Sequence	14

MAINTENANCE	
Planned Maintenance	15

ARCHITECTURAL DRAWING	16
------------------------------------	----

PARTS	
Exploded View	18

WARRANTY	20
-----------------------	----

NOTICE TO USER

Thank you for purchasing a WG735 Uni-Dox Air Inflatable Dock Shelter from Rite-Hite®.

Installation instructions are for standard applications of WG735 Uni-Dox Inflatable Shelter. For non-standard applications, contact your local Rite-Hite sales representative.

Instructions assume installer is outside of building facing loading dock.

Rite-Hite reserves the right to substitute and/or modify parts and drawings (electrical & architectural). If separate prints are included with unit, they supersede the manual.

The Rite-Hite® products in this manual are covered by one or more of the following U.S. patents: 6951084, 6014844, 6044597, 6205721, 6233885, 7146673, 7185463, 7246467, 7287353, 7584517, 7695048, 7757442, 7877831, 7882663, 8042307, 8141305, 8156995, 8307588, 8327587, 8353136, 8458960, 8495838, 8540007, 8752335, 8800086, 8839842, 8887447, 8915029, 8943630, 8991467, 9003724, 9003725, 9010039, 9079713, 9162832, 9170044, 9187271, 9193543 and may be covered by additional pending U.S. and foreign patent applications.

Preparation

Before installation, verify all components were received. Notify Rite-Hite or your local sales representative if parts are missing or damaged.

Maintenance

Remove excess snow from top of header, as needed.

SAFETY

Safety Identifications

DANGER

Indicates a hazardous situation which, if not avoided, will result in death or serious injury.

WARNING

Indicates a hazardous situation which, if not avoided, could result in death or serious injury.

CAUTION

Indicates a hazardous situation which, if not avoided, could result in minor or moderate injury.

NOTICE

Indicates a situation which can cause damage to the equipment, personal property and/or the environment, or cause the equipment to operate improperly.

NOTE: A note is used to inform you of important installation, operation, or maintenance information.

INSTALLATION

Mounting Methods

Concrete Block or Brick Wall

Through bolt fastening is required. Bore a hole through the building wall. Use a 3/8in diameter threaded rod with a washer, nut, and jam nut on each end. Install a back-up plate inside the building wall when the wall will not support the bolt.

Concrete Tilt-Up Walls (Precast)

Use 3/8in lag bolts with expansion shields, 3/8in one piece anchor bolts with expansion collar, or equivalent fastener. If building wall is too thin to effectively hold the lag bolt or anchor bolt, though bolt method of attachment is required.

NOTE: To determine appropriate anchor length, see anchor manufacturer's recommendation for minimum anchor embedment.

Metal Side Building

Through bolt method of attachment is required for this building style. Install a back-up plate that is fastened directly to structural members when it is not possible to fasten directly to structural building members.

Use a 3/8in diameter bolt with a washer and lock nut to fasten the unit to the structural member of the building or to the back-up plates. If necessary, use a 3/8in diameter threaded rod with a washer and lock nut on each end.

INSTALLATION

WARNING

To prevent unauthorized use, barricade work area at dock and ground level while service work is being performed.

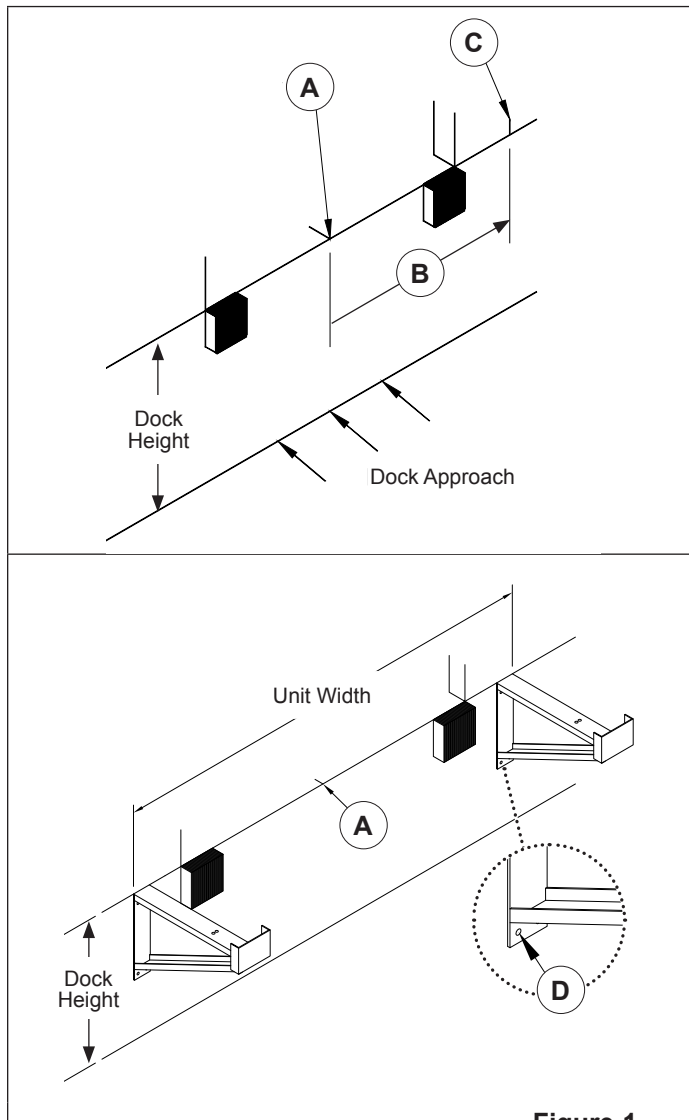


Figure 1

Mark

1. **Centerline of opening at dock level (A):** Measure dock door opening and divide in half.
2. **Unit width (C):** Divide overall width of unit in half (B). Measure out from (A) to mark both left and right of the centerline.

Steel Bumpers

NOTE: Existing bumpers must be mounted according to step 1. If correct, go to **next page**.

1. Line up outside edge of bumper with (C).
2. Mark location of 4 mounting holes from bumper backplate on wall (D).
3. Drill holes and fasten bumper to foundation to concrete foundation using 1/2in x 4in [12mm x 100mm] lag with expansion collar or equivalent fastener.

Repeat for opposite side.

INSTALLATION

Side Frame to Wall

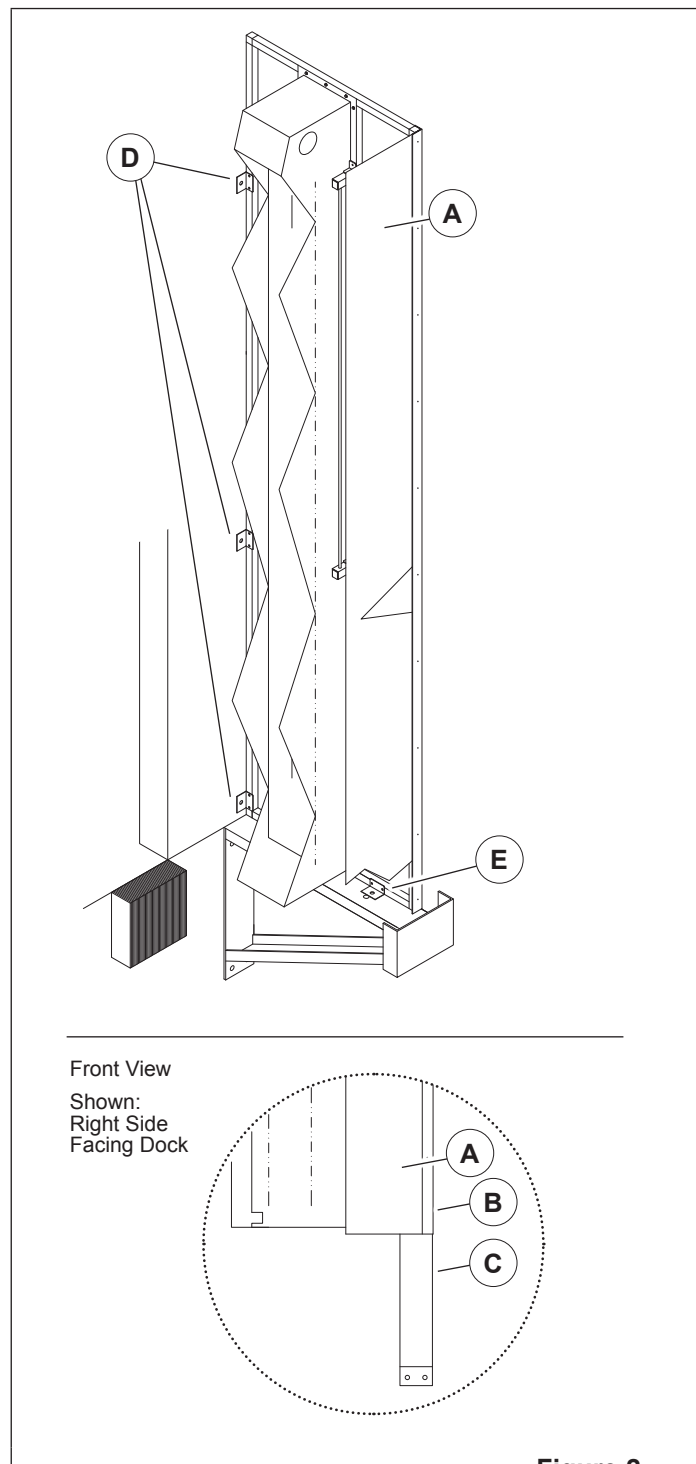


Figure 2

1. Use the *Product Application Form* (PAF) or consult your sales representative for mounting height.

Typically, the bottom of side pad/side frame is mounted at dock height. Some applications require mounting at a different location.

Example: When dock bumpers are mounted above dock height or above the pit floor on vertical leveler applications, it may be required to mount the bottom of side pad/side frame at a height even with the top of bumpers.

NOTE: Remove counterweight before mounting left side. To remove, pull clevis pin out and slide the weight out of guide tube.

2. Position side frame (A) so its outboard edge (B) sits flush with outside edge of mark (C) (Figure 1) / bumper edge (C).
3. Side frames must be plumb top to bottom and at correct overall unit width and height. Bag should face toward inside of unit.
4. Fasten side frame to building wall with minimum of 3 clip brackets (D).
5. Fasten to steel bumper with 1 clip bracket (E).

Repeat for opposite side.

INSTALLATION

Blower to Head Frame

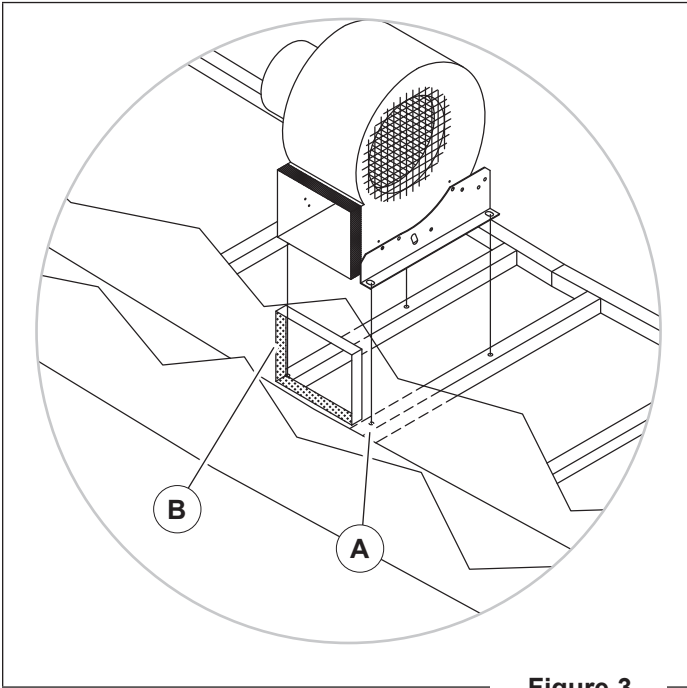


Figure 3

1. Set head frame so fiberglass is facing ground.
2. Locate existing rivet nuts in head frame and use to align blower brackets.
3. Attach blower (A) using provided 1/4-20 x 3/4in bolts, washer, and lock washer using a 7/16in wrench or socket.
4. Align and attach touch and hold fastener (B) from blower opening to head bag.

INSTALLATION

Header to Wall and Sides

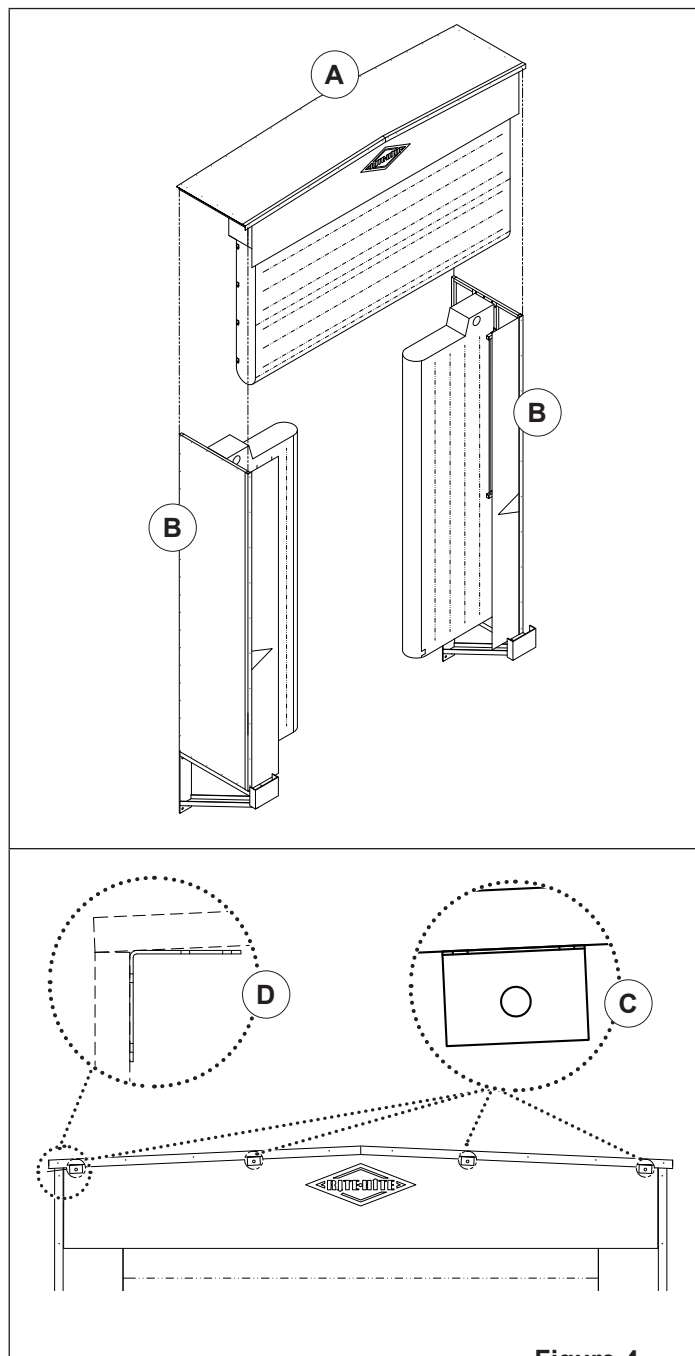


Figure 4

1. Set head frame (A) on top of side frames (B).
2. Position so it is centered over side frames and flush on outside edges.
3. Head bag must be toward front of unit. Aluminum trim angle from sides of head frame will slightly overlap both side frames.
4. Secure head frame to building wall in 4 places (minimum) (C). See ["Mounting Methods" on page 3](#).
5. Pre-drill holes into the L-bracket (D).
6. Use L-bracket to attach front of head frame to front of side frames (D).

INSTALLATION

Head Bag to Guide Rods

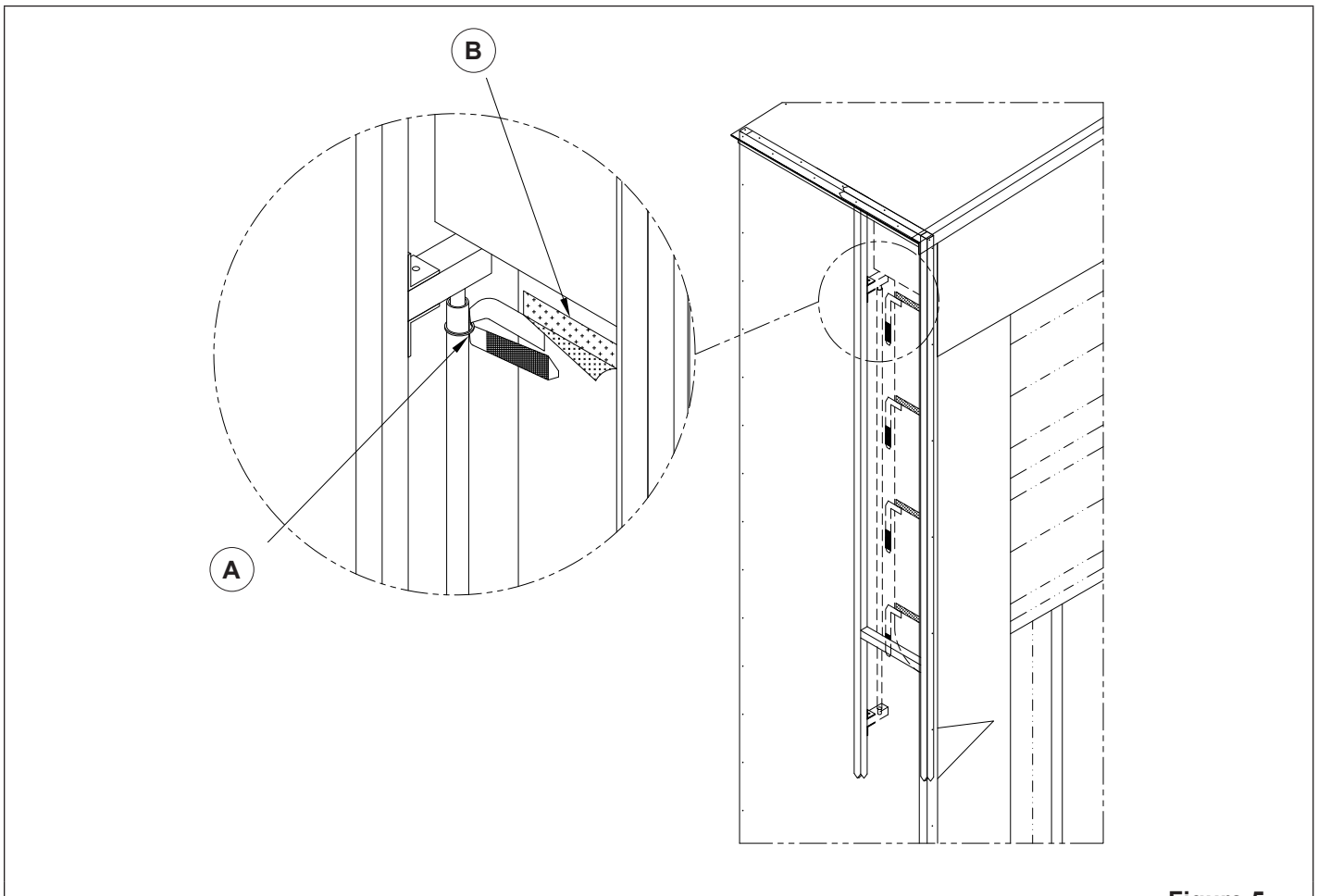


Figure 5

1. Slide bag strap through top of O-ring (A).
2. Cinch strap between touch and hold fastener (B) to secure strap.

Repeat for each strap.

INSTALLATION

Air Transfer Tubes

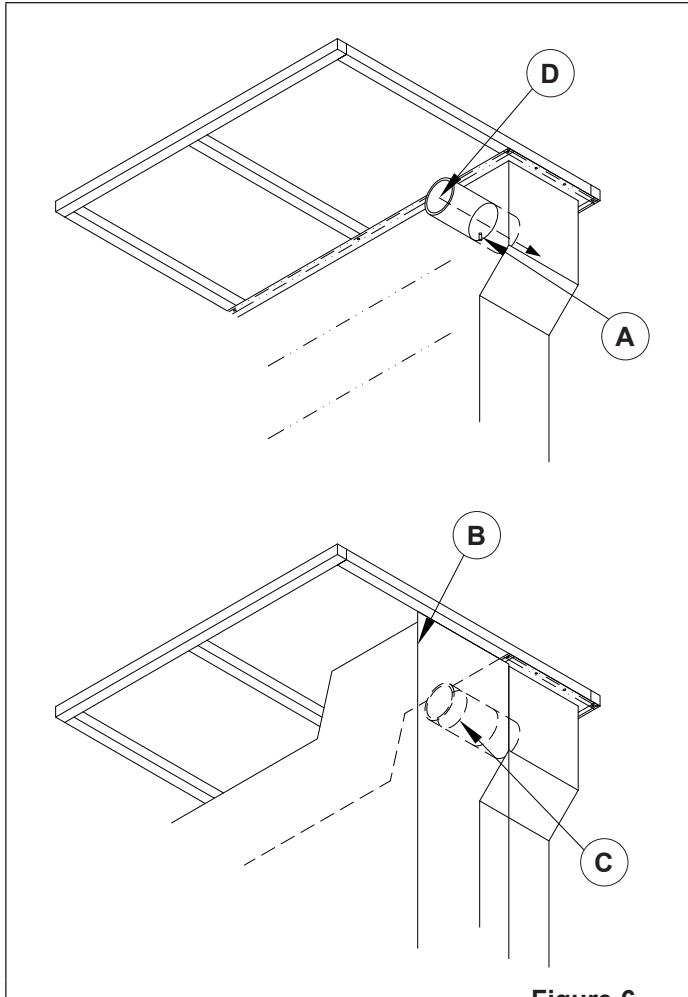


Figure 6

NOTE: Air transfer tubes are shipped already assembled into head bag.

CAUTION

Avoid screw tip (A) in air transfer tube when reaching through side bag and air transfer tube.

1. Open touch and hold fastener at top of side bag (B).
2. Reach one hand from inside of side bag, through hole in side bag (C), and through air transfer tube (D) in head bag.
3. Pull back on air transfer tube while side bag fabric is pulled over tube. Fabric and air transfer tube will fit together tightly.
4. Ensure tube penetrates each bag (side and head) minimum 3in [75mm] to prevent leakage.

INSTALLATION

Head Bag Counter Weight

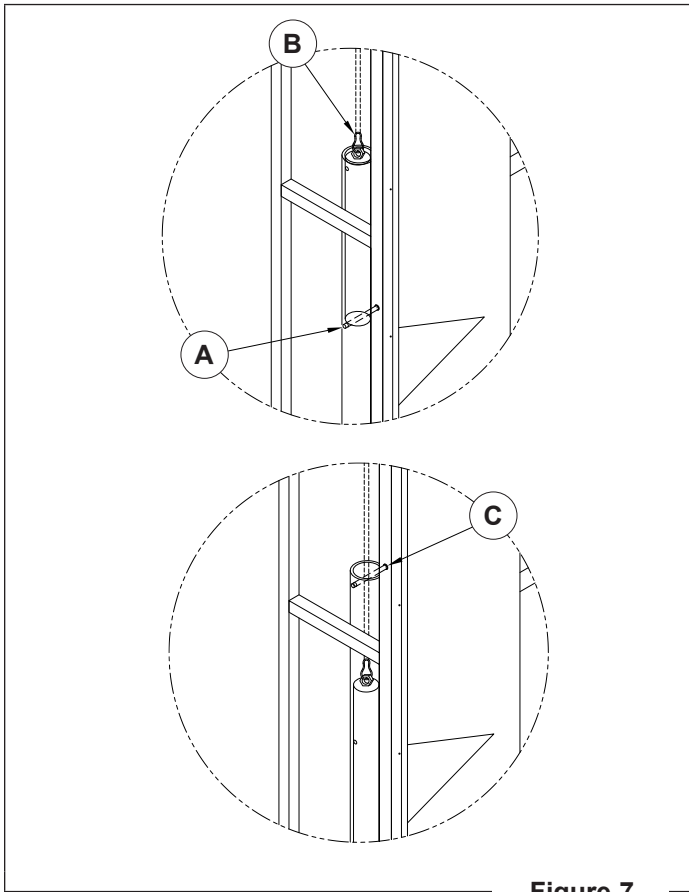


Figure 7

1. Use clevis pin to hold up counterweight while attaching head bag ropes.
 - Set clevis pin to lowest hole location in counterweight guide tube.
 - Set counterweight in tube until it comes to rest on clevis pin (A).
2. Remove any straps on head bag and allow it to hang (full length).
3. Tie off ropes from head bag to snap ring clip so rope is secure when clip is attached to counterweight.

NOTE: DO NOT allow ropes to be twisted or tangled.

4. Attach clip to ring on counterweight.
5. Adjust (B) to straighten head bag. Verify ropes have equal tension to evenly pull up head bag. Remove excess rope.
6. Carefully remove clevis pin and allow counterweight to pull up the head bag. Replace clevis pin in top hole between ropes to prevent tangling (C).

If bag does not retract fully or equally repeat step 5 bag.

INSTALLATION

Draft Pads

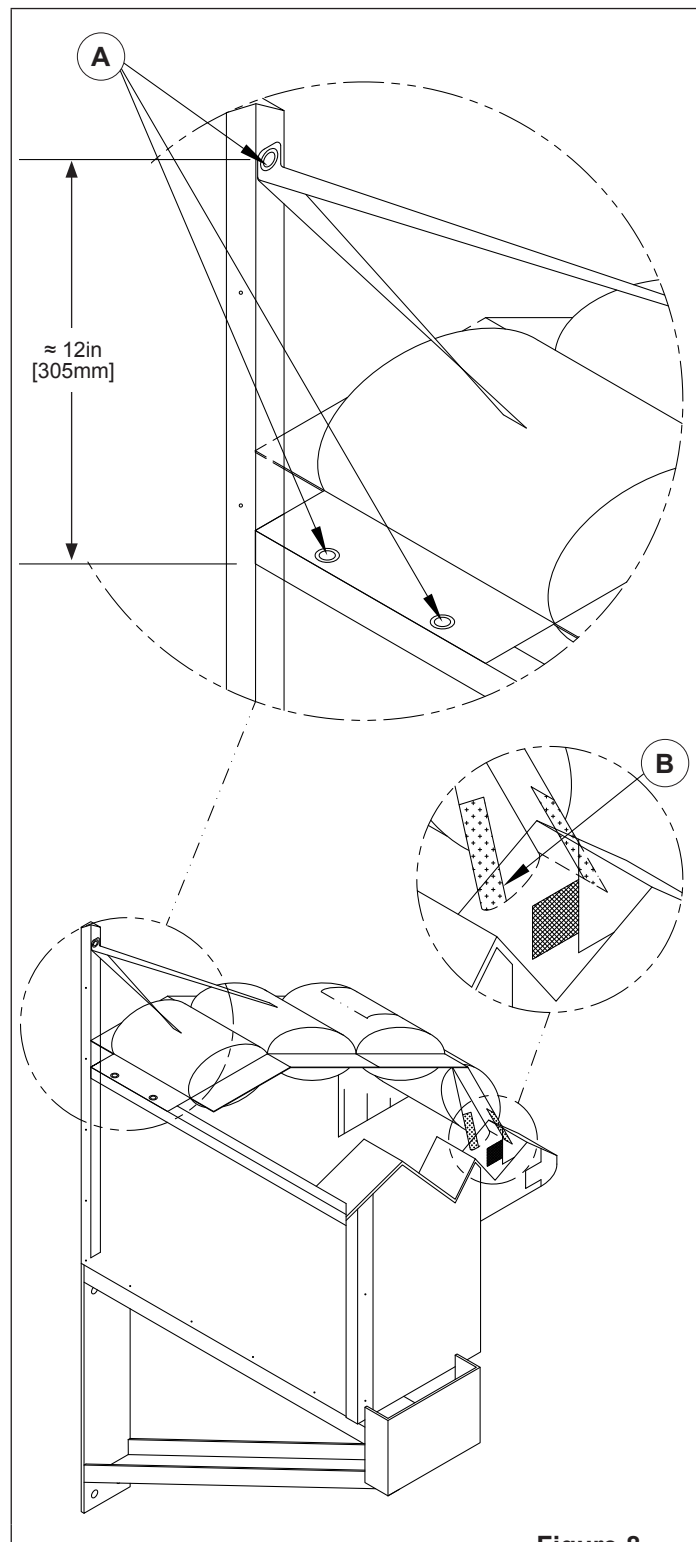


Figure 8

1. Match draft pads to each side of dock opening (frills against wall).

NOTE: Grommet on bungee is attached last so draft pad can be adjusted to proper height.

2. Attach draft pad to frame with screws in each grommet location (A).
3. Attach front of draft pad to front of side bag using sewn on touch and hold fastener (B).

INSTALLATION

Wire Blower Motor

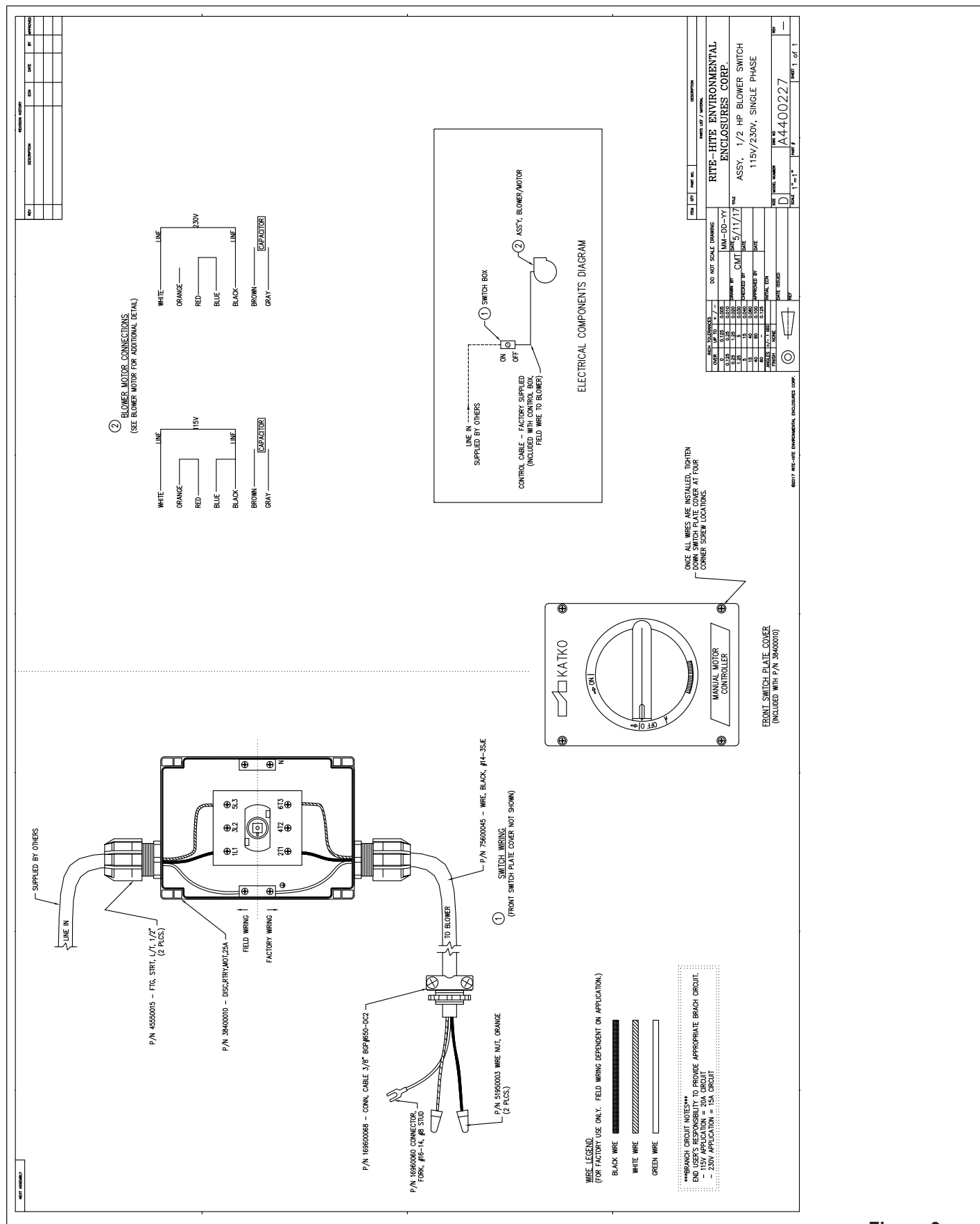


Figure 9

INSTALLATION

Spring Tension Adjustment

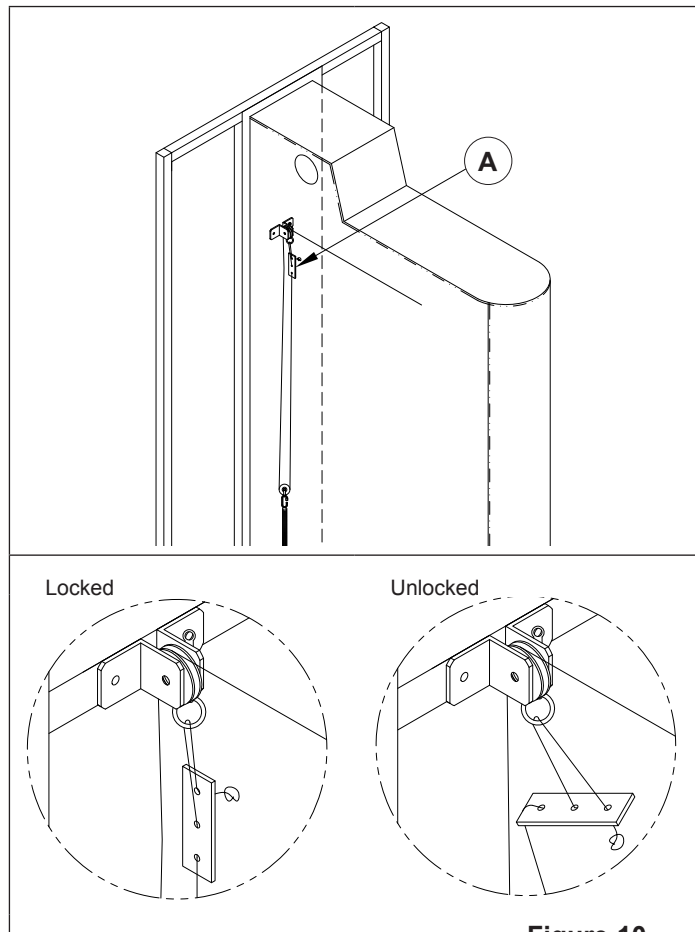


Figure 10

Adjust spring tension if side bags do not deflate or completely inflate.

1. Open touch and hold fastener on back of side bag.
2. Twist rope tensioner (A) to unlocked position.
3. Move up or down to adjust spring tension.
4. Return rope tensioner to locked position.

Repeat for opposite side.

Caulk

Use a commercial grade of flexible caulk. Follow manufacturer's recommendations when applying.

Caulk where unit meets the wall at:

- Top edge of head frame.
- Sides of the side frames.

OPERATION

NOTICE	
	
Enter or exit trucks through shelter when air bags are: <ul style="list-style-type: none">• Deflated.and• Stored.	DO NOT enter or exit trucks through shelter when air bags are: <ul style="list-style-type: none">• Inflated.or• Deflated and hanging into opening and will make contact with truck as it enters or exits dock shelter.
Failure to comply will void warranty and cause damage to unit.	

Sequence

Truck Entering

1. With building door closed, truck backs into position at the dock.
2. Blower motor is energized, inflating WG735 Uni-Dox air bags around perimeter of truck
3. Door is opened to access truck.

Truck Exiting

1. Building door is closed.
2. Blower motor is de-energized, allowing air bags to deflate, retract, and store behind storage curtains.
3. Air bags are completely stored and truck exits dock.

MAINTENANCE

Planned Maintenance

#	EVERY		INSPECT, CORRECT:
	WEEK OF 1ST MONTH	6 MONTHS	
1	✓	✓	Side bags for sagging, uneven retraction during inflate and deflate.
2	✓	✓	Head bag for uneven retraction during inflate and deflate.
3	✓	✓	All bags for full retraction (completely behind storage curtains).
4	✓	✓	Draft pads for full retraction.
5	✓	✓	Touch and hold fasteners are attached and secure.
6	✓	✓	Blower free from obstructions.
7	–	✓	Remove excess snow or debris from top of unit.
8	–	✓	Mounting hardware (nuts, bolts, brackets, framing, and bumpers) is tight and fastened securely.
9	–	✓	Pulleys, ropes, and springs in the side bag. Replace as needed.
10	–	✓	Pulleys and rope in head bag. Replace as needed.
11	–	✓	Bags for punctures or tears.

ARCHITECTURAL DRAWING

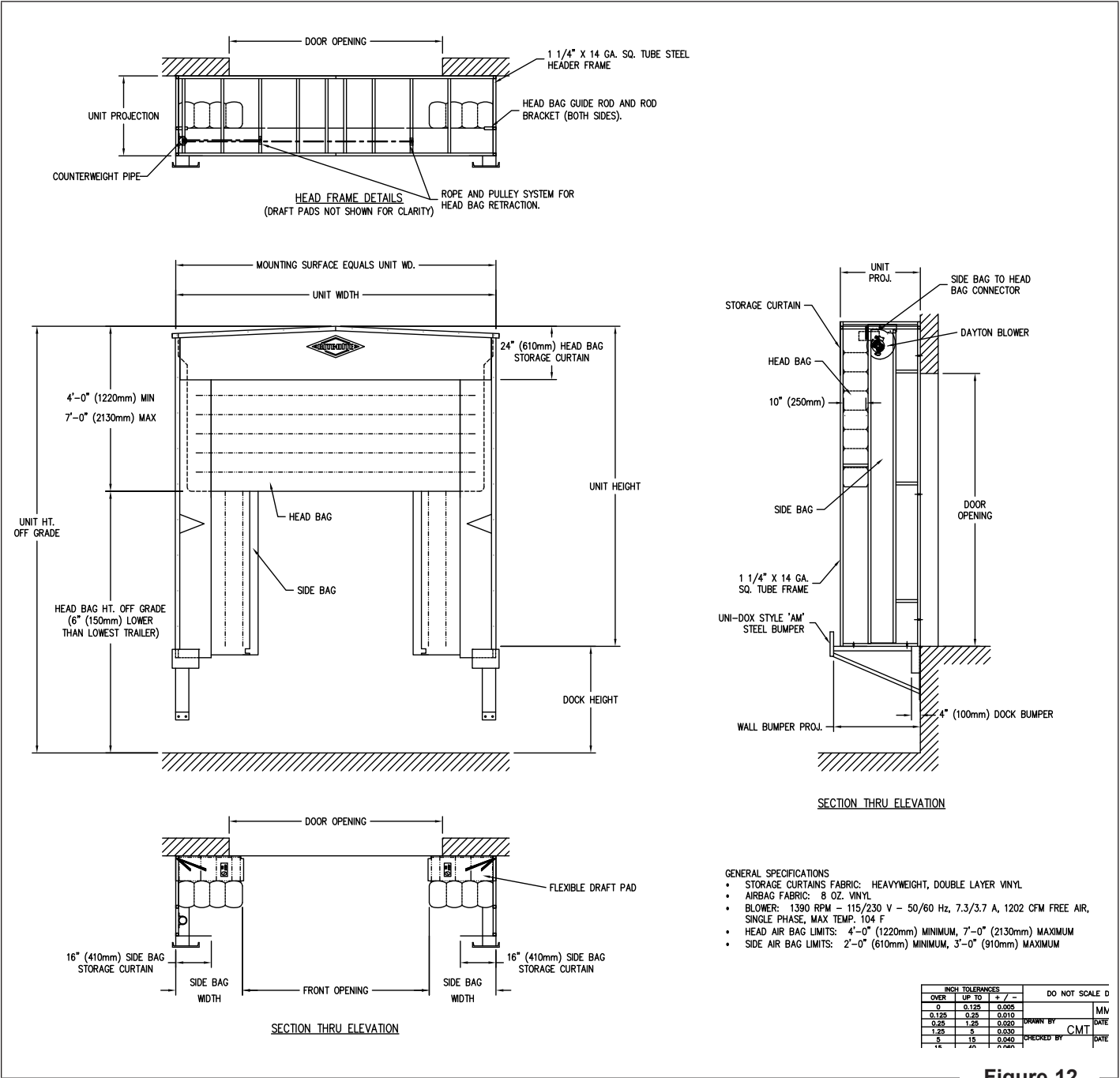
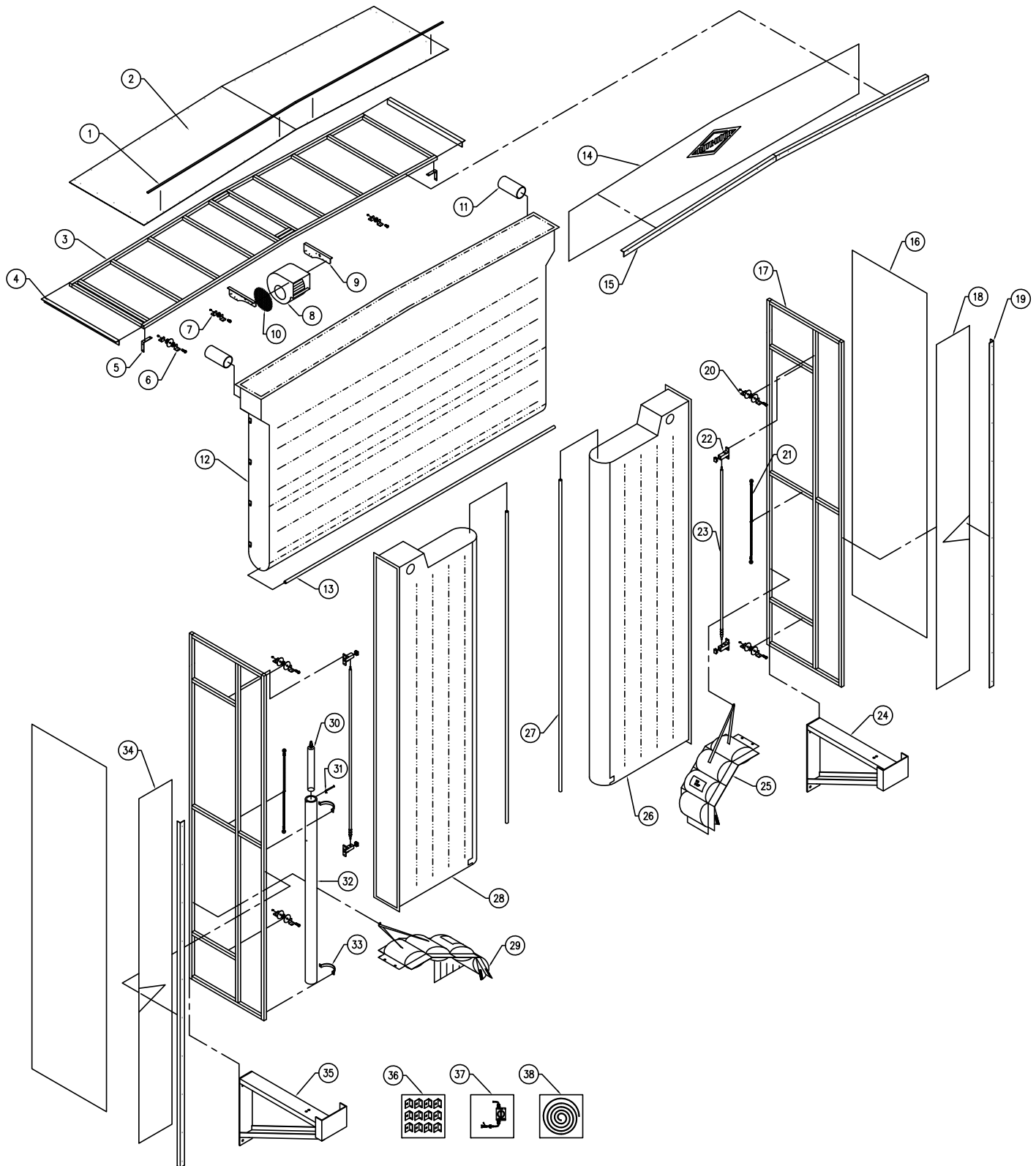


Figure 12

This image shows a single sheet of white paper with horizontal ruling lines. The lines are evenly spaced and run across the width of the page. There are no margins, text, or other markings on the paper.

PARTS

Exploded View



PARTS

Exploded View *Continued*

#	DESCRIPTION
1	1/2in X 3/4in Foam Tape
2	Fiberglass Cover - Header
3	Head Frame
4	Trim Angle - Header Sides
5	4in X 4in L-Bracket
6	Double Pulley Assembly
7	Single Pulley Assembly - Header
8	Blower
9	Blower Bracket (Pair)
10	10" Mesh Blower Cage
11	PVC Air Transfer Tubes
12	Head Bag
13	Aluminum Rod - Header
14	Storage Curtain - Header
15	Trim Angle - Header Front
16	Fiberglass Cover - Sides
17	Side Frame
18	Storage Curtain - Right
19	Trim Angle - Side
20	Single Pulley Assembly - Sides
21	Spring Pulley Assembly
22	Guide Rod Bracket Assembly
23	1/2in Steel Guide Rod
24	Bumper - Right
25	Draft Pad - Right
26	Side Bag - Right
27	Aluminum Rod - Sides
28	Side Bag - Left
29	Draft Pad - Left
30	Counterweight
31	3/8in X 4in Clevis Pin
32	Counterweight Guide Tube
33	Pipe Clamp
34	Storage Curtain - Left
35	Bumper - Left
36	1-1/2in x 2in x 3in Clip Bracket
37	Control Switch
38	Nylon Ropes (Sides and Head)

*Not Shown

Rite-Hite Company, LLC and its affiliates (collectively "Rite-Hite") warrant that the Product sold to the Owner will be free of defects in design, materials and workmanship (ordinary wear and tear excepted) for the periods set forth below ("Limited Warranty").

One (1) Year on all mechanical and electrical parts.
One (1) Year labor, based on approved travel and labor repair times.

REMEDIES

Parts: RITE-HITE's obligations under this Limited Warranty are limited to repairing or replacing, at Rite-Hite's option, any part which is determined by Rite-Hite to be defective during the applicable warranty period. Such repair or replacement shall be Rite-Hite's sole obligation and the Owner's exclusive remedy under this Limited Warranty.

Labor: Rite-Hite will provide warranty service without charge for labor per the specified warranty period. Thereafter, a charge will apply to any repair or replacement under this Limited Warranty.

CLAIMS Claims under this Limited Warranty must be made (i) within 30 (thirty) days after discovery and (ii) prior to expiration of the applicable warranty period. Warranty period commences on the date of shipment. Claims shall be made in writing or by contacting the representative from whom the Product was purchased directly. Owner must allow Rite-Hite or its agent, a reasonable opportunity to inspect any Product claimed to be defective and shall, at Rite-Hite's option, either (x) grant Rite-Hite or its agent access to Owner's premises for the purpose of repairing or replacing the Product or (y) return of the Product to the Rite-Hite, F.O.B. Rite-Hite's factory.

NOT WARRANTED Rite-Hite does not warrant against and is not responsible for wear items such as fuses, batteries, bulbs, vision and seals. No implied warranty shall be deemed to cover damages that result directly or indirectly from: (i) the unauthorized modification or repair of the Product, (ii) damage due to misuse, neglect, accident, failure to provide necessary maintenance, or normal wear and tear of the Product, (iii) failure to follow Rite-Hite's instructions for installation, failure to operate the Product within the Product's rated capacities and/or specified design parameters, or failure to properly maintain the Product, (iv) use of the Product in a manner that is inconsistent with Rite-Hite's guidelines or local building codes, (v) movement, settling, distortion, or collapse of the ground, or of improvements to which the Products are affixed, (vi) fire, flood, earthquake, elements of nature or acts of God, riots, civil disorder, war, or any other cause beyond the reasonable control of Rite-Hite, (vii) improper handling, storage, abuse, or neglect of the Product by Owner or by any third party.

DISCLAIMERS THIS LIMITED WARRANTY IS EXCLUSIVE AND IN LIEU OF ALL OTHER REPRESENTATIONS AND WARRANTIES, EXPRESS OR IMPLIED, AND RITE-HITE EXPRESSLY DISCLAIMS AND EXCLUDES ANY IMPLIED WARRANTIES OF MERCHANTABILITY OR FITNESS FOR PURPOSE. RITE-HITE SHALL NOT BE SUBJECT TO ANY OTHER OBLIGATIONS OR LIABILITIES, WHETHER ARISING OUT OF BREACH OF CONTRACT, WARRANTY, TORT (INCLUDING NEGLIGENCE AND STRICT LIABILITY) OR OTHER THEORIES OF LAW, WITH RESPECT TO THE PRODUCTS SOLD OR SERVICES RENDERED BY RITE-HITE, OR ANY UNDERTAKINGS, ACTS, OR OMISSIONS RELATING THERETO.

LIMITATION OF LIABILITY IN NO EVENT SHALL RITE-HITE BE RESPONSIBLE FOR, OR LIABLE TO ANYONE FOR, SPECIAL, INDIRECT, COLLATERAL, PUNITIVE, INCIDENTAL, OR CONSEQUENTIAL DAMAGES, EVEN IF RITE-HITE HAS BEEN ADVISED OF THE POSSIBILITY OF SUCH DAMAGES. Such excluded damages include, but are not limited to, personal injury, damage to property, loss of goodwill, loss of profits, loss of use, cost of cover with any substitute product, interruption of business, or other similar indirect financial loss.

1770419

GLOBAL SALES & SERVICE *Representatives in All Major Cities*

RITE-HITE WORLD HEADQUARTERS

8900 N. Arbon Drive
P.O. Box 245020
Milwaukee, Wisconsin 53224

☎ 414-355-2600
U.S. Only: 1-800-456-0600

RITE-HITE CHINA

First Floor, Building #3,
558 Tongxie Road,
Changning District
Shanghai 200335, China

☎ +86-21-6237-6333

RITE-HITE LATIN AMERICA

Alameda Lorena, 800 - Conj. 401/402
- Jardim Paulista
São Paulo/SP, CEP 01424- Brazil

☎ 011-55-11-3527-9590

RITE-HITE GMBH

Carl-Zeiss-Strasse 3
34471 Volkmarsen, Germany

☎ +49-5693 98700