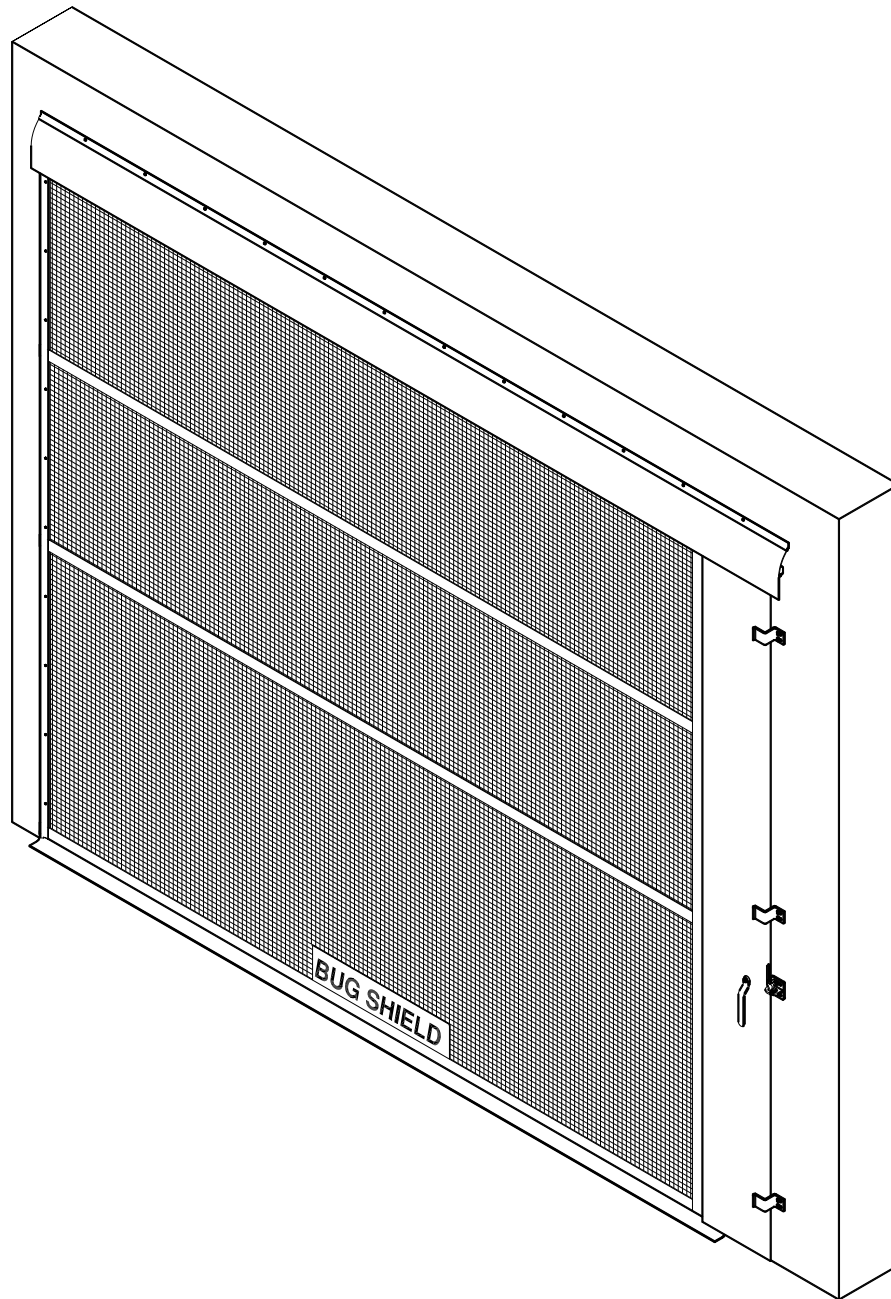


BUGSHIELD™

SLIDING SCREEN DOOR

MODEL 5600



This manual to remain with the unit:
Date Installed: _____



RITE·HITE®
ALWAYS LOOKING AHEAD



This Manual Covers Serial No. 07958 and Up.

PRODUCT INTRODUCTION

TABLE OF CONTENTS

MAINTENANCE/RECOMMENDED TOOL LIST	2
INSTALLATION INSTRUCTIONS	3
CATCH/LOCK DOWN/SPRING ADJUSTMENT	5
STRAPS, SEALS AND SWEEP INSTALLATION	6
TROUBLESHOOTING / MAINTENANCE	8
SERVICE PARTS	9
ARCHITECTURAL DRAWING	10
WARRANTY	last page

NOTICE TO USER

Our mission is to “Improve Industrial Safety, Security and Productivity Worldwide through Quality and Innovation.”

The door that you will be installing is a manual operated sliding door system. The following is basic information that you should review before beginning the installation.

Thank you for purchasing the BUGSHIELD™ Sliding Screen door from **RITE-HITE DOORS, INC.** The BUGSHIELD is a screen door designed to help keep birds and insects from entering through exterior doorways and loading docks. The dynamic sliding feature allows fresh air and daylight while providing excellent environmental protection.

This owners manual **MUST** be stored near the door.

RITE-HITE DOORS, INC. reserves the right to modify the electrical and architectural drawings in this manual as well as the actual parts used on this product are subject to manufacturing changes and may be different than shown in this manual. Due to unique circumstances with varying requirements, separate prints may be included with the unit.

This manual should be thoroughly read and understood before beginning the installation, operation or servicing of this door.

Refer to partslist manual for exploded views and part numbers.

The information contained in this manual will allow you to operate and maintain the door in a manner which will insure maximum life and trouble free operation. The serial # label for your door is located on the side of the track.

Your local **RITE-HITE DOORS, INC.** Representative provides the Planned Maintenance Program (P.M.P.) which can be fitted to your specific operation. If any procedures for the installation, operation or maintenance of the BUGSHIELD door have been left out of this manual or are not complete, contact **RITE-HITE DOORS, INC.** Technical Support at 1-563-589-2722.

SPECIAL FEATURES

- Airflow-40% standard, up to 55% with vinyl-coated polyester mesh.
- Heavy-duty industrial materials
- Variety of mesh colors available, including custom colors.
- Water-resistant Hypalon™ seals at nose, top and bottom.

RECOMMENDED TOOL LIST

- Utility Knife
- 6' Carpenters Level
- 25' Tape Measure
- 1/2" Open end Wrench
- 5/16" or 3/8" Self-Tapping driver
- 5/16" or 3/8" x 1" to 1 1/2" Self tapping screws with washers

INSTALLATION INSTRUCTIONS

CAUTION !!!

DO NOT try to operate a Sliding Bugshield under high winds, as the door may not be able to be controlled. If this procedure is ignored the possibility of personal injury or product damage may occur.

It is important to verify the following basic information before starting with the installation.

TO PREVENT DAMAGE TO CONTENTS, STORE DRY BETWEEN 40° AND 80° F.

NOTE: Reference right or left from the side that the door is mounted on.
Which ever side the curtain is stored on, determines whether it is a Right-Hand or Left-Hand door. For example, a door that opens toward the right and stores on the right is a right hand door.

1. Alternate dimensions in brackets are in [millimeters].
2. Make sure that you are working at the correct location and that you have any required work permits.
3. Inspect the site to make sure that there are no overhead obstructions (sprinkler pipes, HVAC systems, electrical supply lines, etc.) that might interfere with the installation.
4. Detour material handling equipment during the installation.
5. Move the door crate as close to the opening as possible.
6. In the case of multiple doors being installed, it is imperative to install the proper components with the matching door unit. The serial # for your door is on a label located on the side of the lower track.
7. Install optional equipment after verifying door operation.

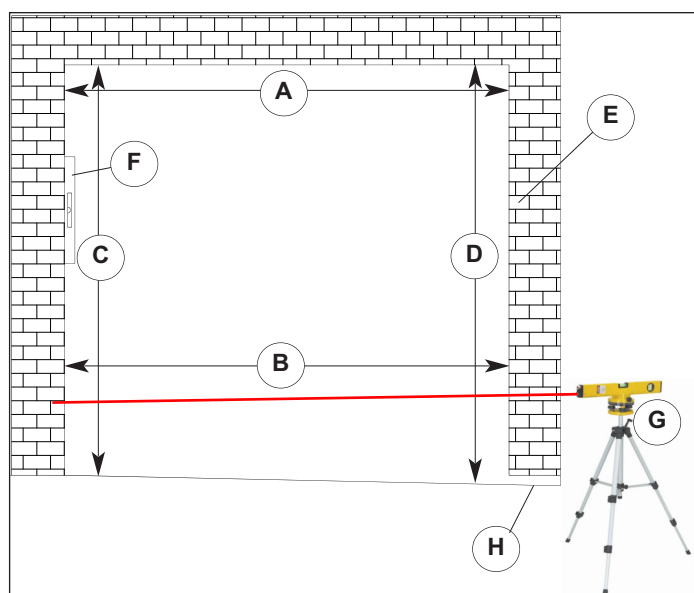


Figure 3.1

DOOR JAMB

1. Measure Door Opening Width at the top (A).
2. Measure Door Opening Width at the floor (B).
3. Measure Door Opening Height at left side (C).
4. Measure Door Opening Height at right side (D).
5. Dimensions from Steps 1 - 4 should be within $\pm 1/2"$ [13] of the dimensions listed on the serial number label. If the measurements do not agree, STOP! Contact your **RITE-HITE DOORS, INC.** representative.
6. Surface MUST be flat, smooth and collinear with opposite side (E).
7. Using a 6' [1829] carpenter's level (F), verify that the door jambs and header are plumb and perpendicular.
8. Using a laser level (G), place a mark where the laser is sighted on each side of the jamb to determine if the floor is level. Measure both sides from floor to the mark and if the floor is not level to within $1/8"$ [3], shim under the track that will be located on the "Low Side" (H) (greatest measurement) of the door opening.

For space clearance requirements, see Architectural drawing on [Pages 10 & 11](#).

INSTALLATION INSTRUCTIONS

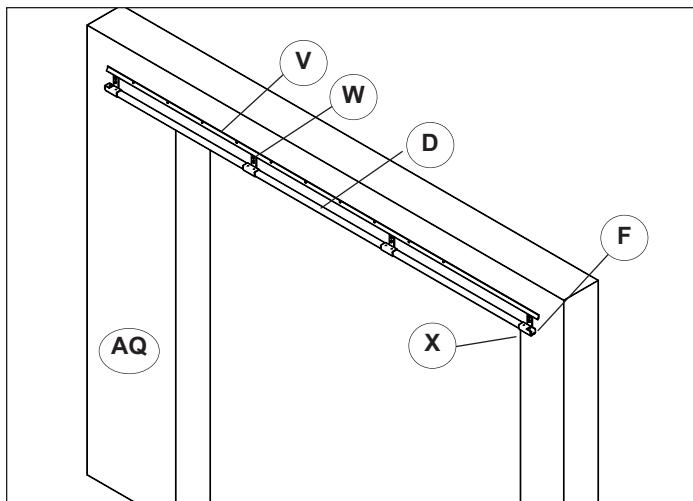


Figure 4.1

TRACK INSTALLATION

1. Install the track (D) by locating the bottom of the track hanger brackets (W) at the top of the door jamb or Ordered Door Height. Trolleys will hang approximately 1" [51] into the opening, **Figures 4.1 & 6.2**.
2. On non store side (X), locate inside edge of bracket, 5" [127] past the door opening.

3. Space all track hanger brackets, approximately 4' [1219] apart and mount the storage side (AQ) bracket flush with end of track. If the track is supplied in more than one piece, locate one bracket at each splice.
4. Using both slots provided in the bracket, securely fasten using 1/4" to 3/8" [6 - 10] hardware.
5. Make sure the track is level, before tightening hardware.
6. Brackets may be welded, as long as track is level.

CURTAIN FRAME / TROLLEY INSTALLATION

1. Stand the curtain frame (A) vertically on the storage side of the door. The curtain frame (B) will be the first part of the assembly to feed into the track (D).
2. Slide the first and second pre-attached trolleys (C) into the track, so the curtain frame is hanging from the track.
3. Install the rest of the trolleys (E), by hooking the trolley into the grommet of the curtain with the hook facing toward the back of the curtain and slide into the track.

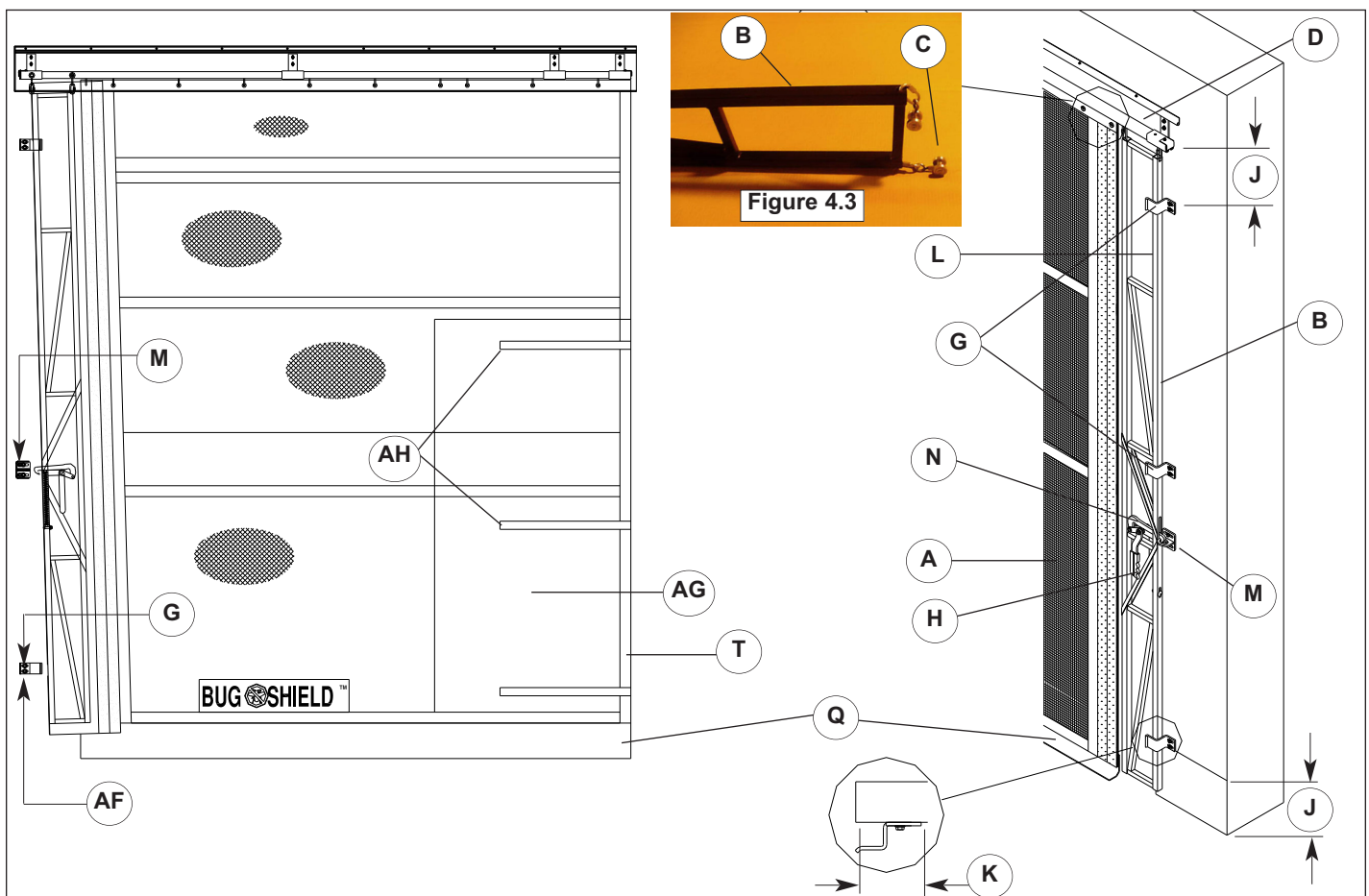


Figure 4.2

CATCH/LOCK DOWN/SPRING ADJUSTMENT

END STOPS & “Z” BRACKET INSTALLATION

1. Provided with the door are two end stops (F), fasten to the end of the track to keep the curtain trolleys from coming out of the track, **Figure 4.4**.
2. Position the “L” shaped end stops, with the hole on top of the track and using the #12 x 3/4” [19] self tapping screws provided, fasten the bracket to the track.

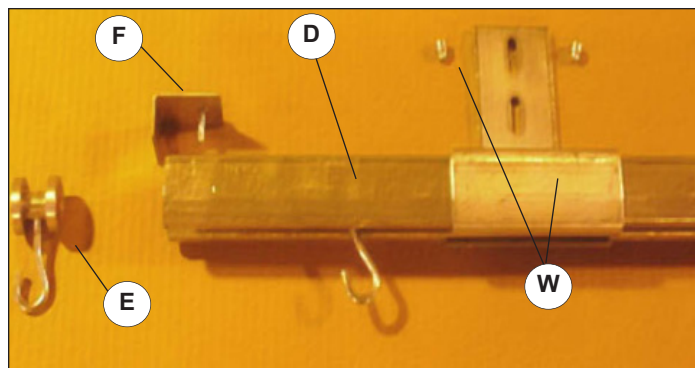


Figure 4.4

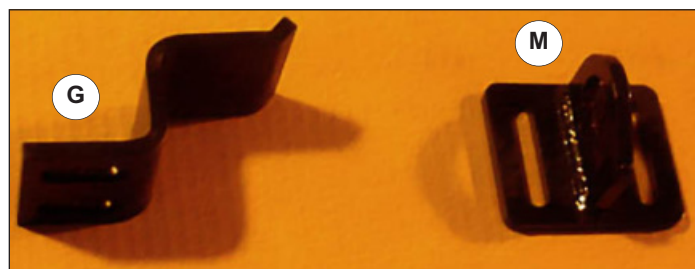


Figure 4.5

3. In order to keep the nose seal (L) tight against the jamb of the door, you will need to install the “Z” brackets (G).
4. Pulling the door closed, position it such that the handle (H) on the back side does not hit or catch on the back side of the jamb.
5. Position one “Z” bracket 12” [305] (J) from the floor and one bracket 12” [305] (J) from the top of the jamb. The brackets should be located approximately 4 1/2” [114] (K) from the edge of the jamb to the back side of the bracket, **Figure 4.2**.
6. Equally space remaining “Z” brackets, such that nose seal is secured tightly to the jamb.
7. If the nose seal does not engage (AF) the “Z” brackets, loosen pressure strap at the bottom to allow curtain nose seal to meet the “Z” bracket, or adjust the lower “Z” bracket and catch bracket

CATCH INSTALLATION

1. To locate the catch bracket (M), make sure the nose seal (L) is tight up against the “Z” brackets (G).
2. Place so handle (H) is facing down and push down

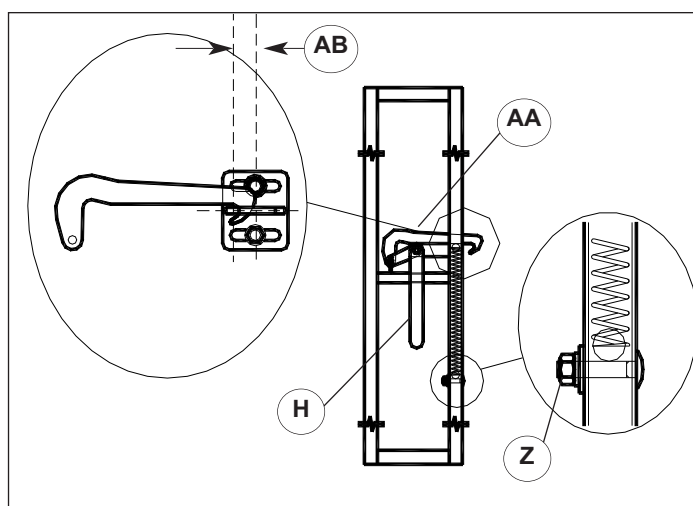


Figure 4.6

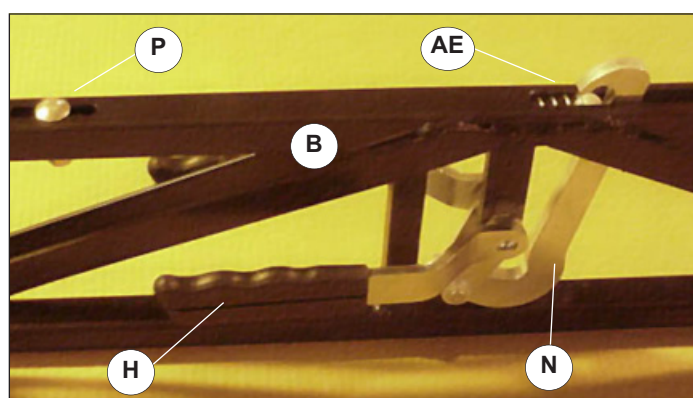


Figure 4.7

on the end of the hook (N) so it is horizontally level and mark a spot in the center of the hook.

3. From that “mark”, measure over 1” [25] away from the door opening. Mark a 6” [152] vertical line, this is where the center of the slots on the catch will be located, **Figures 4.5 & 4.6**.
4. Test the lock down mechanism, as the “Z” brackets may need to be adjusted right or left.
5. After bracket is seated properly, tighten down securely as it may move from high winds or incorrect latching procedure.

LOCK DOWN SPRING (AE) ADJUSTMENT

1. If the hook does not pop free of the catch when released, it will need to be adjusted upward. Push down on hook so it is level. (AA) If the hook does not feed automatically into the catch it will need to be adjusted downward, **Figures 4.6 & 4.7**.
2. To adjust, remove hook from catch.
3. Remove nose seal from bottom to just above latch.
4. If hook does not pop free of catch when released, loosen 5/16” [8] nut using a 1/2” [13] wrench, raise carriage bolt (P) up and tighten, if hook does not

SWEEP, SEALS AND STRAPS INSTALLATION

feed into the catch, loosen nut, lower carriage bolt and tighten (Z).

- 1" [51] from center of hook to slots on catch bracket (AB).
- Test for proper door operation, reattach the nose seal.

FLOOR SWEEP INSTALLATION

- The floor sweep (Q) provided is 8" [203] high and the same length as the curtain. Sweep should curl on floor (S).
- Trim the sweep for height and length as necessary, depending on the grade of the floor. The sweep should be left as high as possible, as it will lift up off the floor (R) during windy conditions, **Figure 6.1**.

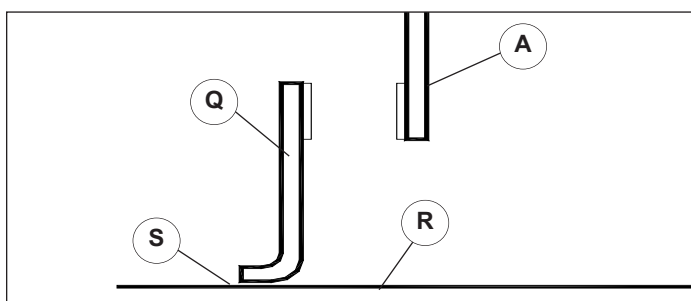


Figure 6.1

LINTEL SEAL

- Lintel seal (R) comes pre-attached to the trailer rail (V).
- Position track approximately 6" [152] (AC) above the door jamb so it clears the track hanger brackets. 6" [152] allows for handle travel and curtain storage. Fasten the track approximately every 18" [457] (Y), **Figure 6.2**. Lintel seal hangs into doorway (U). Hardware supplied by others.

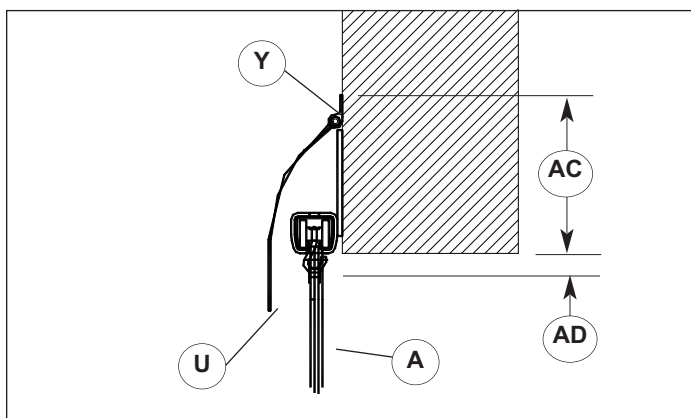


Figure 6.2

PRESSURE STRAP INSTALLATION

- Provided is a pressure strap (T) that needs to be fastened to the wall to secure the screen material.
- Rotate the handle up to unlock the hook, but leave it hooked onto the catch.
- When positioning the curtain to be strapped down, make sure that the front long storage straps (AH) are in front of the curtain, one short strap is between the curtain and storage cover, and the other short strap is behind the storage cover, **Figure 6.3**.
- Also pull excess slack out of the curtain to take out most of the wrinkles. The remaining wrinkles will come out once the pressure strap is installed and the door is in the locked position.
- Place the pressure strap on the wall, with the curtain between the wall and the pressure strap. Start securing with the first fastener at the same height as the catch. Now rotate the handle down to secure the latch. Check if there is too much or too little tension on the curtain. Unlatch and proceed to place fasteners every 18" [457] or less, as they are needed, making sure to keep wrinkles out of the curtain.
- Do not force latch to lock, if the top or bottom of the nose seal is too tight, adjust the "Z" brackets in or out, depending on which brackets the nose seal is hitting first. If all brackets are loose or tight, then adjust the catch. Another option is to tighten or loosen the curtain in the perspective areas at the pressure strap.

CURTAIN STORAGE STRAPS

- Open door and fold out storage cover (AG).
- Take the short straps (AJ) from the back and tie with the long straps from the front.
- The long straps are in the front and the short ones are in the back, **Figure 6.3**.
- When the storage cover is not in use, tie it in place using the two short straps.

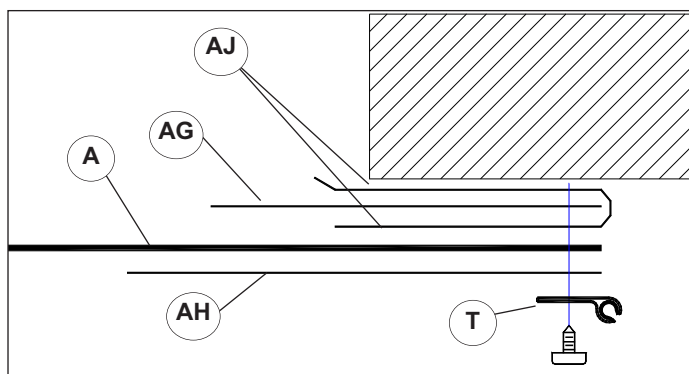


Figure 6.3

IN-JAMB INSTALLATION

1. Install a 5" [127] piece of blocking (AK) and hardware (AL) (supplied by others) onto the jamb as shown in, **Figure 7.1**. The front face of the blocking should be in the center of the jamb.
2. Slide hanger brackets (W) onto the roller track. Place the first bracket at approximately 7" [178] (AM) from the end of the track and install the others approximately 4' [1219] (AN) apart, **Figures 4.1 & 7.1**.
3. Lift track with all the brackets up to the header and mount with fasteners supplied by others. Leave a minimum of a 2" [51] (AP) space at the front to install rollers.
4. Install curtain rollers into track through the spacing at the front of the jamb, **Figures 7.1 & 7.2**.
5. Attach curtain to the jamb using the pressure plate and fasteners supplied by others, **Figure 7.2**.
6. Install "Z" brackets and latch catch onto blocking as shown in, **Figure 7.4**.

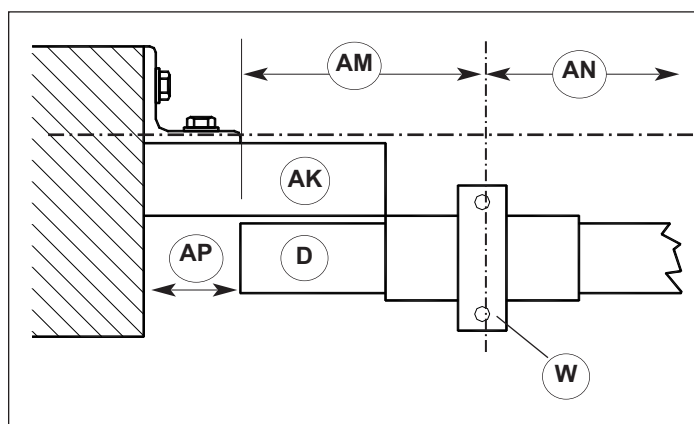


Figure 7.1

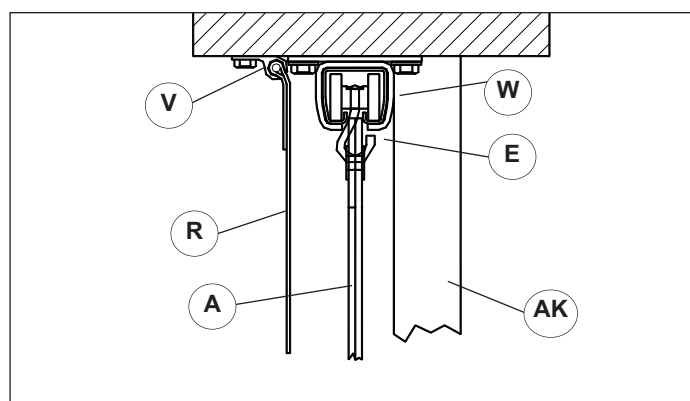


Figure 7.2

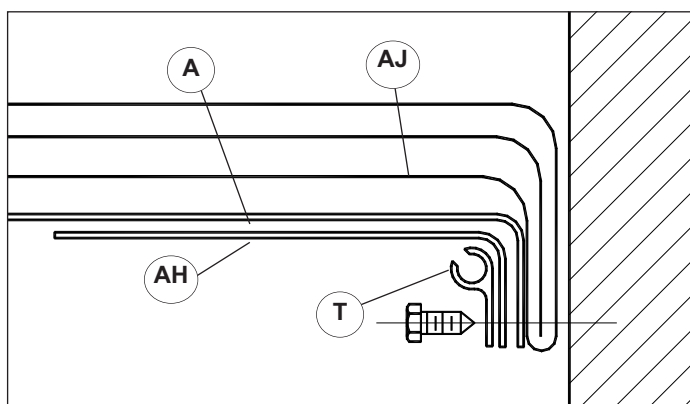


Figure 7.3

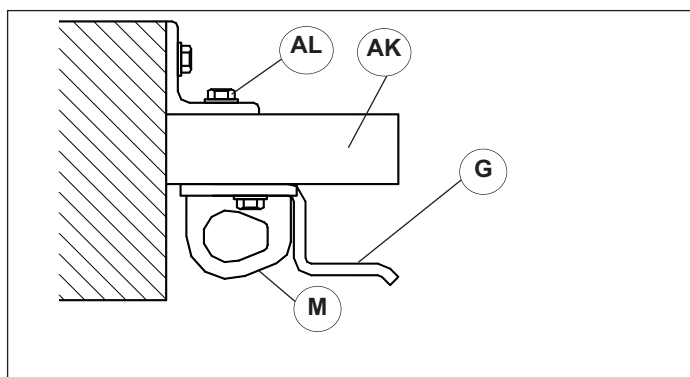


Figure 7.4

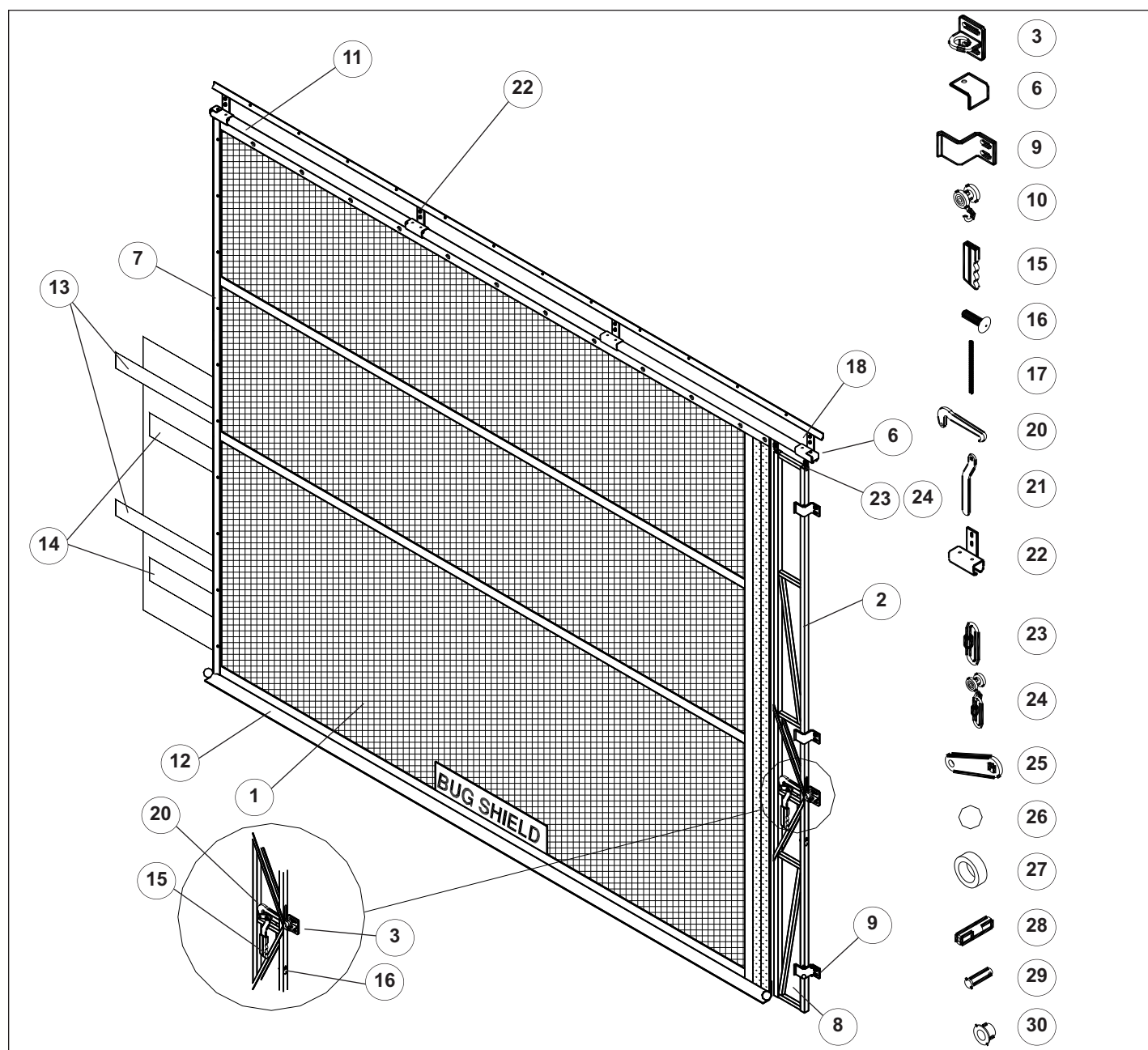
TROUBLESHOOTING / MAINTENANCE

DEFINITION	TRROUBLESHOOTING
Lintel Seal	The Lintel seal is mounted to the wall above the track and comes pre-attached to the trailer rail. The seal protects the track, and rollers from the exterior weather elements. In-Jamb mount seal, will be mounted in front of the track hanger brackets.
Curtain	The curtain can slide from right to left or left to right, based on side storage projection. The curtain is hung from rollers that are guided through a track that is attached to the wall.
Storage Cover	The storage cover stores the curtain in the open position when not in use. The curtain is held into the storage cover by 2 sets of straps that are tied together.
Floor Sweep	The floor sweep seals the curtain to the floor and needs to be trimmed in the field. Be sure not to cut the sweep too short, as the wind may cause the curtain to lift off the floor leaving a gap.
Lock Down Mechanism	The Lock Down Mechanism keeps the curtain locked when it is in the closed position. If the hook will not release or lock to the catch mechanism, lower or raise the catch on the jamb until it functions properly. To adjust, loosen the carriage bolt and slide the spring assembly up or down and lock in place.
Nose Seal	The Nose seal, seals the door from the nose of the curtain to the wall. If the jamb wall is uneven, the seal can be adjusted by the hook and loop fastener on the nose seal curtain frame.
"Z" Brackets	If the "Z" brackets are sliding around when the nose seal is locked in place, place a fastener in front or back of the bracket to prevent it from sliding.
Rollers	The rollers are guided through the track and are attached to the curtain through a grommet hole. If the rollers slide off the end of the track, adjust or tighten the End Stop brackets.
Wind Pressure	A Sliding Bugshield should not be operated in high wind conditions as it may be difficult to handle when opening or closing.

MAINTENANCE

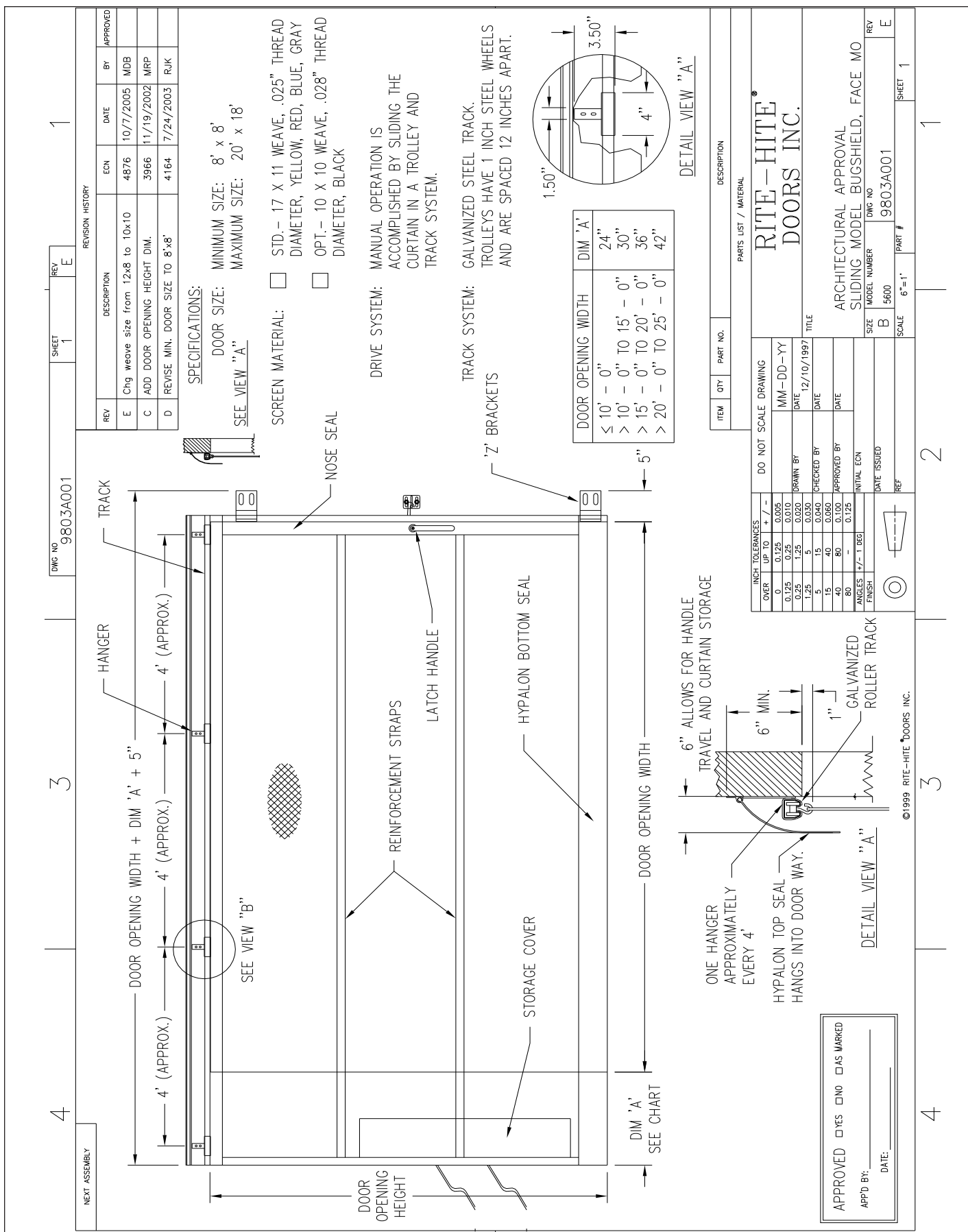
- Lock down mechanism is not operating properly.
See **LOCK DOWN SPRING ADJUSTMENT**.
- Lock down mechanism will not lock or unlock by itself-The catch is mounted to low or high.
Solution: Adjust or re-mount.
- Catch or "Z" brackets are sliding.
Solution: Place a fastener in front of the bracket to prevent it from sliding.
- Nose seal can be adjusted by re-positioning the seal on the touch and hold fastener.

DOOR SERVICE PARTS/LIST



ITEM	QTY	DESCRIPTION	P/N	ITEM	QTY	DESCRIPTION	P/N
1	1	Curtain, Fabricated	2835....	17	1	Spring Latch, Zinc	70700027
2	1	Frame Weldment, Curtain	4604....	18	2	Self Drill/Tap Screw #12-14 x 3/4"	67850004
3	1	Catch Assembly	16500004	19	-		
4	1	Kit, Latch Assembly	53700110	20	1	Latch Hook	52900009
5	1	Seal, Lintel (Not Shown)	6858....	21	1	Latch Handle	51850012
6	2	Kit, End Stop (includes bracket & hrdw)	53700111	22	1/2 dow	Splicer, Track Wall Mount w/setscrews	70600012
7	1	Trailer Rail 45° Alum Side Seal	7223....	23	2	Quick Link	54400003
8	1	Seal, Nose (Right for LH store & Left for RH store)	6859....	24	a/r	Roller and Quick Link Weldment	67200026
9	a/r	"Z" Bracket	14500272	25	2	Link, Latch	54400006
10	a/r	Steel Roller 2 1/2" (1/2 D.O.W.)	67200013	26	2	Ball, Nylon 5/8"	12350002
11	1	Galvanized Track T-880	7343....	27	2	Spacer, Latch	70450051
12	1	Seal, Bottom	6860....	28	1	Shaft, Latch Pivot	68950098
13	a/r	Webbing, Black, 1 1/2" (Must Includ 53700040)	75000013	29	2	Clevis Pin 5/16" x 1 1/4"	64020001
14	a/r	Webbing, Black, 2" (Must Includ 53700040)	75000012	30	1	Flange Bushing	15550028
15	2	Grip, Vinyl Black	55150010	31	a/r	Splicer, Track Ceiling Mount (not shown)	70600010
16	1	Carriage Bolt, 5/16"-18 x 1 1/2"	67870023	32	a/r	Nose Patch Material (order per sq/ft)	45010060
				33	a/r	Fabric Adhesive (1 can)	280-00-008

ARCHITECTURAL DRAWING - FACE MOUNT



11

RITE-HITE DOOR PRODUCT WARRANTY



RITE-HITE Company, LLC and its affiliates (collectively "RITE-HITE") warrants that the BUGSHIELD door sold to the Owner will be free of defects in design, materials and workmanship (ordinary wear and tear excepted) for the periods set forth below ("Limited Warranty").

One (1) Year on all mechanical parts.

One (1) Year labor, based on approved travel and labor repair times.

REMEDIES

Parts. RITE-HITE's obligations under this Limited Warranty is limited to repairing or replacing, at RITE-HITE's option, any part which is determined by RITE-HITE to be defective during the applicable warranty period. Such repair or replacement shall be RITE-HITE's sole obligation and the Owner's exclusive remedy under this Limited Warranty.

Labor. RITE-HITE will provide warranty service without charge for labor in the first year of the warranty period. Thereafter, a charge will apply to any repair or replacement under this Limited Warranty.

CLAIMS. Claims under this Limited Warranty must be made (i) within 30 (thirty) days after discovery and (ii) prior to expiration of the applicable warranty period. Claims shall be made in writing or by contacting the representative from whom the Product was purchased directly. Owner must allow RITE-HITE or its agent, a reasonable opportunity to inspect any Product claimed to be defective and shall, at RITE-HITE's option, either (x) grant RITE-HITE or its agent access to Owner's premises for the purpose of repairing or replacing the Product or (y) return of the Product to the RITE-HITE, f.o.b. RITE-HITE's factory.

NOT WARRANTED. RITE-HITE does not warrant against and is not responsible for wear items such as fuses, batteries, bulbs, vision and seals. No implied warranty shall be deemed to cover, damages that result directly or indirectly from: (i) the unauthorized modification or repair of the Product, (ii) damage due to misuse, neglect, accident, failure to provide necessary maintenance, or normal wear and tear of the Product, (iii) failure to follow RITE-HITE's instructions for installation, failure to operate the Product within the Product's rated capacities and/or specified design parameters, or failure to properly maintain the Product, (iv) use of the Product in a manner that is inconsistent with RITE-HITE's guidelines or local building codes, (v) movement, settling, distortion, or collapse of the ground, or of improvements to which the Products are affixed, (vi) fire, flood, earthquake, elements of nature or acts of God, riots, civil disorder, war, or any other cause beyond the reasonable control of RITE-HITE, (vii) improper handling, storage, abuse, or neglect of the Product by Owner or by any third party.

DISCLAIMERS. THIS LIMITED WARRANTY IS EXCLUSIVE AND IN LIEU OF ALL OTHER REPRESENTATIONS AND WARRANTIES, EXPRESS OR IMPLIED, AND RITE-HITE EXPRESSLY DISCLAIMS AND EXCLUDES ANY IMPLIED WARRANTIES OF MERCHANTABILITY OR FITNESS FOR PURPOSE. RITE-HITE SHALL NOT BE SUBJECT TO ANY OTHER OBLIGATIONS OR LIABILITIES, WHETHER ARISING OUT OF BREACH OF CONTRACT, WARRANTY, TORT (INCLUDING NEGLIGENCE AND STRICT LIABILITY) OR OTHER THEORIES OF LAW, WITH RESPECT TO THE PRODUCTS SOLD OR SERVICES RENDERED BY RITE-HITE, OR ANY UNDERTAKINGS, ACTS, OR OMISSIONS RELATING THERETO.

LIMITATION OF LIABILITY. IN NO EVENT SHALL RITE-HITE BE RESPONSIBLE FOR, OR LIABLE TO ANYONE FOR, SPECIAL, INDIRECT, COLLATERAL, PUNITIVE, INCIDENTAL, OR CONSEQUENTIAL DAMAGES, EVEN IF RITE-HITE HAS BEEN ADVISED OF THE POSSIBILITY OF SUCH DAMAGES. Such excluded damages include, but are not limited to, personal injury, damage to property, loss of goodwill, loss of profits, loss of use, cost of cover with any substitute product, interruption of business, or other similar indirect financial loss. Rite-Hite 2.1.14

RITE-HITE DOORS, INC. is covered by one or more of the following U.S. patents, including patents applied for, pending, or issued:

5,579,820, 5,638,883, 5,794,678, 5,887,385, 5,915,448, 5,944,086, 6,089,305, 6,145,571, 6,148,897, 6,192,960, 6,212,826, 6,321,822, 6,325,195, 6,330,763, 6,360,487, 6,481,487, 6,560,927, 6,598,648, 6,612,357, 6,615,898, 6,688,374, 6,698,490, 6,837,296, 6,901,703, 6,942,000, 6,964,289, 7,034,682, 7,045,764, 7,111,661, 7,114,753, 7,151,450, 7,578,097, 7,699,089, 7,748,431, 7,757,437, 8,037,921, 8,167,020, 8,113,265.

RITE-HITE®, RITE-HITE® DOORS, FASTRAX®, FASTRAX® FR, FASTRAX® FRLD, FASTRAX® CL, LITESPEED™, SPLITSECOND™, TRAKLINE™, BUG-SHIELD™, ISO-TEK®, BARRIER® GLIDER, DOK-DOR™ are trademarks of RITE-HITE®.

RITE-HITE
8900 N. Arbon Drive
P.O. Box 245020
Milwaukee, Wisconsin 53224-9520
Sales: 414-355-2600
Toll Free: 800-456-0600
Aftermarket: 414-362-3714
Service: 563-589-2722
Service Fax: 563-589-2737
Representatives in All Major Cities
www.ritehite.com