

4

3

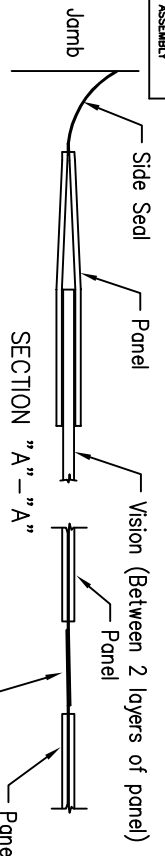
DWG NO. 2205A002

SHEET

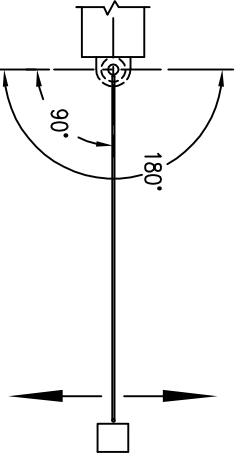
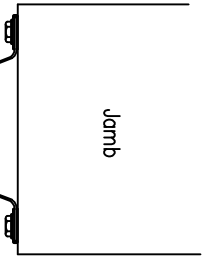
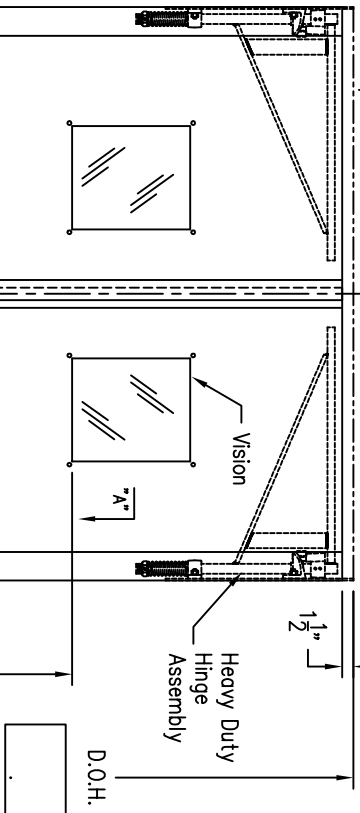
REV A

1

NEXT ASSEMBLY



DOUBLE DOOR



SPECIFICATIONS:

- USAGE GUIDELINES: FOR HIGH AND/OR WIDE LOADS.
- DOOR SIZE: MINIMUM SIZE: 4' WIDE x 6'-6" HIGH (PAIRS)  
MAXIMUM SIZE: 10' WIDE x 10' HIGH (PAIRS)
- DOOR MATERIAL: TU-PLY (9/64") DOUBLE LAYER  
COLOR: BLACK
- VISION: 14" x 16" POLYCARBONATE - GLUED AND RIVETED IN PLACE
- HINGE OPTIONS:  HEAVY DUTY STEEL, W/ ADJUSTABLE SPRING TENSION,  
TOP MOUNTED, SELF CLOSING  
 HEAVY DUTY STAINLESS STEEL, W/ ADJUSTABLE SPRING  
TENSION, TOP MOUNTED, SELF CLOSING  
 180° HINGING (90° EITHER DIRECTION)

ITEM	QTY	PART NO.	DESCRIPTION
PARTS LIST / MATERIAL			

**RITTE-HITE**  
DOORS INC.

ARCHITECTURAL APPROVAL  
MODEL 2600 TU-PLY

INCH TOLERANCES		DO NOT SCALE DRAWING	
OVER	UP TO	+ / -	
0	0.125	0.005	MM-DD-YY
0.125	1.25	0.010	DATE
1.25	5	0.020	DRAWN BY JMC
5	15	0.030	DATE 5/9/2005
15	40	0.040	CHECKED BY
40	80	0.060	DATE
80	-	0.100	APPROVED BY
INITIAL EGN	DATE		
FINISH	7/-1 D69	0.125	DATE ISSUED 5/9/2005

4

3

2

1

A

B

B

A

PLAN VIEW-DOUBLE ACTING DOORS

©2005 RITTE-HITE DOORS INC.