

4

3

2

1

REVISION HISTORY				
REV.	DATE	DESCRIPTION	ECN	BY
-	9/10/2009	PRODUCTION RELEASE	5868	RPB
A	11/10/2009	ADD CONTROL CABLE DIMENSIONS	5962	RPB

Consult Product Sell/Specification Sheet and Order Form for additional product specifications and all available options.

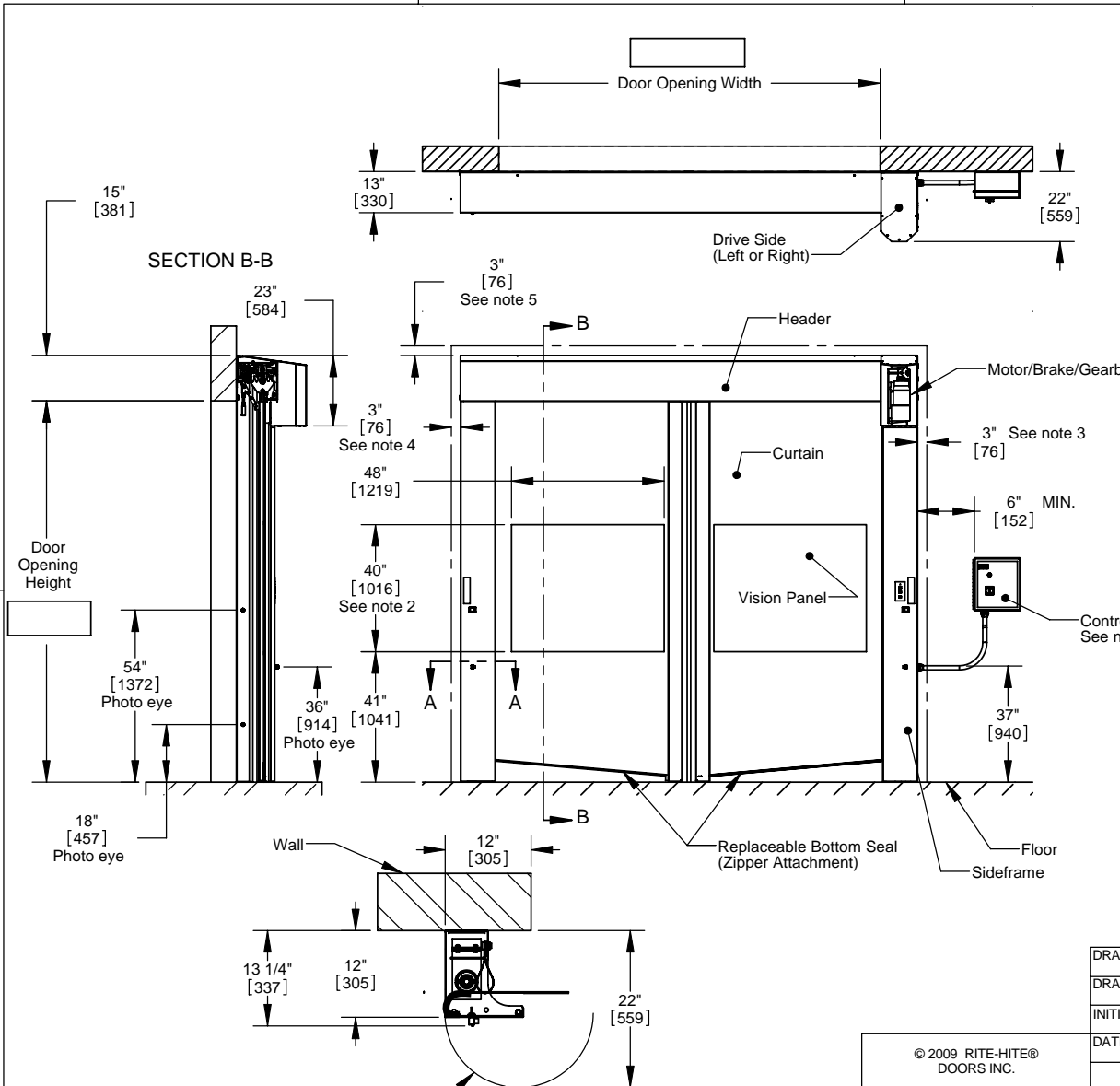
Notes:

1. Alternate dimensions in brackets are in millimeters.
2. Vision height is 32" [813] for doors less than 8' [2438].
3. Motor shroud requires min. 3" [76] of side clearance for access.
4. Recommended sideframe installation clearance is 3" [76].
5. Header shroud requires min. 3" [76] of top clearance for access.
6. Fiberglass Control Box (std.) 14" [356] x 16" [406] x 8" [203], Stainless Control Box (opt.) 16" [406] x 19" [482] x 8" [203]

APPROVED YES NO

Approved By: _____

Date: _____



B

B

A

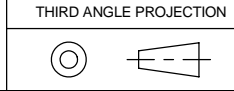
A

DRAWN BY	RPB
DRAWN DATE	03/14/2009
INITIAL ECN	5868
DATE ISSUED	09/10/2009

RITE-HITE® DOORS INC.

TITLE
ARCHITECTURAL APPROVAL
SPLITSECOND PHARMA

© 2009 RITE-HITE® DOORS INC.



REFERENCE
ALL SHEETS ARE THE SAME REVISION STATUS
DO NOT SCALE DRAWING

SIZE	MODEL	DWG NO	REV
B	SplitSecondPH	7824A001	A
SCALE	PART#	SHEET	
1:36	SPLTPH.XXXX	1 OF 1	

4

3

2

1

SECTION A-A
SCALE 1 : 16

Travel arc for sideframe lid