

4

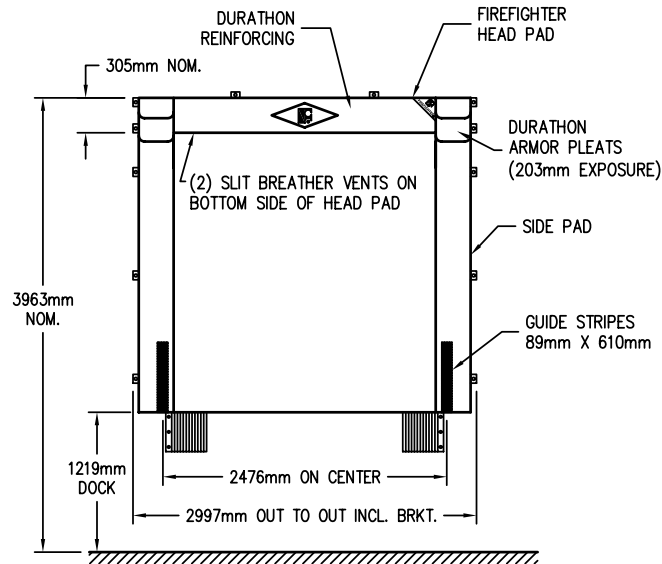
3

2

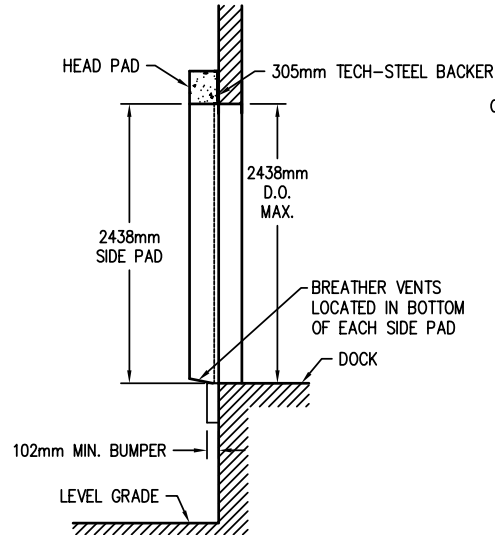
1

NEXT ASSEMBLY

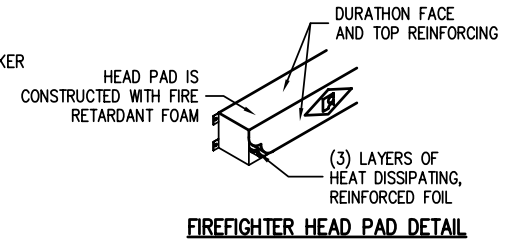
REVISION HISTORY					
REV	DESCRIPTION	ECH	DATE	BY	APPROVED
A	ADDED NOTE ABOUT RAISED BUMPERS	08-009	3/28/08	GDB	
B	ADDED "FOR REFERENCE ONLY" NOTE	11-010	3/29/2011	GDB	



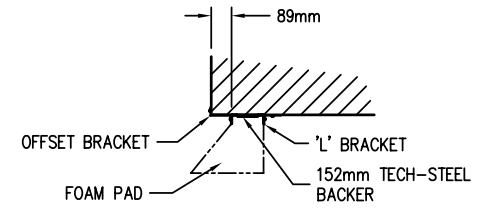
ELEVATION



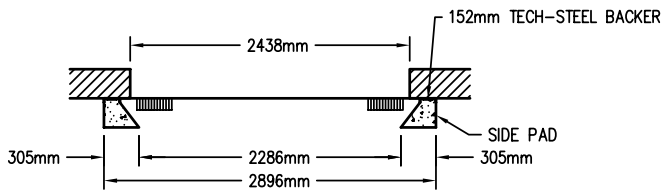
SECTION THRU ELEVATION



FIREFIGHTER HEAD PAD DETAIL



SIDE PAD MOUNTING



SECTION THRU PLAN

BASE FABRIC: 22 PLUS, BLACK
 AP'S AND H.P REINFORCING: DURATHON
 RECOMMENDED TRUCK COVERAGE: 3734mm - 4039mm

NOTE:
 APPLICATIONS THAT HAVE BUMPERS MOUNTED ABOVE DOCK HEIGHT (OR ABOVE THE PIT FLOOR IN VERTICAL LEVELER APPLICATIONS) MAY REQUIRE THAT THE BOTTOM OF THE SIDE MEMBERS BE MOUNTED AT THE TOP OF THE BUMPERS INSTEAD OF AT DOCK HEIGHT.

THIS DRAWING IS FOR REFERENCE ONLY. DO NOT USE FOR PRODUCTION PURPOSES.

©2002 FROMMELT PRODUCTS CORP.

INCH TOLERANCES			DO NOT SCALE DRAWING	
OVER	UP TO	+ / -	MM-DD-YY	DATE
0	0.125	0.005	MM-DD-YY	8/24/2007
0.125	0.25	0.010	DRAWN BY	GDB
0.25	1.25	0.020	CHECKED BY	DATE
1.25	5	0.030	APPROVED BY	DATE
5	15	0.040	INITIAL ECH	
15	40	0.050	DATE ISSUED	
40	80	0.100	REF	
80	-	0.125		

ITEM	QTY	PART NO.	DESCRIPTION
PARTS LIST / MATERIAL			

FROMMELT[®] PRODUCTS CORP.		
TITLE TPP ARCHITECTURAL APPROVAL (METRIC) STANDARD UNIT		
SIZE C	MODEL NUMBER TPP	DWG NO A7120100
SCALE 3/8"=1'		SHEET 1 of 1

4

3

2

1

DWG NO A7120100 SHEET 1 of 1 REV B