

4

3

DWG NO 8804A045

SHEET

REV

1

NEXT ASSEMBLY

REVISION HISTORY

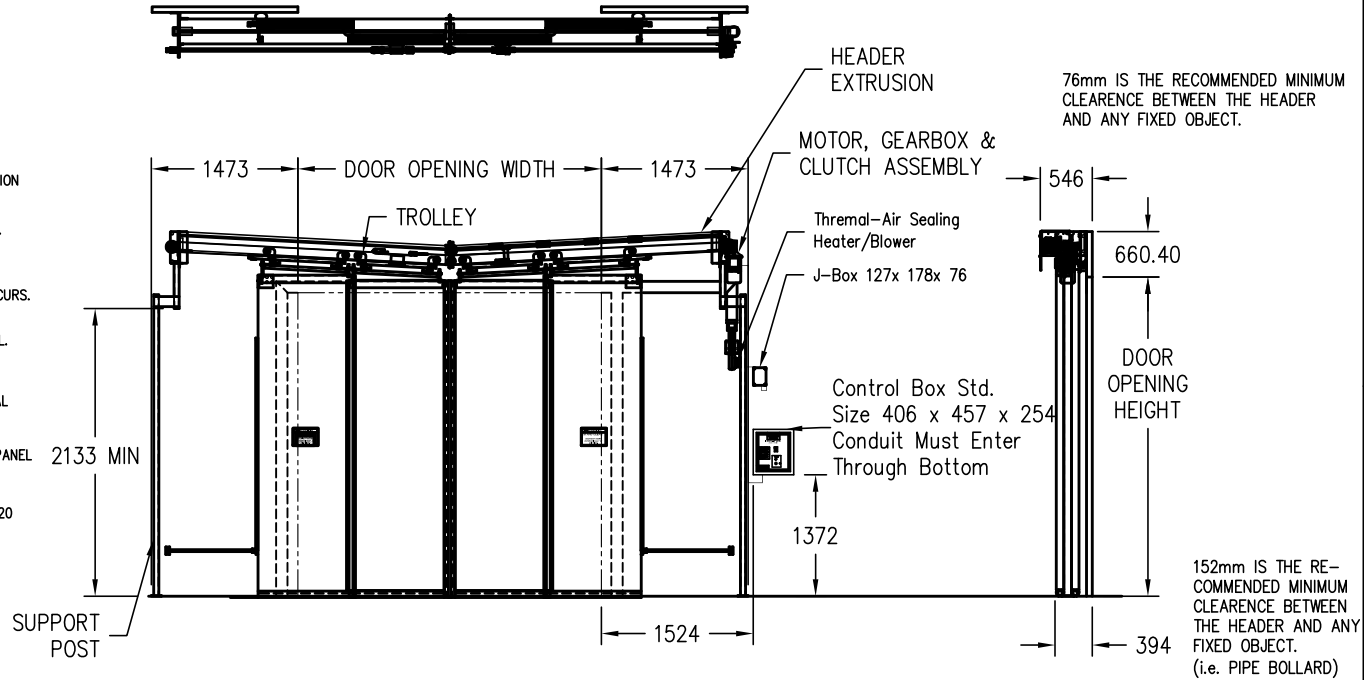
REV	DESCRIPTION	ECN	DATE	BY	APPROVED
		-			

B

B

SPECIFICATIONS:

- DOOR SIZE:** MINIMUM SIZE: 1828.80 WIDE x 2438.40 HIGH
MAXIMUM SIZE: 3657.60 WIDE x 5486.40 HIGH
- PANEL DESIGN:**
 - STD. LEAD - .85kg. POLYURETHANE: GRAY w/o VISION
 - STD. FOLLOWER - .85kg. POLYURETHANE: GRAY w/o VISION
 - OPT. - VISION 406.40 x 863.60 NON-REMOVABLE
- SAFETY FEATURES:** FLEXIBLE PANEL, OBSTRUCTION SENSOR REVERSING SYSTEM. UPON INCIDENTAL CONTACT PANELS ARE ABLE TO SWING BUT ARE ALSO RETAINED BY PANEL RETENTION STRAPS. PANEL RETENTION STRAPS PAY OUT UPON FULL IMPACT. PANELS CAN BE OPENED MANUALLY IF POWER OUTAGE OCCURS. OPTIONAL VISION AND ACCENT PANELS AVAILABLE.
- FOLLOWER PANEL:** EACH FOLLOWER PANEL IS ATTACHED TO EACH LEAD PANEL.
- PANEL SEALING:** EACH HALF OF THE HEADER IS SLOPED 3° SO SEALS ARE ENGAGED ONLY WHEN THE DOOR IS CLOSED, REDUCING SEAL WEAR.
- HEADER EXTRUSION:** HEADER IS CONSTRUCTED OF A 4.8 ALUMINUM EXTRUSION WITH TWO INTEGRAL TROLLEY PATHS. ONE FOR THE LEAD PANEL AND ONE FOR THE FOLLOWER PANEL. TWO TROLLEYS ARE ATTACHED TO EACH PANEL WITH A TOTAL OF 8 TROLLEYS
- SUPPORT BEAMS:** SUPPORT BEAMS ARE CONSTRUCTED OF 50.8 x 76.20 x 3.20 ALUMINUM TUBING.
- DRIVE SYSTEM:** 3 PHASE MOTOR CONTROLLED BY AN A.C. INVERTER. DOOR COMMANDS ARE PROCESSED BY A RITE-HITE PROGRAMMABLE LOGIC CONTROLLER. THE PANELS ARE DRIVEN BY A GEARBOX CLUTCH BELT DRIVE SYSTEM.
- CONTROL BOX:** STANDARD CONTROLS INCLUDE AN "OPEN/RESET" BUTTON & POWER DISCONNECT. THE BOX IS NEMA 4X AND FUSE PROTECTED. THE BOX IS PREWIRED WITH EXTERNAL CONNECTIONS BROUGHT INTO PRE-CODED TERMINALS.
 - 380 VAC, 3 PHASE, 50/60 HZ
 - 415 VAC, 3 PHASE, 50/60 HZ
 - 575 VAC, 3 PHASE, 60 HZ (CANADA ONLY)
- THERMAL-AIR SEALING SYSTEM: (HEATER/BLOWER)**
 - STD. - 230 VAC, 1 PHASE, 50HZ



A

A

NOTE: ALL DIMENSIONS ARE IN MILLIMETERS UNLESS NOTED.

*SEE DRAWING 8804M773 FOR REQUIRED FAN CLEARANCE

ITEM	QTY	PART NO.	DESCRIPTION
PARTS LIST / MATERIAL			
RITE-HITE[®] DOORS INC.			
TITLE ARCHITECTURAL APPROVAL COLD STORAGE DOOR (4 PNL-AIR SEAL)(EURO)			
SIZE	MODEL NUMBER	DWG NO	REV
B	8600	8804A045	
SCALE	1/4"=1'	PART #	SHEET

INCH TOLERANCES			DO NOT SCALE DRAWING	
OVER	UP TO	+ / -	MM-DD-YY	DATE
0	0.125	0.005	DRAWN BY	4/29/2005
0.125	0.25	0.010	CHECKED BY	
0.25	1.25	0.020	APPROVED BY	
1.25	5	0.030	DATE	
5	15	0.040	INITIAL ECN	
15	40	0.060	DATE ISSUED	
40	80	0.100	REF	
80	-	0.125		
ANGLES	±/- 1 DEG			
FINISH				

APPROVED YES NO AS MARKED

APP'D BY: _____

DATE: _____

PROPERTY OF RITE-HITE ENGINEERING DEPT.
PROVIDED FOR INFORMATIONAL PURPOSES ONLY
SUBJECT TO CHANGE WITHOUT NOTIFICATION

4

3

2

1