

4

3

DWG NO
7826E005

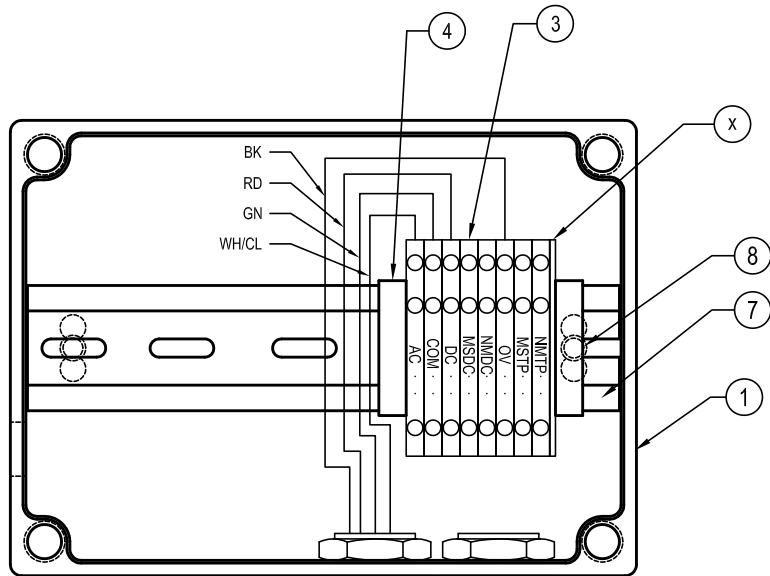
SHEET

REV

1

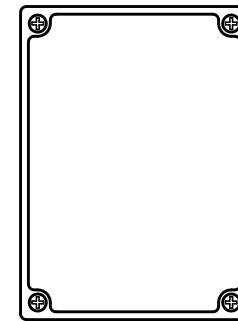
NEXT ASSEMBLY	FINAL ASSEMBLY
7826E006	FINAL

REVISION HISTORY					
REV	DESCRIPTION	ECN	DATE	BY	APPROVED



WIRE CABLE AS FOLLOWS:
 BK - 0V
 WH/CL - AC
 RD - DC
 GN - COM

(2) Control Box Cable Length Plus 10'



COVER SHOWN
1/2 SCALE

ITEM	QTY	PART NO.	DWG. NO.	DESCRIPTION
9	1	15550002	-	BSHG,CA SEAL,4X6MM,21MM
8	2	67850015	-	SCR,PHLP,DR/TP,#8X1/2
7	1	38120006	-	DIN RAIL,LOW-PROFILE,6-1/2
6	1	15550045	-	BSHG,CA SEAL,3X7MM,21MM
5	2	16960015	-	FTG,STRT,L/T,21MM
4	2	73100024	-	TERMINAL,END STOP,SCREWLESS
3	8	73100085	-	TERMINAL,WA,CAGE,20A,3HOLE
2	A/R	15650046	-	CABLE,VIRTUAL VISION
1	1	43750124	-	ENCL,LEXAN,7X5X4

PARTS LIST / MATERIAL

INCH TOLERANCES			DO NOT SCALE DRAWING	
OVER	UP TO	+ / -	DRAWN BY	DATE
0	0.125	0.005	MDB	7/6/2009
0.125	0.25	0.010		
0.25	1.25	0.020	CHECKED BY	DATE
1.25	5	0.030	APPROVED BY	DATE
5	15	0.040	INITIAL ECN	
15	40	0.060	DATE ISSUED	7/6/2009
40	80	0.100	REF	
80	-	0.125		
ANGLES			FINISH	
+/-1 DEG				

RITE-HITE[®]
DOORS INC.

TITLE
JBOX,ASY, VIRTUAL VISION

SIZE B	MODEL NUMBER FasTraxCL	DWG NO 7826E005	REV
SCALE 9"=1'	PART # 5352....	SHEET	

4

3

2

1

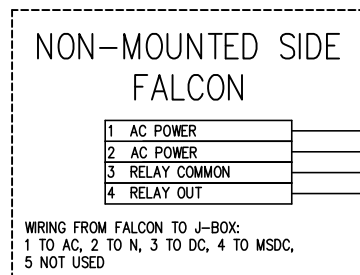
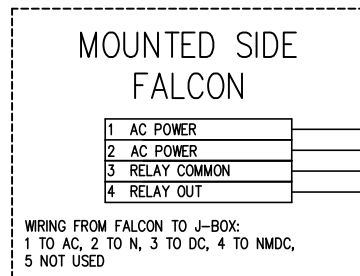
B

B

A

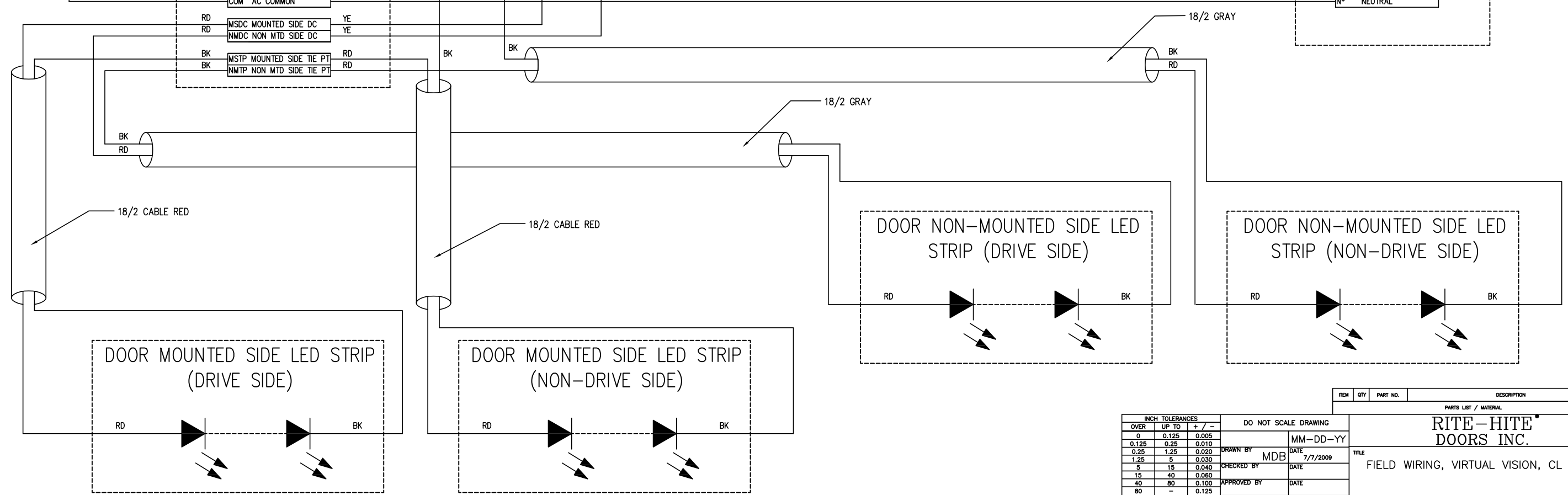
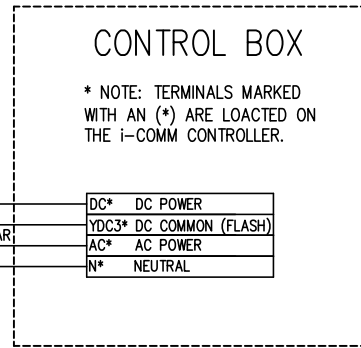
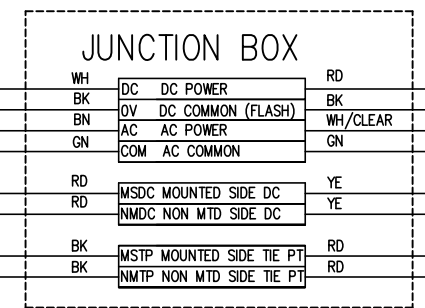
A

REVISION HISTORY					
REV	DESCRIPTION	ECN	DATE	BY	APPROVED



NOTES:

- 1.) LED STRIPS ARE 12V DC AND MUST BE WIRED IN SERIES AS SHOWN.
- 2.) MOUNTED SIDE REFERS TO THE SIDE OF THE DOOR OPENING THAT THE FASTRAX IS ATTACHED TO THE WALL
- 3.) RED CABLES ARE FOR THE MOUNTED SIDE WITH THE LONGER CABLE SUPPLIED TO THE NON-DRIVE SIDE. GRAY CABLES ARE FOR THE NON-MOUNTED SIDE OF THE DOORWAY.
- 4.) ALL CABLES TERMINATE INTO THE 5" X 7" JUNCTION BOX PROVIDED.
- 5.) i-COMM OUTPUT YDC3 MUST BE PROGRAMED TO A FUNCTION OF 21 (FLASH).
- 6.) FALCONS SHOULD BE PROGRAMMED FOR A 2-SECOND HOLD TIME AND BI-DIRECTIONAL DETECTION



INCH TOLERANCES		
OVER	UP TO	+ / -
0	0.125	0.005
0.125	0.25	0.010
0.25	1.25	0.020
1.25	5	0.030
5	15	0.040
15	40	0.080
40	80	0.100
80	-	0.125

DO NOT SCALE DRAWING	
MM-DD-YY	DATE
MDB	7/7/2009
CHECKED BY	DATE
APPROVED BY	DATE
INITIAL ECN	
DATE ISSUED	7/7/2009
REF	

ITEM	QTY	PART NO.	DESCRIPTION
PARTS LIST / MATERIAL			
RITE-HITE DOORS INC.			
TITLE			FIELD WIRING, VIRTUAL VISION, CL
SIZE	MODEL NUMBER	DWG NO	REV
D	FastTraxCL	7826E006	
SCALE	9"=1'	PART # 7624....	SHEET